

Product datasheet for **UM800176CF**

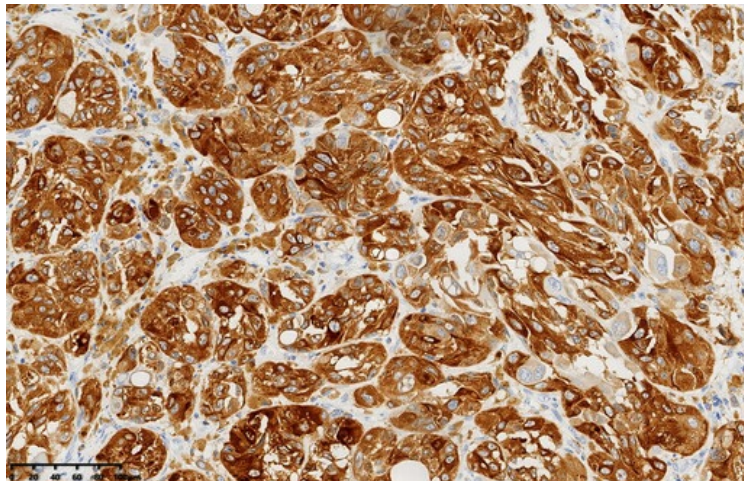
MelanA (MLANA) Mouse Monoclonal Antibody [Clone ID: UMAB286]

Product data:

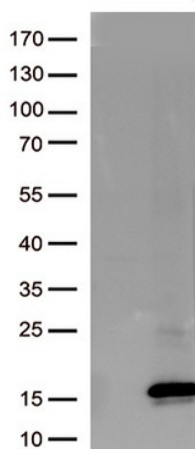
Product Type:	Primary Antibodies
Clone Name:	UMAB286
Applications:	IHC, WB
Recommended Dilution:	WB 1:1000, IHC 1:1600
Host:	Mouse
Isotype:	IgG1
Clonality:	Monoclonal
Immunogen:	Human recombinant protein fragment corresponding to amino acids 48-118 of human MLANA (NP_005502) produced in E.coli.
Formulation:	Lyophilized powder (original buffer 1X PBS, pH 7.3, 8% trehalose)
Reconstitution Method:	For reconstitution, we recommend adding 100uL distilled water to a final antibody concentration of about 1 mg/mL. To use this carrier-free antibody for conjugation experiment, we strongly recommend performing another round of desalting process. (OriGene recommends Zeba Spin Desalting Columns, 7KMWCO from Thermo Scientific)
Purification:	Purified from mouse ascites fluids or tissue culture supernatant by affinity chromatography (protein A/G)
Conjugation:	Unconjugated
Predicted Protein Size:	13.2 kDa
Gene Name:	melan-A
Database Link:	NP_005502 Entrez Gene 2315 Human Q16655
Synonyms:	MART-1; MART1
Protein Families:	Transmembrane



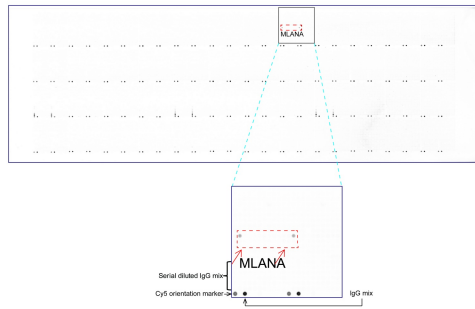
[View online »](#)

Product images:

Immunohistochemical staining of paraffin-embedded Human melanoma tissue using anti-Melan A (MLANA) mouse monoclonal antibody. (Heat-induced epitope retrieval by 1mM EDTA in 10mM Tris buffer (pH8.0) at 120 oC for 3 min, [UM800176]) (1:1600)



HEK293T cells were transfected with the pCMV6-ENTRY control (Left lane) or pCMV6-ENTRY Melan A (MLANA) (Cat# [RC204190], Right lane) cDNA for 48 hrs and lysed. Equivalent amounts of cell lysates (5 ug per lane) were separated by SDS-PAGE and immunoblotted with anti-Melan A (MLANA). (1:1000)



OriGene overexpression protein microarray chip was immunostained with UltraMAB anti-Melan A (MLANA) mouse monoclonal antibody ([UM800176]). The positive reactive proteins are highlighted with two red arrows in the enlarged subarray. All the positive controls spotted in this subarray are also labeled for clarification. (1:100)