

Product datasheet for **UM800176**

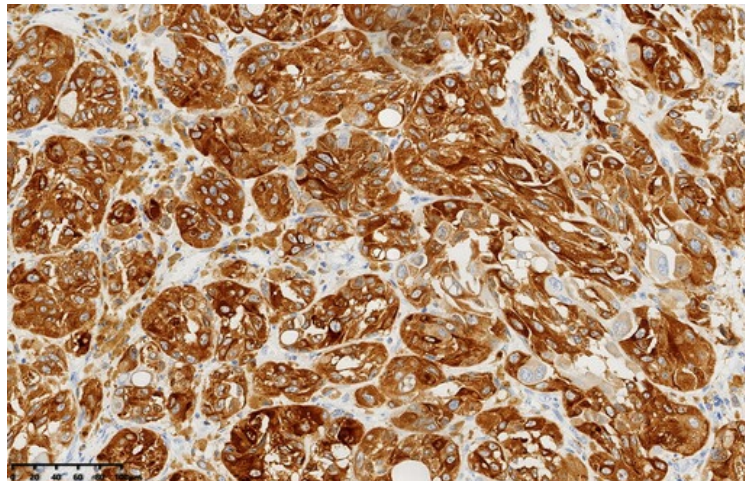
MelanA (MLANA) Mouse Monoclonal Antibody [Clone ID: UMAB286]

Product data:

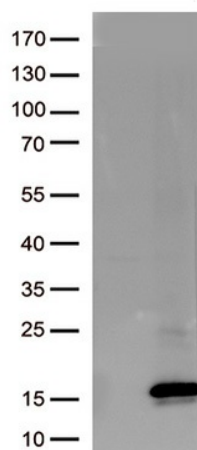
Product Type:	Primary Antibodies
Clone Name:	UMAB286
Applications:	IHC, WB
Recommended Dilution:	WB 1:1000, IHC 1:1600
Host:	Mouse
Isotype:	IgG1
Clonality:	Monoclonal
Immunogen:	Human recombinant protein fragment corresponding to amino acids 48-118 of human MLANA (NP_005502) produced in E.coli.
Formulation:	PBS (pH 7.3) containing 1% BSA, 50% glycerol and 0.02% sodium azide.
Concentration:	1 mg/ml
Purification:	Purified from mouse ascites fluids or tissue culture supernatant by affinity chromatography (protein A/G)
Conjugation:	Unconjugated
Predicted Protein Size:	13.2 kDa
Gene Name:	melan-A
Database Link:	NP_005502 Entrez Gene 2315 Human Q16655
Synonyms:	MART-1; MART1
Protein Families:	Transmembrane



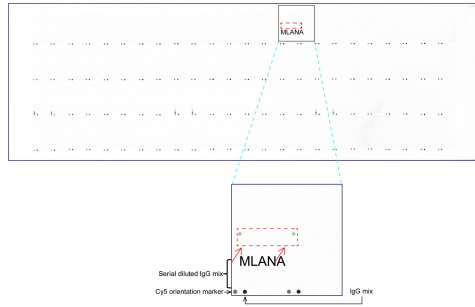
[View online »](#)

Product images:

Immunohistochemical staining of paraffin-embedded Human melanoma tissue using anti-Melan A (MLANA) mouse monoclonal antibody. (Heat-induced epitope retrieval by 1mM EDTA in 10mM Tris buffer (pH8.0) at 120 oC for 3 min, UM800176) (1:1600)



HEK293T cells were transfected with the pCMV6-ENTRY control (Left lane) or pCMV6-ENTRY Melan A (MLANA) (Cat# [RC204190], Right lane) cDNA for 48 hrs and lysed. Equivalent amounts of cell lysates (5 ug per lane) were separated by SDS-PAGE and immunoblotted with anti-Melan A (MLANA). (1:1000)



OriGene overexpression protein microarray chip was immunostained with UltraMAB anti-Melan A (MLANA) mouse monoclonal antibody (UM800176). The positive reactive proteins are highlighted with two red arrows in the enlarged subarray. All the positive controls spotted in this subarray are also labeled for clarification. (1:100)