

## Product datasheet for **UM800170**

### **MUM1 (IRF4) Mouse Monoclonal Antibody [Clone ID: UMAB280]**

#### **Product data:**

Product Type:	Primary Antibodies
Clone Name:	UMAB280
Applications:	IHC
Recommended Dilution:	IHC 1:250
Reactivity:	Human
Host:	Mouse
Isotype:	IgG2a
Clonality:	Monoclonal
Immunogen:	Full length human recombinant protein of human IRF4 (NP_002451) produced in HEK293T cell.
Formulation:	PBS (pH 7.3) containing 1% BSA, 50% glycerol and 0.02% sodium azide.
Concentration:	1.00mg/ml
Purification:	Purified from mouse ascites fluids or tissue culture supernatant by affinity chromatography (protein A/G)
Conjugation:	Unconjugated
Predicted Protein Size:	51.8 kDa
Gene Name:	interferon regulatory factor 4
Database Link:	<a href="#">NP_002451</a> <a href="#">Entrez Gene 3662 Human</a> <a href="#">Q15306</a>



[View online »](#)

**Background:**

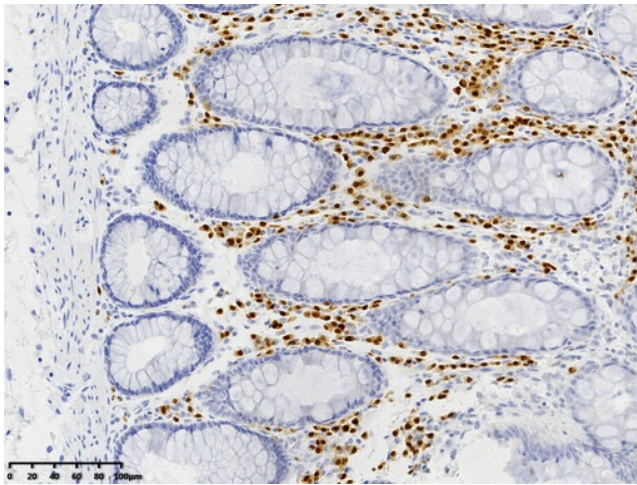
The protein encoded by this gene belongs to the IRF (interferon regulatory factor) family of transcription factors, characterized by a unique tryptophan pentad repeat DNA-binding domain. The IRFs are important in the regulation of interferons in response to infection by virus, and in the regulation of interferon-inducible genes. This family member is lymphocyte specific and negatively regulates Toll-like-receptor (TLR) signaling that is central to the activation of innate and adaptive immune systems. A chromosomal translocation involving this gene and the IgH locus, t(6;14)(p25;q32), may be a cause of multiple myeloma. Alternatively spliced transcript variants have been found for this gene. [provided by RefSeq, Aug 2010].

**Synonyms:**

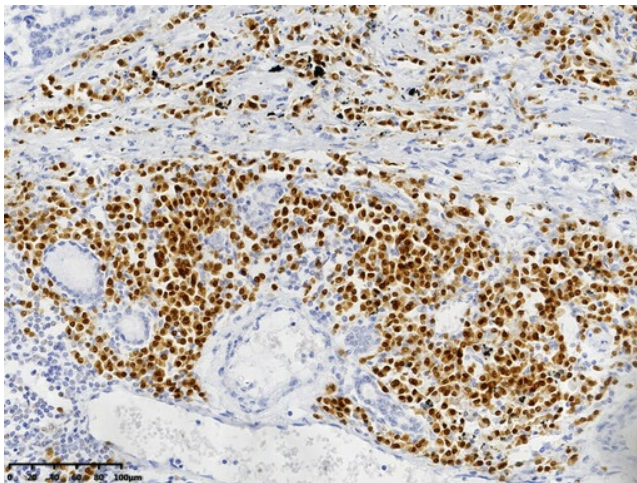
LSIRF; MUM1; NF-EM5; SHEP8

**Protein Families:**

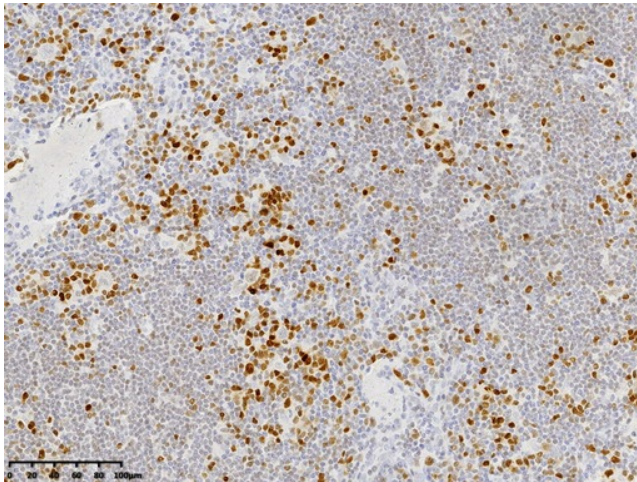
Druggable Genome, Transcription Factors

**Product images:**

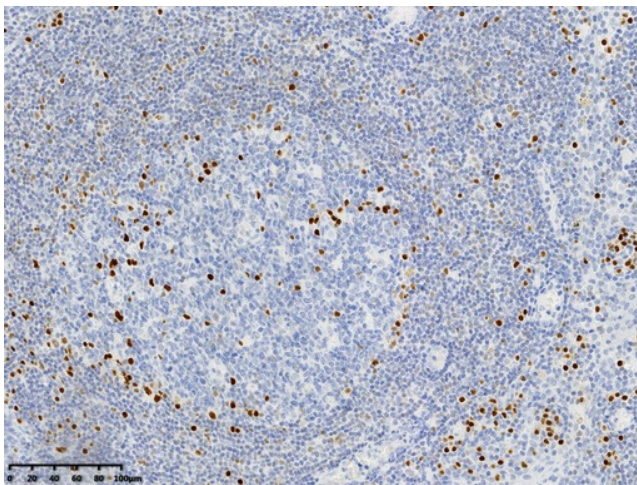
IHC staining of FFPE human colon tissue with in the normal limits using anti-MUM1(IRF4) mouse monoclonal antibody (UM800170) and Polink-2 HRP polymer detection kit ([D22-110]). Heat-induced epitope retrieval by EDTA solution buffer pH 9.0 ([B06C-50]) at 120°C for 3 min. The brown stain indicates positive stain, blue is the counter stain.



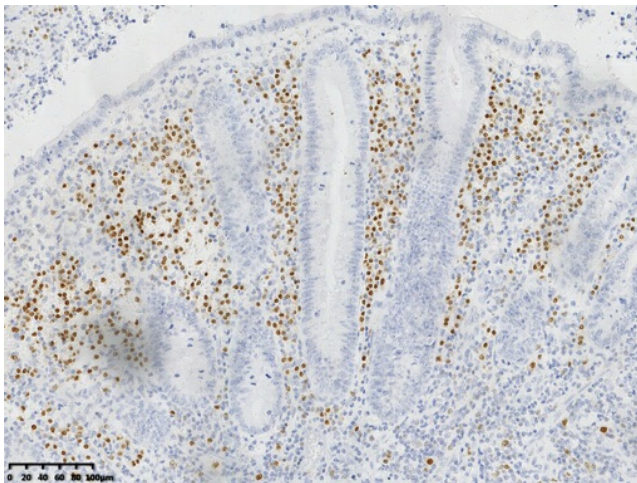
IHC staining of FFPE human lung cancer tissue using anti-MUM1(IRF4) mouse monoclonal antibody (UM800170) and Polink-2 HRP polymer detection kit ([D22-110]). Heat-induced epitope retrieval by EDTA solution buffer pH 9.0 ([B06C-50]) at 120°C for 3 min. The brown stain indicates positive stain, blue is the counter stain.



IHC staining of FFPE human lymphoma tissue using anti-MUM1(IRF4) mouse monoclonal antibody (UM800170) and Polink-2 HRP polymer detection kit ([D22-110]). Heat-induced epitope retrieval by EDTA solution buffer pH 9.0 ([B06C-50]) at 120°C for 3 min. The brown stain indicates positive stain, blue is the counter stain.



IHC staining of FFPE human tonsil tissue with in the normal limits using anti-MUM1(IRF4) mouse monoclonal antibody (UM800170) and Polink-2 HRP polymer detection kit ([D22-110]). Heat-induced epitope retrieval by EDTA solution buffer pH 9.0 ([B06C-50]) at 120°C for 3 min. The brown stain indicates positive stain, blue is the counter stain.



IHC staining of FFPE human appendix tissue with in the normal limits using anti-MUM1(IRF4) mouse monoclonal antibody (UM800170) and Polink-2 HRP polymer detection kit ([D22-110]). Heat-induced epitope retrieval by EDTA solution buffer pH 9.0 ([B06C-50]) at 120°C for 3 min. The brown stain indicates positive stain, blue is the counter stain.