

Product datasheet for **UM800154CF**

EZH2 Mouse Monoclonal Antibody [Clone ID: UMAB264]

Product data:

Product Type:	Primary Antibodies
Clone Name:	UMAB264
Applications:	IHC
Recommended Dilution:	IHC 1:100
Reactivity:	Human, Mouse, Rat
Host:	Mouse
Isotype:	IgG1
Clonality:	Monoclonal
Immunogen:	Human recombinant protein fragment corresponding to amino acids 182-431 of human EZH2 (NP_004447) produced in E.coli.
Formulation:	Lyophilized powder (original buffer 1X PBS, pH 7.3, 8% trehalose)
Reconstitution Method:	For reconstitution, we recommend adding 100uL distilled water to a final antibody concentration of about 1 mg/mL. To use this carrier-free antibody for conjugation experiment, we strongly recommend performing another round of desalting process. (OriGene recommends Zeba Spin Desalting Columns, 7KMWCO from Thermo Scientific)
Purification:	Purified from mouse ascites fluids or tissue culture supernatant by affinity chromatography (protein A/G)
Conjugation:	Unconjugated
Storage:	Store at -20°C as received.
Stability:	Stable for 12 months from date of receipt.
Predicted Protein Size:	85.8 kDa
Gene Name:	enhancer of zeste 2 polycomb repressive complex 2 subunit
Database Link:	NP_004447 Entrez Gene 14056 Mouse Entrez Gene 312299 Rat Entrez Gene 2146 Human Q15910



[View online »](#)

Background:

This gene encodes a member of the Polycomb-group (PcG) family. PcG family members form multimeric protein complexes, which are involved in maintaining the transcriptional repressive state of genes over successive cell generations. This protein associates with the embryonic ectoderm development protein, the VAV1 oncoprotein, and the X-linked nuclear protein. This protein may play a role in the hematopoietic and central nervous systems. Multiple alternatively spliced transcript variants encoding distinct isoforms have been identified for this gene. [provided by RefSeq, Feb 2011]

Synonyms:

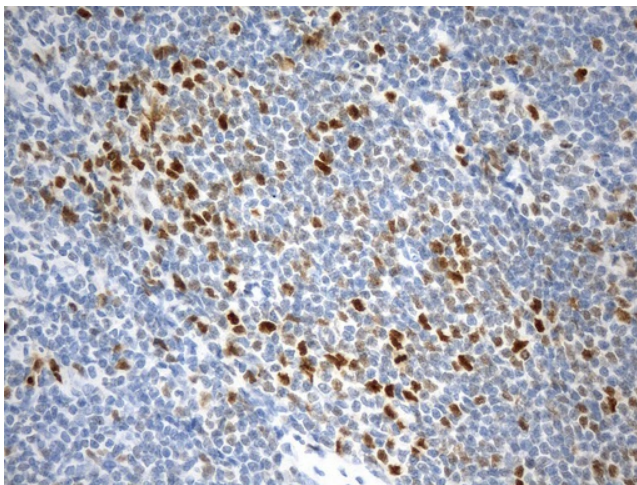
ENX-1; ENX1; EZH2b; KMT6; KMT6A; WVS; WVS2

Protein Families:

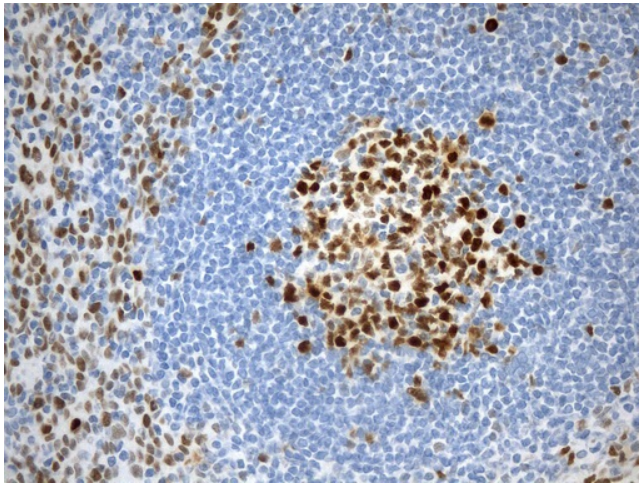
Druggable Genome, Transcription Factors

Product images:

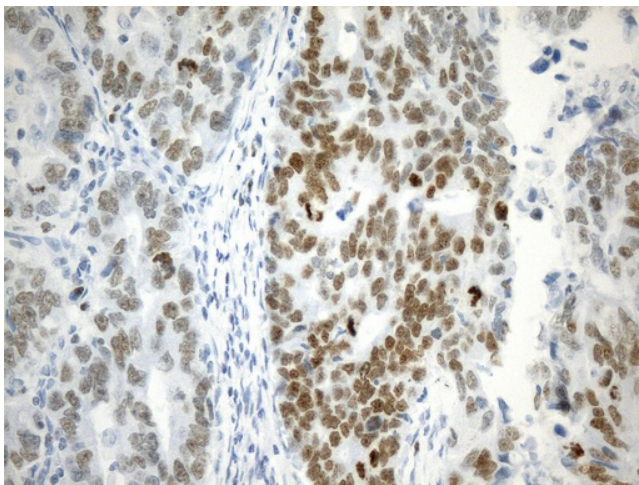
Immunohistochemical staining of paraffin-embedded Human breast tissue within the normal limits using anti-EZH2 mouse monoclonal antibody. (Heat-induced epitope retrieval by 1mM EDTA in 10mM Tris buffer (pH9.0) at 120°C for 2.5 min, [UM800154]) (1:100)



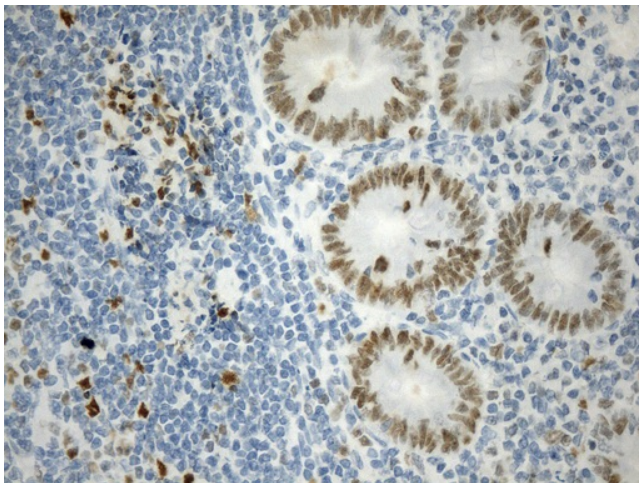
Immunohistochemical staining of paraffin-embedded Human lymphoma tissue using anti-EZH2 mouse monoclonal antibody. (Heat-induced epitope retrieval by 1mM EDTA in 10mM Tris buffer (pH9.0) at 120°C for 2.5 min, [UM800154]) (1:100)



Immunohistochemical staining of paraffin-embedded Human tonsil within the normal limits using anti-EZH2 mouse monoclonal antibody. (Heat-induced epitope retrieval by 1mM EDTA in 10mM Tris buffer (pH9.0) at 120°C for 2.5 min, [UM800154]) (1:100)



Immunohistochemical staining of paraffin-embedded Human Gastric Carcinoma using anti-EZH2 mouse monoclonal antibody. (Heat-induced epitope retrieval by 1mM EDTA in 10mM Tris buffer (pH9.0) at 120°C for 2.5 min, [UM800154]) (1:100)



Immunohistochemical staining of paraffin-embedded Human appendix tissue within the normal limits using anti-EZH2 mouse monoclonal antibody. (Heat-induced epitope retrieval by 1mM EDTA in 10mM Tris buffer (pH9.0) at 120°C for 2.5 min, [UM800154]) (1:100)