

Product datasheet for **UM800153**

CD38 Mouse Monoclonal Antibody [Clone ID: UMAB263]

Product data:

Product Type:	Primary Antibodies
Clone Name:	UMAB263
Applications:	IHC, WB
Recommended Dilution:	IHC 1:300
Reactivity:	Human
Host:	Mouse
Isotype:	IgG1
Clonality:	Monoclonal
Immunogen:	Human recombinant protein fragment corresponding to amino acids 43-300 of human CD38 (NP_001766) produced in E.coli.
Formulation:	PBS (PH 7.3) containing 1% BSA, 50% glycerol and 0.02% sodium azide.
Concentration:	0.5~1.0 mg/ml (Lot Dependent)
Purification:	Purified from mouse ascites fluids or tissue culture supernatant by affinity chromatography (protein A/G)
Conjugation:	Unconjugated
Storage:	Store at -20°C as received.
Stability:	Stable for 12 months from date of receipt.
Predicted Protein Size:	34.1 kDa
Gene Name:	Homo sapiens CD38 molecule (CD38), transcript variant 1, mRNA.
Database Link:	NP_001766 Entrez Gene 952 Human P28907
Background:	Synthesizes the second messengers cyclic ADP-ribose and nicotinate-adenine dinucleotide phosphate, the former a second messenger for glucose-induced insulin secretion. Also has cADPr hydrolase activity. Also moonlights as a receptor in cells of the immune system. [UniProtKB/Swiss-Prot Function]
Synonyms:	ADPRC 1; ADPRC1

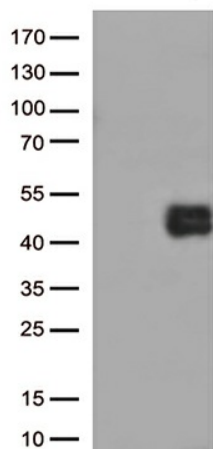


[View online »](#)

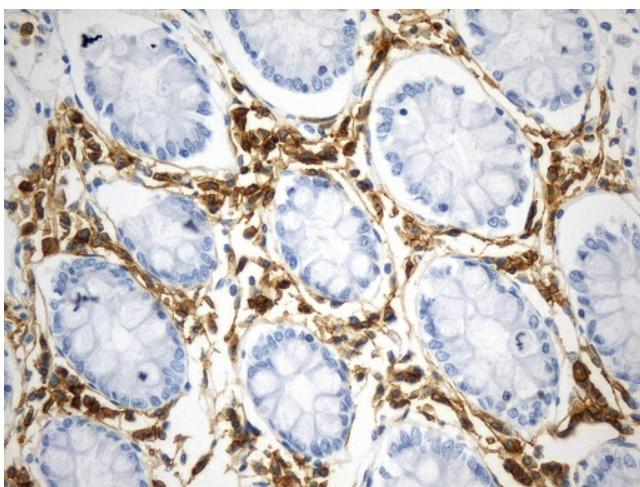
Protein Families: Cancer stem cells, Druggable Genome, ES Cell Differentiation/IPS, Induced pluripotent stem cells, Transmembrane

Protein Pathways: Calcium signaling pathway, Hematopoietic cell lineage, Metabolic pathways, Nicotinate and nicotinamide metabolism

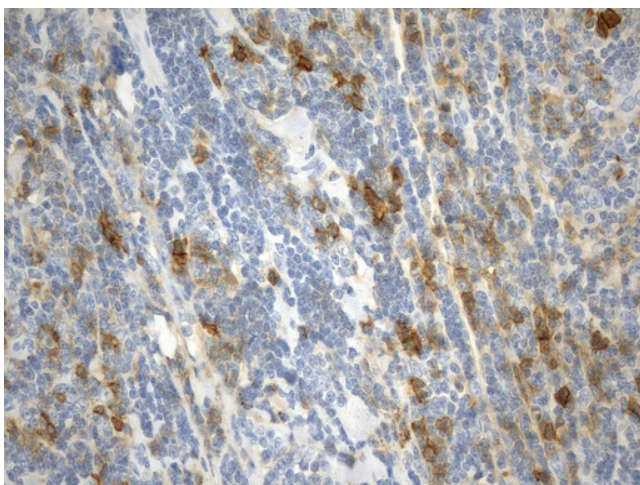
Product images:



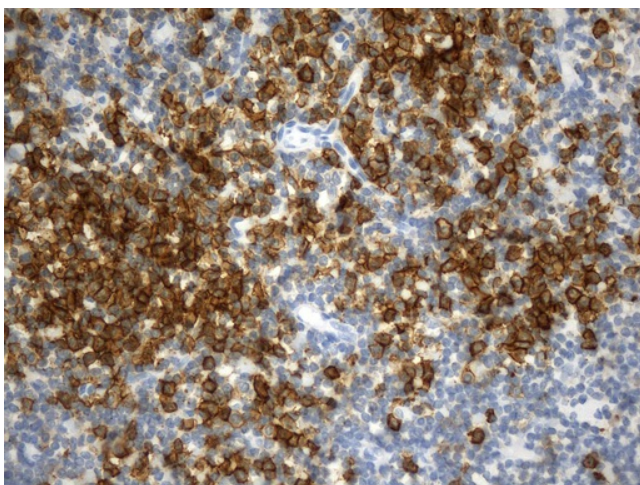
HEK293T cells were transfected with the pCMV6-ENTRY control (Left lane) or pCMV6-ENTRY CD38 ([RC203179], Right lane) cDNA for 48 hrs and lysed. Equivalent amounts of cell lysates (5 ug per lane) were separated by SDS-PAGE and immunoblotted with anti-CD38 (1:500).



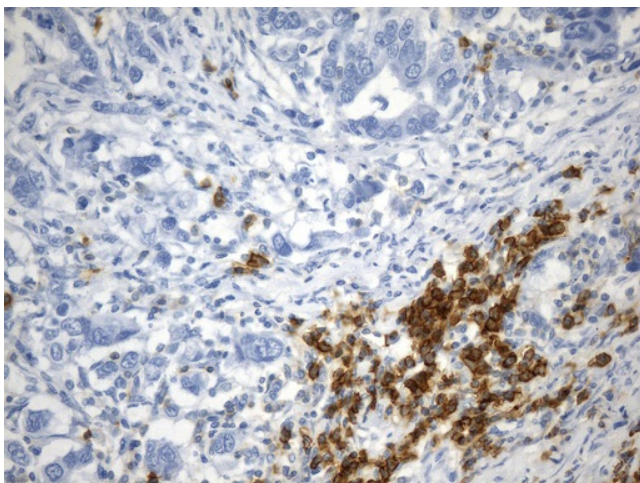
Immunohistochemical staining of paraffin-embedded Human colon tissue within the normal limits using anti-CD38 mouse monoclonal antibody. (Heat-induced epitope retrieval by 1mM EDTA in 10mM Tris buffer (pH8.0) at 120°C for 2.5 min, UM800153) (1:300)



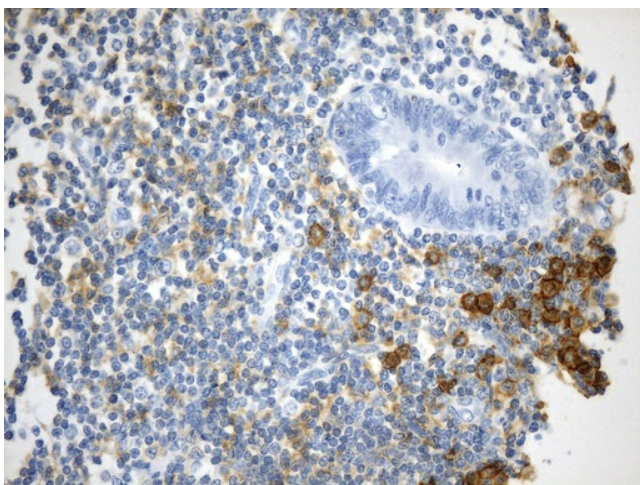
Immunohistochemical staining of paraffin-embedded Human Lymphoma tissue using anti-CD38 mouse monoclonal antibody. (Heat-induced epitope retrieval by 1mM EDTA in 10mM Tris buffer (pH8.0) at 120°C for 2.5 min, UM800153) (1:300)



Immunohistochemical staining of paraffin-embedded Human tonsil within the normal limits using anti-CD38 mouse monoclonal antibody. (Heat-induced epitope retrieval by 1mM EDTA in 10mM Tris buffer (pH8.0) at 120°C for 2.5 min, UM800153) (1:300)



Immunohistochemical staining of paraffin-embedded Human Gastric Carcinoma using anti-CD38 mouse monoclonal antibody. (Heat-induced epitope retrieval by 1mM EDTA in 10mM Tris buffer (pH8.0) at 120°C for 2.5 min, UM800153) (1:300)



Immunohistochemical staining of paraffin-embedded Human appendix tissue within the normal limits using anti-CD38 mouse monoclonal antibody. (Heat-induced epitope retrieval by 1mM EDTA in 10mM Tris buffer (pH8.0) at 120°C for 2.5 min, UM800153) (1:300)