

Product datasheet for **UM800148CF**

MSH6 Mouse Monoclonal Antibody [Clone ID: UMAB258]

Product data:

Product Type:	Primary Antibodies
Clone Name:	UMAB258
Applications:	IHC
Recommended Dilution:	IHC 1:50
Reactivity:	Human, Mouse, Rat
Host:	Mouse
Isotype:	IgG1
Clonality:	Monoclonal
Immunogen:	Human recombinant protein fragment corresponding to amino acids 1-280 of human MSH6(NP_000170) produced in E.coli.
Formulation:	Lyophilized powder (original buffer 1X PBS, pH 7.3, 8% trehalose)
Reconstitution Method:	For reconstitution, we recommend adding 100uL distilled water to a final antibody concentration of about 1 mg/mL. To use this carrier-free antibody for conjugation experiment, we strongly recommend performing another round of desalting process. (OriGene recommends Zeba Spin Desalting Columns, 7KMWCO from Thermo Scientific)
Purification:	Purified from mouse ascites fluids or tissue culture supernatant by affinity chromatography (protein A/G)
Conjugation:	Unconjugated
Storage:	Store at -20°C as received.
Stability:	Stable for 12 months from date of receipt.
Gene Name:	mutS homolog 6
Database Link:	NP_000170 Entrez Gene 17688 Mouse Entrez Gene 100360342 Rat Entrez Gene 2956 Human P52701

[View online »](#)

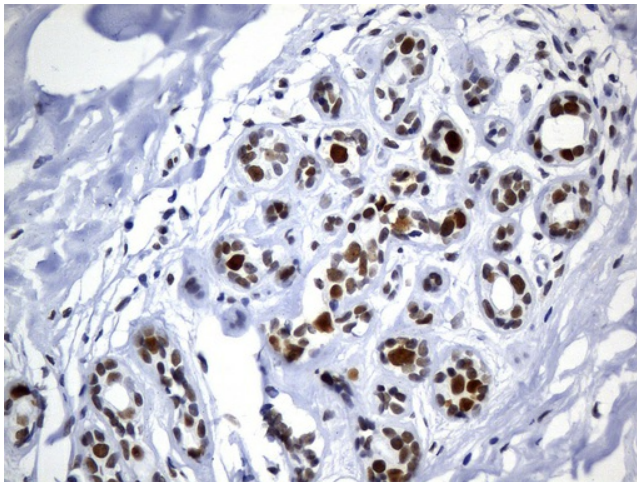
Background: This gene encodes a member of the DNA mismatch repair MutS family. In *E. coli*, the MutS protein helps in the recognition of mismatched nucleotides prior to their repair. A highly conserved region of approximately 150 aa, called the Walker-A adenine nucleotide binding motif, exists in MutS homologs. The encoded protein heterodimerizes with MSH2 to form a mismatch recognition complex that functions as a bidirectional molecular switch that exchanges ADP and ATP as DNA mismatches are bound and dissociated. Mutations in this gene may be associated with hereditary nonpolyposis colon cancer, colorectal cancer, and endometrial cancer. Transcripts variants encoding different isoforms have been described. [provided by RefSeq, Jul 2013]

Synonyms: GTBP; GTMBP; HNPCC5; HSAP; MMRC3; p160

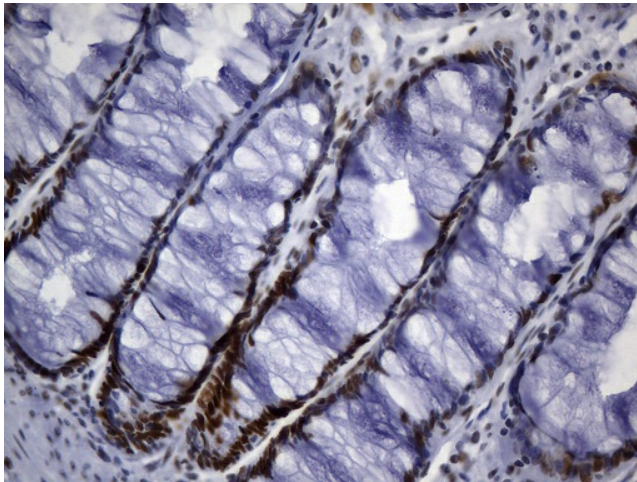
Protein Families: Druggable Genome, Stem cell - Pluripotency

Protein Pathways: Colorectal cancer, Mismatch repair, Pathways in cancer

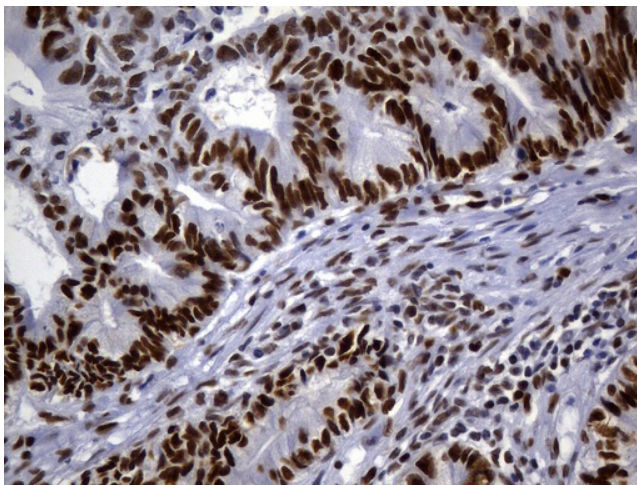
Product images:



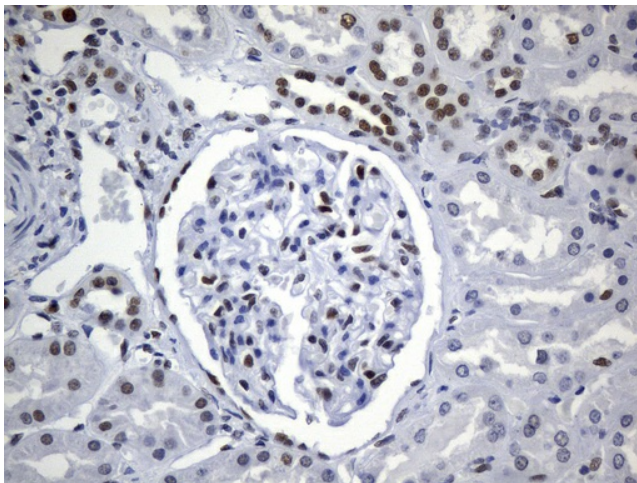
Immunohistochemical staining of paraffin-embedded human breast tissue within the normal limits using anti-MSH6 mouse monoclonal antibody. (Heat-induced epitope retrieval by 1mM EDTA in 10mM Tris buffer (pH9.0) at 120°C for 3min, [UM800148]) (1:50)



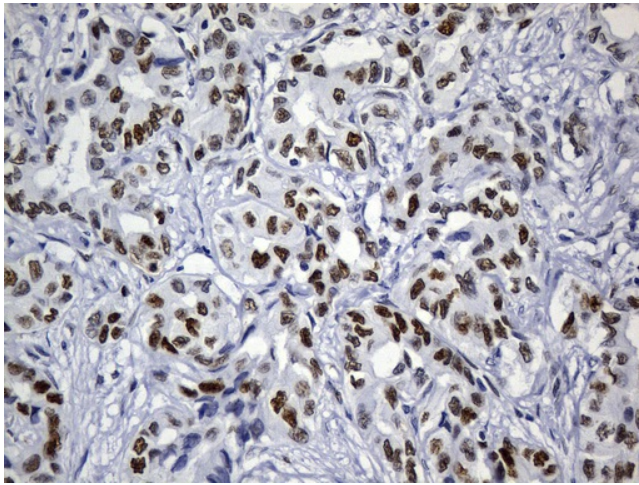
Immunohistochemical staining of paraffin-embedded human colon tissue within the normal limits using anti-MSH6 mouse monoclonal antibody. (Heat-induced epitope retrieval by 1mM EDTA in 10mM Tris buffer (pH9.0) at 120°C for 3min, [UM800148]) (1:50)



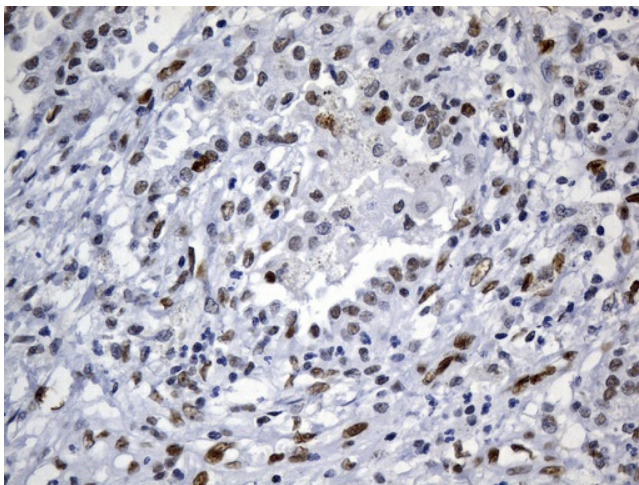
Immunohistochemical staining of paraffin-embedded human colon adenocarcinoma tissue using anti-MSH6 mouse monoclonal antibody. (Heat-induced epitope retrieval by 1mM EDTA in 10mM Tris buffer (pH9.0) at 120°C for 3min, [UM800148]) (1:50)



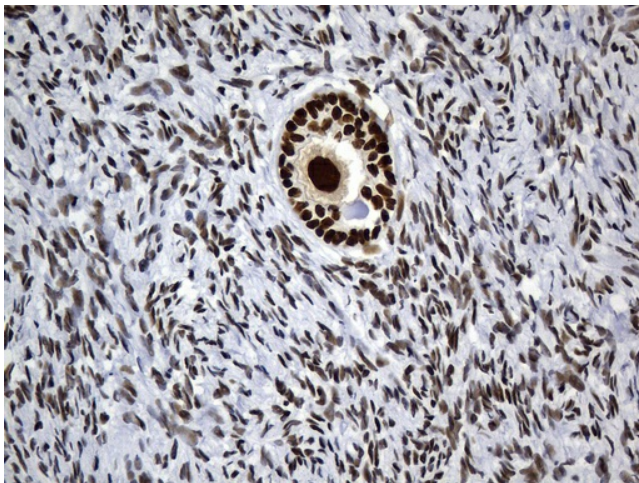
Immunohistochemical staining of paraffin-embedded human kidney tissue within the normal limits using anti-MSH6 mouse monoclonal antibody. (Heat-induced epitope retrieval by 1mM EDTA in 10mM Tris buffer (pH9.0) at 120°C for 3min, [UM800148]) (1:50)



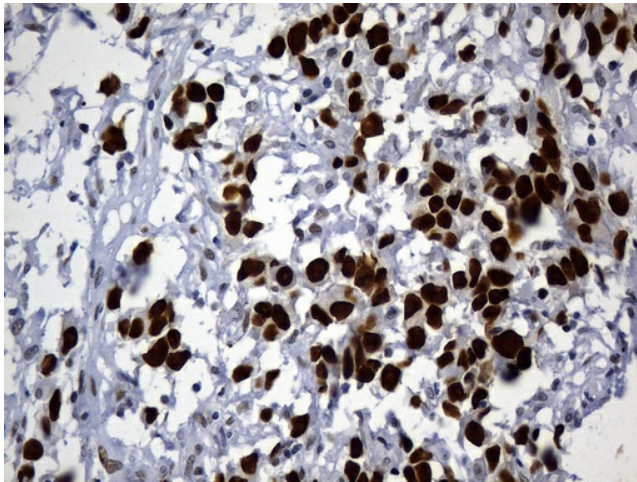
Immunohistochemical staining of paraffin-embedded human liver carcinoma tissue using anti-MSH6 mouse monoclonal antibody. (Heat-induced epitope retrieval by 1mM EDTA in 10mM Tris buffer (pH9.0) at 120°C for 3min, [UM800148]) (1:50)



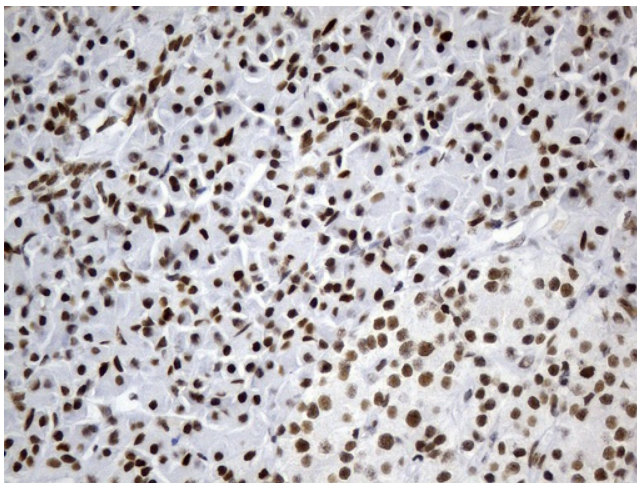
Immunohistochemical staining of paraffin-embedded human lung carcinoma tissue using anti-MSH6 mouse monoclonal antibody. (Heat-induced epitope retrieval by 1mM EDTA in 10mM Tris buffer (pH9.0) at 120°C for 3min, [UM800148]) (1:50)



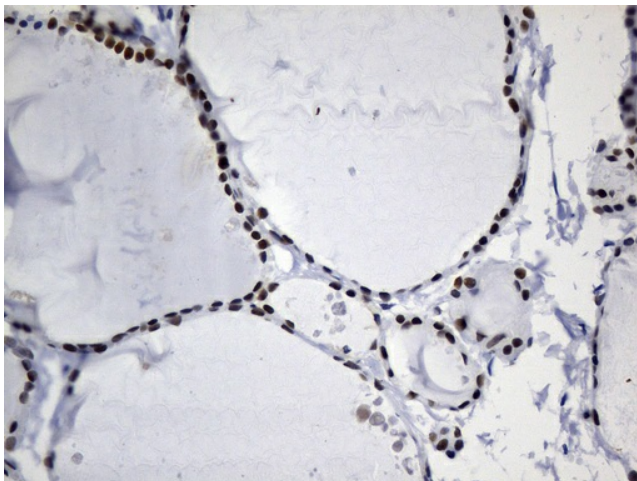
Immunohistochemical staining of paraffin-embedded human ovary within the normal limits using anti-MSH6 mouse monoclonal antibody. (Heat-induced epitope retrieval by 1mM EDTA in 10mM Tris buffer (pH9.0) at 120°C for 3min, [UM800148]) (1:50)



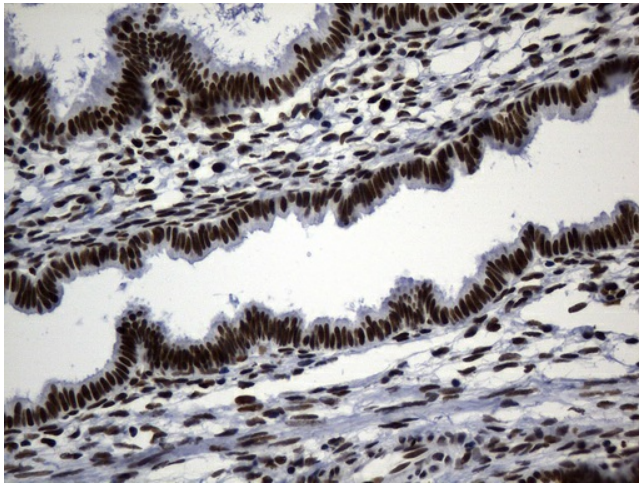
Immunohistochemical staining of paraffin-embedded human ovarian adenocarcinoma tissue using anti-MSH6 mouse monoclonal antibody. (Heat-induced epitope retrieval by 1mM EDTA in 10mM Tris buffer (pH9.0) at 120°C for 3min, [UM800148]) (1:50)



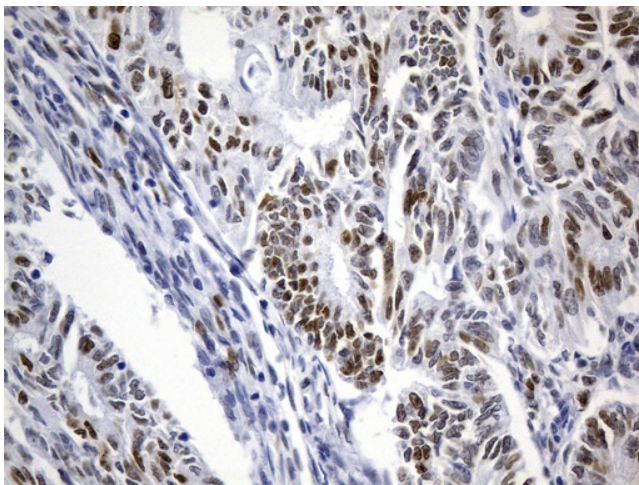
Immunohistochemical staining of paraffin-embedded human pancreas tissue within the normal limits using anti-MSH6 mouse monoclonal antibody. (Heat-induced epitope retrieval by 1mM EDTA in 10mM Tris buffer (pH9.0) at 120°C for 3min, [UM800148]) (1:50)



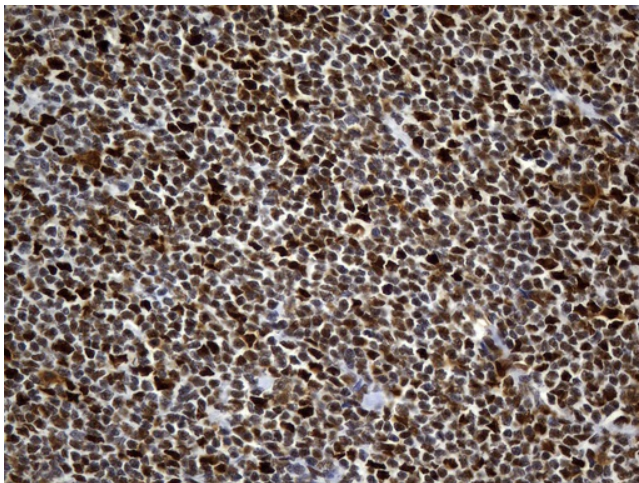
Immunohistochemical staining of paraffin-embedded human thyroid tissue within the normal limits using anti-MSH6 mouse monoclonal antibody. (Heat-induced epitope retrieval by 1mM EDTA in 10mM Tris buffer (pH9.0) at 120°C for 3min, [UM800148]) (1:50)



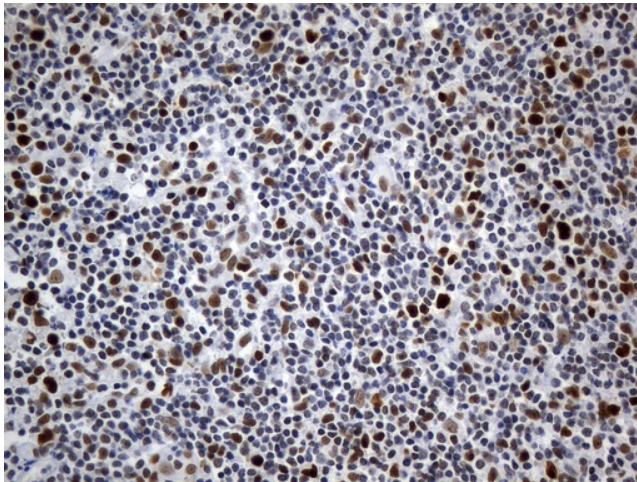
Immunohistochemical staining of paraffin-embedded human endometrium tissue within the normal limits using anti-MSH6 mouse monoclonal antibody. (Heat-induced epitope retrieval by 1mM EDTA in 10mM Tris buffer (pH9.0) at 120°C for 3min, [UM800148]) (1:50)



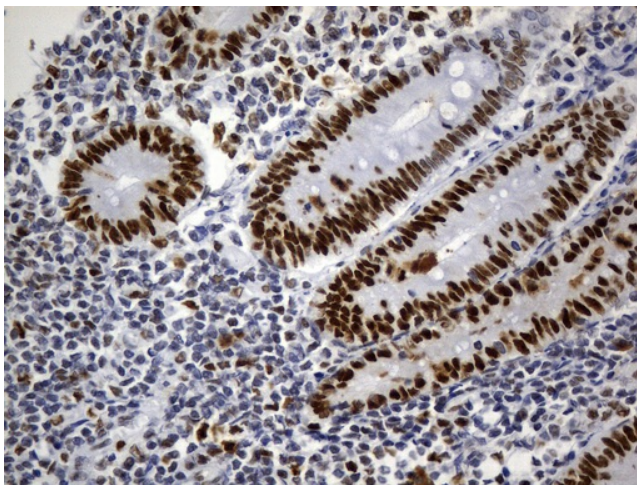
Immunohistochemical staining of paraffin-embedded human endometrium adenocarcinoma tissue using anti-MSH6 mouse monoclonal antibody. (Heat-induced epitope retrieval by 1mM EDTA in 10mM Tris buffer (pH9.0) at 120°C for 3min, [UM800148]) (1:50)



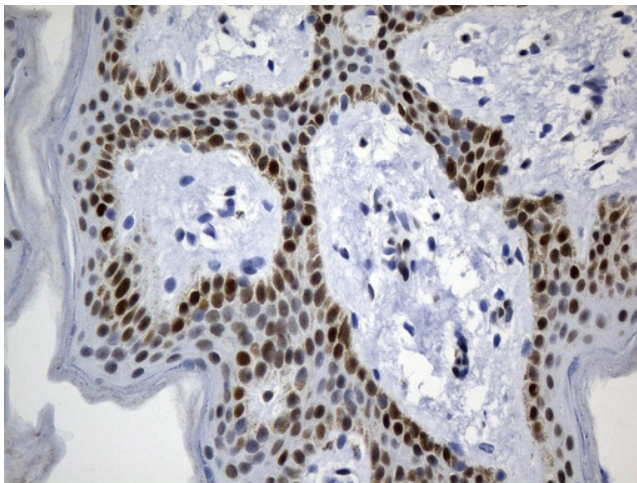
Immunohistochemical staining of paraffin-embedded human lymphoma tissue using anti-MSH6 mouse monoclonal antibody. (Heat-induced epitope retrieval by 1mM EDTA in 10mM Tris buffer (pH9.0) at 120°C for 3min, [UM800148]) (1:50)



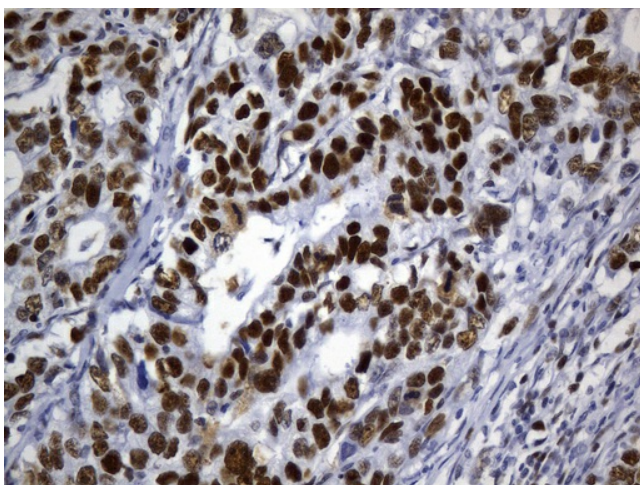
Immunohistochemical staining of paraffin-embedded human tonsil within the normal limits using anti-MSH6 mouse monoclonal antibody. (Heat-induced epitope retrieval by 1mM EDTA in 10mM Tris buffer (pH9.0) at 120°C for 3min, [UM800148]) (1:50)



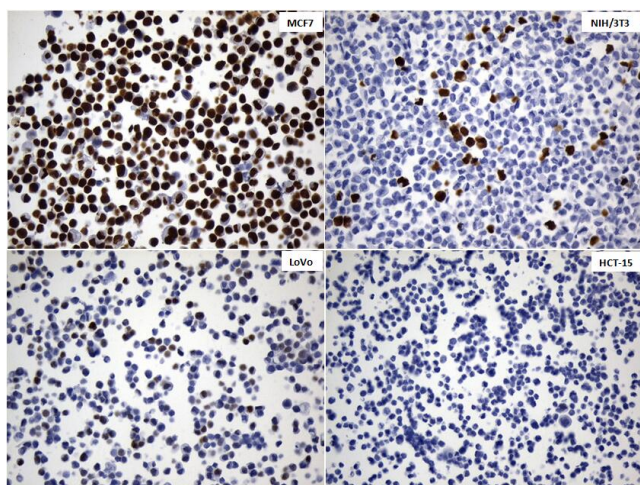
Immunohistochemical staining of paraffin-embedded human urothelial carcinoma using anti-MSH6 mouse monoclonal antibody. (Heat-induced epitope retrieval by 1mM EDTA in 10mM Tris buffer (pH9.0) at 120°C for 3min, [UM800148]) (1:50)



Immunohistochemical staining of paraffin-embedded human skin tissue within the normal limits using anti-MSH6 mouse monoclonal antibody. (Heat-induced epitope retrieval by 1mM EDTA in 10mM Tris buffer (pH9.0) at 120°C for 3min, [UM800148]) (1:50)



Immunohistochemical staining of paraffin-embedded human gastric carcinoma using anti-MSH6 mouse monoclonal antibody. (Heat-induced epitope retrieval by 1mM EDTA in 10mM Tris buffer (pH9.0) at 120°C for 3min, [UM800148]) (1:50)



Immunohistochemical staining of paraffin-embedded "MCF7", "NIH/3T3", "LoVo" and "HCT-15" cell pellets using anti-MSH6 Mouse monoclonal antibody (Heat-induced epitope retrieval by Tris-EDTA buffer (pH9.0) at 120°C for 2.5 min, 1:50)