

## Product datasheet for **UM800142CF**

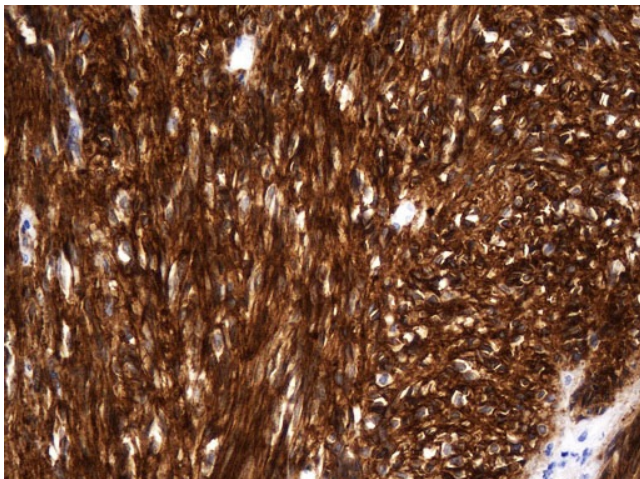
### **TMEM16A (ANO1) Mouse Monoclonal Antibody [Clone ID: UMAB250]**

#### **Product data:**

<b>Product Type:</b>	Primary Antibodies
<b>Clone Name:</b>	UMAB250
<b>Applications:</b>	IHC
<b>Recommended Dilution:</b>	IHC 1:2000
<b>Reactivity:</b>	Human, Mouse, Rat
<b>Host:</b>	Mouse
<b>Isotype:</b>	IgG2a
<b>Clonality:</b>	Monoclonal
<b>Immunogen:</b>	Human recombinant protein fragment corresponding to amino acids 1-333 of human ANO1 (Dog1) (NP_060513) produced in E.coli.
<b>Formulation:</b>	Lyophilized powder (original buffer 1X PBS, pH 7.3, 8% trehalose)
<b>Reconstitution Method:</b>	For reconstitution, we recommend adding 100uL distilled water to a final antibody concentration of about 1 mg/mL. To use this carrier-free antibody for conjugation experiment, we strongly recommend performing another round of desalting process. (OriGene recommends Zeba Spin Desalting Columns, 7KMWCO from Thermo Scientific)
<b>Purification:</b>	Purified from mouse ascites fluids or tissue culture supernatant by affinity chromatography (protein A/G)
<b>Conjugation:</b>	Unconjugated
<b>Storage:</b>	Store at -20°C as received.
<b>Stability:</b>	Stable for 12 months from date of receipt.
<b>Gene Name:</b>	anoctamin 1
<b>Database Link:</b>	<a href="#">NP_060513</a> <a href="#">Entrez Gene 101772 Mouse</a> <a href="#">Entrez Gene 309135 Rat</a> <a href="#">Entrez Gene 55107 Human</a> <a href="#">Q5XXA6</a>
<b>Synonyms:</b>	DOG1; ORAOV2; TAOS2; TMEM16A
<b>Protein Families:</b>	Transmembrane



[View online »](#)

**Product images:**

Immunohistochemical staining of paraffin-embedded Human gastric stromal tumor tissue using anti-ANO1 (Dog1) mouse monoclonal antibody. (Heat-induced epitope retrieval by Tris-EDTA in 10mM Tris buffer (pH8.0) at 120°C for 2.5 min, [UM800142]) (1:2000)