

Product datasheet for **UM800141CF**

CTLA4 Mouse Monoclonal Antibody [Clone ID: UMAB249]

Product data:

Product Type:	Primary Antibodies
Clone Name:	UMAB249
Applications:	IHC
Recommended Dilution:	IHC 1:200
Reactivity:	Human
Host:	Mouse
Isotype:	IgG1
Clonality:	Monoclonal
Immunogen:	Full length human recombinant protein of human CTLA4 (NP_001032720) produced in HEK293T cell.
Formulation:	Lyophilized powder (original buffer 1X PBS, pH 7.3, 8% trehalose)
Reconstitution Method:	For reconstitution, we recommend adding 100uL distilled water to a final antibody concentration of about 1 mg/mL. To use this carrier-free antibody for conjugation experiment, we strongly recommend performing another round of desalting process. (OriGene recommends Zeba Spin Desalting Columns, 7KMWCO from Thermo Scientific)
Purification:	Purified from mouse ascites fluids or tissue culture supernatant by affinity chromatography (protein A/G)
Conjugation:	Unconjugated
Storage:	Store at -20°C as received.
Stability:	Stable for 12 months from date of receipt.
Predicted Protein Size:	19.15 kDa
Gene Name:	Homo sapiens cytotoxic T-lymphocyte associated protein 4 (CTLA4), transcript variant 2, mRNA.
Database Link:	NP_001032720 Entrez Gene 1493 Human P16410
Synonyms:	ALPS5; CD; CD152; CELIAC3; CTLA-4; GRD4; GSE; IDDM12

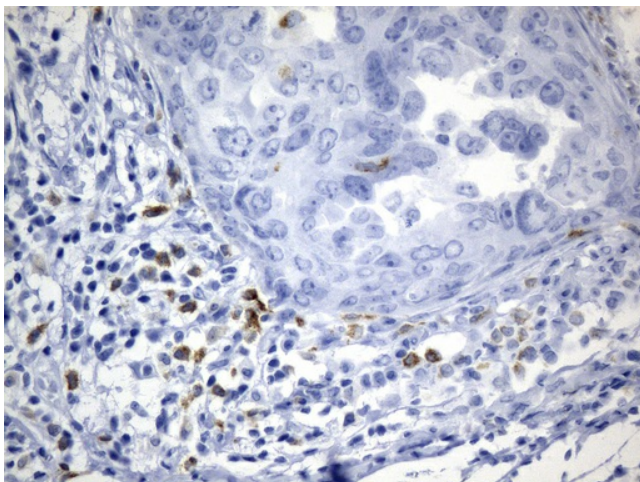


[View online »](#)

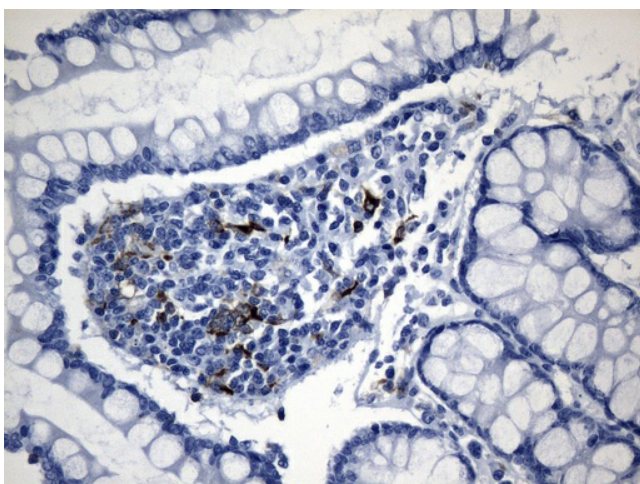
Protein Families: Druggable Genome, Transmembrane

Protein Pathways: Autoimmune thyroid disease, Cell adhesion molecules (CAMs), T cell receptor signaling pathway

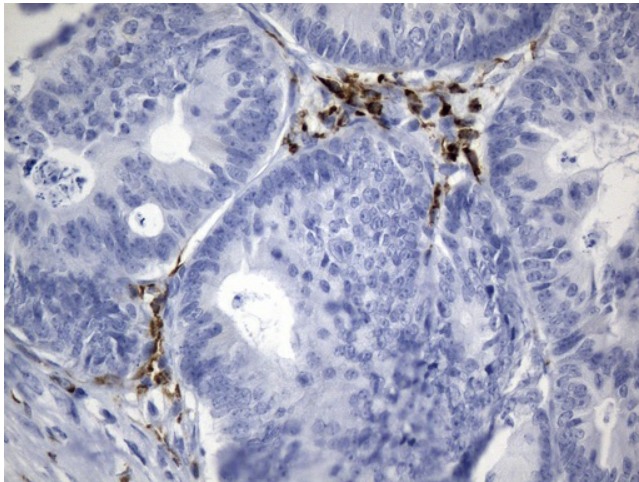
Product images:



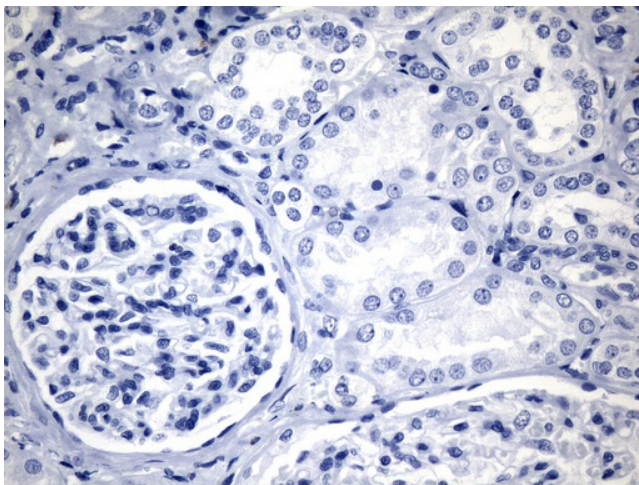
Immunohistochemical staining of paraffin-embedded Adenocarcinoma of Human breast tissue using anti-CTLA4 mouse monoclonal antibody. (Heat-induced epitope retrieval by 1mM EDTA in 10mM Tris buffer (pH8.5) at 120°C for 3min, [UM800141]) (1:200)



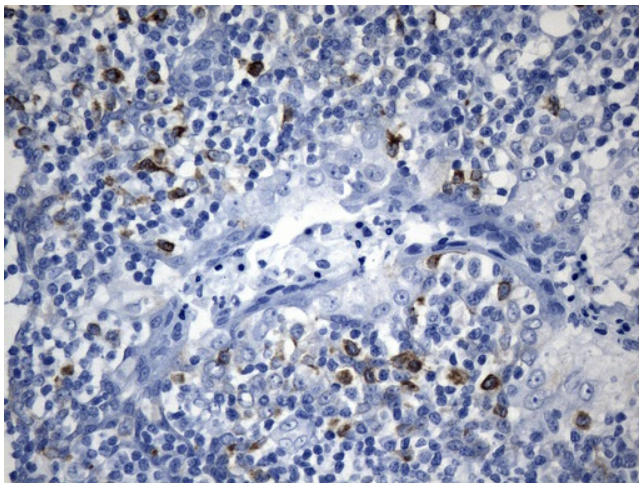
Immunohistochemical staining of paraffin-embedded Human colon tissue within the normal limits using anti-CTLA4 mouse monoclonal antibody. (Heat-induced epitope retrieval by 1mM EDTA in 10mM Tris buffer (pH8.5) at 120°C for 3min, [UM800141]) (1:200)



Immunohistochemical staining of paraffin-embedded Adenocarcinoma of Human colon tissue using anti-CTLA4 mouse monoclonal antibody. (Heat-induced epitope retrieval by 1mM EDTA in 10mM Tris buffer (pH8.5) at 120°C for 3min, [UM800141]) (1:200)



Immunohistochemical staining of paraffin-embedded Human Kidney tissue (CTLA4 negative) within the normal limits using anti-CTLA4 mouse monoclonal antibody. (Heat-induced epitope retrieval by 1mM EDTA in 10mM Tris buffer (pH8.5) at 120°C for 3min, [UM800141]) (1:200)



Immunohistochemical staining of paraffin-embedded Human tonsil within the normal limits using anti-CTLA4 mouse monoclonal antibody. (Heat-induced epitope retrieval by 1mM EDTA in 10mM Tris buffer (pH8.5) at 120°C for 3min, [UM800141]) (1:200)