

## Product datasheet for **UM800139CF**

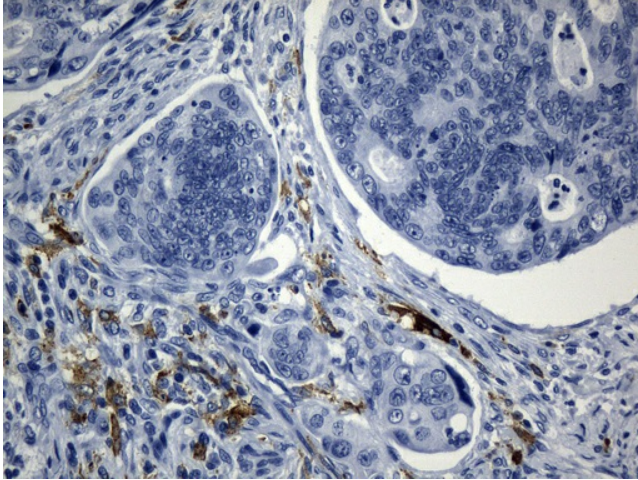
### Macrophage Scavenger Receptor I (MSR1) Mouse Monoclonal Antibody [Clone ID: UMAB247]

#### Product data:

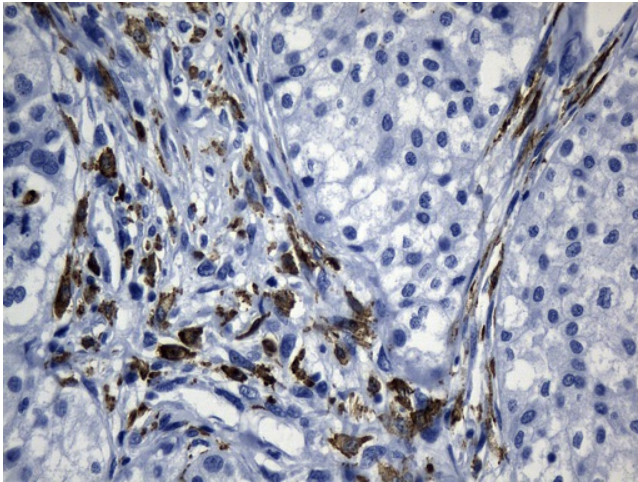
Product Type:	Primary Antibodies
Clone Name:	UMAB247
Applications:	10k-ChIP, IHC
Recommended Dilution:	IHC 1:100~1200
Reactivity:	Human
Host:	Mouse
Isotype:	IgG1
Clonality:	Monoclonal
Immunogen:	Human recombinant protein fragment corresponding to amino acids 197-451 of human MSR1(NP_619730) produced in E.coli.
Formulation:	Lyophilized powder (original buffer 1X PBS, pH 7.3, 8% trehalose)
Reconstitution Method:	For reconstitution, we recommend adding 100uL distilled water to a final antibody concentration of about 1 mg/mL. To use this carrier-free antibody for conjugation experiment, we strongly recommend performing another round of desalting process. (OriGene recommends Zeba Spin Desalting Columns, 7KMWCO from Thermo Scientific)
Purification:	Purified from mouse ascites fluids or tissue culture supernatant by affinity chromatography (protein A/G)
Conjugation:	Unconjugated
Storage:	Store at -20°C as received.
Stability:	Stable for 12 months from date of receipt.
Predicted Protein Size:	42.8 kDa
Gene Name:	macrophage scavenger receptor 1
Database Link:	<a href="#">NP_619730</a> <a href="#">Entrez Gene 4481 Human</a> <a href="#">P21757</a>
Synonyms:	CD204; phSR1; phSR2; SCARA1; SR-A; SRA
Protein Families:	Druggable Genome, Transmembrane



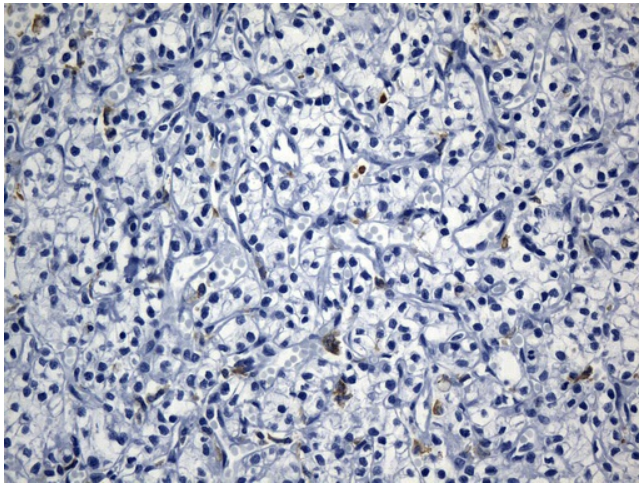
[View online »](#)

**Product images:**

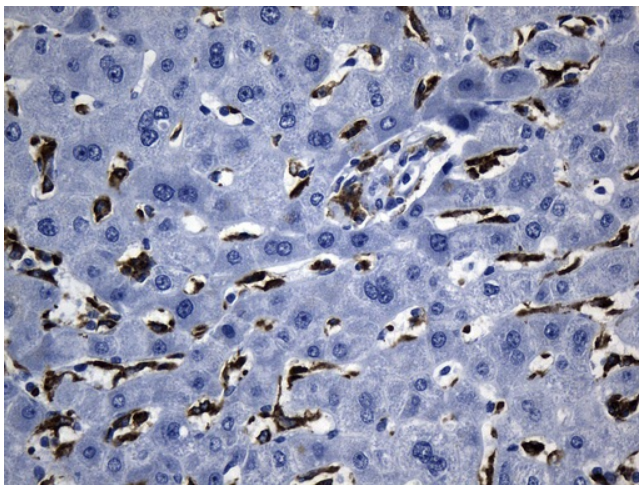
Immunohistochemical staining of paraffin-embedded Adenocarcinoma of Human colon tissue using anti-MSR1 mouse monoclonal antibody. (Heat-induced epitope retrieval by 1mM EDTA in 10mM Tris buffer (pH8.5) at 120°C for 3min, [UM800139]) (1:1200)



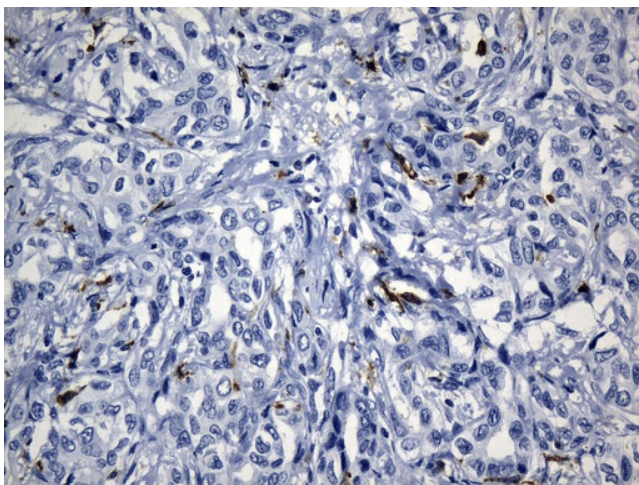
Immunohistochemical staining of paraffin-embedded Human Kidney tissue within the normal limits using anti-MSR1 mouse monoclonal antibody. (Heat-induced epitope retrieval by 1mM EDTA in 10mM Tris buffer (pH8.5) at 120°C for 3min, [UM800139]) (1:1200)



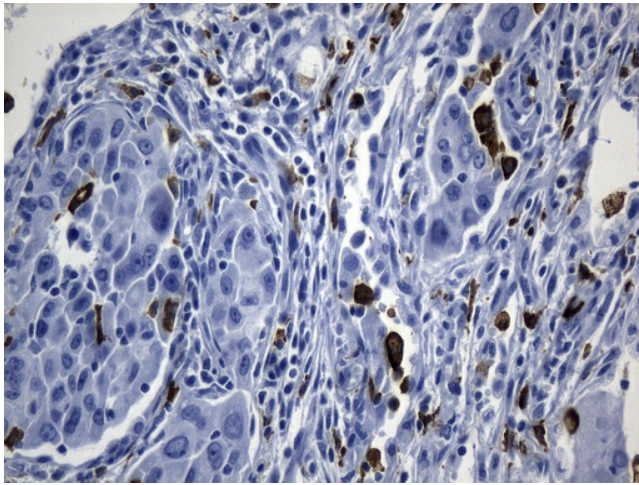
Immunohistochemical staining of paraffin-embedded Carcinoma of Human kidney tissue using anti-MSR1 mouse monoclonal antibody. (Heat-induced epitope retrieval by 1mM EDTA in 10mM Tris buffer (pH8.5) at 120°C for 3min, [UM800139]) (1:1200)



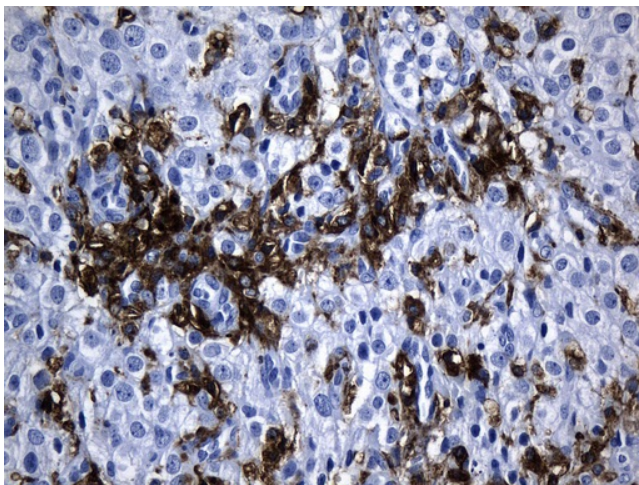
Immunohistochemical staining of paraffin-embedded Human liver tissue within the normal limits using anti-MSR1 mouse monoclonal antibody. (Heat-induced epitope retrieval by 1mM EDTA in 10mM Tris buffer (pH8.5) at 120°C for 3min, [UM800139]) (1:1200)



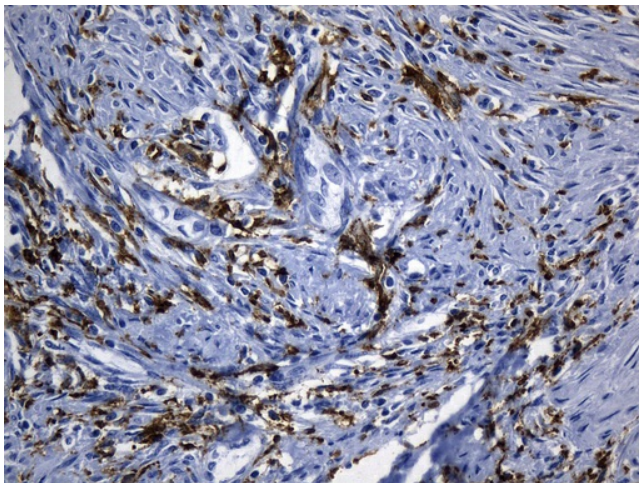
Immunohistochemical staining of paraffin-embedded Carcinoma of Human liver tissue using anti-MSR1 mouse monoclonal antibody. (Heat-induced epitope retrieval by 1mM EDTA in 10mM Tris buffer (pH8.5) at 120°C for 3min, [UM800139]) (1:1200)



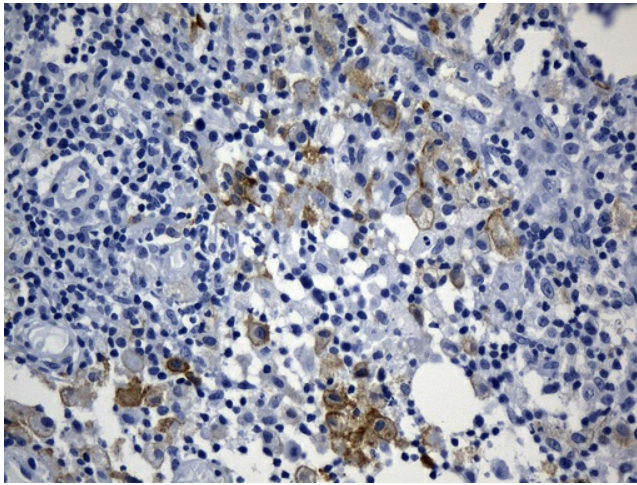
Immunohistochemical staining of paraffin-embedded Carcinoma of Human lung tissue using anti-MSR1 mouse monoclonal antibody. (Heat-induced epitope retrieval by 1mM EDTA in 10mM Tris buffer (pH8.5) at 120°C for 3min, [UM800139]) (1:1200)



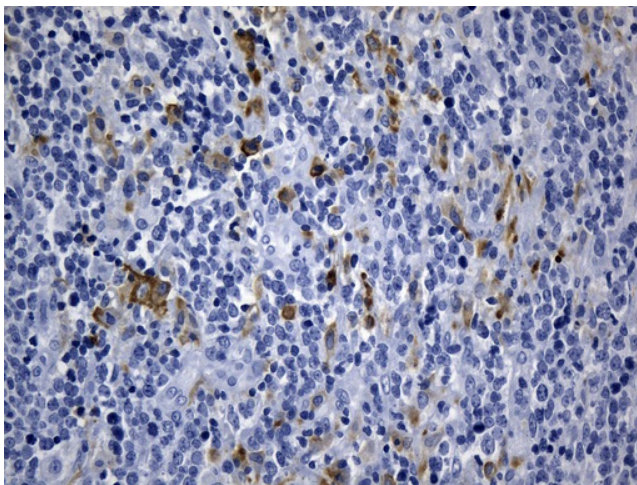
Immunohistochemical staining of paraffin-embedded Human Ovary tissue within the normal limits using anti-MSR1 mouse monoclonal antibody. (Heat-induced epitope retrieval by 1mM EDTA in 10mM Tris buffer (pH8.5) at 120°C for 3min, [UM800139]) (1:1200)



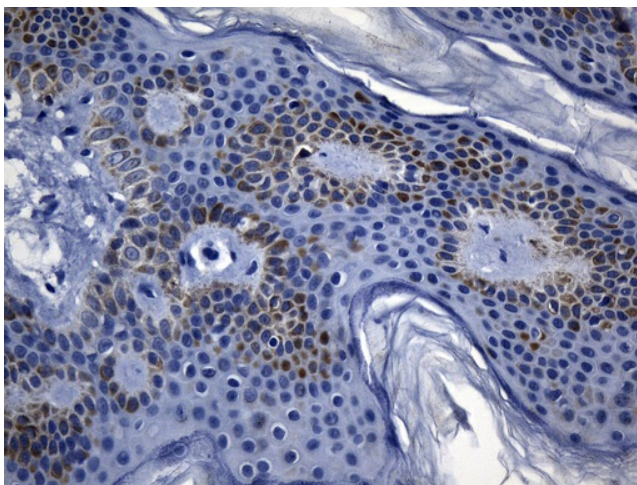
Immunohistochemical staining of paraffin-embedded Adenocarcinoma of Human endometrium tissue using anti-MSR1 mouse monoclonal antibody. (Heat-induced epitope retrieval by 1mM EDTA in 10mM Tris buffer (pH8.5) at 120°C for 3min, [UM800139]) (1:1200)



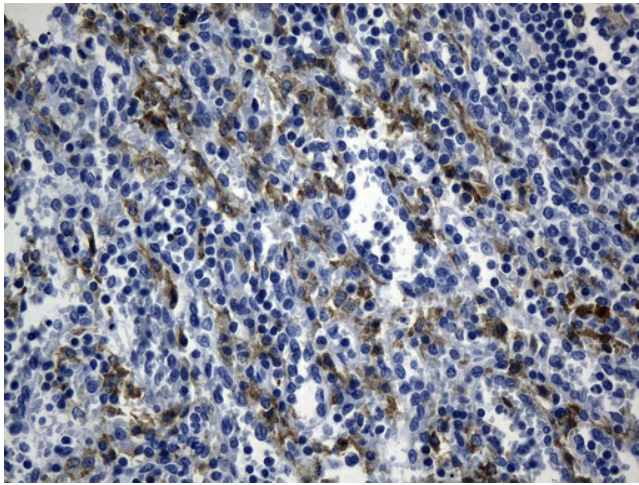
Immunohistochemical staining of paraffin-embedded Carcinoma of Human bladder tissue using anti-MSR1 mouse monoclonal antibody. (Heat-induced epitope retrieval by 1mM EDTA in 10mM Tris buffer (pH8.5) at 120°C for 3min, [UM800139]) (1:1200)



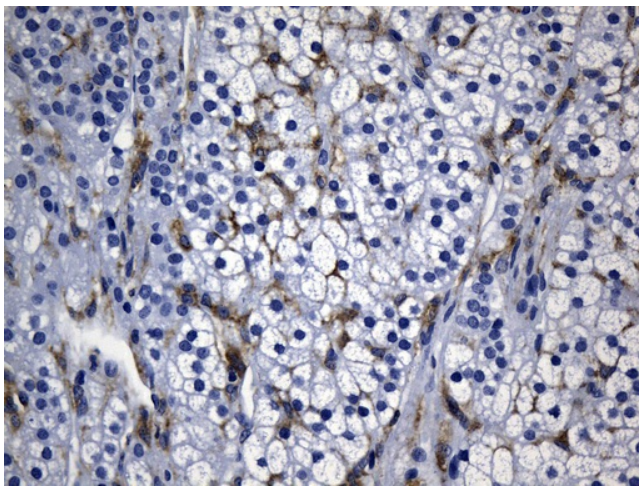
Immunohistochemical staining of paraffin-embedded Human lymphoma tissue using anti-MSR1 mouse monoclonal antibody. (Heat-induced epitope retrieval by 1mM EDTA in 10mM Tris buffer (pH8.5) at 120°C for 3min, [UM800139]) (1:1200)



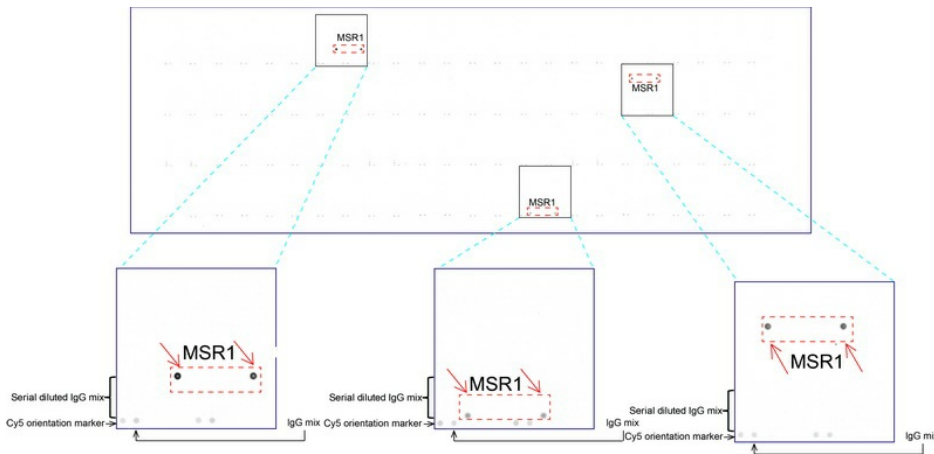
Immunohistochemical staining of paraffin-embedded Human skin tissue within the normal limits using anti-MSR1 mouse monoclonal antibody. (Heat-induced epitope retrieval by 1mM EDTA in 10mM Tris buffer (pH8.5) at 120°C for 3min, [UM800139]) (1:1200)



Immunohistochemical staining of paraffin-embedded Human spleen tissue within the normal limits using anti-MSR1 mouse monoclonal antibody. (Heat-induced epitope retrieval by 1mM EDTA in 10mM Tris buffer (pH8.5) at 120°C for 3min, [UM800139]) (1:1200).



Immunohistochemical staining of paraffin-embedded Human paranephros tissue within the normal limits using anti-MSR1 mouse monoclonal antibody. (Heat-induced epitope retrieval by 1mM EDTA in 10mM Tris buffer (pH8.5) at 120°C for 3min, [UM800139]) (1:1200).



OriGene overexpression protein microarray chip was immunostained with UltraMAB anti-MSR1 mouse monoclonal antibody ([UM800139]). The positive reactive proteins are highlighted with two red arrows in the enlarged subarray. All the positive controls spotted in this subarray are also labeled for clarification (1:100).