

Product datasheet for **UM800139**

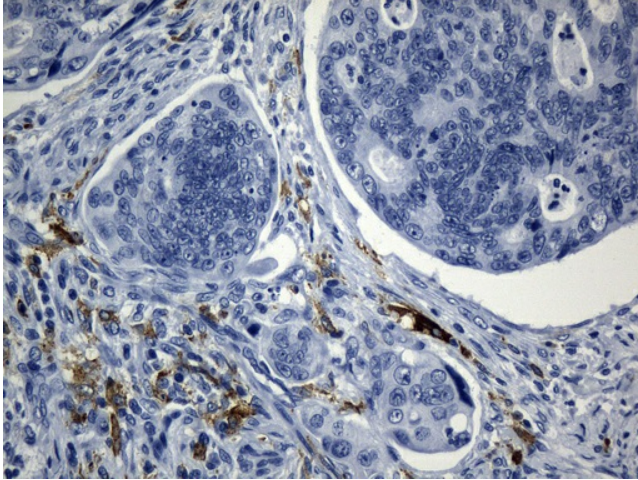
Macrophage Scavenger Receptor I (MSR1) Mouse Monoclonal Antibody [Clone ID: UMAB247]

Product data:

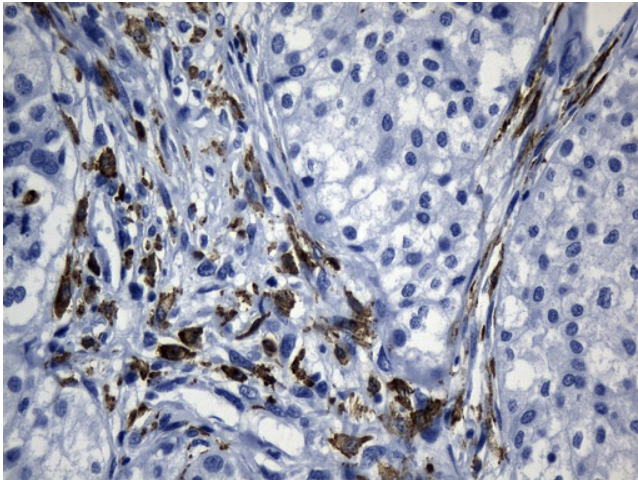
Product Type:	Primary Antibodies
Clone Name:	UMAB247
Applications:	10k-ChIP, IHC
Recommended Dilution:	IHC 1:100~1200
Reactivity:	Human
Host:	Mouse
Isotype:	IgG1
Clonality:	Monoclonal
Immunogen:	Human recombinant protein fragment corresponding to amino acids 197-451 of human MSR1(NP_619730) produced in E.coli.
Formulation:	PBS (pH 7.3) containing 1% BSA, 50% glycerol and 0.02% sodium azide.
Concentration:	0.5~1.0 mg/ml (Lot Dependent)
Purification:	Purified from mouse ascites fluids or tissue culture supernatant by affinity chromatography (protein A/G)
Conjugation:	Unconjugated
Storage:	Store at -20°C as received.
Stability:	Stable for 12 months from date of receipt.
Predicted Protein Size:	42.8 kDa
Gene Name:	macrophage scavenger receptor 1
Database Link:	NP_619730 Entrez Gene 4481 Human P21757
Synonyms:	CD204; phSR1; phSR2; SCARA1; SR-A; SRA
Protein Families:	Druggable Genome, Transmembrane



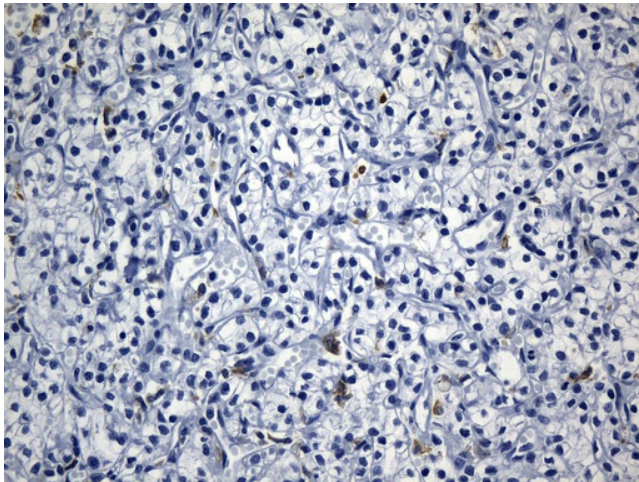
[View online »](#)

Product images:

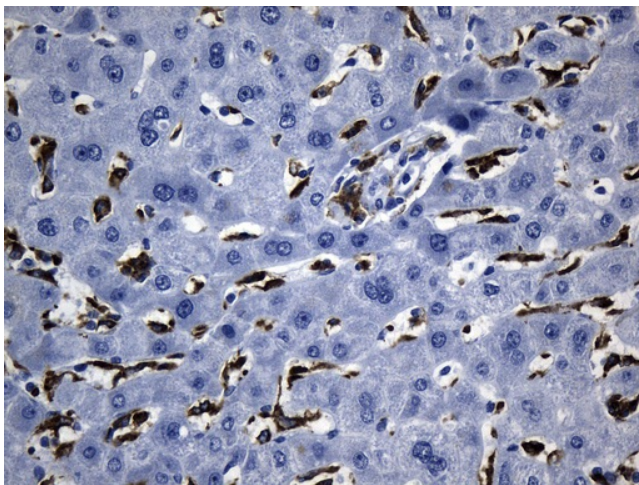
Immunohistochemical staining of paraffin-embedded Adenocarcinoma of Human colon tissue using anti-MSR1 mouse monoclonal antibody. (Heat-induced epitope retrieval by 1mM EDTA in 10mM Tris buffer (pH8.5) at 120°C for 3min, UM800139) (1:1200)



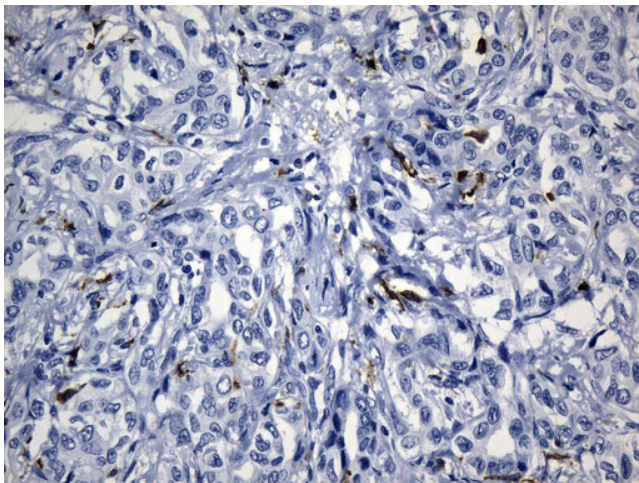
Immunohistochemical staining of paraffin-embedded Human Kidney tissue within the normal limits using anti-MSR1 mouse monoclonal antibody. (Heat-induced epitope retrieval by 1mM EDTA in 10mM Tris buffer (pH8.5) at 120°C for 3min, UM800139) (1:1200)



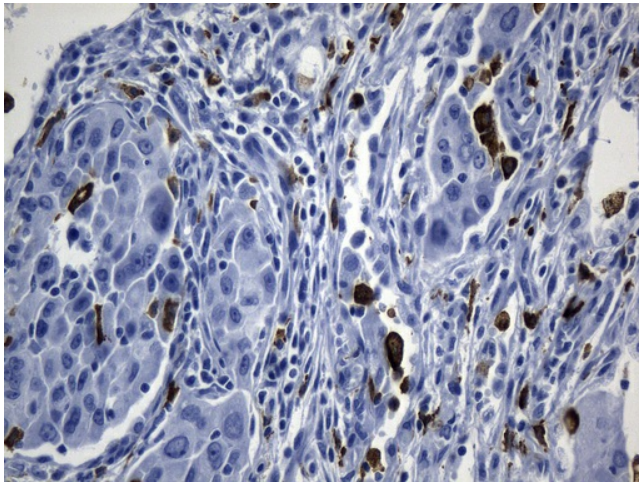
Immunohistochemical staining of paraffin-embedded Carcinoma of Human kidney tissue using anti-MSR1 mouse monoclonal antibody. (Heat-induced epitope retrieval by 1mM EDTA in 10mM Tris buffer (pH8.5) at 120°C for 3min, UM800139) (1:1200)



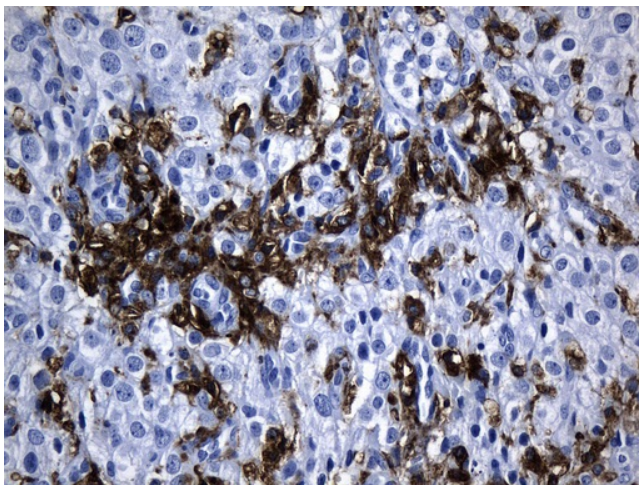
Immunohistochemical staining of paraffin-embedded Human liver tissue within the normal limits using anti-MSR1 mouse monoclonal antibody. (Heat-induced epitope retrieval by 1mM EDTA in 10mM Tris buffer (pH8.5) at 120°C for 3min, UM800139) (1:1200)



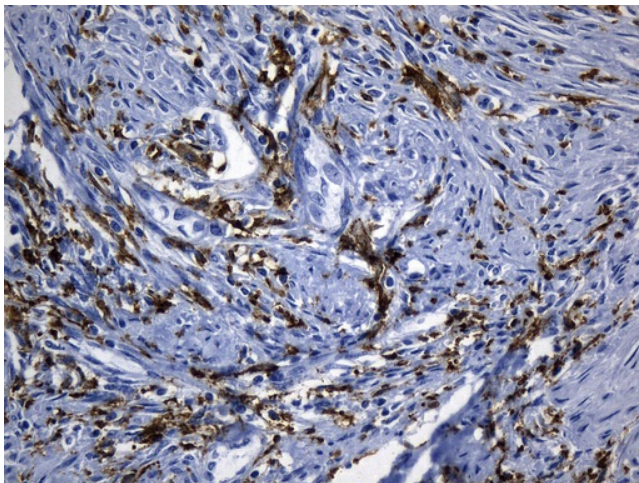
Immunohistochemical staining of paraffin-embedded Carcinoma of Human liver tissue using anti-MSR1 mouse monoclonal antibody. (Heat-induced epitope retrieval by 1mM EDTA in 10mM Tris buffer (pH8.5) at 120°C for 3min, UM800139) (1:1200)



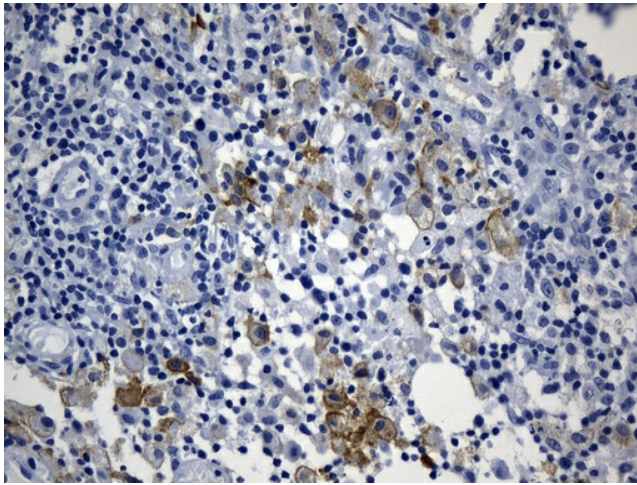
Immunohistochemical staining of paraffin-embedded Carcinoma of Human lung tissue using anti-MSR1 mouse monoclonal antibody. (Heat-induced epitope retrieval by 1mM EDTA in 10mM Tris buffer (pH8.5) at 120°C for 3min, UM800139) (1:1200)



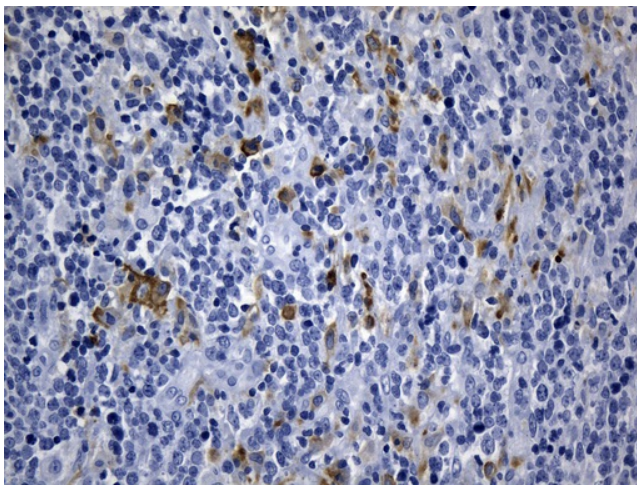
Immunohistochemical staining of paraffin-embedded Human Ovary tissue within the normal limits using anti-MSR1 mouse monoclonal antibody. (Heat-induced epitope retrieval by 1mM EDTA in 10mM Tris buffer (pH8.5) at 120°C for 3min, UM800139) (1:1200)



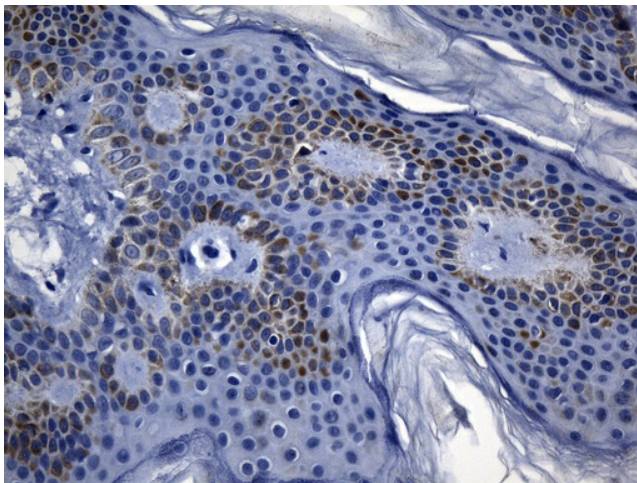
Immunohistochemical staining of paraffin-embedded Adenocarcinoma of Human endometrium tissue using anti-MSR1 mouse monoclonal antibody. (Heat-induced epitope retrieval by 1mM EDTA in 10mM Tris buffer (pH8.5) at 120°C for 3min, UM800139) (1:1200)



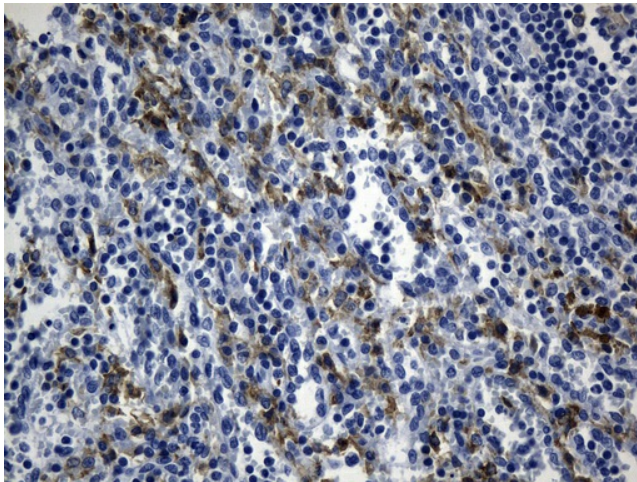
Immunohistochemical staining of paraffin-embedded Carcinoma of Human bladder tissue using anti-MSR1 mouse monoclonal antibody. (Heat-induced epitope retrieval by 1mM EDTA in 10mM Tris buffer (pH8.5) at 120°C for 3min, UM800139) (1:1200)



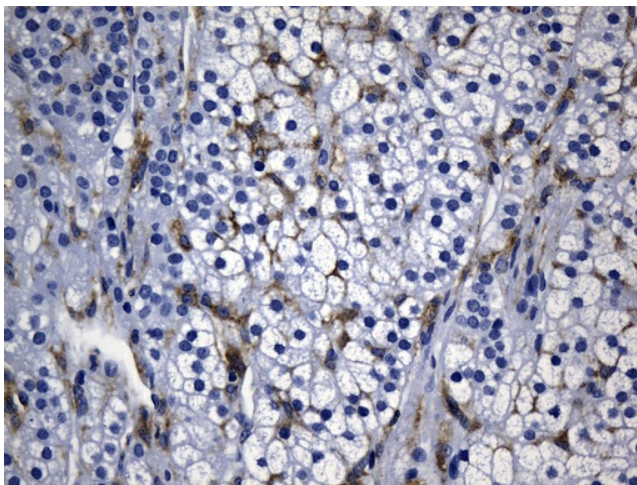
Immunohistochemical staining of paraffin-embedded Human lymphoma tissue using anti-MSR1 mouse monoclonal antibody. (Heat-induced epitope retrieval by 1mM EDTA in 10mM Tris buffer (pH8.5) at 120°C for 3min, UM800139) (1:1200)



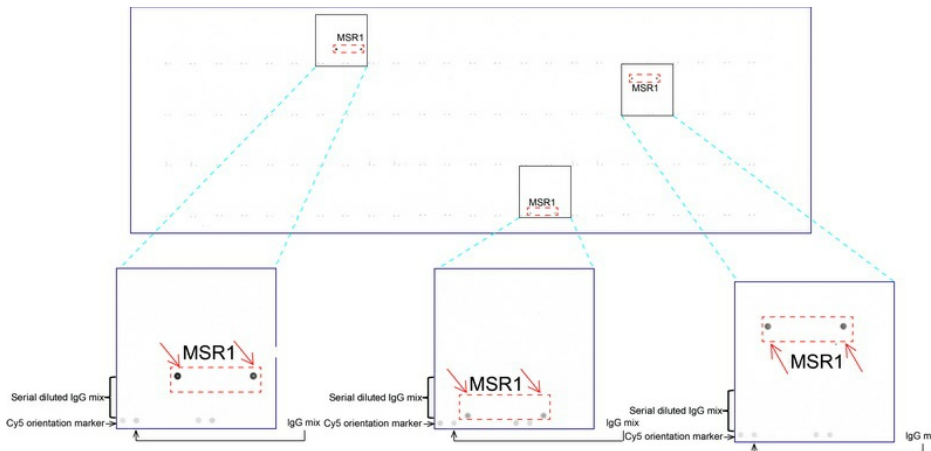
Immunohistochemical staining of paraffin-embedded Human skin tissue within the normal limits using anti-MSR1 mouse monoclonal antibody. (Heat-induced epitope retrieval by 1mM EDTA in 10mM Tris buffer (pH8.5) at 120°C for 3min, UM800139) (1:1200)



Immunohistochemical staining of paraffin-embedded Human spleen tissue within the normal limits using anti-MSR1 mouse monoclonal antibody. (Heat-induced epitope retrieval by 1mM EDTA in 10mM Tris buffer (pH8.5) at 120°C for 3min, UM800139) (1:1200).



Immunohistochemical staining of paraffin-embedded Human paranephros tissue within the normal limits using anti-MSR1 mouse monoclonal antibody. (Heat-induced epitope retrieval by 1mM EDTA in 10mM Tris buffer (pH8.5) at 120°C for 3min, UM800139) (1:1200).



OriGene overexpression protein microarray chip was immunostained with UltraMAB anti-MSR1 mouse monoclonal antibody (UM800139). The positive reactive proteins are highlighted with two red arrows in the enlarged subarray. All the positive controls spotted in this subarray are also labeled for clarification (1:100).