

Product datasheet for **UM800136**

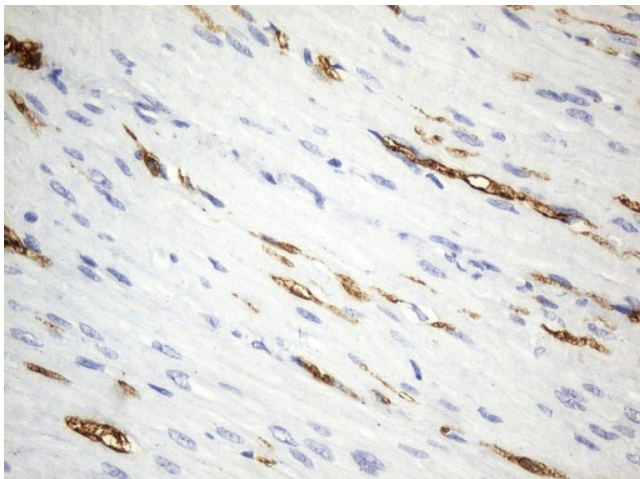
PGP9.5 (UCHL1) Mouse Monoclonal Antibody [Clone ID: UMAB244]

Product data:

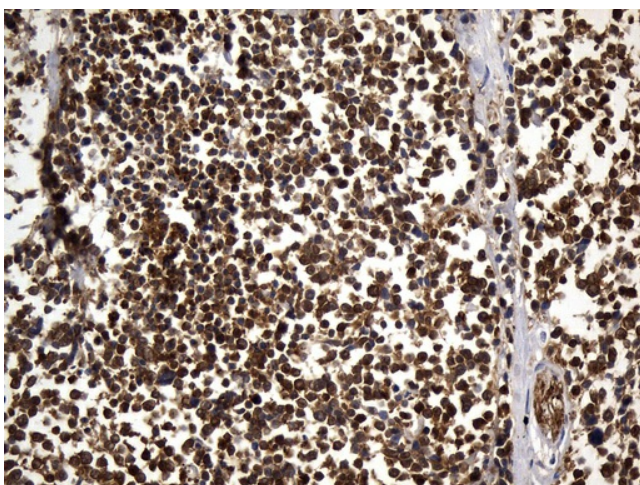
Product Type:	Primary Antibodies
Clone Name:	UMAB244
Applications:	10k-ChIP, IHC, WB
Recommended Dilution:	IHC 1:100~600
Reactivity:	Human, Mouse, Rat
Host:	Mouse
Isotype:	IgG1
Clonality:	Monoclonal
Immunogen:	Full length human recombinant protein of human UCHL1(NP_004172) produced in HEK293T cell.
Formulation:	PBS (pH 7.3) containing 1% BSA, 50% glycerol and 0.02% sodium azide.
Concentration:	0.5~1.0 mg/ml (Lot Dependent)
Purification:	Purified from mouse ascites fluids or tissue culture supernatant by affinity chromatography (protein A/G)
Conjugation:	Unconjugated
Storage:	Store at -20°C as received.
Stability:	Stable for 12 months from date of receipt.
Predicted Protein Size:	24.6 kDa
Gene Name:	ubiquitin C-terminal hydrolase L1
Database Link:	NP_004172 Entrez Gene 22223 Mouse Entrez Gene 29545 Rat Entrez Gene 7345 Human P09936
Synonyms:	HEL-117; NDGOA; PARK5; PGP 9.5; PGP9.5; PGP95; Uch-L1
Protein Families:	Druggable Genome, Protease
Protein Pathways:	Parkinson's disease


[View online »](#)

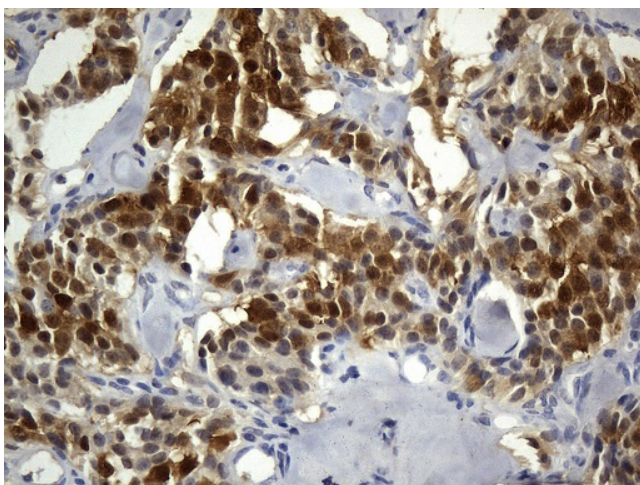
Product images:



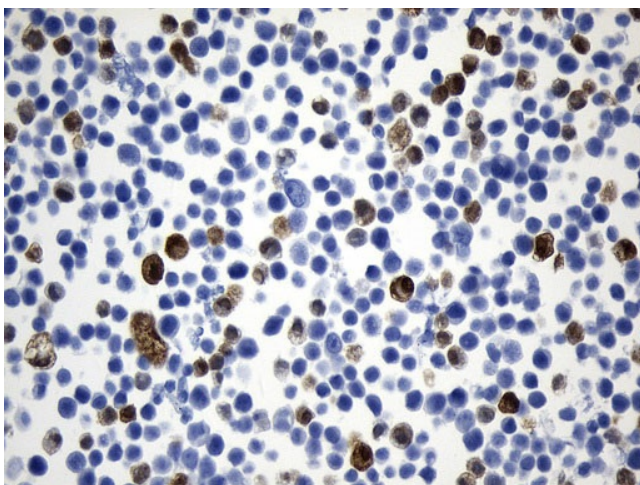
Immunohistochemical staining of paraffin-embedded Human colon tissue within the normal limits using anti-UCHL1 (PGP9.5) mouse monoclonal antibody. (Heat-induced epitope retrieval by 1mM EDTA in 10mM Tris buffer (pH8.5) at 120°C for 3min, UM800136) (1:600)



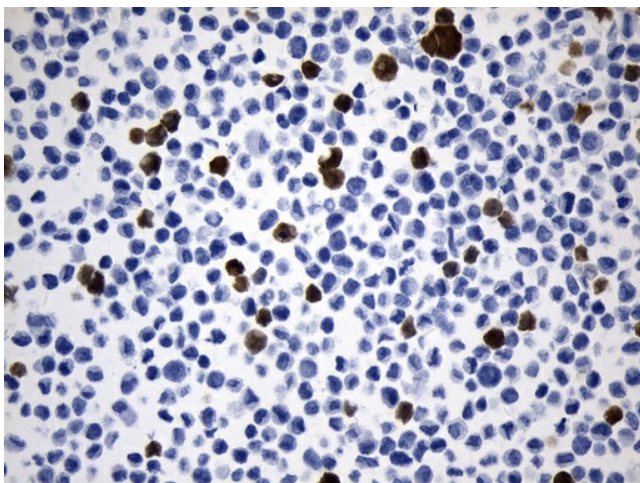
Immunohistochemical staining of paraffin-embedded Carcinoma of Human lung tissue using anti-UCHL1 (PGP9.5) mouse monoclonal antibody. (Heat-induced epitope retrieval by 1mM EDTA in 10mM Tris buffer (pH8.5) at 120°C for 3min, UM800136) (1:600)



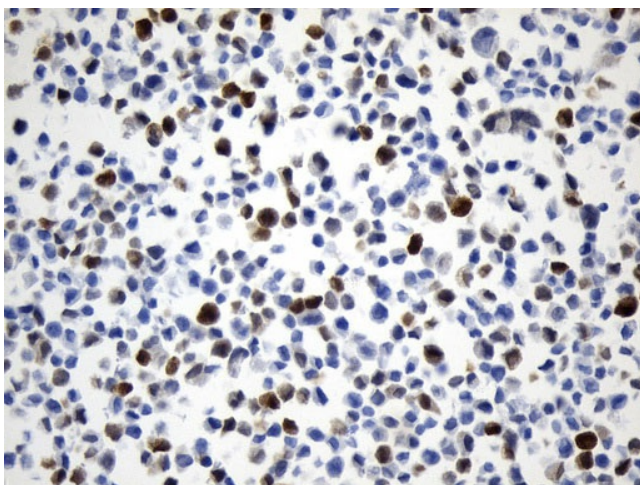
Immunohistochemical staining of paraffin-embedded Carcinoma of Human pancreas tissue using anti-UCHL1 (PGP9.5) mouse monoclonal antibody. (Heat-induced epitope retrieval by 1mM EDTA in 10mM Tris buffer (pH8.5) at 120°C for 3min, UM800136) (1:600)



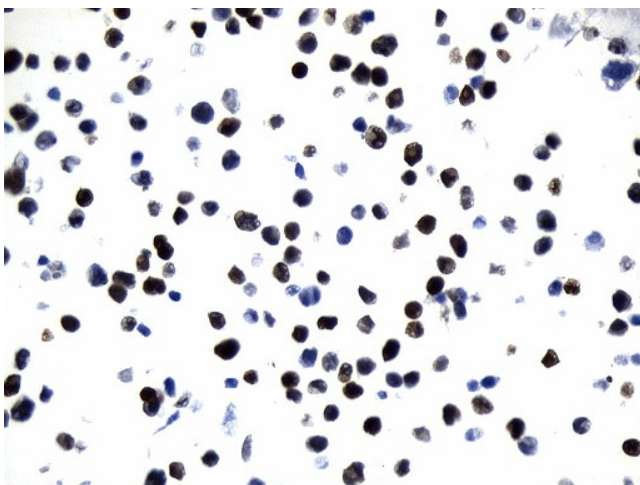
Immunohistochemical staining of paraffin-embedded MCF7 cell pellets using anti-UCHL1 (PGP9.5) mouse monoclonal antibody (Heat-induced epitope retrieval by 1mM EDTA in 10mM Tris buffer (pH8.0) at 120°C for 2.5 min, UM800136) (1:600)



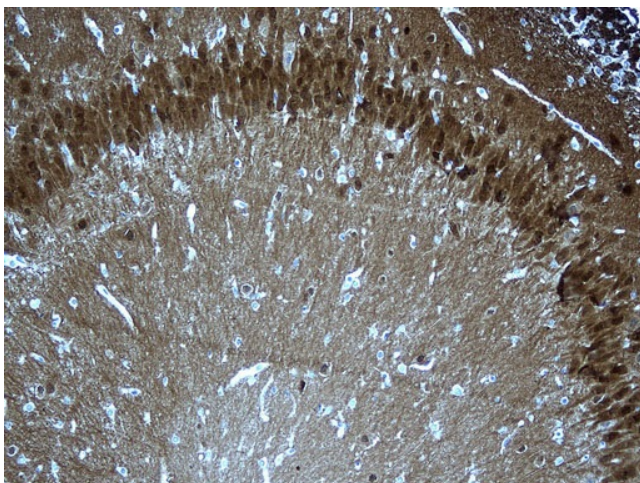
Immunohistochemical staining of paraffin-embedded NIH/3T3 cell pellets using anti-UCHL1 (PGP9.5) mouse monoclonal antibody (Heat-induced epitope retrieval by 1mM EDTA in 10mM Tris buffer (pH8.0) at 120°C for 2.5 min, UM800136) (1:600)



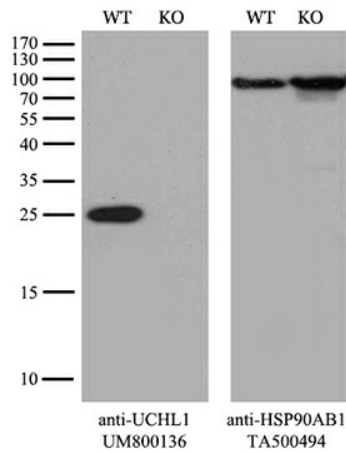
Immunohistochemical staining of paraffin-embedded COS-7 cell pellets using anti-UCHL1 (PGP9.5) mouse monoclonal antibody (Heat-induced epitope retrieval by 1mM EDTA in 10mM Tris buffer (pH8.0) at 120°C for 2.5 min, UM800136) (1:600)



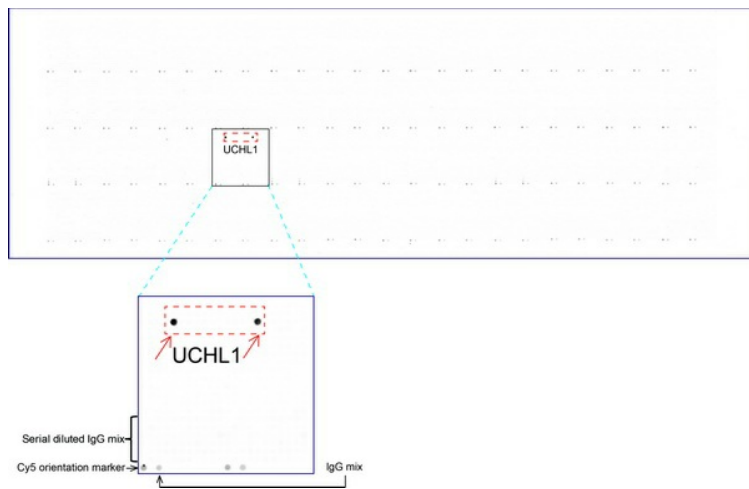
Immunohistochemical staining of paraffin-embedded Huh7 cell pellets using anti-UCHL1 (PGP9.5) mouse monoclonal antibody (Heat-induced epitope retrieval by 1mM EDTA in 10mM Tris buffer (pH8.0) at 120°C for 2.5 min, UM800136) (1:600)



Immunohistochemical staining of paraffin-embedded rat cerebrum tissue within the normal limits using anti-UCHL1 (PGP9.5) mouse monoclonal antibody. (Heat-induced epitope retrieval by 1mM EDTA in 10mM Tris buffer (pH8.5) at 120°C for 3min, UM800136) (1:150) (1:600)



Equivalent amounts of cell lysates (10 ug per lane) of wild-type 293T cells (WT, Cat# LC810293T) and UCHL1-Knockout 293T cells (KO, Cat# [LC810250]) were separated by SDS-PAGE and immunoblotted with anti-UCHL1 monoclonal antibody UM800136. Then the blotted membrane was stripped and reprobed with anti-HSP90AB1 antibody ([TA500494]) as a loading control (1:500).



OriGene overexpression protein microarray chip was immunostained with UltraMAB anti-UCHL1 (PGP9.5) mouse monoclonal antibody (UM800136). The positive reactive proteins are highlighted with two red arrows in the enlarged subarray. All the positive controls spotted in this subarray are also labeled for clarification (1:100).