

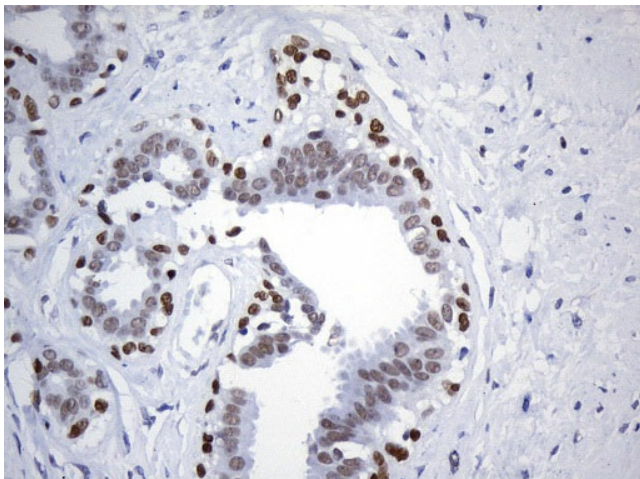
Product datasheet for **UM800134CF**

FOXP1 Mouse Monoclonal Antibody [Clone ID: UMAB242]

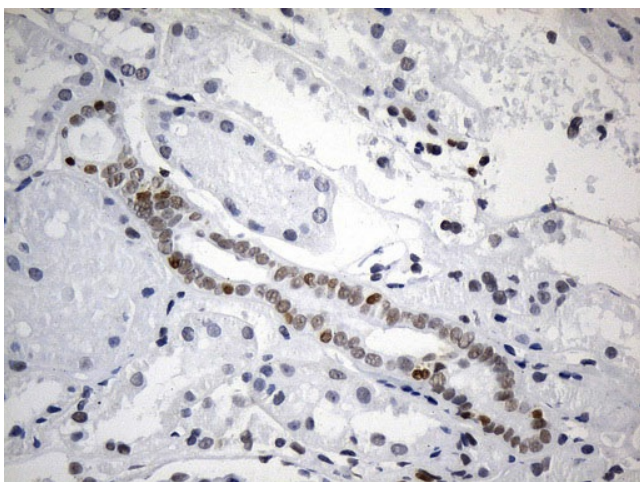
Product data:

Product Type:	Primary Antibodies
Clone Name:	UMAB242
Applications:	10k-ChIP, IHC
Recommended Dilution:	IHC 1:75~100
Reactivity:	Human
Host:	Mouse
Isotype:	IgG2b
Clonality:	Monoclonal
Immunogen:	Full length human recombinant protein of human FOXP1 (NP_116071) produced in SF9 cell.
Formulation:	Lyophilized powder (original buffer 1X PBS, pH 7.3, 8% trehalose)
Reconstitution Method:	For reconstitution, we recommend adding 100uL distilled water to a final antibody concentration of about 1 mg/mL. To use this carrier-free antibody for conjugation experiment, we strongly recommend performing another round of desalting process. (OriGene recommends Zeba Spin Desalting Columns, 7KMWCO from Thermo Scientific)
Purification:	Purified from mouse ascites fluids or tissue culture supernatant by affinity chromatography (protein A/G)
Conjugation:	Unconjugated
Storage:	Store at -20°C as received.
Stability:	Stable for 12 months from date of receipt.
Predicted Protein Size:	75.1 kDa
Gene Name:	forkhead box P1
Database Link:	NP_116071 Entrez Gene 27086 Human Q9H334
Synonyms:	12CC4; hFKH1B; HSPC215; MFH; QRF1
Protein Families:	Transcription Factors

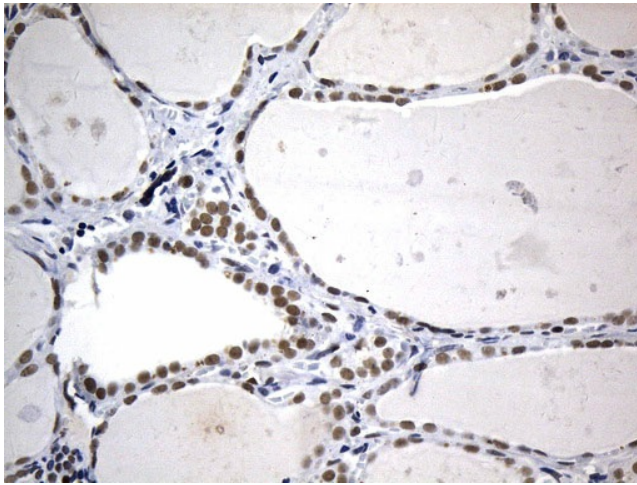
[View online »](#)

Product images:


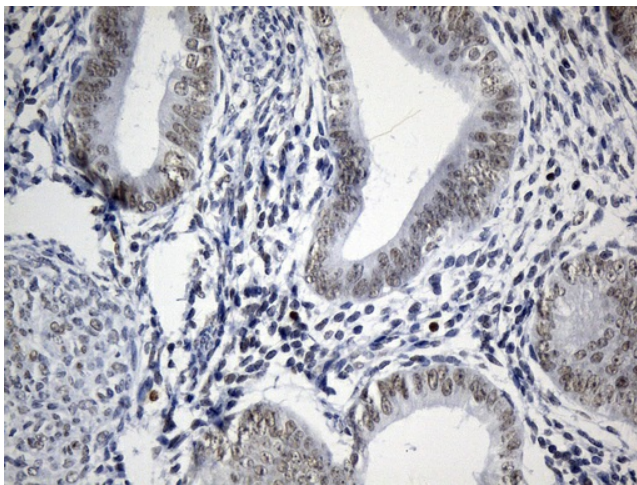
Immunohistochemical staining of paraffin-embedded Human breast tissue within the normal limits using anti-FOXP1 mouse monoclonal antibody. (Heat-induced epitope retrieval by 1mM EDTA in 10mM Tris buffer (pH8.5) at 120°C for 3min, [UM800134]) (1:75)



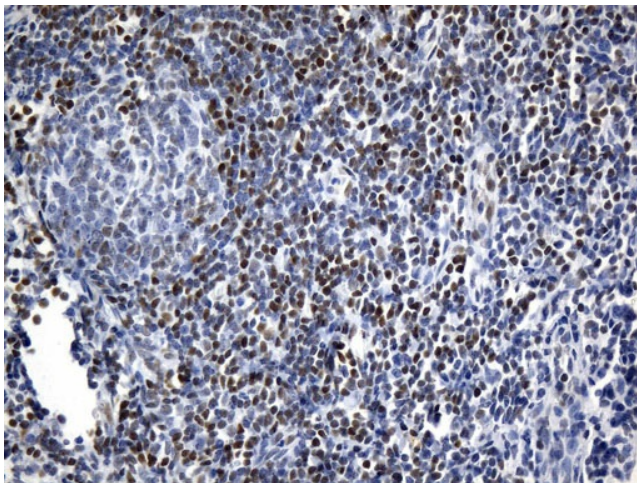
Immunohistochemical staining of paraffin-embedded Human Kidney tissue within the normal limits using anti-FOXP1 mouse monoclonal antibody. (Heat-induced epitope retrieval by 1mM EDTA in 10mM Tris buffer (pH8.5) at 120°C for 3min, [UM800134]) (1:75)



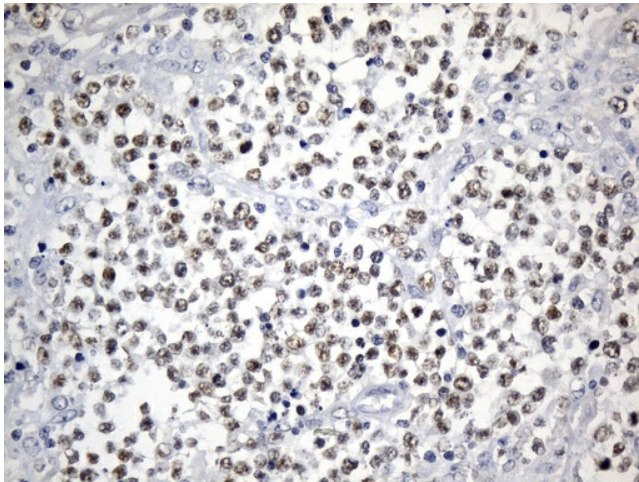
Immunohistochemical staining of paraffin-embedded Human thyroid tissue within the normal limits using anti-FOXP1 mouse monoclonal antibody. (Heat-induced epitope retrieval by 1mM EDTA in 10mM Tris buffer (pH8.5) at 120°C for 3min, [UM800134]) (1:75)



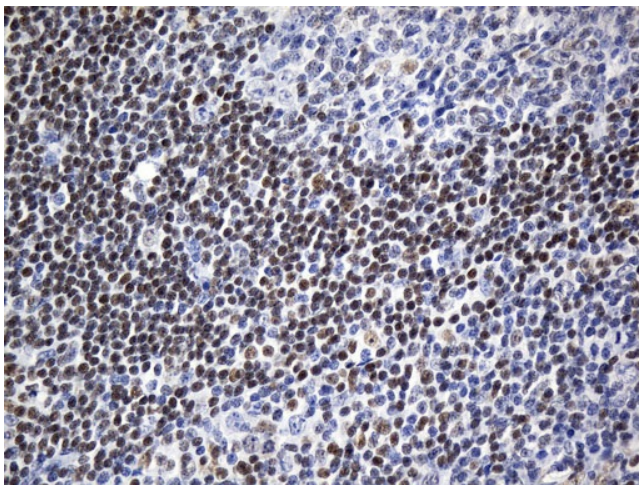
Immunohistochemical staining of paraffin-embedded Human endometrium tissue within the normal limits using anti-FOXP1 mouse monoclonal antibody. (Heat-induced epitope retrieval by 1mM EDTA in 10mM Tris buffer (pH8.5) at 120°C for 3min, [UM800134]) (1:75)



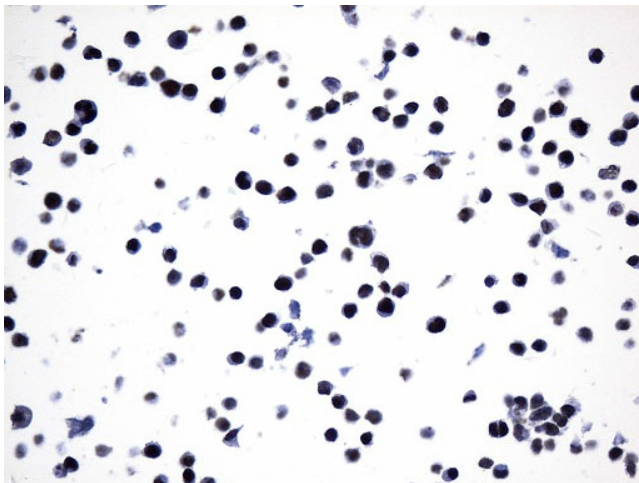
Immunohistochemical staining of paraffin-embedded Human lymph node tissue within the normal limits using anti-FOXP1 mouse monoclonal antibody. (Heat-induced epitope retrieval by 1mM EDTA in 10mM Tris buffer (pH8.5) at 120°C for 3min, [UM800134]) (1:75)



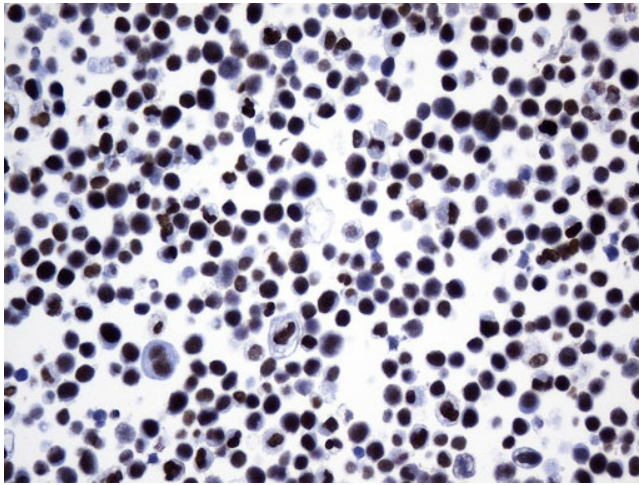
Immunohistochemical staining of paraffin-embedded Human lymphoma tissue using anti-FOXP1 mouse monoclonal antibody. (Heat-induced epitope retrieval by 1mM EDTA in 10mM Tris buffer (pH8.5) at 120°C for 3min, [UM800134]) (1:75)



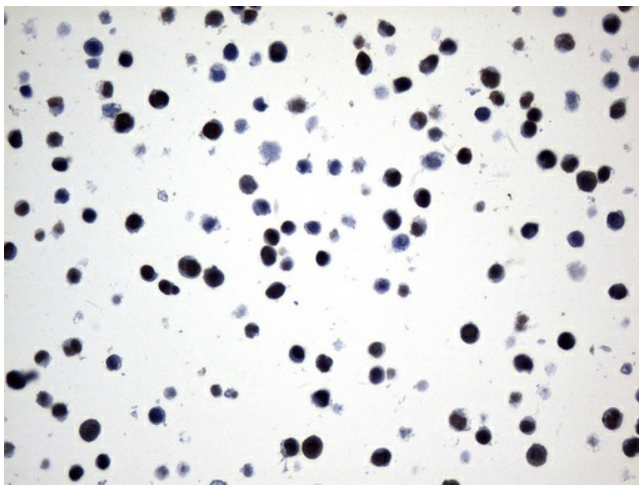
Immunohistochemical staining of paraffin-embedded Human tonsil within the normal limits using anti-FOXP1 mouse monoclonal antibody. (Heat-induced epitope retrieval by 1mM EDTA in 10mM Tris buffer (pH8.5) at 120°C for 3min, [UM800134]) (1:75)



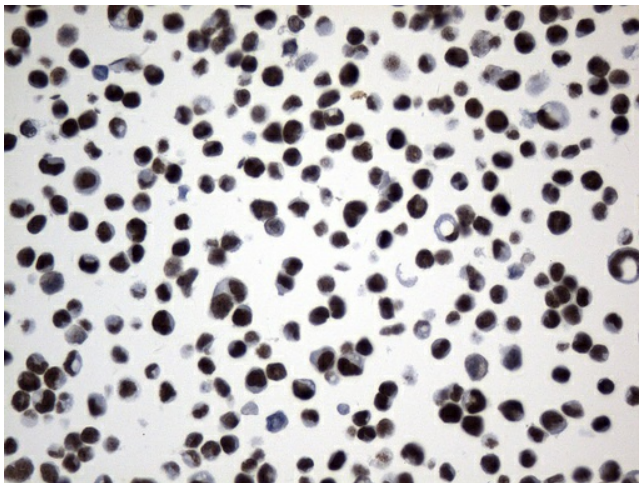
Immunohistochemical staining of paraffin-embedded 293T cell pellets using anti-FOXP1 mouse monoclonal antibody (Heat-induced epitope retrieval by 1mM EDTA in 10mM Tris buffer (pH8.0) at 120°C for 2.5 min, [UM800134]) (1:75)



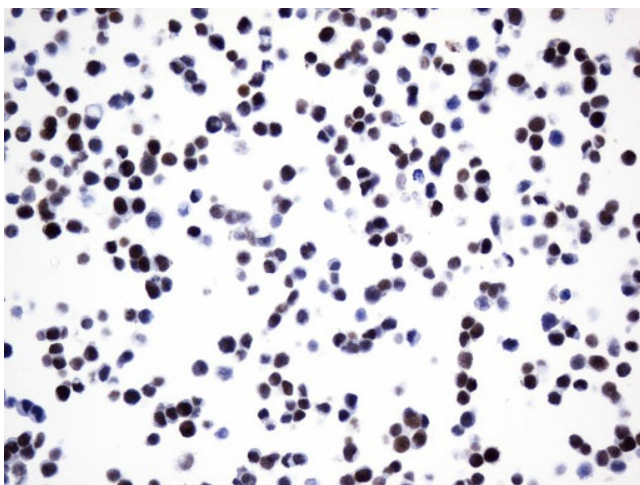
Immunohistochemical staining of paraffin-embedded MCF7 cell pellets using anti-FOXP1 mouse monoclonal antibody (Heat-induced epitope retrieval by 1mM EDTA in 10mM Tris buffer (pH8.0) at 120°C for 2.5 min, [UM800134]) (1:75)



Immunohistochemical staining of paraffin-embedded A375 cell pellets using anti-FOXP1 mouse monoclonal antibody (Heat-induced epitope retrieval by 1mM EDTA in 10mM Tris buffer (pH8.0) at 120°C for 2.5 min, [UM800134]) (1:75)



Immunohistochemical staining of paraffin-embedded MDA-MB-453 cell pellets using anti-FOXP1 mouse monoclonal antibody (Heat-induced epitope retrieval by 1mM EDTA in 10mM Tris buffer (pH8.0) at 120°C for 2.5 min, [UM800134]) (1:75)



Immunohistochemical staining of paraffin-embedded LoVo cell pellets using anti-FOXP1 mouse monoclonal antibody (Heat-induced epitope retrieval by 1mM EDTA in 10mM Tris buffer (pH8.0) at 120°C for 2.5 min, [UM800134]) (1:75)