

Product datasheet for **UM800130CF**

MCM2 Mouse Monoclonal Antibody [Clone ID: UMAB238]

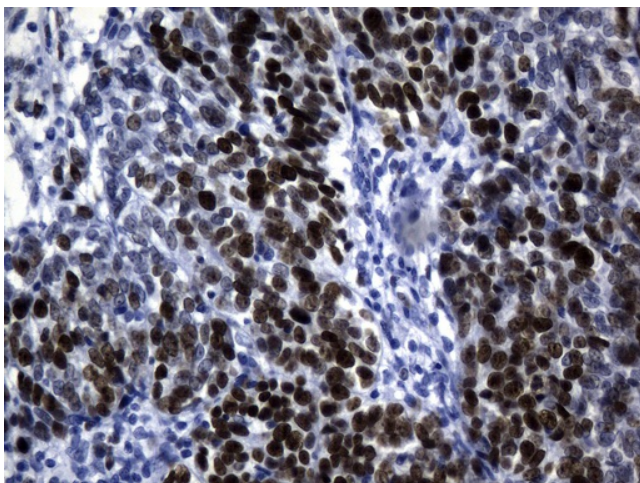
Product data:

Product Type:	Primary Antibodies
Clone Name:	UMAB238
Applications:	IHC, WB
Recommended Dilution:	WB 1:500, IHC 1:500
Reactivity:	Human, Mouse, Rat
Host:	Mouse
Isotype:	IgG2b
Clonality:	Monoclonal
Immunogen:	Full length human recombinant protein of human MCM2 (NP_004517) produced in HEK293T cell.
Formulation:	Lyophilized powder (original buffer 1X PBS, pH 7.3, 8% trehalose)
Reconstitution Method:	For reconstitution, we recommend adding 100uL distilled water to a final antibody concentration of about 1 mg/mL. To use this carrier-free antibody for conjugation experiment, we strongly recommend performing another round of desalting process. (OriGene recommends Zeba Spin Desalting Columns, 7KMWCO from Thermo Scientific)
Purification:	Purified from mouse ascites fluids or tissue culture supernatant by affinity chromatography (protein A/G)
Conjugation:	Unconjugated
Storage:	Store at -20°C as received.
Stability:	Stable for 12 months from date of receipt.
Predicted Protein Size:	101.7 kDa
Gene Name:	minichromosome maintenance complex component 2
Database Link:	NP_004517 Entrez Gene 17216 Mouse Entrez Gene 312538 Rat Entrez Gene 4171 Human P49736
Synonyms:	BM28; CCNL1; cdc19; CDCL1; D3S3194; MITOTIN
Protein Families:	Druggable Genome, Stem cell - Pluripotency, Transcription Factors

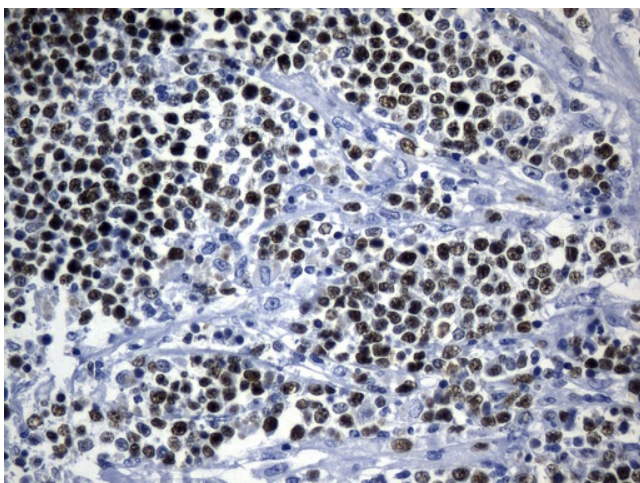
[View online »](#)

Protein Pathways: Cell cycle, DNA replication

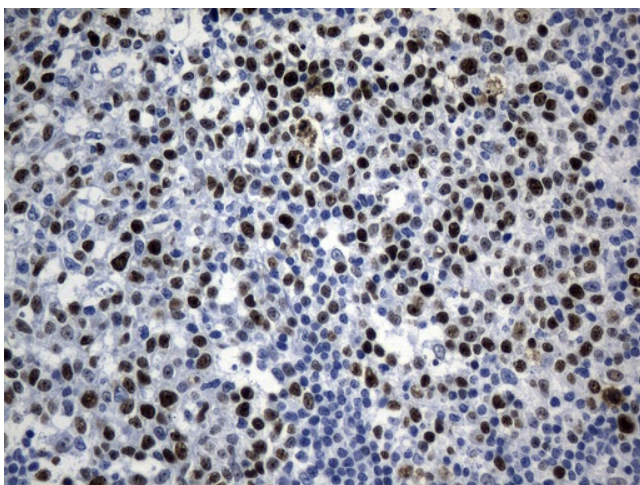
Product images:



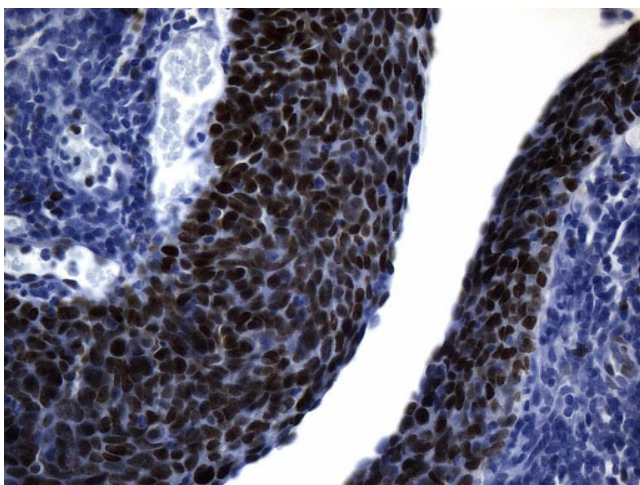
Immunohistochemical staining of paraffin-embedded Adenocarcinoma of Human ovary tissue using anti-MCM2 mouse monoclonal antibody. (Heat-induced epitope retrieval by 1mM EDTA in 10mM Tris buffer (pH8.0) at 120°C for 2.5 min, [UM800130]) (1:500)



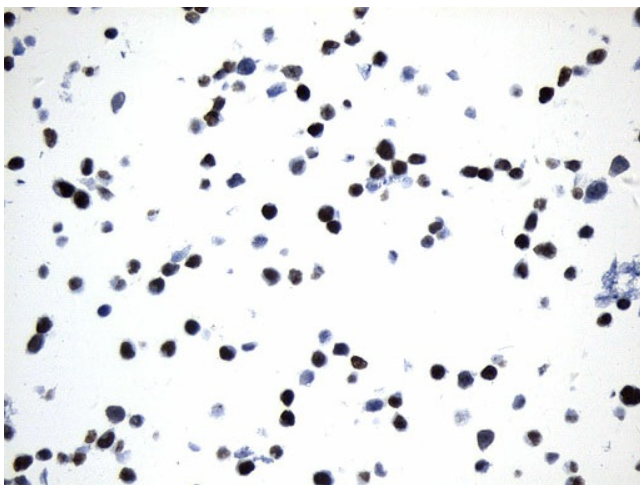
Immunohistochemical staining of paraffin-embedded Human lymphoma tissue using anti-MCM2 mouse monoclonal antibody. (Heat-induced epitope retrieval by 1mM EDTA in 10mM Tris buffer (pH8.0) at 120°C for 2.5 min, [UM800130]) (1:500)



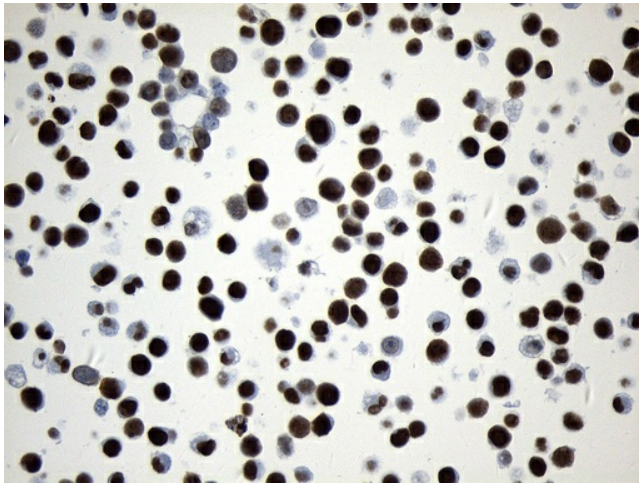
Immunohistochemical staining of paraffin-embedded Human tonsil within the normal limits using anti-MCM2 mouse monoclonal antibody. (Heat-induced epitope retrieval by 1mM EDTA in 10mM Tris buffer (pH8.0) at 120°C for 2.5 min, [UM800130]) (1:500)



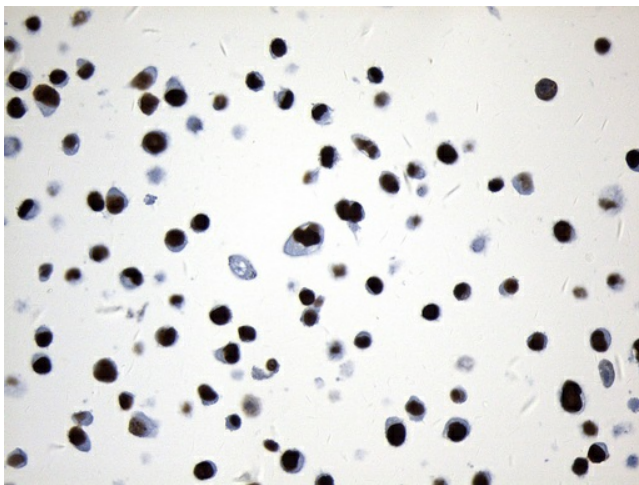
Immunohistochemical staining of paraffin-embedded Carcinoma of Human Cervix Uterus using anti-MCM2 mouse monoclonal antibody. (Heat-induced epitope retrieval by 1mM EDTA in 10mM Tris buffer (pH8.0) at 120°C for 2.5 min, [UM800130]) (1:500)



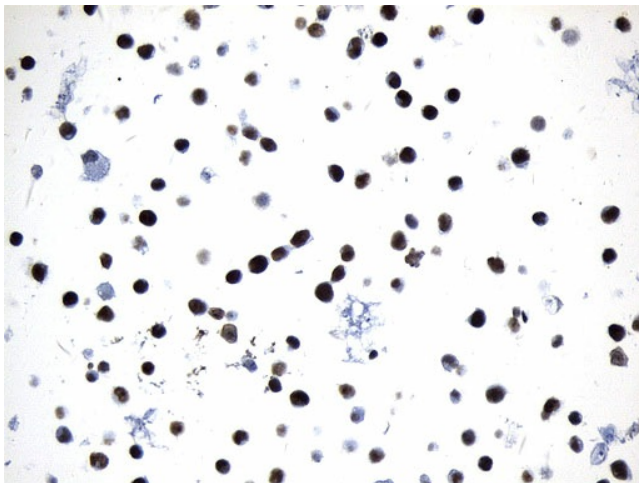
Immunohistochemical staining of paraffin-embedded 293T cell pellets using anti-MCM2 mouse monoclonal antibody (Heat-induced epitope retrieval by 1mM EDTA in 10mM Tris buffer (pH8.0) at 120°C for 2.5 min, [UM800130]) (1:150) (1:500)



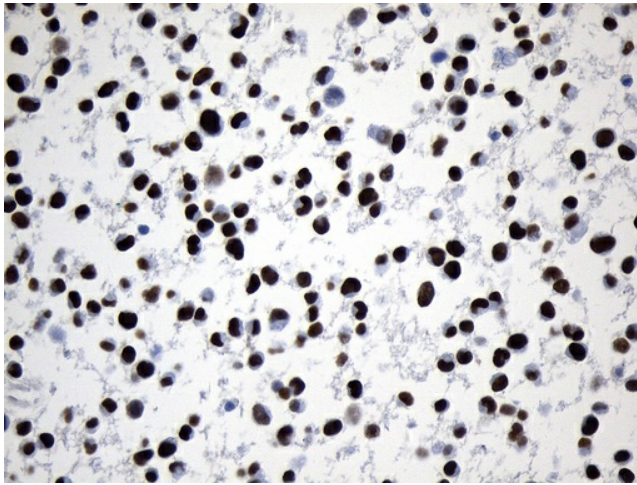
Immunohistochemical staining of paraffin-embedded MCF7 cell pellets using anti-MCM2 mouse monoclonal antibody (Heat-induced epitope retrieval by 1mM EDTA in 10mM Tris buffer (pH8.0) at 120°C for 2.5 min, [UM800130]) (1:500)



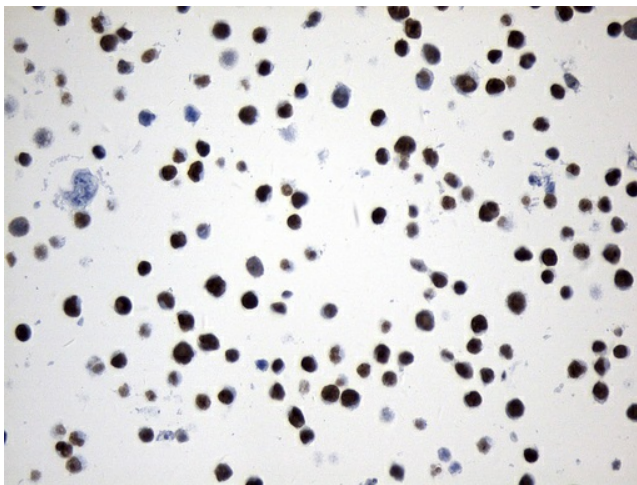
Immunohistochemical staining of paraffin-embedded HeLa cell pellets using anti-MCM2 mouse monoclonal antibody (Heat-induced epitope retrieval by 1mM EDTA in 10mM Tris buffer (pH8.0) at 120°C for 2.5 min, [UM800130]) (1:500)



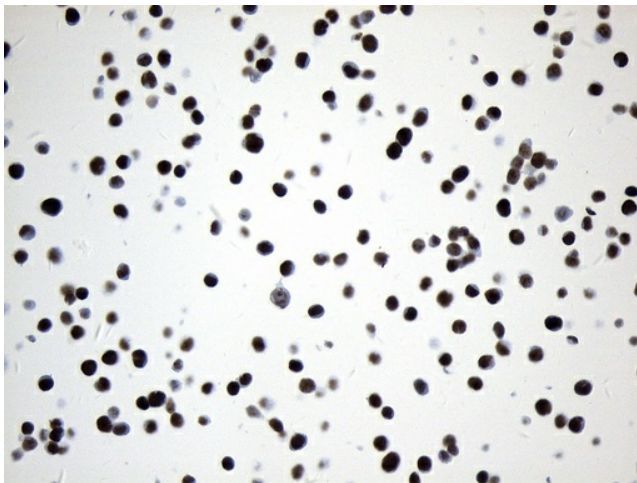
Immunohistochemical staining of paraffin-embedded A549 cell pellets using anti-MCM2 mouse monoclonal antibody (Heat-induced epitope retrieval by 1mM EDTA in 10mM Tris buffer (pH8.0) at 120°C for 2.5 min, [UM800130]) (1:500)



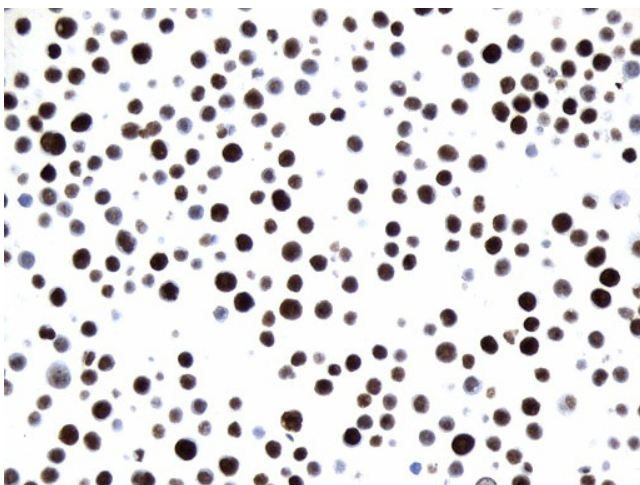
Immunohistochemical staining of paraffin-embedded NCI-H1975 cell pellets using anti-MCM2 mouse monoclonal antibody (Heat-induced epitope retrieval by 1mM EDTA in 10mM Tris buffer (pH8.0) at 120°C for 2.5 min, [UM800130]) (1:500)



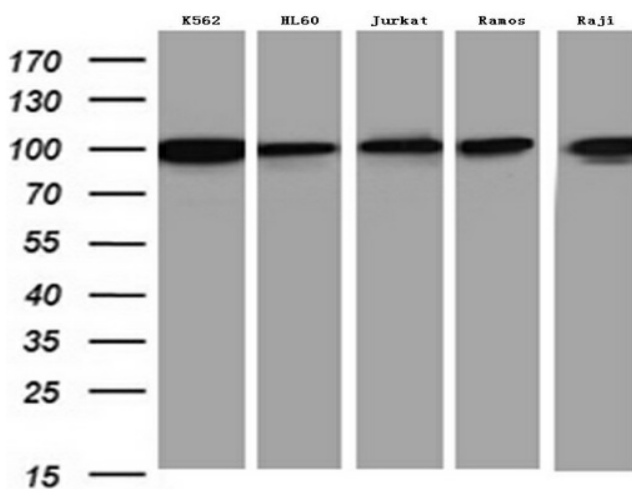
Immunohistochemical staining of paraffin-embedded A375 cell pellets using anti-MCM2 mouse monoclonal antibody (Heat-induced epitope retrieval by 1mM EDTA in 10mM Tris buffer (pH8.0) at 120°C for 2.5 min, [UM800130]) (1:500)



Immunohistochemical staining of paraffin-embedded HCT 116 cell pellets using anti-MCM2 mouse monoclonal antibody (Heat-induced epitope retrieval by 1mM EDTA in 10mM Tris buffer (pH8.0) at 120°C for 2.5 min, [UM800130]) (1:500)



Immunohistochemical staining of paraffin-embedded HT-29 cell pellets using anti-MCM2 mouse monoclonal antibody (Heat-induced epitope retrieval by 1mM EDTA in 10mM Tris buffer (pH8.0) at 120°C for 2.5 min, [UM800130]) (1:500)



Western blot analysis of extracts (35ug) from 5 different cancer cell lines by using anti-MCM2 monoclonal antibody (1:500).