

Product datasheet for **UM800130**

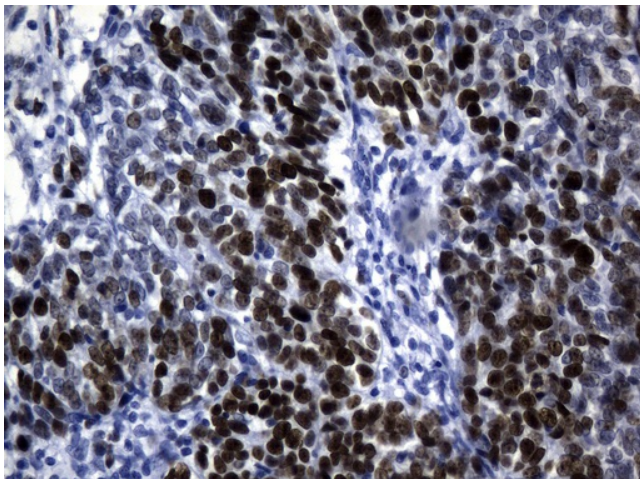
MCM2 Mouse Monoclonal Antibody [Clone ID: UMAB238]

Product data:

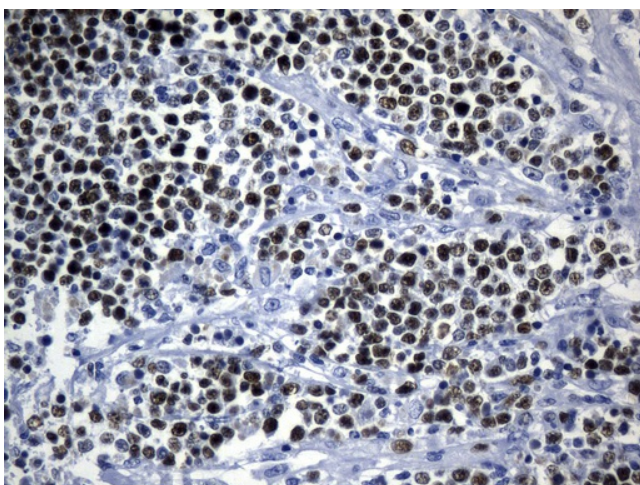
| | |
|-------------------------|--|
| Product Type: | Primary Antibodies |
| Clone Name: | UMAB238 |
| Applications: | IHC, WB |
| Recommended Dilution: | WB 1:500, IHC 1:500 |
| Reactivity: | Human, Mouse, Rat |
| Host: | Mouse |
| Isotype: | IgG2b |
| Clonality: | Monoclonal |
| Immunogen: | Full length human recombinant protein of human MCM2 (NP_004517) produced in HEK293T cell. |
| Formulation: | PBS (pH 7.3) containing 1% BSA, 50% glycerol and 0.02% sodium azide. |
| Concentration: | 0.5~1.0 mg/ml (Lot Dependent) |
| Purification: | Purified from mouse ascites fluids or tissue culture supernatant by affinity chromatography (protein A/G) |
| Conjugation: | Unconjugated |
| Storage: | Store at -20°C as received. |
| Stability: | Stable for 12 months from date of receipt. |
| Predicted Protein Size: | 101.7 kDa |
| Gene Name: | minichromosome maintenance complex component 2 |
| Database Link: | NP_004517 Entrez Gene 17216 Mouse Entrez Gene 312538 Rat Entrez Gene 4171 Human P49736 |
| Synonyms: | BM28; CCNL1; cdc19; CDCL1; D3S3194; MITOTIN |
| Protein Families: | Druggable Genome, Stem cell - Pluripotency, Transcription Factors |
| Protein Pathways: | Cell cycle, DNA replication |



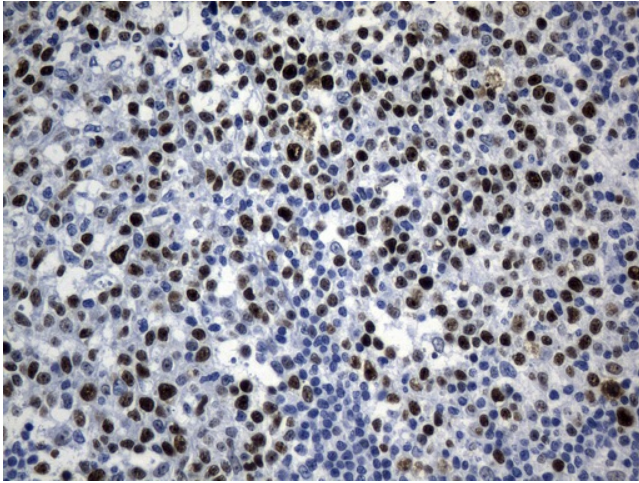
[View online »](#)

Product images:

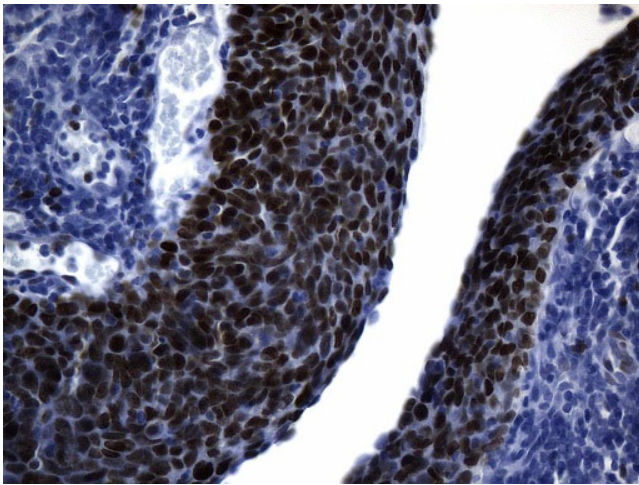
Immunohistochemical staining of paraffin-embedded Adenocarcinoma of Human ovary tissue using anti-MCM2 mouse monoclonal antibody. (Heat-induced epitope retrieval by 1mM EDTA in 10mM Tris buffer (pH8.0) at 120°C for 2.5 min, UM800130) (1:500)



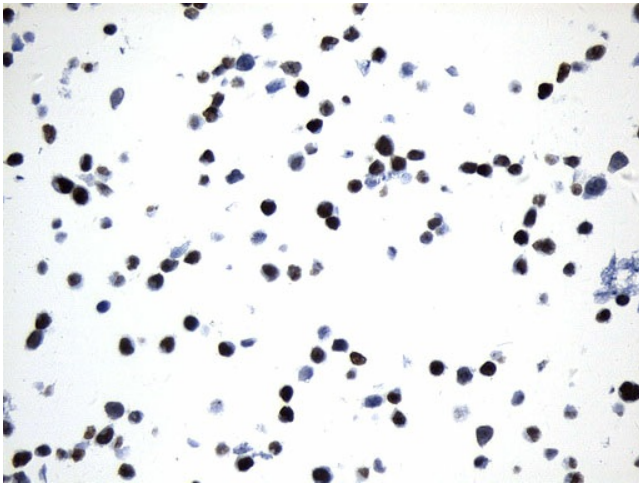
Immunohistochemical staining of paraffin-embedded Human lymphoma tissue using anti-MCM2 mouse monoclonal antibody. (Heat-induced epitope retrieval by 1mM EDTA in 10mM Tris buffer (pH8.0) at 120°C for 2.5 min, UM800130) (1:500)



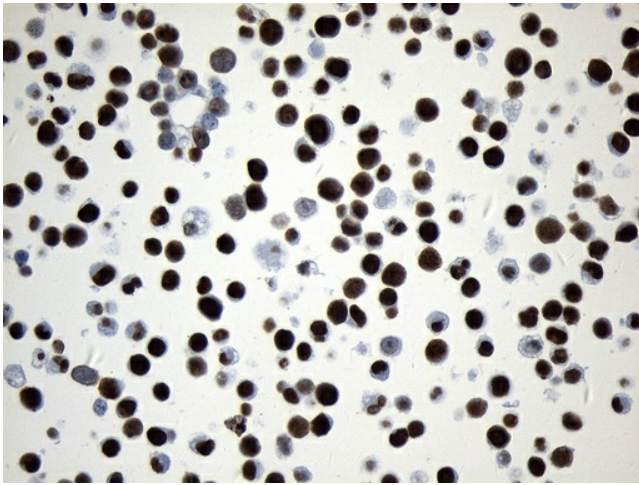
Immunohistochemical staining of paraffin-embedded Human tonsil within the normal limits using anti-MCM2 mouse monoclonal antibody. (Heat-induced epitope retrieval by 1mM EDTA in 10mM Tris buffer (pH8.0) at 120°C for 2.5 min, UM800130) (1:500)



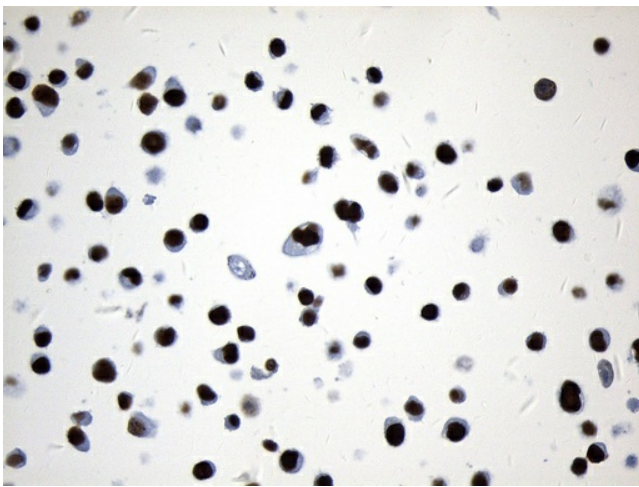
Immunohistochemical staining of paraffin-embedded Carcinoma of Human Cervix Uterus using anti-MCM2 mouse monoclonal antibody. (Heat-induced epitope retrieval by 1mM EDTA in 10mM Tris buffer (pH8.0) at 120°C for 2.5 min, UM800130) (1:500)



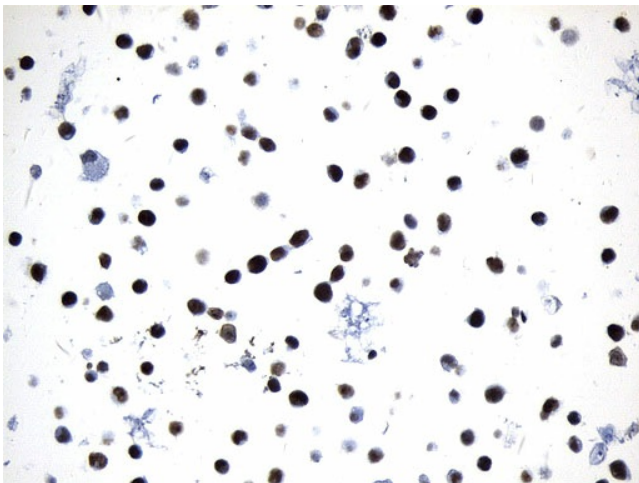
Immunohistochemical staining of paraffin-embedded 293T cell pellets using anti-MCM2 mouse monoclonal antibody (Heat-induced epitope retrieval by 1mM EDTA in 10mM Tris buffer (pH8.0) at 120°C for 2.5 min, UM800130) (1:150) (1:500)



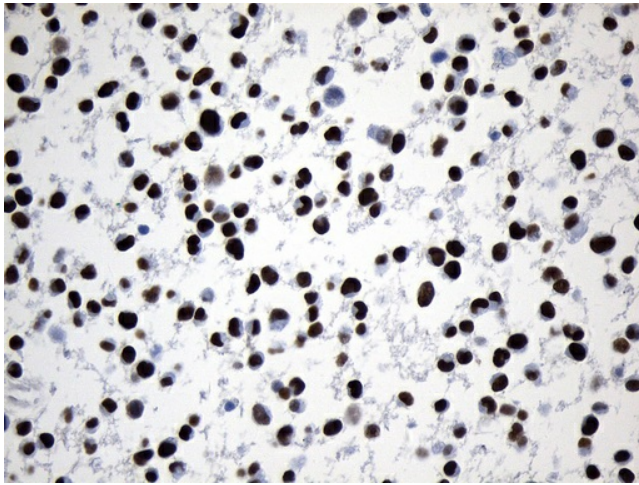
Immunohistochemical staining of paraffin-embedded MCF7 cell pellets using anti-MCM2 mouse monoclonal antibody (Heat-induced epitope retrieval by 1mM EDTA in 10mM Tris buffer (pH8.0) at 120°C for 2.5 min, UM800130) (1:500)



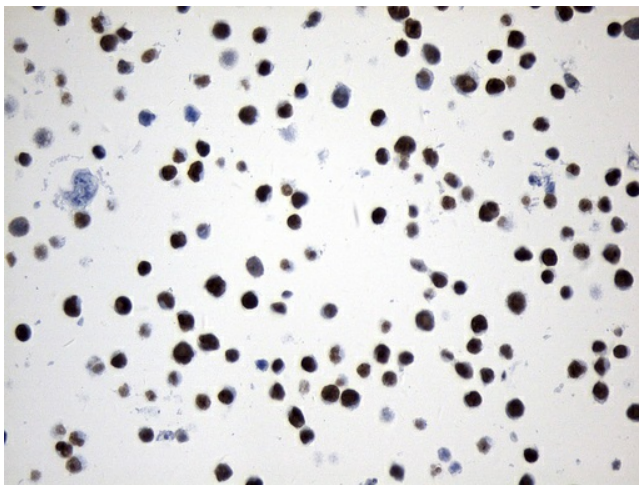
Immunohistochemical staining of paraffin-embedded HeLa cell pellets using anti-MCM2 mouse monoclonal antibody (Heat-induced epitope retrieval by 1mM EDTA in 10mM Tris buffer (pH8.0) at 120°C for 2.5 min, UM800130) (1:500)



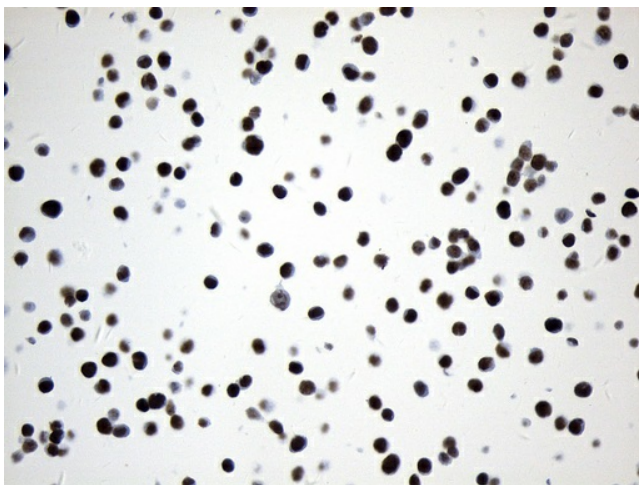
Immunohistochemical staining of paraffin-embedded A549 cell pellets using anti-MCM2 mouse monoclonal antibody (Heat-induced epitope retrieval by 1mM EDTA in 10mM Tris buffer (pH8.0) at 120°C for 2.5 min, UM800130) (1:500)



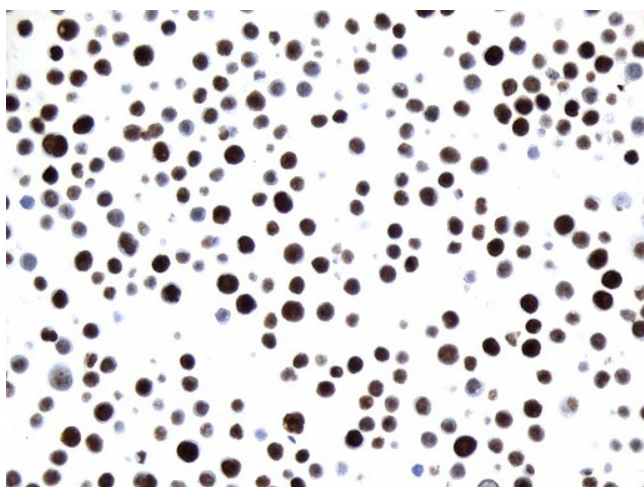
Immunohistochemical staining of paraffin-embedded NCI-H1975 cell pellets using anti-MCM2 mouse monoclonal antibody (Heat-induced epitope retrieval by 1mM EDTA in 10mM Tris buffer (pH8.0) at 120°C for 2.5 min, UM800130) (1:500)



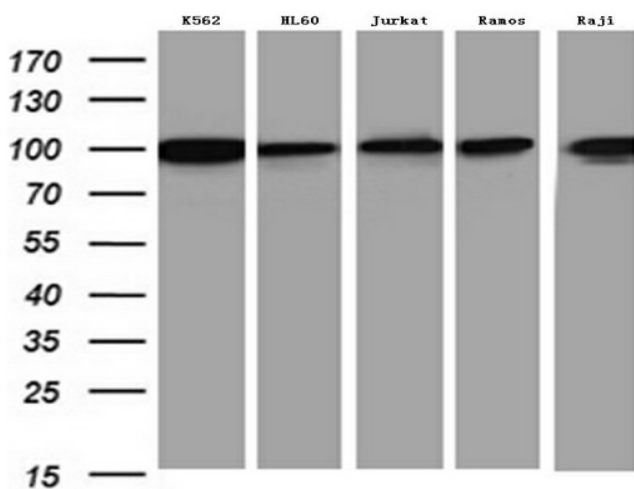
Immunohistochemical staining of paraffin-embedded A375 cell pellets using anti-MCM2 mouse monoclonal antibody (Heat-induced epitope retrieval by 1mM EDTA in 10mM Tris buffer (pH8.0) at 120°C for 2.5 min, UM800130) (1:500)



Immunohistochemical staining of paraffin-embedded HCT 116 cell pellets using anti-MCM2 mouse monoclonal antibody (Heat-induced epitope retrieval by 1mM EDTA in 10mM Tris buffer (pH8.0) at 120°C for 2.5 min, UM800130) (1:500)



Immunohistochemical staining of paraffin-embedded HT-29 cell pellets using anti-MCM2 mouse monoclonal antibody (Heat-induced epitope retrieval by 1mM EDTA in 10mM Tris buffer (pH8.0) at 120°C for 2.5 min, UM800130) (1:500)



Western blot analysis of extracts (35ug) from 5 different cancer cell lines by using anti-MCM2 monoclonal antibody (1:500).