

## Product datasheet for **UM800129CF**

### alpha smooth muscle Actin (ACTA2) Mouse Monoclonal Antibody [Clone ID: UMAB237]

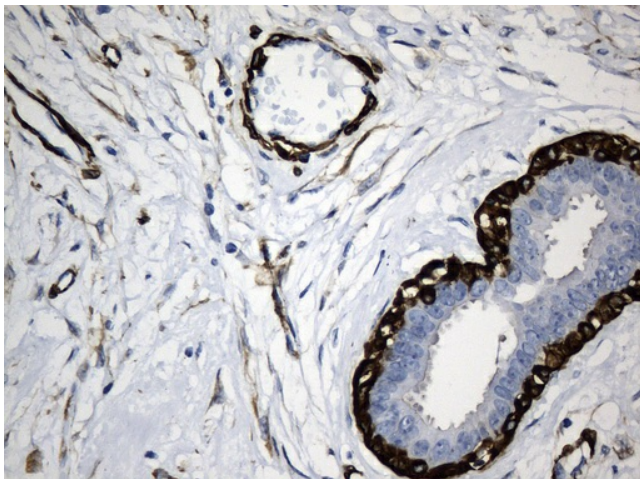
#### Product data:

Product Type:	Primary Antibodies
Clone Name:	UMAB237
Applications:	IHC
Recommended Dilution:	IHC 1:3200
Reactivity:	Human, Mouse, Rat
Host:	Mouse
Isotype:	IgG2a
Clonality:	Monoclonal
Immunogen:	Synthetic peptide corresponding to the N terminal of human alpha smooth muscle actin conjugated to KLH.
Formulation:	Lyophilized powder (original buffer 1X PBS, pH 7.3, 8% trehalose)
Reconstitution Method:	For reconstitution, we recommend adding 100uL distilled water to a final antibody concentration of about 1 mg/mL. To use this carrier-free antibody for conjugation experiment, we strongly recommend performing another round of desalting process. (OriGene recommends Zeba Spin Desalting Columns, 7KMWCO from Thermo Scientific)
Purification:	Purified from mouse ascites fluids or tissue culture supernatant by affinity chromatography (protein A/G)
Conjugation:	Unconjugated
Storage:	Store at -20°C as received.
Stability:	Stable for 12 months from date of receipt.
Predicted Protein Size:	41.8 kDa
Gene Name:	actin alpha 2, smooth muscle
Database Link:	<a href="#">NP_001604</a> <a href="#">Entrez Gene 11475 Mouse</a> <a href="#">Entrez Gene 81633 Rat</a> <a href="#">Entrez Gene 59 Human</a> <a href="#">P62736</a>
Synonyms:	AAT6; ACTSA; MYMY5
Protein Pathways:	Vascular smooth muscle contraction

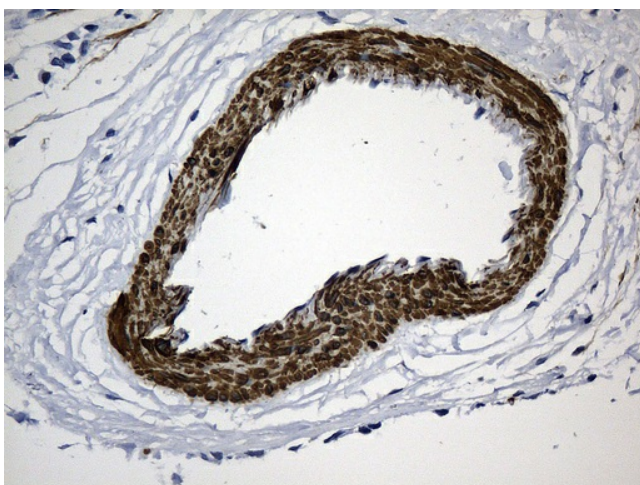


[View online »](#)

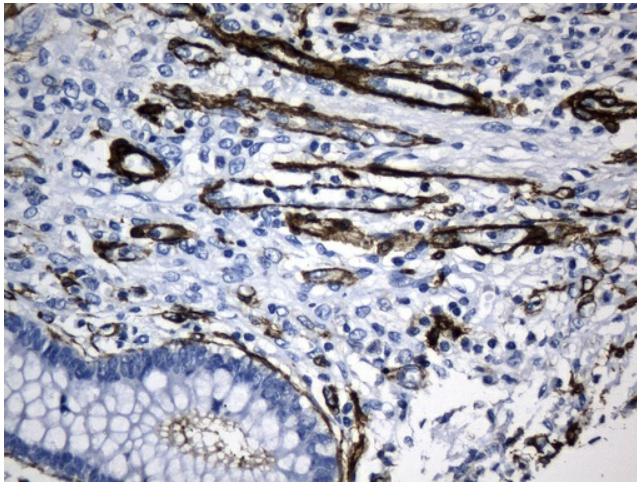
## Product images:



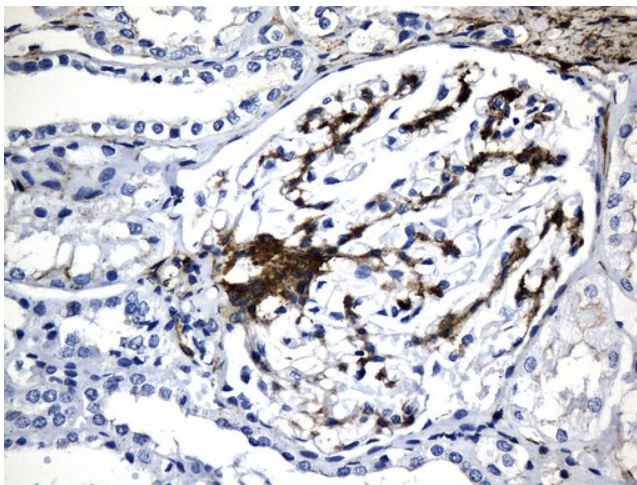
Immunohistochemical staining of paraffin-embedded Human breast tissue within the normal limits using anti-ACTA2 (smooth muscle actin alpha, SMA) mouse monoclonal antibody. (Heat-induced epitope retrieval by 1mM EDTA in 10mM Tris buffer (pH8.5) at 120°C for 3min, [UM800129]) (1:3200)



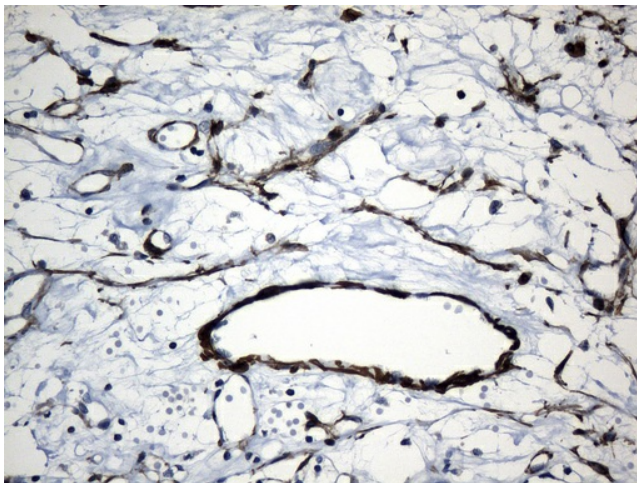
Immunohistochemical staining of paraffin-embedded Adenocarcinoma of Human breast tissue using anti-ACTA2 (smooth muscle actin alpha, SMA) mouse monoclonal antibody. (Heat-induced epitope retrieval by 1mM EDTA in 10mM Tris buffer (pH8.5) at 120°C for 3min, [UM800129]) (1:3200)



Immunohistochemical staining of paraffin-embedded Human colon tissue within the normal limits using anti-ACTA2 (smooth muscle actin alpha, SMA) mouse monoclonal antibody. (Heat-induced epitope retrieval by 1mM EDTA in 10mM Tris buffer (pH8.5) at 120°C for 3min, [UM800129]) (1:3200)

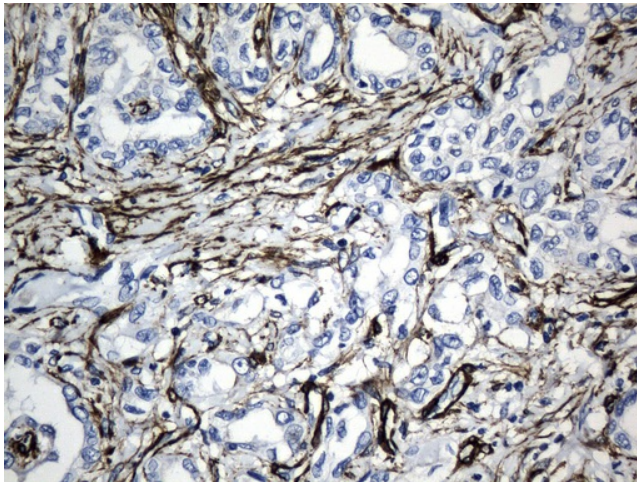


Immunohistochemical staining of paraffin-embedded Human Kidney tissue within the normal limits using anti-ACTA2 (smooth muscle actin alpha, SMA) mouse monoclonal antibody. (Heat-induced epitope retrieval by 1mM EDTA in 10mM Tris buffer (pH8.5) at 120°C for 3min, [UM800129]) (1:3200)

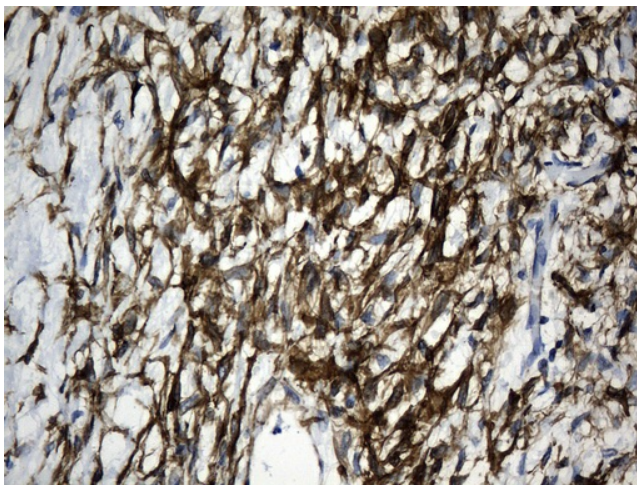


Immunohistochemical staining of paraffin-embedded Carcinoma of Human kidney tissue using anti-ACTA2 (smooth muscle actin alpha, SMA) mouse monoclonal antibody. (Heat-induced epitope retrieval by 1mM EDTA in 10mM Tris buffer (pH8.5) at 120°C for 3min, [UM800129]) (1:3200)

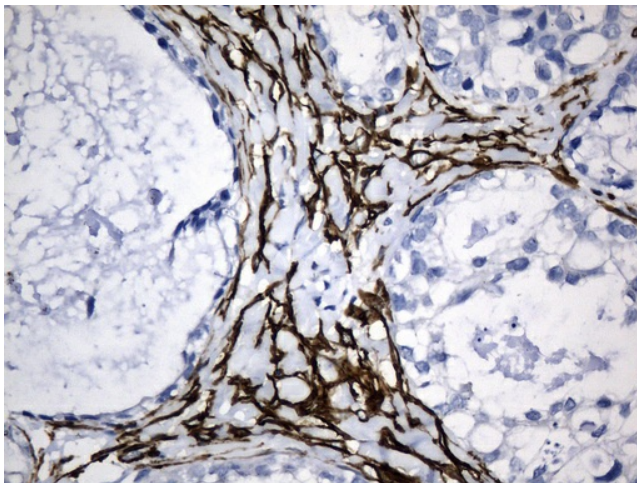




Immunohistochemical staining of paraffin-embedded Carcinoma of Human liver tissue using anti-ACTA2 (smooth muscle actin alpha, SMA) mouse monoclonal antibody. (Heat-induced epitope retrieval by 1mM EDTA in 10mM Tris buffer (pH8.5) at 120°C for 3min, [UM800129]) (1:3200)

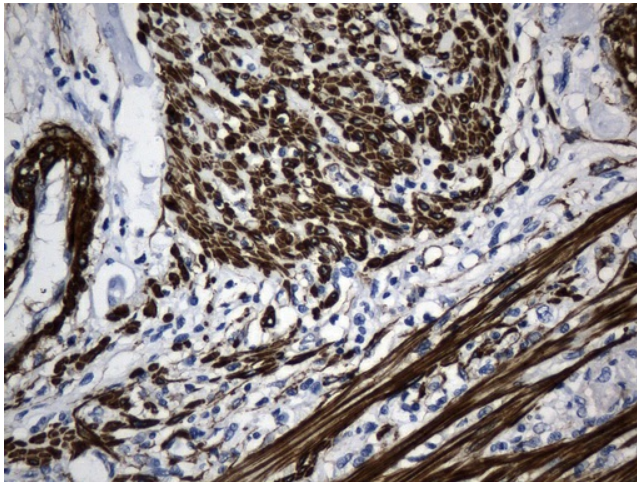


Immunohistochemical staining of paraffin-embedded Human Ovary tissue within the normal limits using anti-ACTA2 (smooth muscle actin alpha, SMA) mouse monoclonal antibody. (Heat-induced epitope retrieval by 1mM EDTA in 10mM Tris buffer (pH8.5) at 120°C for 3min, [UM800129]) (1:3200)

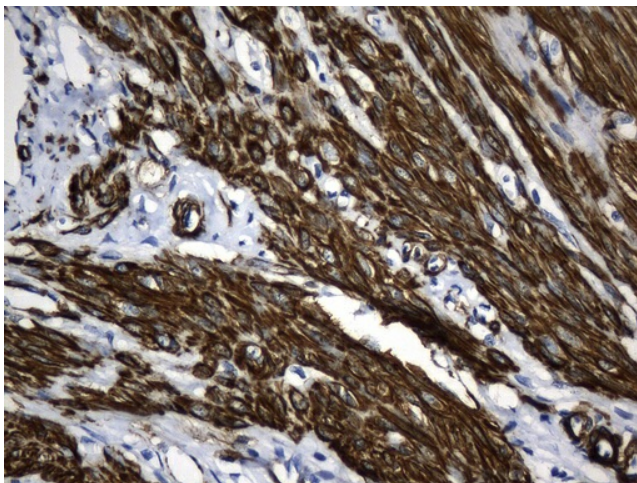


Immunohistochemical staining of paraffin-embedded Adenocarcinoma of Human ovary tissue using anti-ACTA2 (smooth muscle actin alpha, SMA) mouse monoclonal antibody. (Heat-induced epitope retrieval by 1mM EDTA in 10mM Tris buffer (pH8.5) at 120°C for 3min, [UM800129]) (1:3200)

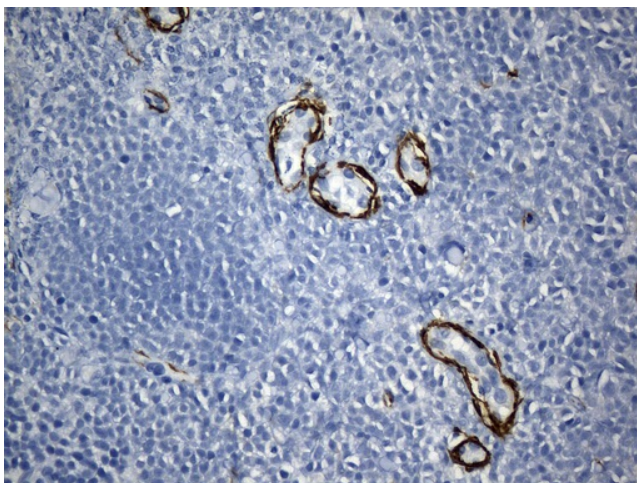




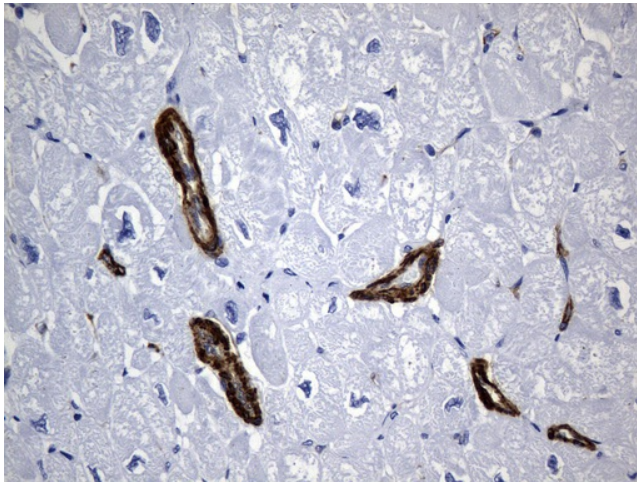
Immunohistochemical staining of paraffin-embedded Carcinoma of Human pancreas tissue using anti-ACTA2 (smooth muscle actin alpha, SMA) mouse monoclonal antibody. (Heat-induced epitope retrieval by 1mM EDTA in 10mM Tris buffer (pH8.5) at 120°C for 3min, [UM800129]) (1:3200)



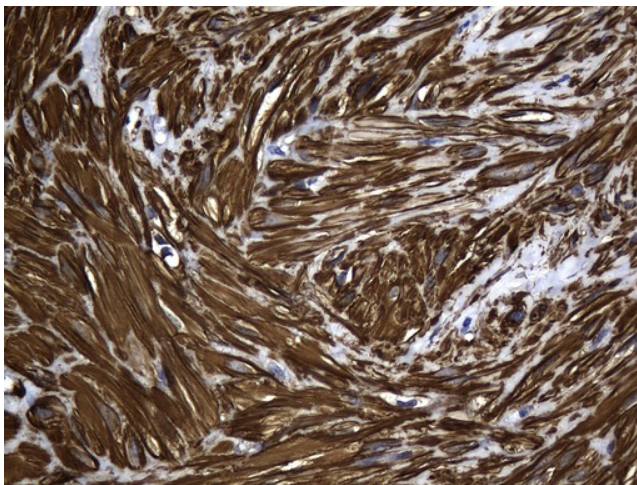
Immunohistochemical staining of paraffin-embedded Human endometrium tissue within the normal limits using anti-ACTA2 (smooth muscle actin alpha, SMA) mouse monoclonal antibody. (Heat-induced epitope retrieval by 1mM EDTA in 10mM Tris buffer (pH8.5) at 120°C for 3min, [UM800129]) (1:3200)



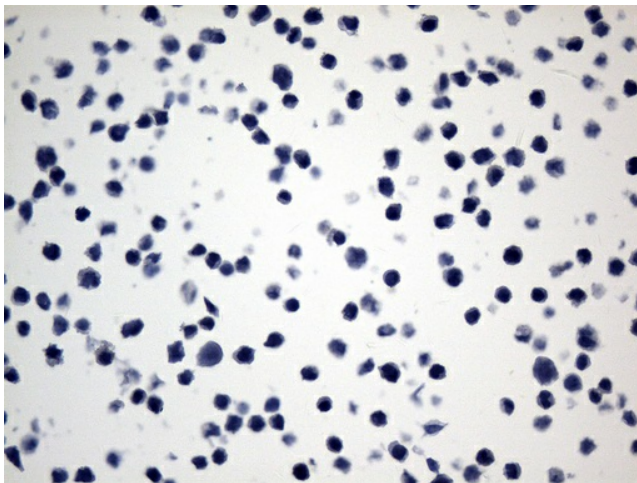
Immunohistochemical staining of paraffin-embedded Human lymph node tissue within the normal limits using anti-ACTA2 (smooth muscle actin alpha, SMA) mouse monoclonal antibody. (Heat-induced epitope retrieval by 1mM EDTA in 10mM Tris buffer (pH8.5) at 120°C for 3min, [UM800129]) (1:3200)



Immunohistochemical staining of paraffin-embedded Human uterine smooth muscle tissue using anti-ACTA2 (smooth muscle actin alpha, SMA) mouse monoclonal antibody. (Heat-induced epitope retrieval by 1mM EDTA in 10mM Tris buffer (pH8.5) at 120°C for 3min, [UM800129]) (1:3200)

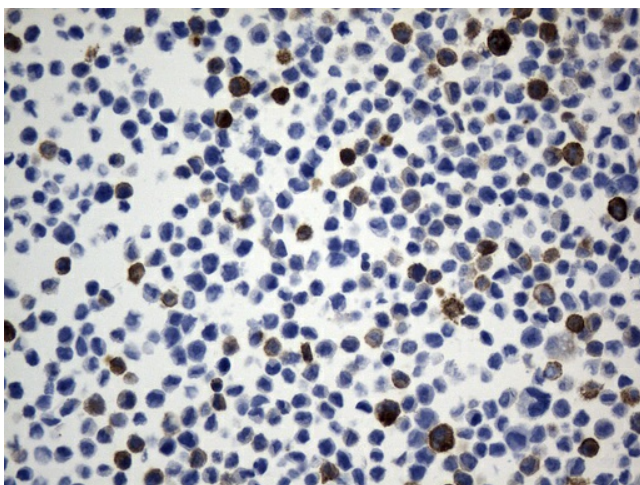


Immunohistochemical staining of paraffin-embedded Human uterine leiomyoma tissue using anti-ACTA2 (smooth muscle actin alpha, SMA) mouse monoclonal antibody. (Heat-induced epitope retrieval by 1mM EDTA in 10mM Tris buffer (pH8.5) at 120°C for 3min, [UM800129]) (1:3200).



Immunohistochemical staining of paraffin-embedded A-431 cell pellets using anti-ACTA2 (smooth muscle actin alpha, SMA) mouse monoclonal antibody (Heat-induced epitope retrieval by 1mM EDTA in 10mM Tris buffer (pH8.0) at 120°C for 2.5 min, [UM800129]) (1:3200)





Immunohistochemical staining of paraffin-embedded NIH/3T3 cell pellets using anti-ACTA2 (smooth muscle actin alpha, SMA) mouse monoclonal antibody (Heat-induced epitope retrieval by 1mM EDTA in 10mM Tris buffer (pH8.0) at 120°C for 2.5 min, [UM800129]) (1:3200)