

Product datasheet for **UM800128**

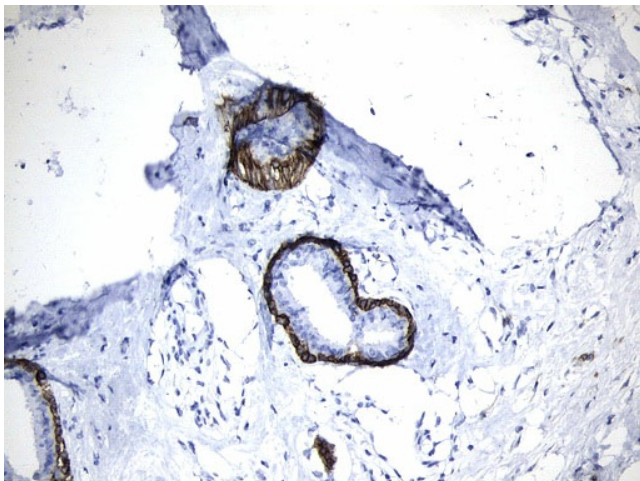
CD10 (MME) Mouse Monoclonal Antibody [Clone ID: UMAB236]

Product data:

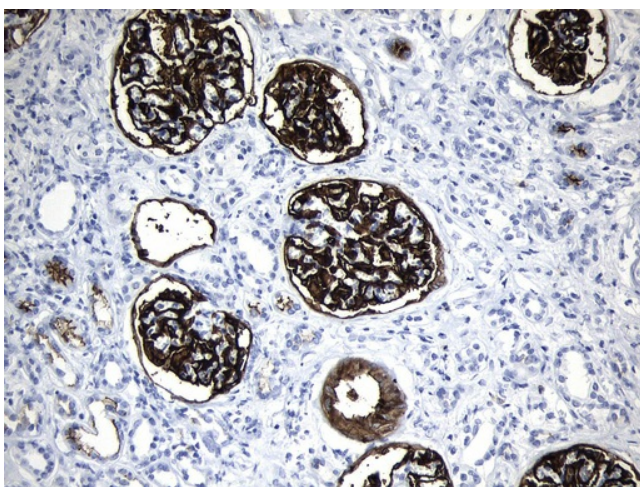
Product Type:	Primary Antibodies
Clone Name:	UMAB236
Applications:	10k-ChIP, FC, IHC, WB
Recommended Dilution:	WB 1:500, IHC 1:100~600
Reactivity:	Human, Mouse, Rat
Host:	Mouse
Isotype:	IgG1
Clonality:	Monoclonal
Immunogen:	Human recombinant protein fragment corresponding to amino acids 411-750 of human MME (CD10) (NP_009219) produced in E.coli.
Formulation:	PBS (pH 7.3) containing 1% BSA, 50% glycerol and 0.02% sodium azide.
Concentration:	0.5~1.0 mg/ml (Lot Dependent)
Purification:	Purified from mouse ascites fluids or tissue culture supernatant by affinity chromatography (protein A/G)
Conjugation:	Unconjugated
Storage:	Store at -20°C as received.
Stability:	Stable for 12 months from date of receipt.
Predicted Protein Size:	85.3 kDa
Gene Name:	membrane metalloendopeptidase
Database Link:	NP_009219 Entrez Gene 17380 Mouse Entrez Gene 24590 Rat Entrez Gene 4311 Human P08473
Synonyms:	CALLA; CD10; CMT2T; NEP; SCA43; SFE
Protein Families:	Druggable Genome, Protease, Transmembrane
Protein Pathways:	Alzheimer's disease, Hematopoietic cell lineage, Renin-angiotensin system



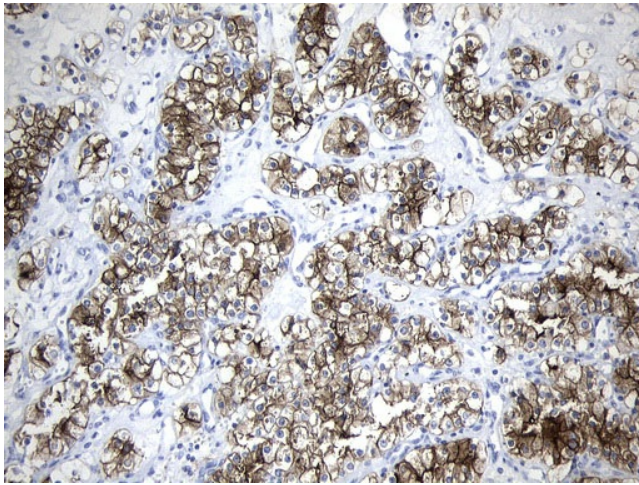
[View online »](#)

Product images:

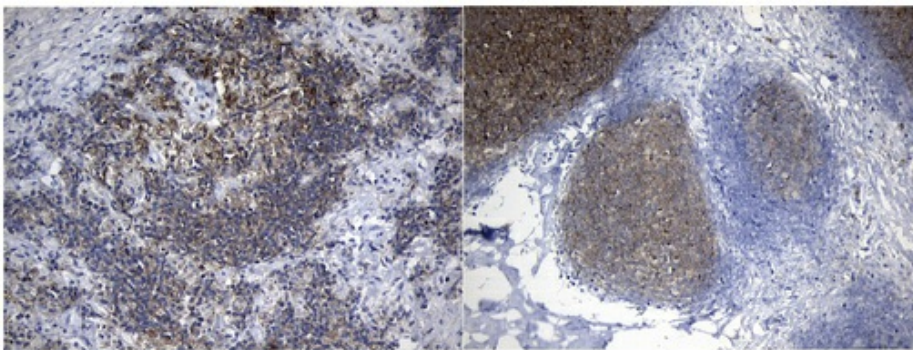
Immunohistochemical staining of paraffin-embedded Human breast tissue within the normal limits using anti-MME (CD10) mouse monoclonal antibody. (Heat-induced epitope retrieval by 1mM EDTA in 10mM Tris buffer (pH9.0) at 120°C for 3min, UM800128) (1:600)



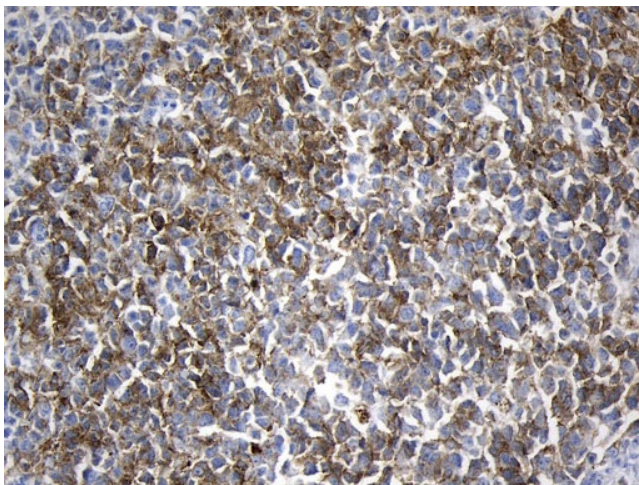
Immunohistochemical staining of paraffin-embedded Human Kidney tissue within the normal limits using anti-MME (CD10) mouse monoclonal antibody. (Heat-induced epitope retrieval by 1mM EDTA in 10mM Tris buffer (pH9.0) at 120°C for 3min, UM800128) (1:600)



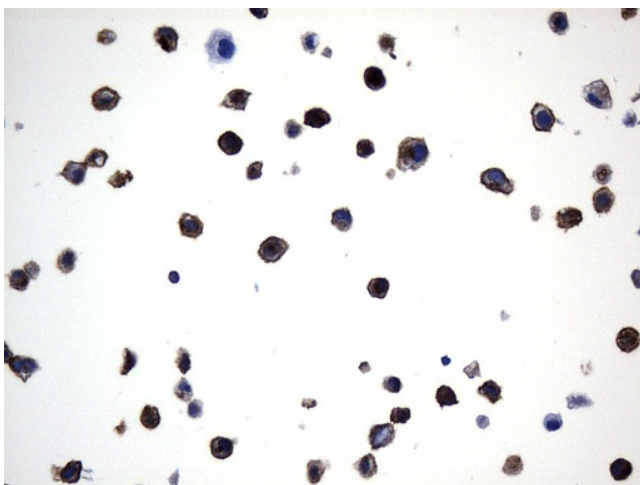
Immunohistochemical staining of paraffin-embedded Carcinoma of Human kidney tissue using anti-MME (CD10) mouse monoclonal antibody. (Heat-induced epitope retrieval by 1mM EDTA in 10mM Tris buffer (pH9.0) at 120°C for 3min, UM800128) (1:600)



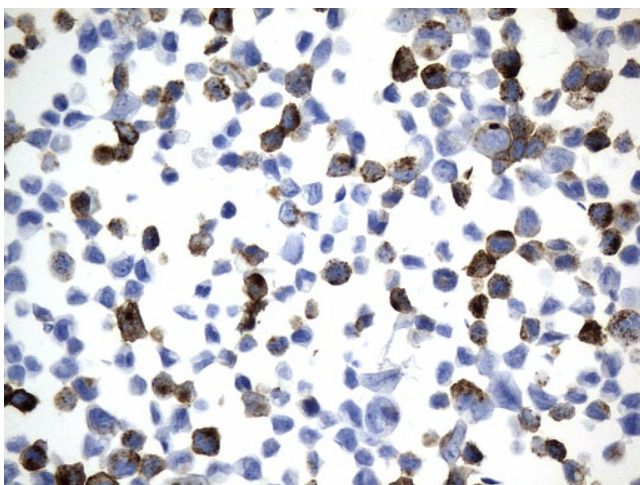
Immunohistochemical staining of paraffin-embedded Human lymphoma tissue (On the left is brukitt, on the right is follicular lymphoma) using anti-MME (CD10) Mouse monoclonal antibody. (Heat-induced epitope retrieval by 1mM EDTA in 10mM Tris buffer (pH9.0) at 120°C for 3min, UM800128) (1:600)



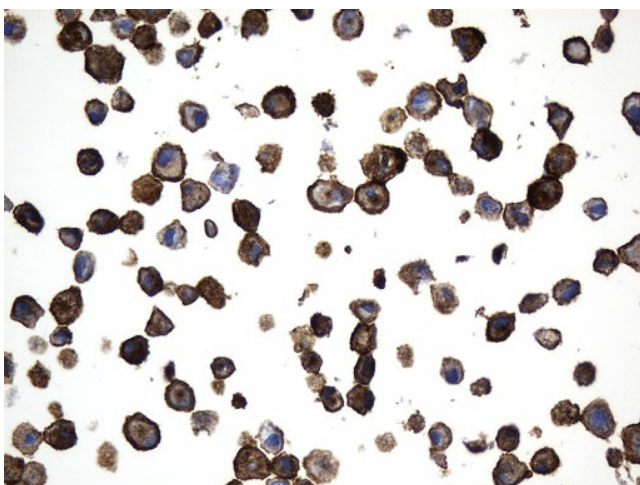
Immunohistochemical staining of paraffin-embedded Human tonsil within the normal limits using anti-MME (CD10) mouse monoclonal antibody. (Heat-induced epitope retrieval by 1mM EDTA in 10mM Tris buffer (pH8.5) at 120°C for 3min, UM800128) (1:600)



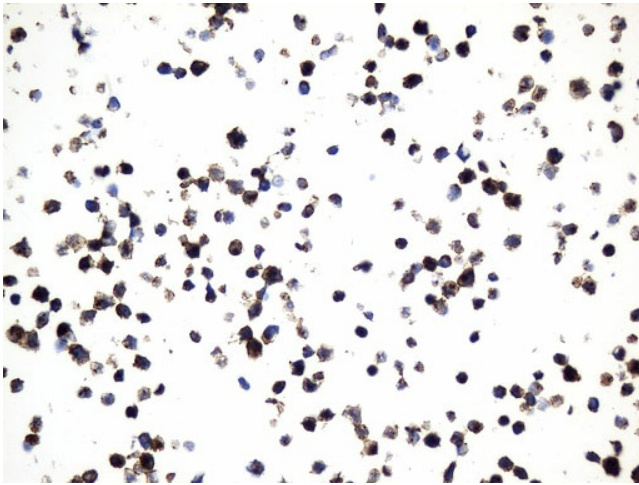
Immunohistochemical staining of paraffin-embedded NCI-H1650 cell pellets using anti-MME (CD10) mouse monoclonal antibody (Heat-induced epitope retrieval by 1mM EDTA in 10mM Tris buffer (pH9.0) at 120°C for 2.5 min, UM800128) (1:600)



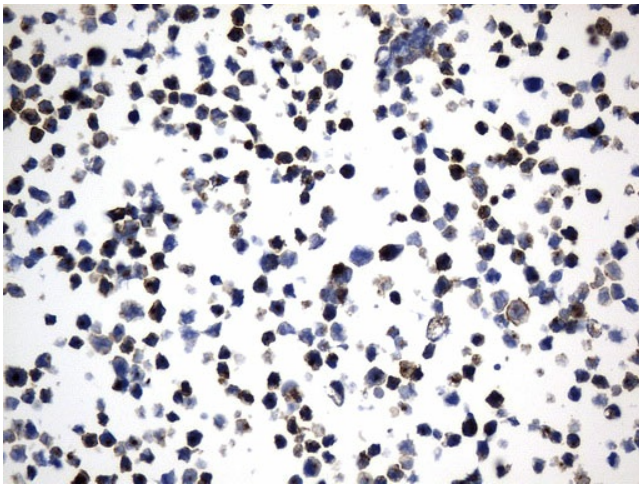
Immunohistochemical staining of paraffin-embedded MDA-MB-453 cell pellets using anti-MME (CD10) mouse monoclonal antibody (Heat-induced epitope retrieval by 1mM EDTA in 10mM Tris buffer (pH9.0) at 120°C for 2.5 min, UM800128) (1:600)



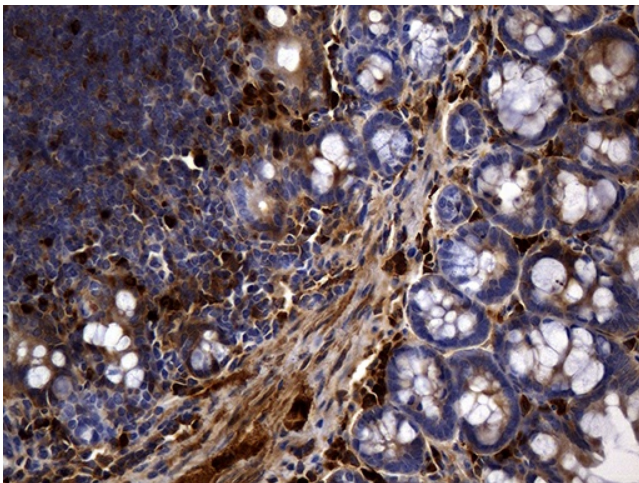
Immunohistochemical staining of paraffin-embedded SK-MEL-28 cell pellets using anti-MME (CD10) mouse monoclonal antibody (Heat-induced epitope retrieval by 1mM EDTA in 10mM Tris buffer (pH9.0) at 120°C for 2.5 min, UM800128) (1:600)



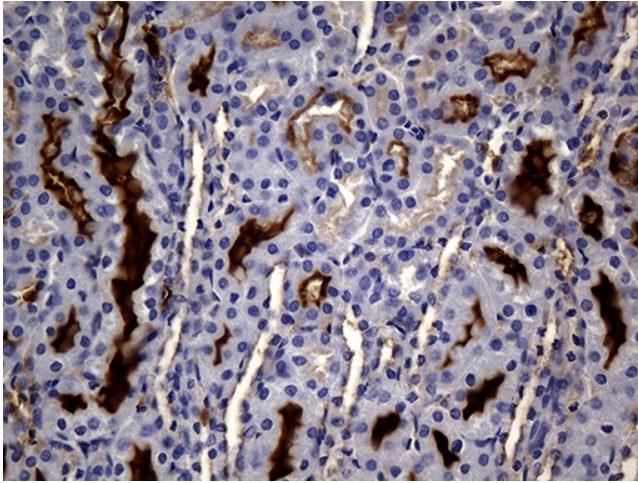
Immunohistochemical staining of paraffin-embedded Ramos cell pellets using anti-MME (CD10) mouse monoclonal antibody (Heat-induced epitope retrieval by 1mM EDTA in 10mM Tris buffer (pH9.0) at 120°C for 2.5 min, UM800128) (1:600)



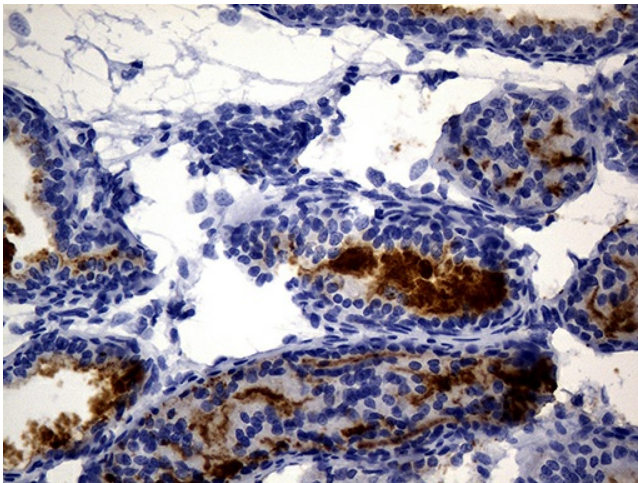
Immunohistochemical staining of paraffin-embedded Raji cell pellets using anti-MME (CD10) mouse monoclonal antibody (Heat-induced epitope retrieval by 1mM EDTA in 10mM Tris buffer (pH9.0) at 120°C for 2.5 min, UM800128) (1:600)



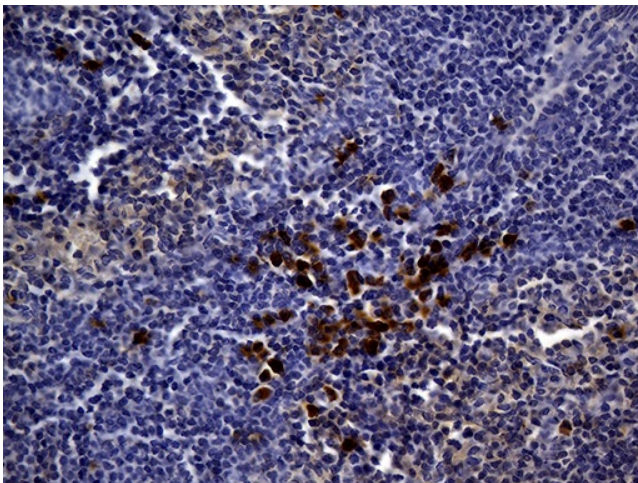
Immunohistochemical staining of paraffin-embedded mouse ascending colon tissue using anti-CD10 clone UMAB236 mouse monoclonal antibody. (Heat-induced epitope retrieval by 1mM EDTA in 10mM Tris buffer (pH8.5) at 120°C for 3min, UM800128) (1:600).



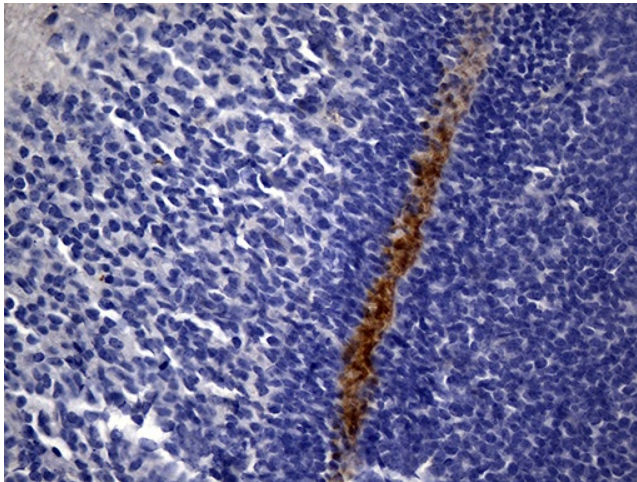
Immunohistochemical staining of paraffin-embedded mouse kidney tissue using anti-MME (CD10) clone UMAB236 mouse monoclonal antibody. (Heat-induced epitope retrieval by 1mM EDTA in 10mM Tris buffer (pH8.5) at 120°C for 3min, UM800128) (1:600).



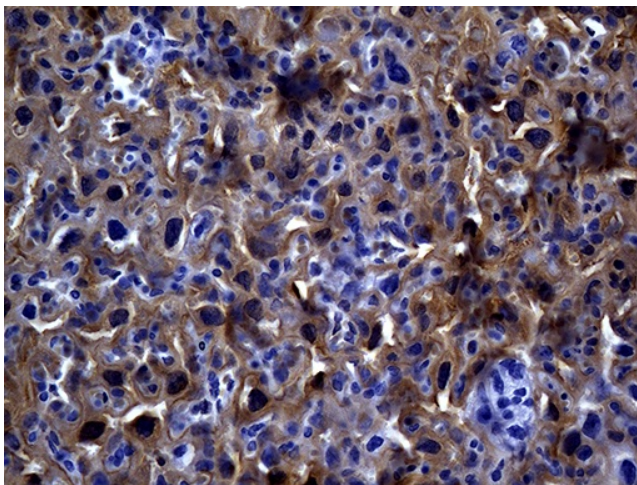
Immunohistochemical staining of paraffin-embedded mouse bladder tissue using anti-MME (CD10) clone UMAB236 mouse monoclonal antibody. (Heat-induced epitope retrieval by 1mM EDTA in 10mM Tris buffer (pH8.5) at 120°C for 3min, UM800128) (1:600).



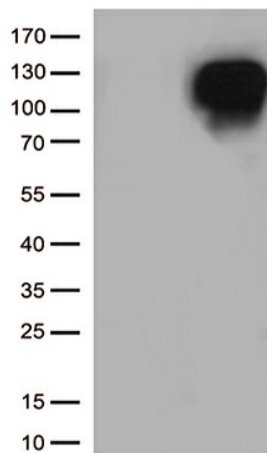
Immunohistochemical staining of paraffin-embedded mouse spleen tissue using anti-MME (CD10) clone UMAB236 mouse monoclonal antibody. (Heat-induced epitope retrieval by 1mM EDTA in 10mM Tris buffer (pH8.5) at 120°C for 3min, UM800128) (1:600).



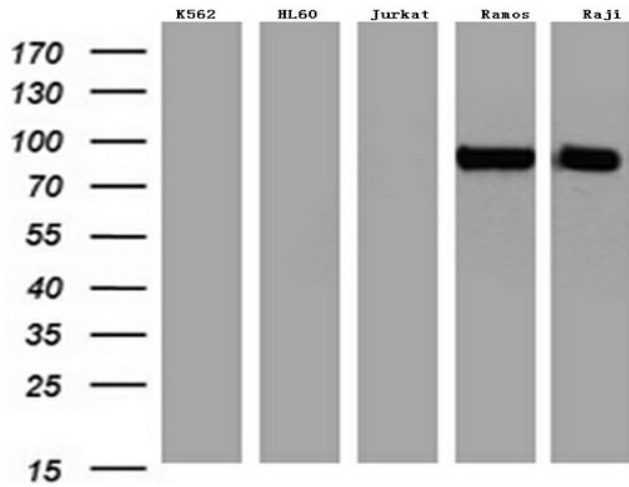
Immunohistochemical staining of paraffin-embedded mouse embryo tissue using anti-MME (CD10) clone UMAB236 mouse monoclonal antibody. (Heat-induced epitope retrieval by 1mM EDTA in 10mM Tris buffer (pH8.5) at 120°C for 3min, UM800128) (1:600).



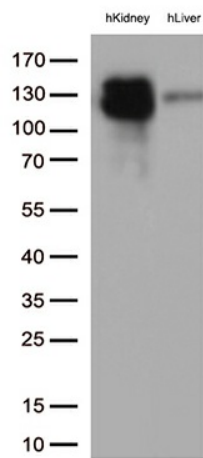
Immunohistochemical staining of paraffin-embedded mouse placenta tissue using anti-MME (CD10) clone UMAB236 mouse monoclonal antibody. (Heat-induced epitope retrieval by 1mM EDTA in 10mM Tris buffer (pH8.5) at 120°C for 3min, UM800128) (1:600).



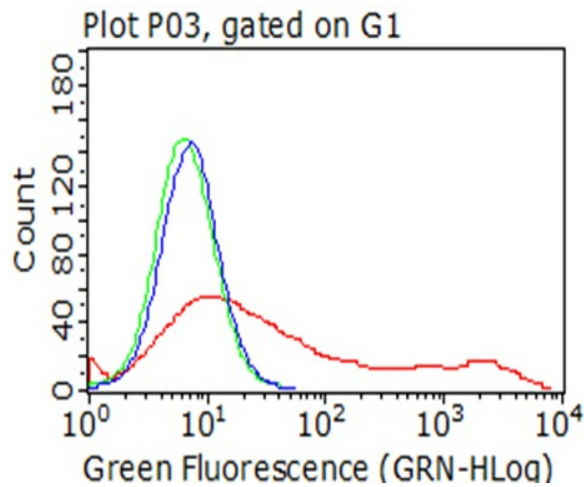
HEK293T cells were transfected with the pCMV6-ENTRY control (Left lane) or pCMV6-ENTRY MME ([RC223013], Right lane) cDNA for 48 hrs and lysed. Equivalent amounts of cell lysates (5 ug per lane) were separated by SDS-PAGE and immunoblotted with anti-MME (1:500).



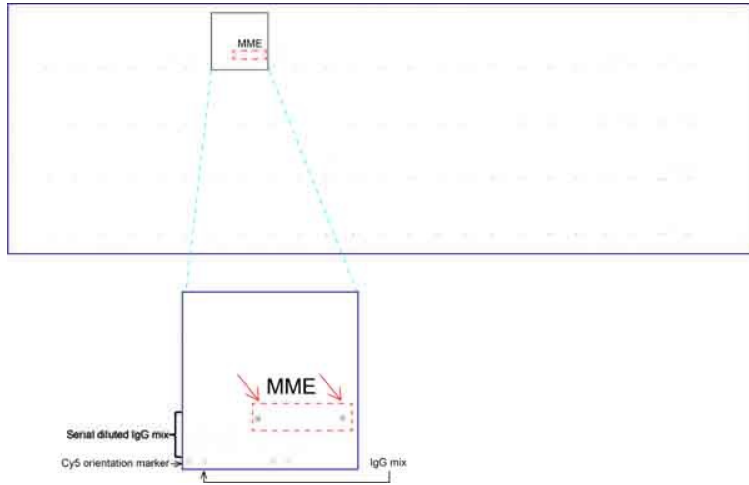
Western blot analysis of extracts (35ug) from 5 different cancer cell lines by using anti-MME (CD10) monoclonal antibody (1:500).



Western blot analysis of extracts (35ug) from 2 tissues lysates by using anti-MME monoclonal antibody (1:500).



Flow cytometric analysis of living 293T cells transfected with MME overexpression plasmid ([RC223013]), Red)/empty vector ([PS100001], Blue) using anti-MME antibody (UM800128). Cells incubated with a non-specific antibody (Green) were used as isotype control (1:100).



OriGene overexpression protein microarray chip was immunostained with UltraMAB anti-MME (CD10) mouse monoclonal antibody (UM800128). The positive reactive proteins are highlighted with two red arrows in the enlarged subarray. All the positive controls spotted in this subarray are also labeled for clarification. (1:150) (1:100)