

## Product datasheet for **UM800127CF**

### CD10 (MME) Mouse Monoclonal Antibody [Clone ID: UMAB235]

#### Product data:

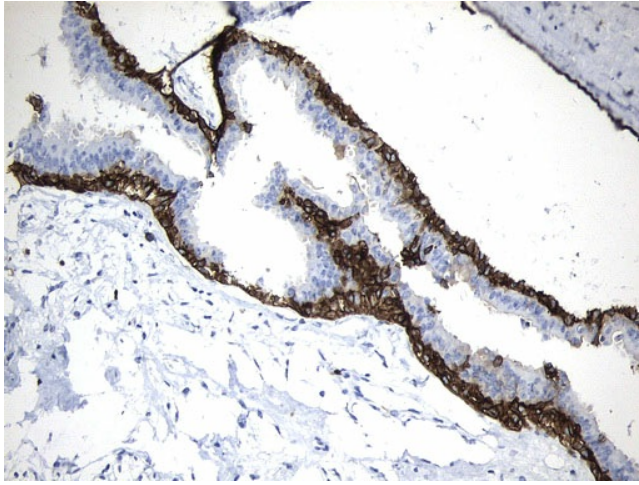
Product Type:	Primary Antibodies
Clone Name:	UMAB235
Applications:	FC, IHC, WB
Recommended Dilution:	WB 1:500, IHC 1:600
Reactivity:	Human, Mouse, Rat
Host:	Mouse
Isotype:	IgG1
Clonality:	Monoclonal
Immunogen:	Human recombinant protein fragment corresponding to amino acids 411-750 of human MME (CD10) (NP_009219) produced in E.coli.
Formulation:	Lyophilized powder (original buffer 1X PBS, pH 7.3, 8% trehalose)
Reconstitution Method:	For reconstitution, we recommend adding 100uL distilled water to a final antibody concentration of about 1 mg/mL. To use this carrier-free antibody for conjugation experiment, we strongly recommend performing another round of desalting process. (OriGene recommends Zeba Spin Desalting Columns, 7KMWCO from Thermo Scientific)
Purification:	Purified from mouse ascites fluids or tissue culture supernatant by affinity chromatography (protein A/G)
Conjugation:	Unconjugated
Storage:	Store at -20°C as received.
Stability:	Stable for 12 months from date of receipt.
Predicted Protein Size:	85.3 kDa
Gene Name:	membrane metalloendopeptidase
Database Link:	<a href="#">NP_009219</a> <a href="#">Entrez Gene 17380 Mouse</a> <a href="#">Entrez Gene 24590 Rat</a> <a href="#">Entrez Gene 4311 Human</a> <a href="#">P08473</a>
Synonyms:	CALLA; CD10; CMT2T; NEP; SCA43; SFE
Protein Families:	Druggable Genome, Protease, Transmembrane



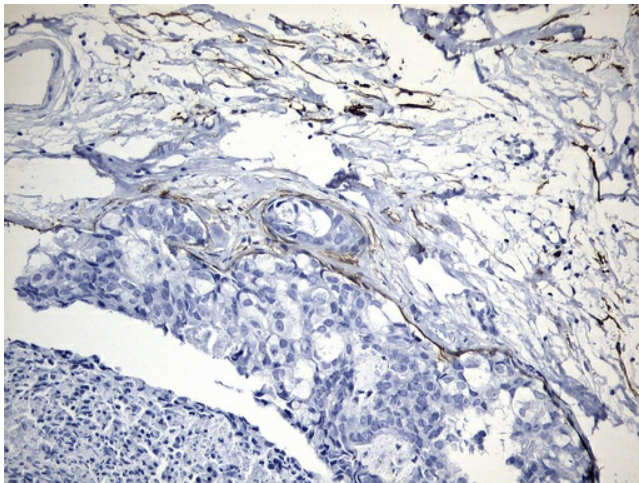
[View online »](#)

Protein Pathways: Alzheimer's disease, Hematopoietic cell lineage, Renin-angiotensin system

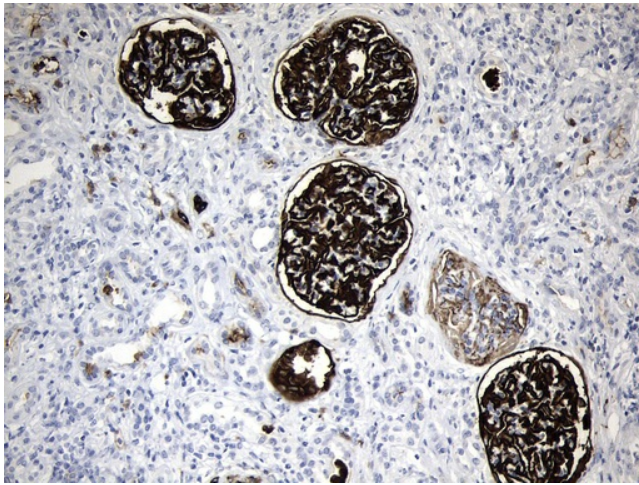
### Product images:



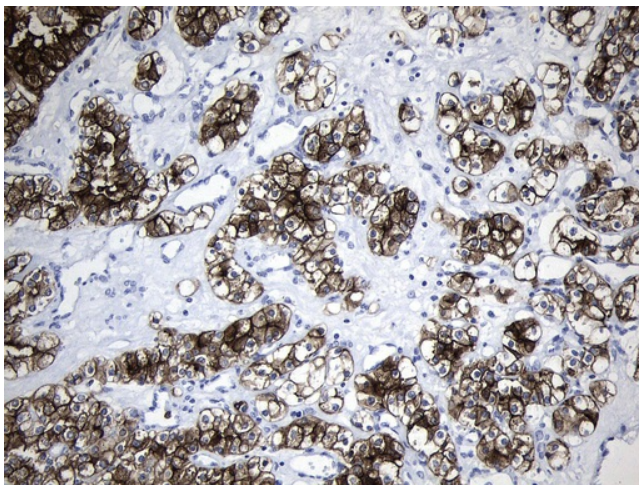
Immunohistochemical staining of paraffin-embedded Human breast tissue within the normal limits using anti-MME (CD10) mouse monoclonal antibody. (Heat-induced epitope retrieval by 1mM EDTA in 10mM Tris buffer (pH9.0) at 120°C for 3min, [UM800127]) (1:600)



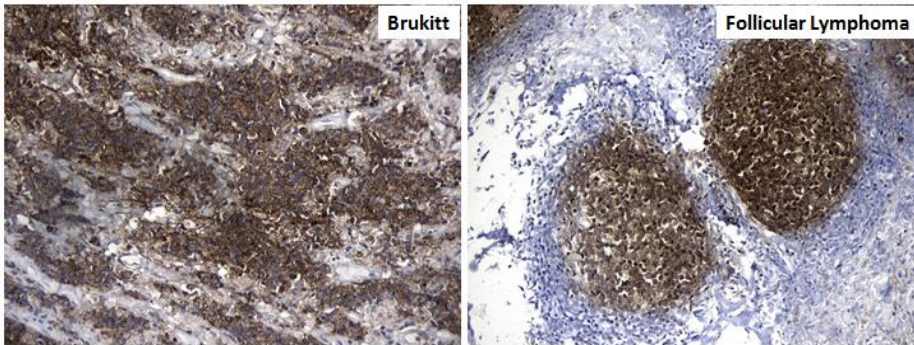
Immunohistochemical staining of paraffin-embedded Adenocarcinoma of Human breast tissue using anti-MME (CD10) mouse monoclonal antibody. (Heat-induced epitope retrieval by 1mM EDTA in 10mM Tris buffer (pH9.0) at 120°C for 3min, [UM800127]) (1:600)



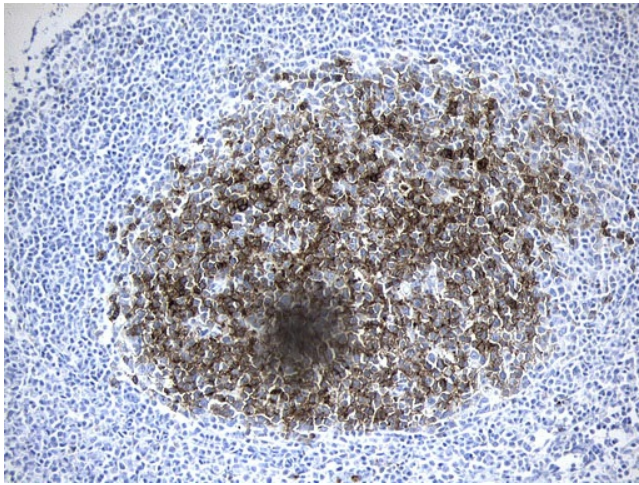
Immunohistochemical staining of paraffin-embedded Human Kidney tissue within the normal limits using anti-MME (CD10) mouse monoclonal antibody. (Heat-induced epitope retrieval by 1mM EDTA in 10mM Tris buffer (pH9.0) at 120°C for 3min, [UM800127]) (1:600)



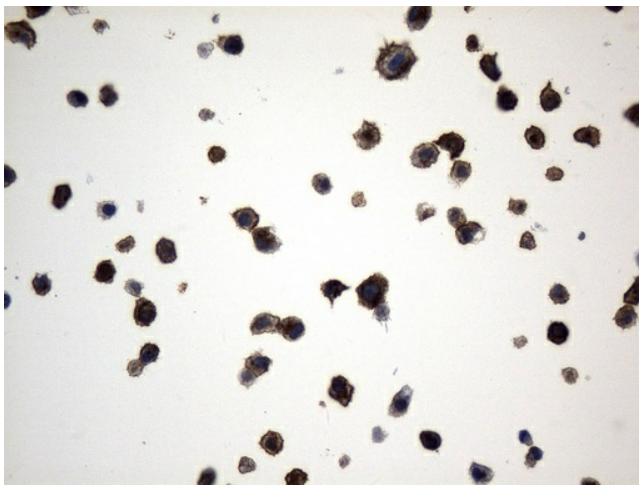
Immunohistochemical staining of paraffin-embedded Carcinoma of Human kidney tissue using anti-MME (CD10) mouse monoclonal antibody. (Heat-induced epitope retrieval by 1mM EDTA in 10mM Tris buffer (pH9.0) at 120°C for 3min, [UM800127]) (1:600)



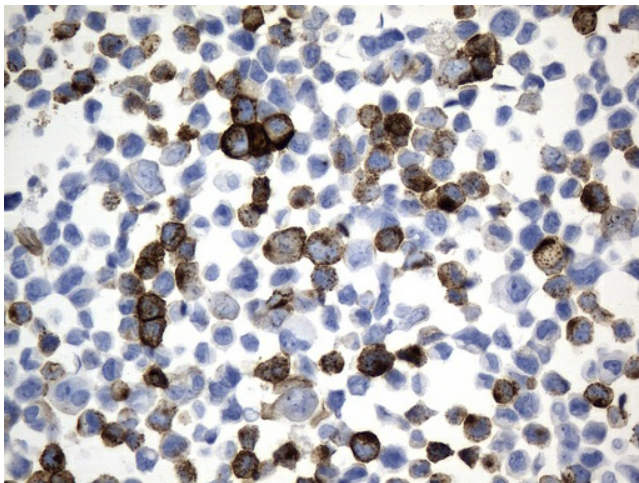
Immunohistochemical staining of paraffin-embedded Human lymphoma tissue (On the left is brukitt, on the right is follicular lymphoma) using anti-MME (CD10) Mouse monoclonal antibody. (Heat-induced epitope retrieval by 1mM EDTA in 10mM Tris buffer (pH9.0) at 120°C for 3min, [UM800127]) (1:600)



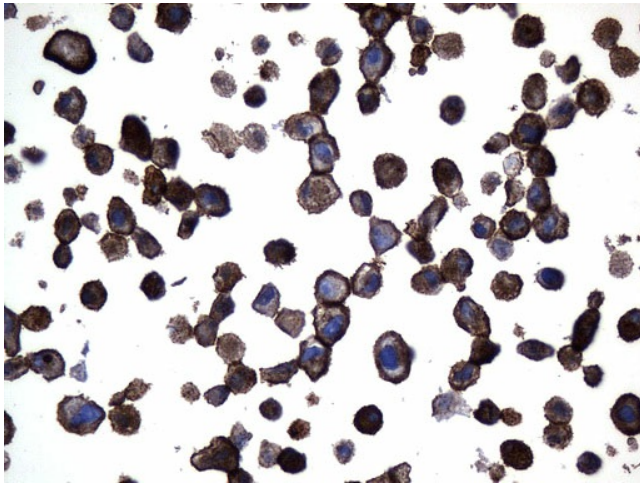
Immunohistochemical staining of paraffin-embedded Human tonsil within the normal limits using anti-MME (CD10) mouse monoclonal antibody. (Heat-induced epitope retrieval by 1mM EDTA in 10mM Tris buffer (pH9.0) at 120°C for 3min, [UM800127]) (1:600)



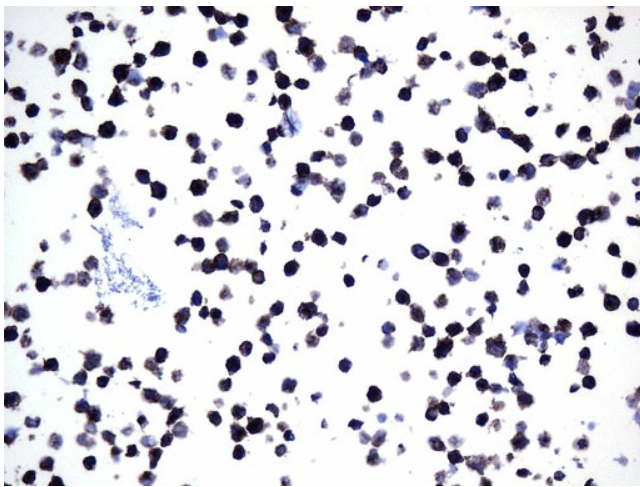
Immunohistochemical staining of paraffin-embedded NCI-H1650 cell pellets using anti-MME (CD10) mouse monoclonal antibody (Heat-induced epitope retrieval by 1mM EDTA in 10mM Tris buffer (pH9.0) at 120°C for 2.5 min, [UM800127]) (1:600)



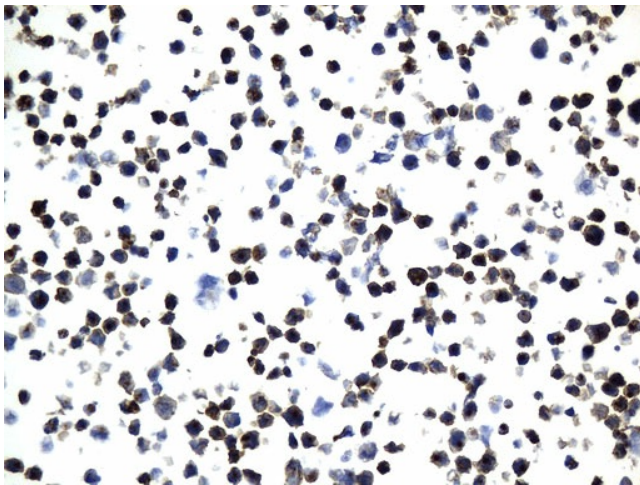
Immunohistochemical staining of paraffin-embedded MDA-MB-453 cell pellets using anti-MME (CD10) mouse monoclonal antibody (Heat-induced epitope retrieval by 1mM EDTA in 10mM Tris buffer (pH9.0) at 120°C for 2.5 min, [UM800127]) (1:600)



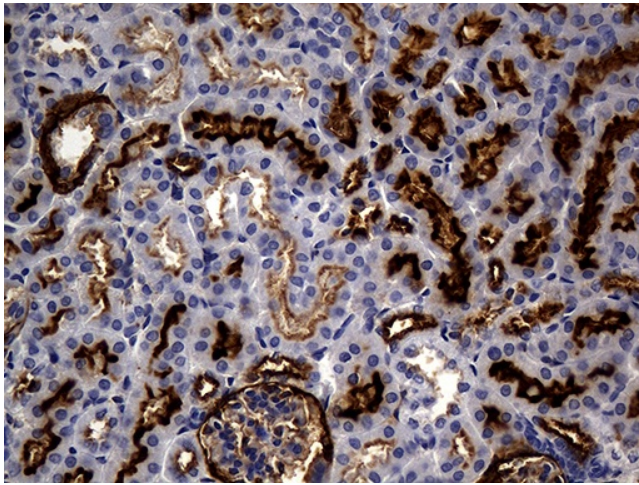
Immunohistochemical staining of paraffin-embedded SK-MEL-28 cell pellets using anti-MME (CD10) mouse monoclonal antibody (Heat-induced epitope retrieval by 1mM EDTA in 10mM Tris buffer (pH9.0) at 120°C for 2.5 min, [UM800127]) (1:600)



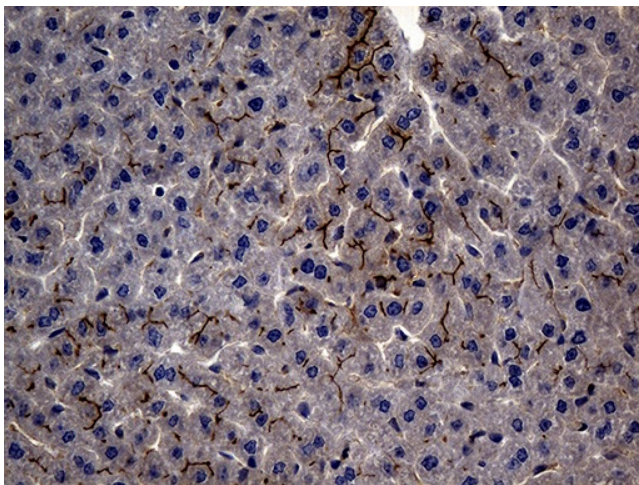
Immunohistochemical staining of paraffin-embedded Ramos cell pellets using anti-MME (CD10) mouse monoclonal antibody (Heat-induced epitope retrieval by 1mM EDTA in 10mM Tris buffer (pH9.0) at 120°C for 2.5 min, [UM800127]) (1:600)



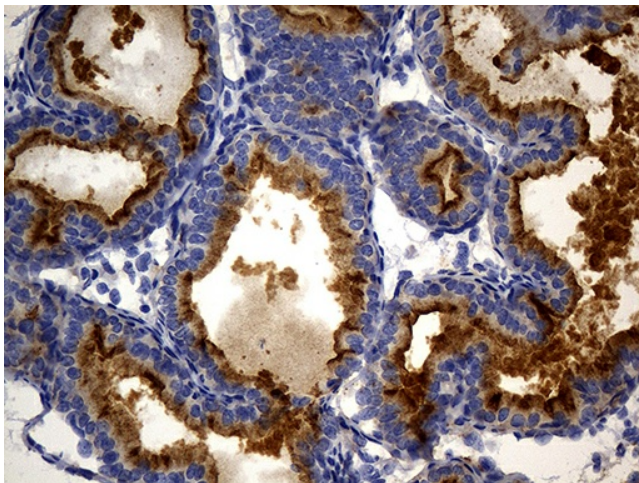
Immunohistochemical staining of paraffin-embedded Raji cell pellets using anti-MME (CD10) mouse monoclonal antibody (Heat-induced epitope retrieval by 1mM EDTA in 10mM Tris buffer (pH9.0) at 120°C for 2.5 min, [UM800127]) (1:600)



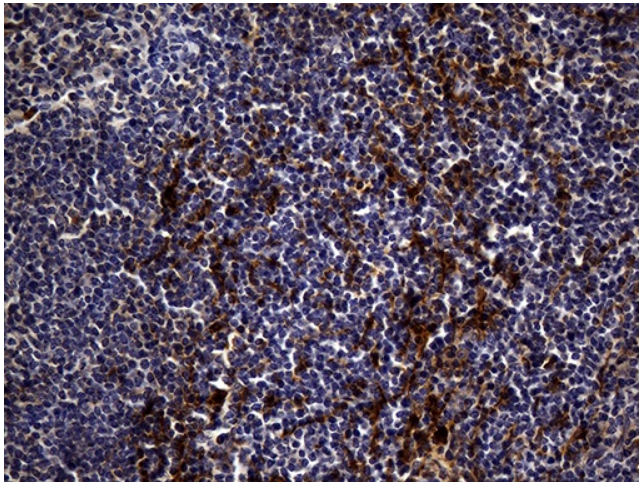
Immunohistochemical staining of paraffin-embedded mouse kidney tissue using anti-MME (CD10) clone UMAB235 mouse monoclonal antibody. (Heat-induced epitope retrieval by 1mM EDTA in 10mM Tris buffer (pH8.5) at 120°C for 3min, [UM800127]) (1:300).



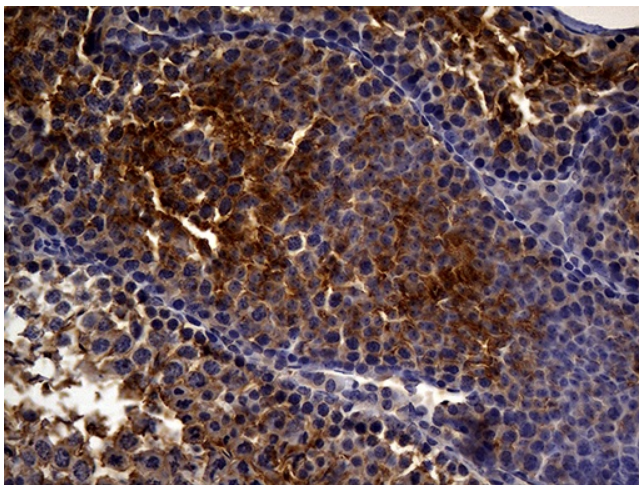
Immunohistochemical staining of paraffin-embedded mouse liver tissue using anti-MME (CD10) mouse clone UMAB235 monoclonal antibody. (Heat-induced epitope retrieval by 1mM EDTA in 10mM Tris buffer (pH8.5) at 120°C for 3min, [UM800127]) (1:300).



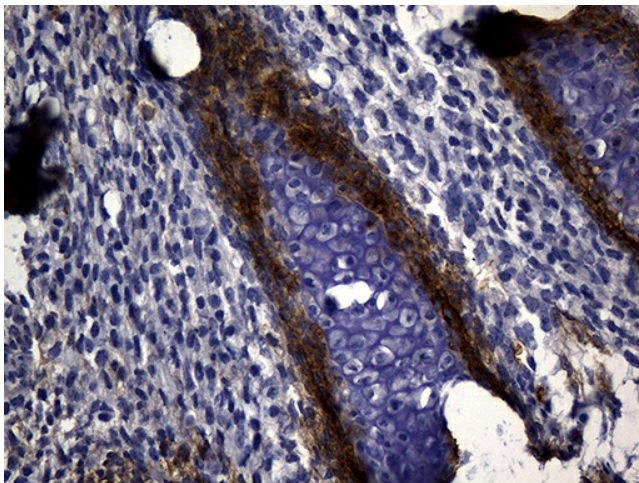
Immunohistochemical staining of paraffin-embedded mouse bladder tissue using anti-MME (CD10) clone UMAB235 mouse monoclonal antibody. (Heat-induced epitope retrieval by 1mM EDTA in 10mM Tris buffer (pH8.5) at 120°C for 3min, [UM800127]) (1:300).



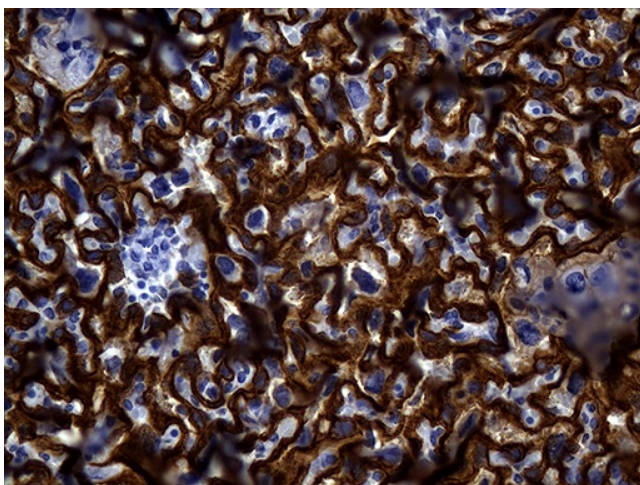
Immunohistochemical staining of paraffin-embedded mouse spleen tissue using anti-MME (CD10) clone UMAB235 mouse monoclonal antibody. (Heat-induced epitope retrieval by 1mM EDTA in 10mM Tris buffer (pH8.5) at 120°C for 3min, [UM800127]) (1:300).



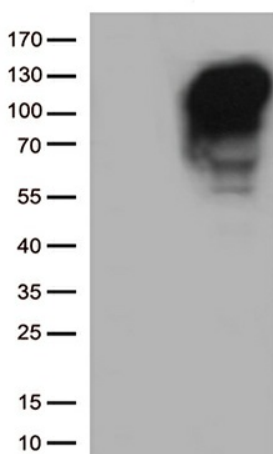
Immunohistochemical staining of paraffin-embedded mouse testicle tissue using anti-MME (CD10) clone UMAB235 mouse monoclonal antibody. (Heat-induced epitope retrieval by 1mM EDTA in 10mM Tris buffer (pH8.5) at 120°C for 3min, [UM800127]) (1:300).



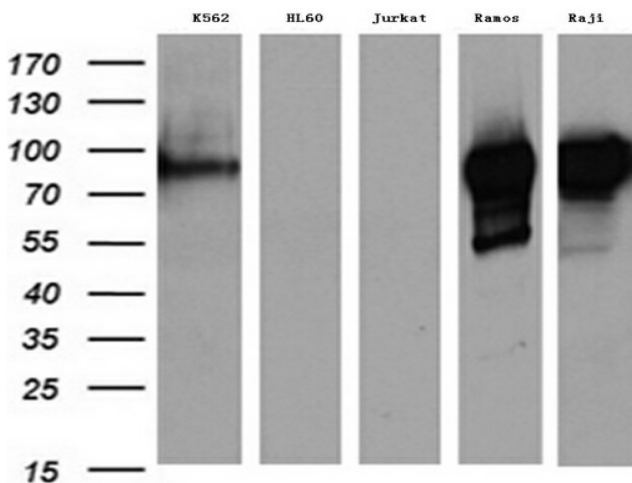
Immunohistochemical staining of paraffin-embedded mouse embryonic tissue using anti-MME (CD10) clone UMAB235 mouse monoclonal antibody. (Heat-induced epitope retrieval by 1mM EDTA in 10mM Tris buffer (pH8.5) at 120°C for 3min, [UM800127]) (1:300).



Immunohistochemical staining of paraffin-embedded mouse placenta tissue using anti-MME (CD10) clone UMAB235 mouse monoclonal antibody. (Heat-induced epitope retrieval by 1mM EDTA in 10mM Tris buffer (pH8.5) at 120°C for 3min, [UM800127]) (1:300).

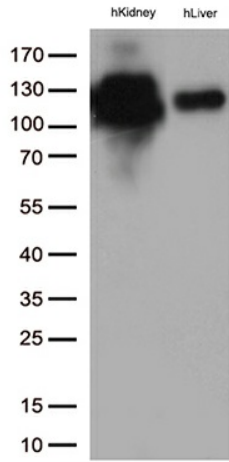


HEK293T cells were transfected with the pCMV6-ENTRY control (Left lane) or pCMV6-ENTRY MME ([RC223013], Right lane) cDNA for 48 hrs and lysed. Equivalent amounts of cell lysates (5 ug per lane) were separated by SDS-PAGE and immunoblotted with anti-MME (1:500).

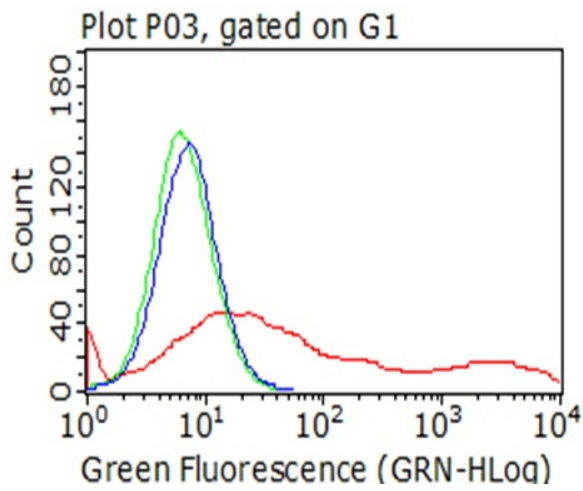


Western blot analysis of extracts (35ug) from 5 different cancer cell lines by using anti-MME (CD10) monoclonal antibody (1:500).





Western blot analysis of extracts (35ug) from 2 tissues lysates by using anti-MME monoclonal antibody (1:500).



Flow cytometric analysis of living 293T cells transfected with MME overexpression plasmid ([RC223013], Red)/empty vector ([PS100001], Blue) using anti-MME antibody ([UM800127]). Cells incubated with a non-specific antibody (Green) were used as isotype control (1:100).