

## Product datasheet for **UM800126CF**

### EGFR Mouse Monoclonal Antibody [Clone ID: UMAB234]

#### Product data:

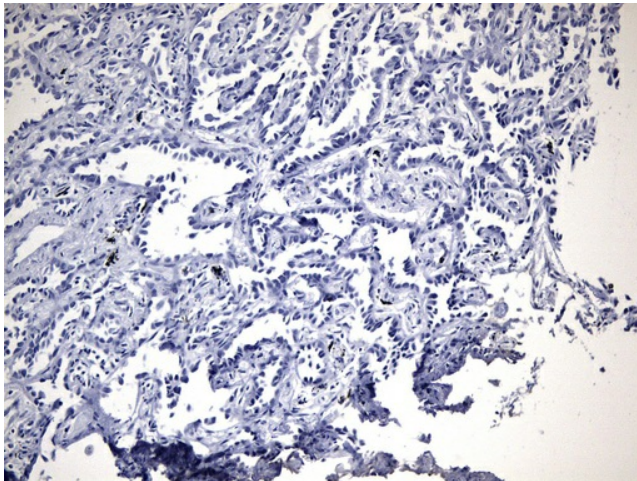
|                        |  |
|------------------------|--|
| Product Type:          | Primary Antibodies   |
| Clone Name:            | UMAB234  |
| Applications:          | IHC  |
| Recommended Dilution:  | IHC 1:300  |
| Reactivity:            | Human, Mouse, Rat  |
| Host:                  | Mouse  |
| Isotype:               | IgG2b  |
| Clonality:             | Monoclonal   |
| Immunogen:             | Synthetic peptide around the L858R mutation region of the human EGFR conjugated to KLH   |
| Formulation:           | Lyophilized powder (original buffer 1X PBS, pH 7.3, 8% trehalose)  |
| Reconstitution Method: | For reconstitution, we recommend adding 100uL distilled water to a final antibody concentration of about 1 mg/mL. To use this carrier-free antibody for conjugation experiment, we strongly recommend performing another round of desalting process. (OriGene recommends Zeba Spin Desalting Columns, 7KMWCO from Thermo Scientific) |
| Purification:          | Purified from mouse ascites fluids or tissue culture supernatant by affinity chromatography (protein A/G)  |
| Conjugation:           | Unconjugated   |
| Storage:               | Store at -20°C as received.  |
| Stability:             | Stable for 12 months from date of receipt.   |
| Gene Name:             | epidermal growth factor receptor   |
| Database Link:         | <a href="#">NP_005219</a><br><a href="#">Entrez Gene 13649 Mouse</a> <a href="#">Entrez Gene 24329 Rat</a> <a href="#">Entrez Gene 1956 Human</a><br><a href="#">P00533</a>  |
| Synonyms:              | ERBB; ERBB1; ERRP; HER1; mENA; NISBD2; PIG61   |
| Protein Families:      | Adult stem cells, Cancer stem cells, Druggable Genome, ES Cell Differentiation/IPS, Protein Kinase, Secreted Protein, Stem cell relevant signaling - JAK/STAT signaling pathway, Transmembrane   |



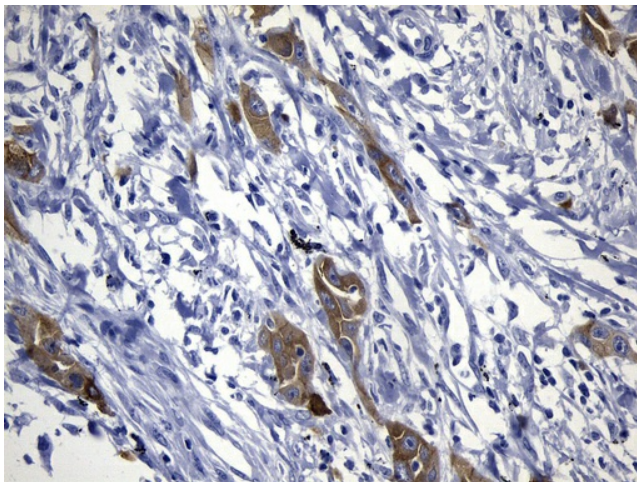
[View online »](#)

**Protein Pathways:**

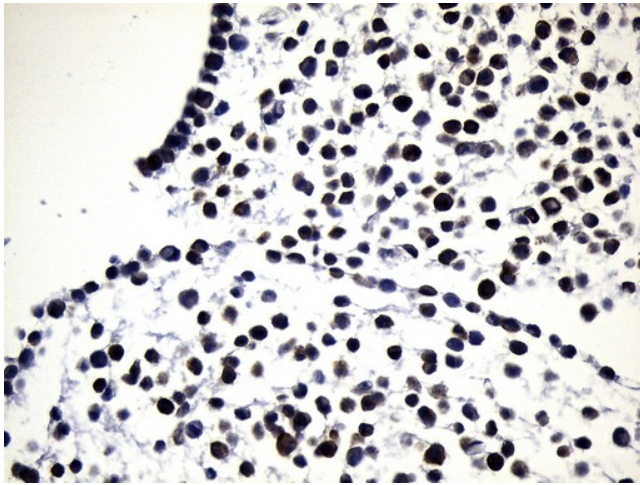
Adherens junction, Bladder cancer, Calcium signaling pathway, Colorectal cancer, Cytokine-cytokine receptor interaction, Dorso-ventral axis formation, Endocytosis, Endometrial cancer, Epithelial cell signaling in Helicobacter pylori infection, ErbB signaling pathway, Focal adhesion, Gap junction, Glioma, GnRH signaling pathway, MAPK signaling pathway, Melanoma, Non-small cell lung cancer, Pancreatic cancer, Pathways in cancer, Prostate cancer, Regulation of actin cytoskeleton

**Product images:**

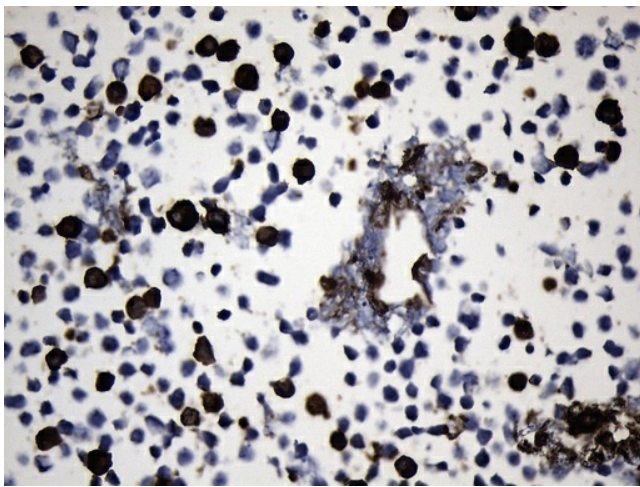
Immunohistochemical staining of paraffin-embedded EGFR L858R negative NSCLC tissue using anti-EGFR L858R mouse monoclonal antibody. (Heat-induced epitope retrieval by 1mM EDTA in 10mM Tris buffer (pH8.5) at 120°C for 3min, [UM800126]) (1:300)



Immunohistochemical staining of paraffin-embedded EGFR L858R positive NSCLC tissue using anti-EGFR L858R mouse monoclonal antibody. (Heat-induced epitope retrieval by 1mM EDTA in 10mM Tris buffer (pH8.5) at 120°C for 3min, [UM800126]) (1:300)



Immunohistochemical staining of paraffin-embedded NCI-H1975 cell pellets using anti-EGFR L858R mouse monoclonal antibody (Heat-induced epitope retrieval by 1mM EDTA in 10mM Tris buffer (pH8.0) at 120°C for 2.5 min, [UM800126]) (1:300)



Immunohistochemical staining of paraffin-embedded 293T transfected with EGFR L858R ([RC400290]) cell pellets using anti-EGFR L858R mouse monoclonal antibody (Heat-induced epitope retrieval by 1mM EDTA in 10mM Tris buffer (pH8.0) at 120°C for 2.5 min, [UM800126]) (1:300)