

Product datasheet for **UM800125CF**

EGFR Mouse Monoclonal Antibody [Clone ID: UMAB233]

Product data:

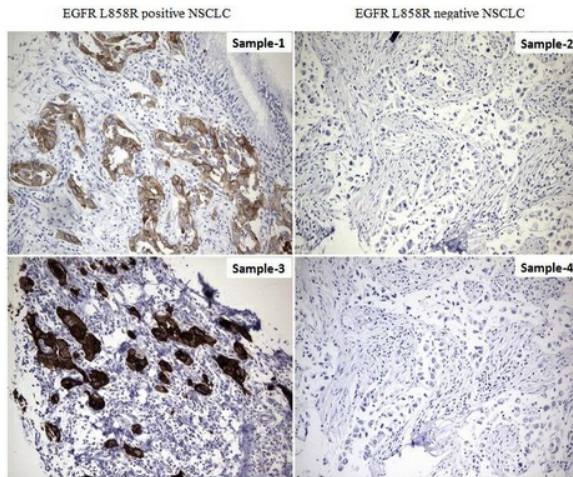
Product Type:	Primary Antibodies
Clone Name:	UMAB233
Applications:	IF, IHC
Recommended Dilution:	IHC 1:300, IF 1:50
Reactivity:	Human, Mouse, Rat
Host:	Mouse
Isotype:	IgG1
Clonality:	Monoclonal
Immunogen:	Synthetic peptide around the L858R mutation region of the human EGFR conjugated to KLH
Formulation:	Lyophilized powder (original buffer 1X PBS, pH 7.3, 8% trehalose)
Reconstitution Method:	For reconstitution, we recommend adding 100uL distilled water to a final antibody concentration of about 1 mg/mL. To use this carrier-free antibody for conjugation experiment, we strongly recommend performing another round of desalting process. (OriGene recommends Zeba Spin Desalting Columns, 7KMWCO from Thermo Scientific)
Purification:	Purified from mouse ascites fluids or tissue culture supernatant by affinity chromatography (protein A/G)
Conjugation:	Unconjugated
Storage:	Store at -20°C as received.
Stability:	Stable for 12 months from date of receipt.
Gene Name:	epidermal growth factor receptor
Database Link:	NP_005219 Entrez Gene 13649 Mouse Entrez Gene 24329 Rat Entrez Gene 1956 Human P00533
Synonyms:	ERBB; ERBB1; ERRP; HER1; mENA; NISBD2; PIG61
Protein Families:	Adult stem cells, Cancer stem cells, Druggable Genome, ES Cell Differentiation/IPS, Protein Kinase, Secreted Protein, Stem cell relevant signaling - JAK/STAT signaling pathway, Transmembrane



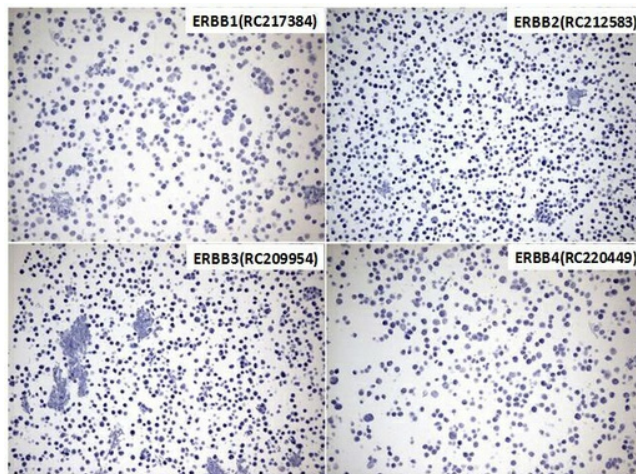
[View online »](#)

Protein Pathways:

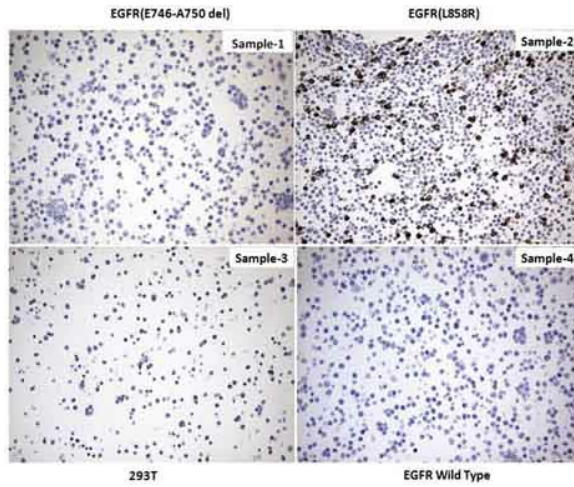
Adherens junction, Bladder cancer, Calcium signaling pathway, Colorectal cancer, Cytokine-cytokine receptor interaction, Dorso-ventral axis formation, Endocytosis, Endometrial cancer, Epithelial cell signaling in Helicobacter pylori infection, ErbB signaling pathway, Focal adhesion, Gap junction, Glioma, GnRH signaling pathway, MAPK signaling pathway, Melanoma, Non-small cell lung cancer, Pancreatic cancer, Pathways in cancer, Prostate cancer, Regulation of actin cytoskeleton

Product images:


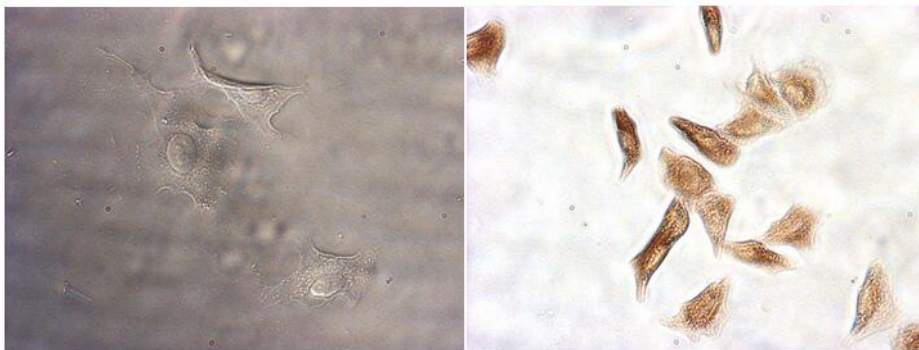
Immunohistochemical staining of paraffin-embedded Carcinoma of Human lung tissue (Sample1 and sample3 are EGFR L858R positive NSCLC, sample2 and sample4 are EGFR L858R negative NSCLC) using anti-EGFR L858R Mouse monoclonal antibody. (Heat-induced epitope retrieval by 1mM EDTA in 10mM Tris buffer (pH8.5) at 120°C for 3min, [UM800125]) (1:300)



Immunohistochemical staining of paraffin-embedded ERBB superfamily members cell pellets (Sample 1 is ERBB1 ([RC217384]), Sample 2 is ERBB2 ([RC212583]), Sample 3 is ERBB3 ([RC209954]), Sample 4 is ERBB4 ([RC220449])) using anti-EGFR L858R Mouse monoclonal antibody (Heat-induced epitope retrieval by 1mM EDTA in 10mM Tris buffer (pH8.0) at 120°C for 2.5 min, [UM800125]) (1:300)



Immunohistochemical staining of paraffin-embedded over-expressed wild type and mutant EGFR cell pellets (Sample 1 is EGFR (E746-A750 del), Sample 2 is EGFR (L858R), Sample 3 is 293T, Sample 4 is EGFR Wild Type) using anti-EGFR L858R Mouse monoclonal antibody (Heat-induced epitope retrieval by 1mM EDTA in 10mM Tris buffer (pH8.0) at 120°C for 2.5 min, [UM800125]) (1:300)


A549
NCI-H1975

Immunocytochemistry staining of cell lines (On the left is A549, on the right is NCI-H1975) using anti-EGFR L858R mouse monoclonal antibody ([UM800125]) (1:50).