

Product datasheet for **UM800120**

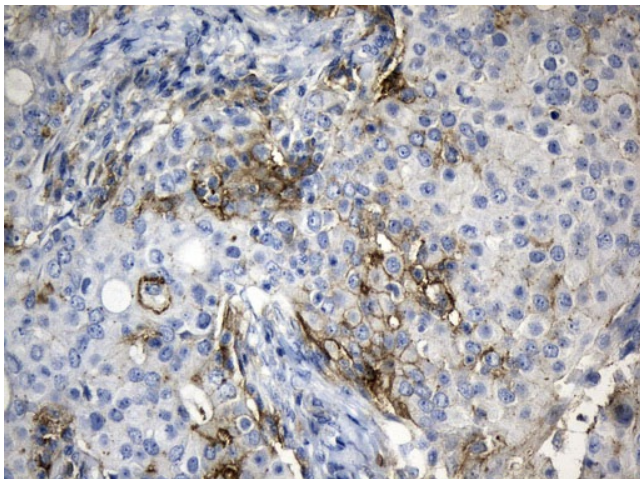
PD-L1 (CD274) Mouse Monoclonal Antibody [Clone ID: UMAB228]

Product data:

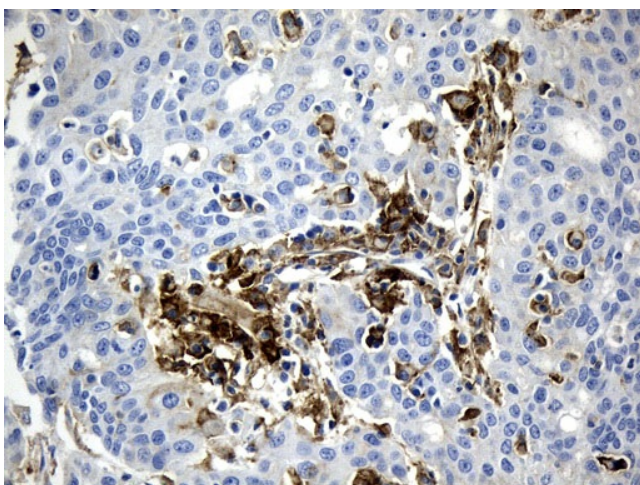
Product Type:	Primary Antibodies
Clone Name:	UMAB228
Applications:	IHC, WB
Recommended Dilution:	WB 1:500, IHC 1:300
Reactivity:	Human
Host:	Mouse
Isotype:	IgG1
Clonality:	Monoclonal
Immunogen:	Human recombinant protein fragment corresponding to amino acids 19-290 of human CD274 (PD-L1) (NP_054862) produced in E.coli.
Formulation:	PBS (pH 7.3) containing 1% BSA, 50% glycerol and 0.02% sodium azide.
Concentration:	0.5~1.0 mg/ml (Lot Dependent)
Purification:	Purified from mouse ascites fluids or tissue culture supernatant by affinity chromatography (protein A/G)
Conjugation:	Unconjugated
Storage:	Store at -20°C as received.
Stability:	Stable for 12 months from date of receipt.
Predicted Protein Size:	33.28 kDa
Gene Name:	CD274 molecule
Database Link:	NP_054862 Entrez Gene 29126 Human Q9NZQ7
Synonyms:	B7-H; B7H1; PD-L1; PDCD1L1; PDCD1LG1; PDL1
Protein Families:	Druggable Genome, Transmembrane
Protein Pathways:	Cell adhesion molecules (CAMs)

[View online »](#)

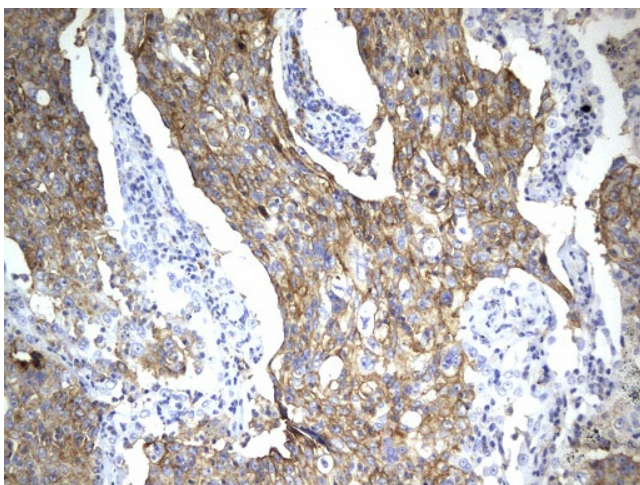
Product images:



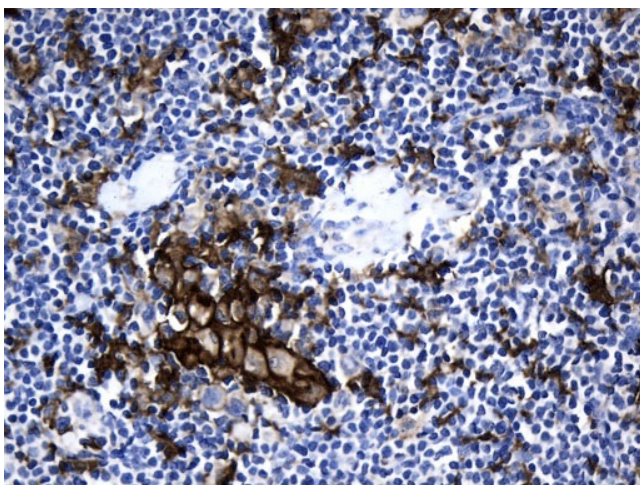
Immunohistochemical staining of paraffin-embedded Adenocarcinoma of Human breast tissue using anti-CD274 (PD-L1) mouse monoclonal antibody. (Heat-induced epitope retrieval by 1mM EDTA in 10mM Tris buffer (pH9.0) at 120°C for 2.5 min, UM800120) (1:300)



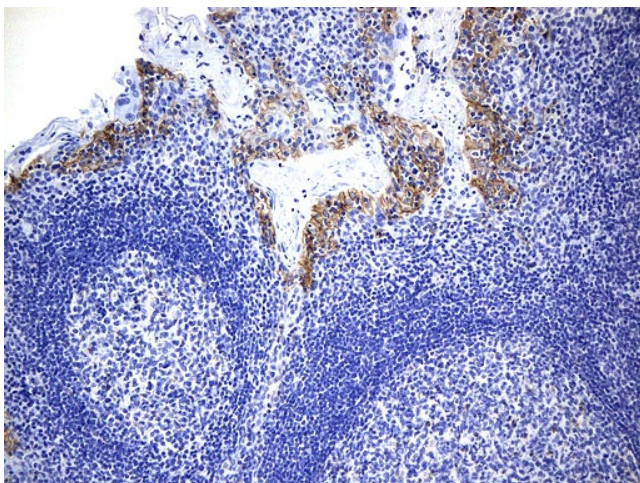
Immunohistochemical staining of paraffin-embedded Carcinoma of Human liver tissue using anti-CD274 (PD-L1) mouse monoclonal antibody. (Heat-induced epitope retrieval by 1mM EDTA in 10mM Tris buffer (pH9.0) at 120°C for 2.5 min, UM800120) (1:300)



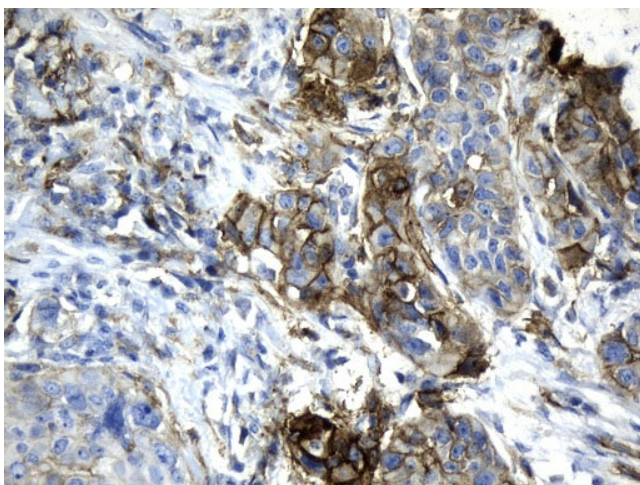
Immunohistochemical staining of paraffin-embedded Carcinoma of Human lung tissue using anti-CD274 (PD-L1) mouse monoclonal antibody. (Heat-induced epitope retrieval by 1mM EDTA in 10mM Tris buffer (pH9.0) at 120°C for 2.5 min, UM800120) (1:300)



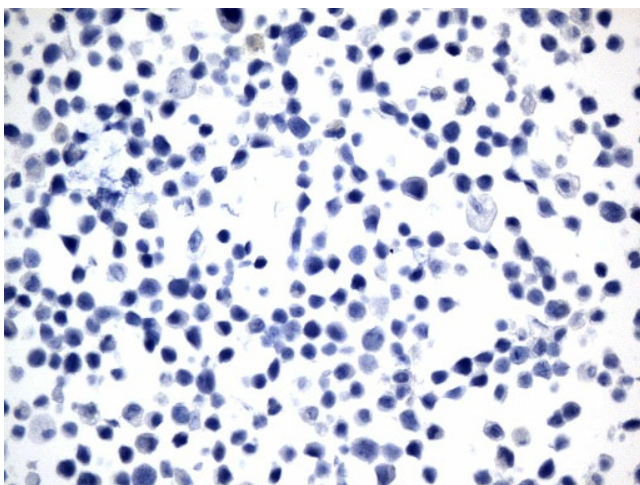
Immunohistochemical staining of paraffin-embedded Human lymphoma tissue using anti-CD274 (PD-L1) mouse monoclonal antibody. (Heat-induced epitope retrieval by 1mM EDTA in 10mM Tris buffer (pH9.0) at 120°C for 2.5 min, UM800120) (1:300)



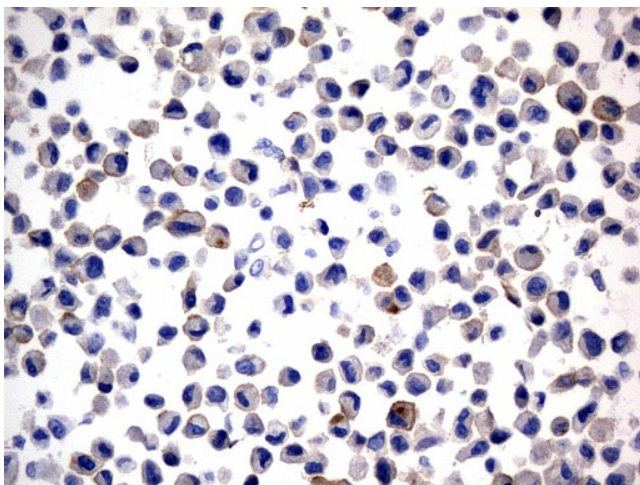
Immunohistochemical staining of paraffin-embedded Human tonsil within the normal limits using anti-CD274 (PD-L1) mouse monoclonal antibody. (Heat-induced epitope retrieval by 1mM EDTA in 10mM Tris buffer (pH9.0) at 120°C for 2.5 min, UM800120) (1:300)



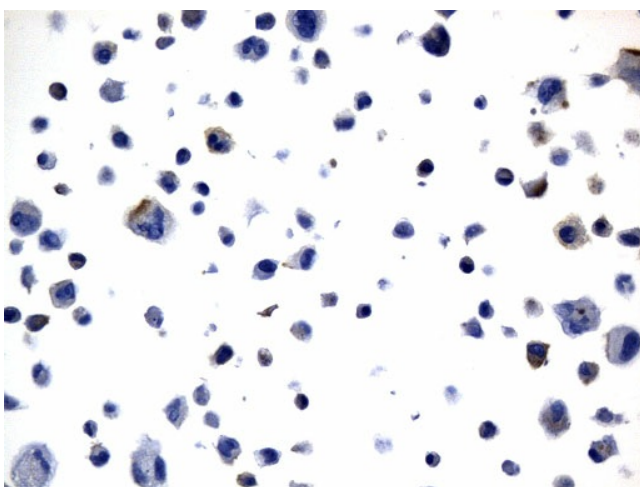
Immunohistochemical staining of paraffin-embedded Carcinoma of Human Esophagus using anti-CD274 (PD-L1) mouse monoclonal antibody. (Heat-induced epitope retrieval by 1mM EDTA in 10mM Tris buffer (pH9.0) at 120°C for 2.5 min, UM800120) (1:300)



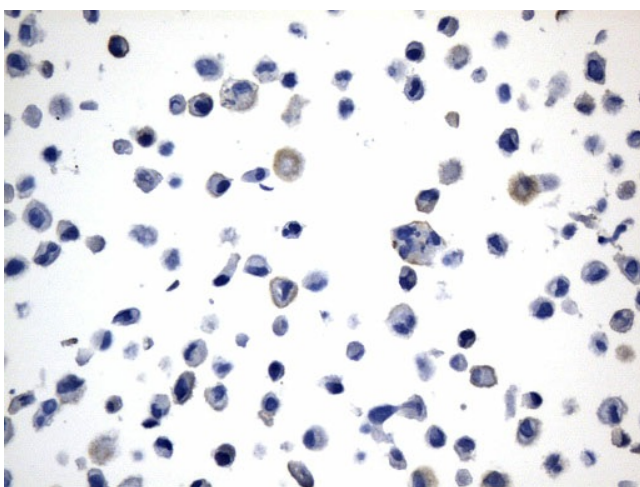
Immunohistochemical staining of paraffin-embedded MCF7 (PD-L1 Negative cell line) cell pellets using anti-CD274 (PD-L1) mouse monoclonal antibody (Heat-induced epitope retrieval by 1mM EDTA in 10mM Tris buffer (pH9.0) at 120°C for 2.5 min, UM800120) (1:300)



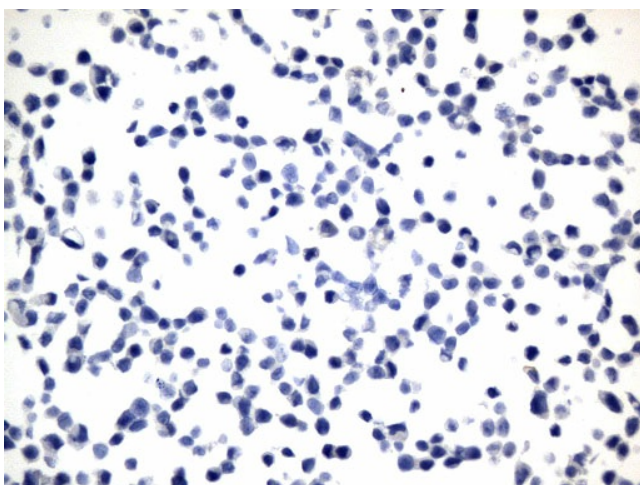
Immunohistochemical staining of paraffin-embedded NCI-H2228 cell pellets using anti-CD274 (PD-L1) mouse monoclonal antibody (Heat-induced epitope retrieval by 1mM EDTA in 10mM Tris buffer (pH9.0) at 120°C for 2.5 min, UM800120) (1:300)



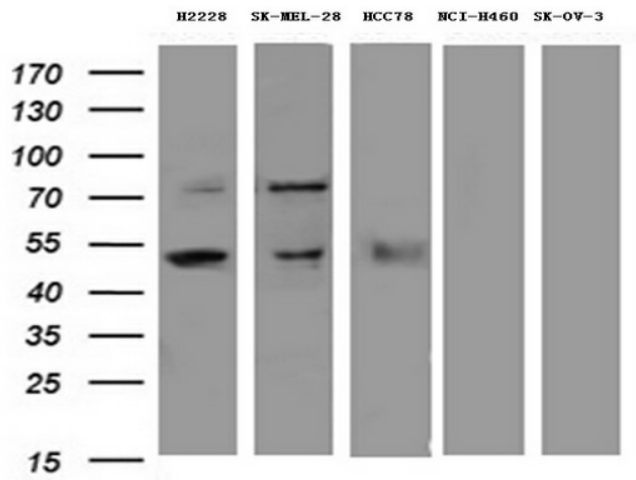
Immunohistochemical staining of paraffin-embedded MDA-MB-231 cell pellets using anti-CD274 (PD-L1) mouse monoclonal antibody (Heat-induced epitope retrieval by 1mM EDTA in 10mM Tris buffer (pH9.0) at 120°C for 2.5 min, UM800120) (1:300)



Immunohistochemical staining of paraffin-embedded SK-MEL-28 cell pellets using anti-CD274 (PD-L1) mouse monoclonal antibody (Heat-induced epitope retrieval by 1mM EDTA in 10mM Tris buffer (pH9.0) at 120°C for 2.5 min, UM800120) (1:300)



Immunohistochemical staining of paraffin-embedded LoVo (PD-L1 Negative cell line) cell pellets using anti-CD274 (PD-L1) mouse monoclonal antibody (Heat-induced epitope retrieval by 1mM EDTA in 10mM Tris buffer (pH9.0) at 120°C for 2.5 min, UM800120) (1:300)



Western blot analysis of extracts (35ug) from 5 different cancer cell lines by using anti-CD274 monoclonal antibody (1:500).