

## Product datasheet for **UM800119CF**

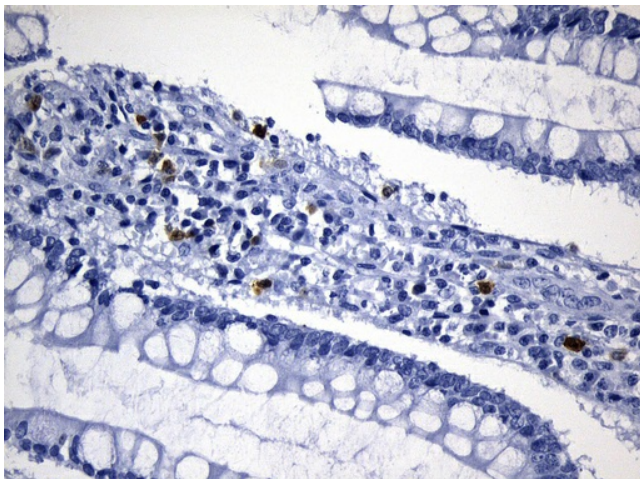
### Thymidylate Synthase (TYMS) Mouse Monoclonal Antibody [Clone ID: UMAB227]

#### Product data:

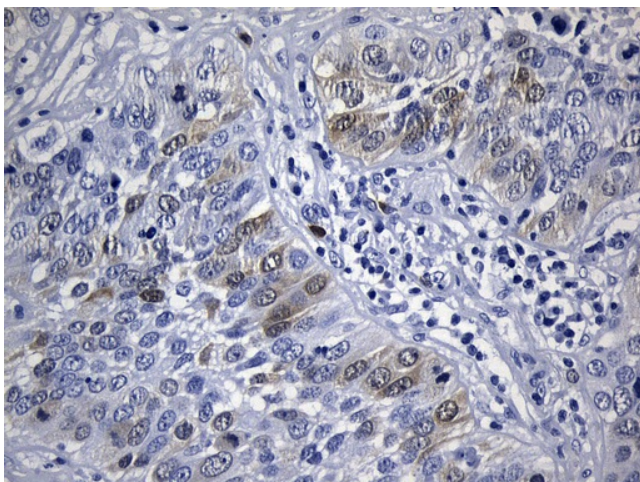
Product Type:	Primary Antibodies
Clone Name:	UMAB227
Applications:	IHC, WB
Recommended Dilution:	WB 1:500, IHC 1:200
Reactivity:	Human, Mouse, Rat
Host:	Mouse
Isotype:	IgG2a
Clonality:	Monoclonal
Immunogen:	Full length human recombinant protein of human TYMS (TS) (NP_001062) produced in E.coli.
Formulation:	Lyophilized powder (original buffer 1X PBS, pH 7.3, 8% trehalose)
Reconstitution Method:	For reconstitution, we recommend adding 100uL distilled water to a final antibody concentration of about 1 mg/mL. To use this carrier-free antibody for conjugation experiment, we strongly recommend performing another round of desalting process. (OriGene recommends Zeba Spin Desalting Columns, 7KMWCO from Thermo Scientific)
Purification:	Purified from mouse ascites fluids or tissue culture supernatant by affinity chromatography (protein A/G)
Conjugation:	Unconjugated
Storage:	Store at -20°C as received.
Stability:	Stable for 12 months from date of receipt.
Predicted Protein Size:	35.5 kDa
Gene Name:	thymidylate synthetase
Database Link:	<a href="#">NP_001062</a> <a href="#">Entrez Gene 22171 Mouse</a> <a href="#">Entrez Gene 29261 Rat</a> <a href="#">Entrez Gene 7298 Human</a> <a href="#">P04818</a>
Synonyms:	HST422; TMS; TS
Protein Families:	Druggable Genome
Protein Pathways:	Metabolic pathways, One carbon pool by folate, Pyrimidine metabolism



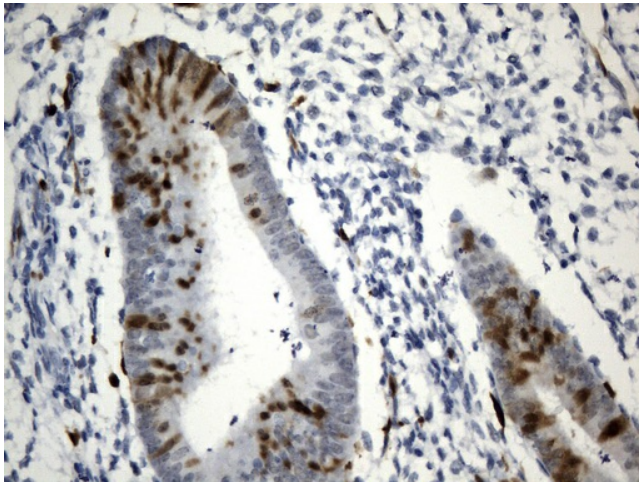
[View online »](#)

**Product images:**

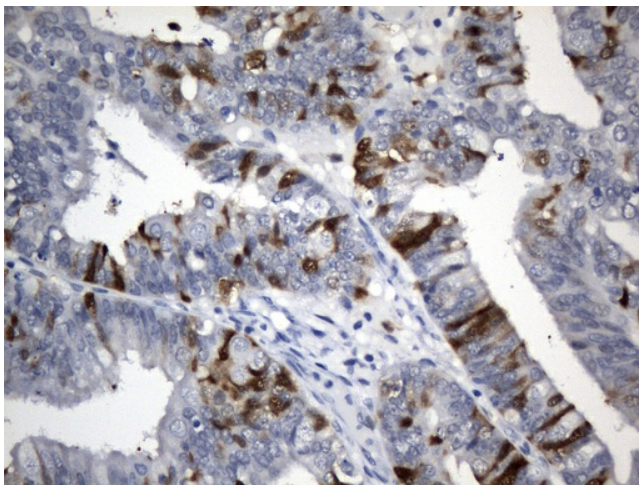
Immunohistochemical staining of paraffin-embedded Human colon tissue within the normal limits using anti-TYMS (TS) mouse monoclonal antibody. (Heat-induced epitope retrieval by 1mM EDTA in 10mM Tris buffer (pH8.5) at 120°C for 3min, [UM800119]) (1:200)



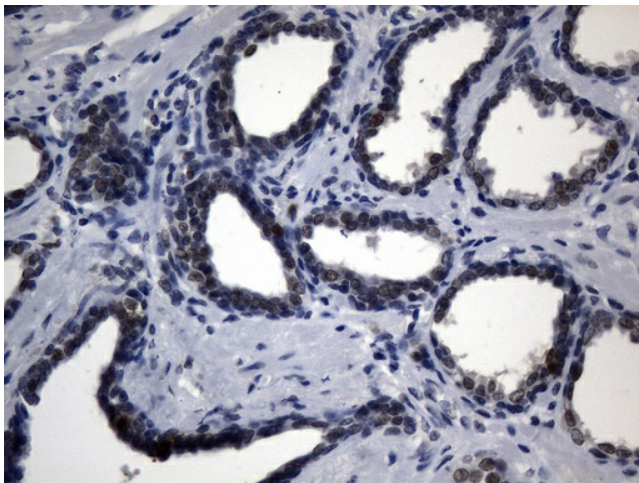
Immunohistochemical staining of paraffin-embedded Carcinoma of Human lung tissue using anti-TYMS (TS) mouse monoclonal antibody. (Heat-induced epitope retrieval by 1mM EDTA in 10mM Tris buffer (pH8.5) at 120°C for 3min, [UM800119]) (1:200)



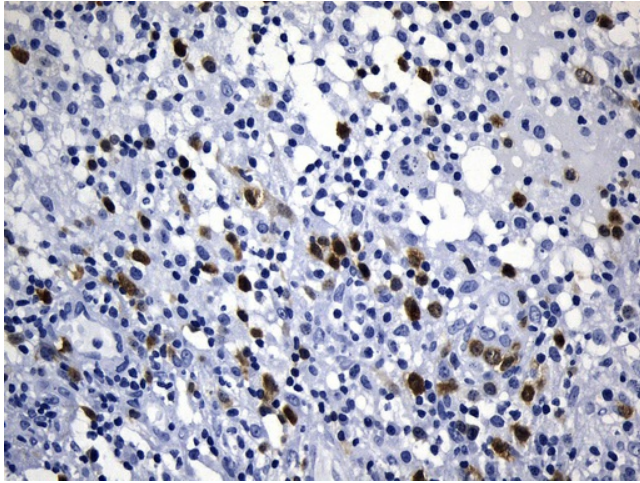
Immunohistochemical staining of paraffin-embedded Human endometrium tissue within the normal limits using anti-TYMS (TS) mouse monoclonal antibody. (Heat-induced epitope retrieval by 1mM EDTA in 10mM Tris buffer (pH8.5) at 120°C for 3min, [UM800119]) (1:200)



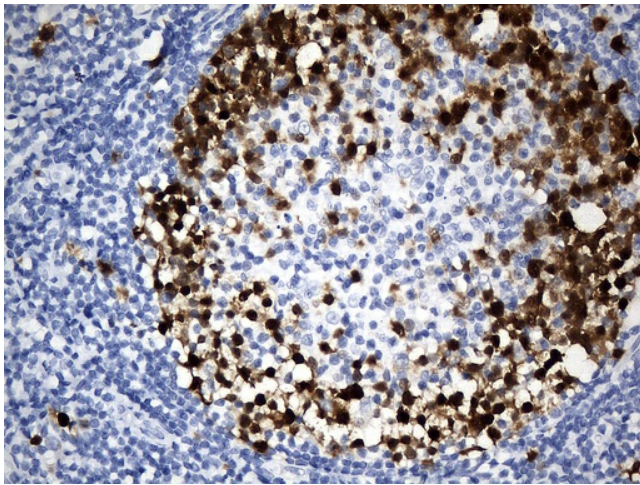
Immunohistochemical staining of paraffin-embedded Adenocarcinoma of Human endometrium tissue using anti-TYMS (TS) mouse monoclonal antibody. (Heat-induced epitope retrieval by 1mM EDTA in 10mM Tris buffer (pH8.5) at 120°C for 3min, [UM800119]) (1:200)



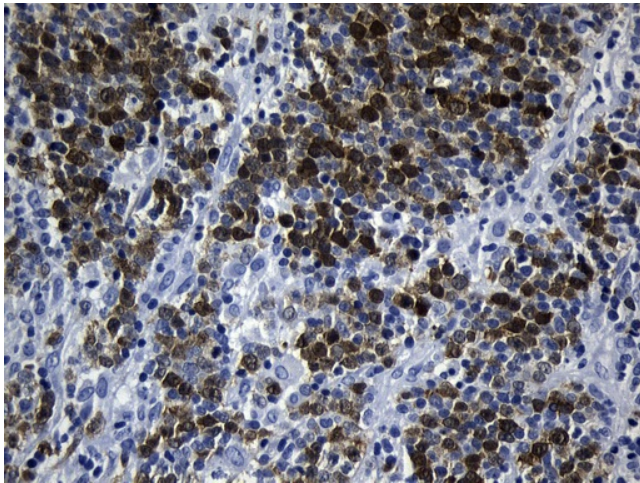
Immunohistochemical staining of paraffin-embedded Human prostate tissue within the normal limits using anti-TYMS (TS) mouse monoclonal antibody. (Heat-induced epitope retrieval by 1mM EDTA in 10mM Tris buffer (pH8.5) at 120°C for 3min, [UM800119]) (1:200)



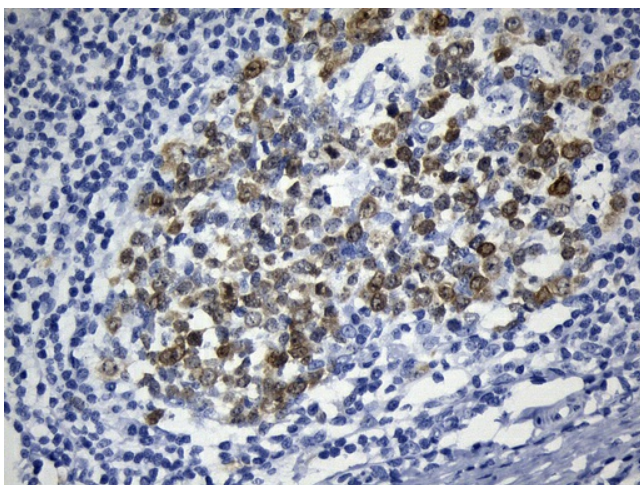
Immunohistochemical staining of paraffin-embedded Carcinoma of Human bladder tissue using anti-TYMS (TS) mouse monoclonal antibody. (Heat-induced epitope retrieval by 1mM EDTA in 10mM Tris buffer (pH8.5) at 120°C for 3min, [UM800119]) (1:200)



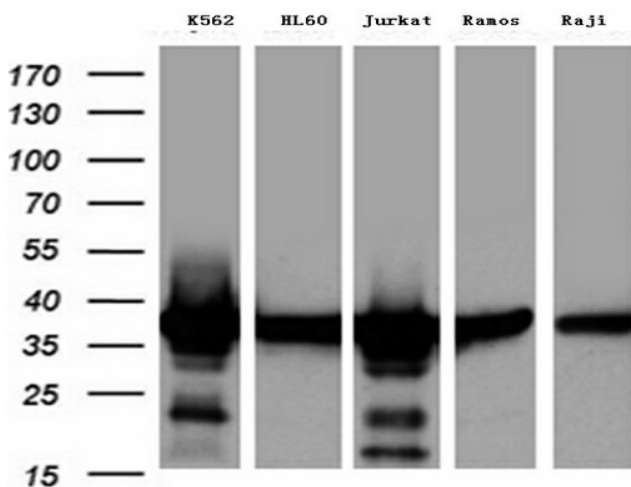
Immunohistochemical staining of paraffin-embedded Human lymph node tissue within the normal limits using anti-TYMS (TS) mouse monoclonal antibody. (Heat-induced epitope retrieval by 1mM EDTA in 10mM Tris buffer (pH8.5) at 120°C for 3min, [UM800119]) (1:200)



Immunohistochemical staining of paraffin-embedded Human lymphoma tissue using anti-TYMS (TS) mouse monoclonal antibody. (Heat-induced epitope retrieval by 1mM EDTA in 10mM Tris buffer (pH8.5) at 120°C for 3min, [UM800119]) (1:200)



Immunohistochemical staining of paraffin-embedded Human tonsil within the normal limits using anti-TYMS (TS) mouse monoclonal antibody. (Heat-induced epitope retrieval by 1mM EDTA in 10mM Tris buffer (pH8.5) at 120°C for 3min, [UM800119]) (1:200)



Western blot analysis of extracts (35ug) from 5 different cancer cell lines by using anti-TYMS (TS) monoclonal antibody (1:500).