

Product datasheet for **UM800115CF**

PD L2 (PDCD1LG2) Mouse Monoclonal Antibody [Clone ID: UMAB223]

Product data:

Product Type:	Primary Antibodies
Clone Name:	UMAB223
Applications:	10k-ChIP, FC, IHC, WB
Recommended Dilution:	IHC 1:100~500, FLOW 1:100
Reactivity:	Human
Host:	Mouse
Isotype:	IgG1
Clonality:	Monoclonal
Immunogen:	Full length human recombinant protein of human PDCD1LG2 (NP_079515) produced in HEK293T cell.
Formulation:	Lyophilized powder (original buffer 1X PBS, pH 7.3, 8% trehalose)
Reconstitution Method:	For reconstitution, we recommend adding 100uL distilled water to a final antibody concentration of about 1 mg/mL. To use this carrier-free antibody for conjugation experiment, we strongly recommend performing another round of desalting process. (OriGene recommends Zeba Spin Desalting Columns, 7KMWCO from Thermo Scientific)
Purification:	Purified from mouse ascites fluids or tissue culture supernatant by affinity chromatography (protein A/G)
Conjugation:	Unconjugated
Storage:	Store at -20°C as received.
Stability:	Stable for 12 months from date of receipt.
Predicted Protein Size:	30.8 kDa
Gene Name:	programmed cell death 1 ligand 2
Database Link:	NP_079515 Entrez Gene 80380 Human Q9BQ51
Background:	Involved in the costimulatory signal, essential for T-cell proliferation and IFNG production in a PDCD1-independent manner. Interaction with PDCD1 inhibits T-cell proliferation by blocking cell cycle progression and cytokine production. [UniProtKB/Swiss-Prot Function]



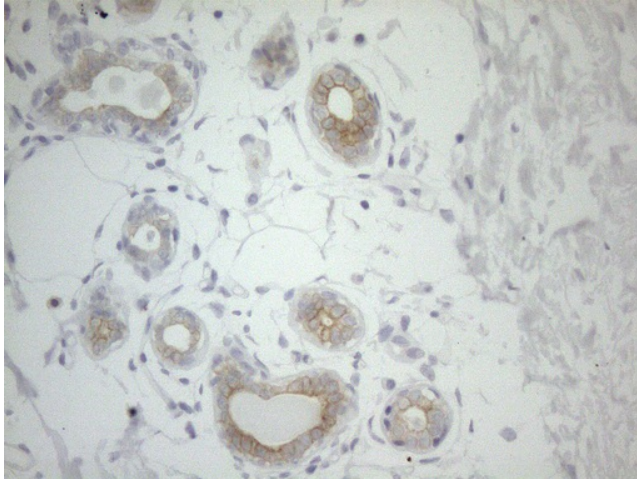
[View online »](#)

Synonyms: B7DC; bA574F11.2; Btdc; CD273; PD-L2; PDCD1L2; PDL2

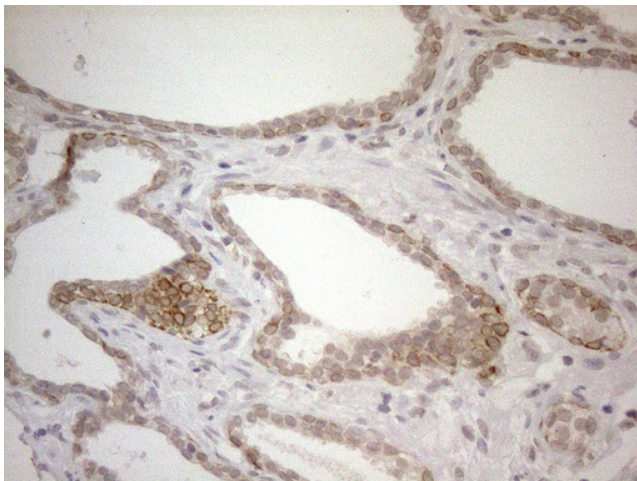
Protein Families: Transmembrane

Protein Pathways: Cell adhesion molecules (CAMs)

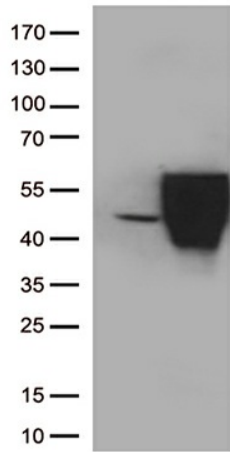
Product images:



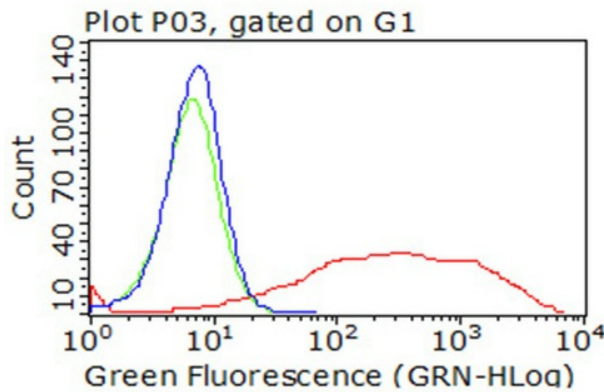
Immunohistochemical staining of paraffin-embedded Human breast tissue within the normal limits using anti-PDCD1LG2 mouse monoclonal antibody. (Heat-induced epitope retrieval by 1mM EDTA in 10mM Tris buffer (pH8.5) at 120°C for 2.5 min, [UM800115]) (1:500)



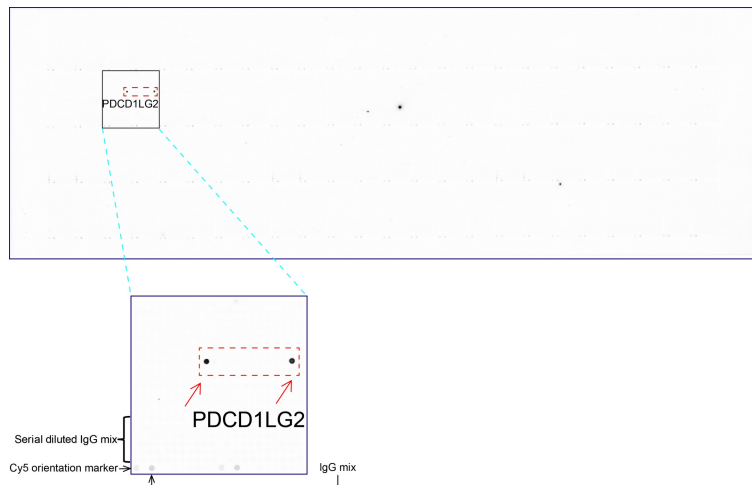
Immunohistochemical staining of paraffin-embedded Human prostate tissue within the normal limits using anti-PDCD1LG2 mouse monoclonal antibody. HIER pretreatment was done with 1mM EDTA in 10mM Tris buffer (pH8.0) at 120°C for 2.5 minutes. [UM800115] was diluted 1:500 and detection was done with HRP secondary and DAB chromogen. Cytoplasmic and membraneous staining seen in tumor cells.



HEK293T cells were transfected with the pCMV6-ENTRY control (Left lane) or pCMV6-ENTRY PDL2 ([RC224141], Right lane) cDNA for 48 hrs and lysed. Equivalent amounts of cell lysates (5 ug per lane) were separated by SDS-PAGE and immunoblotted with anti-PDL2 (1:1k)



Flow cytometric analysis of living 293T cells transfected with PDL2 overexpression plasmid ([RC224141], Red)/empty vector ([PS100001], Blue) using anti-PDL2 antibody ([UM800115]). Cells incubated with a non-specific antibody (Green) were used as isotype control (1:100).



OriGene overexpression protein microarray chip was immunostained with UltraMAB anti-PDCD1LG2 mouse monoclonal antibody ([UM800115]). The positive reactive proteins are highlighted with two red arrows in the enlarged subarray. All the positive controls spotted in this subarray are also labeled for clarification (1:100).