

## Product datasheet for **UM800112CF**

### **BOB1 (POU2AF1) Mouse Monoclonal Antibody [Clone ID: UMAB220]**

#### **Product data:**

<b>Product Type:</b>	Primary Antibodies
<b>Clone Name:</b>	UMAB220
<b>Applications:</b>	10k-ChIP, IHC
<b>Recommended Dilution:</b>	IHC 1:100
<b>Reactivity:</b>	Human, Mouse, Rat
<b>Host:</b>	Mouse
<b>Isotype:</b>	IgG1
<b>Clonality:</b>	Monoclonal
<b>Immunogen:</b>	Full length human recombinant protein of human POU2AF1(NP_006226) produced in E.coli.
<b>Formulation:</b>	Lyophilized powder (original buffer 1X PBS, pH 7.3, 8% trehalose)
<b>Reconstitution Method:</b>	For reconstitution, we recommend adding 100uL distilled water to a final antibody concentration of about 1 mg/mL. To use this carrier-free antibody for conjugation experiment, we strongly recommend performing another round of desalting process. (OriGene recommends Zeba Spin Desalting Columns, 7KMWCO from Thermo Scientific)
<b>Purification:</b>	Purified from mouse ascites fluids or tissue culture supernatant by affinity chromatography (protein A/G)
<b>Conjugation:</b>	Unconjugated
<b>Storage:</b>	Store at -20°C as received.
<b>Stability:</b>	Stable for 12 months from date of receipt.
<b>Predicted Protein Size:</b>	27.3 kDa
<b>Gene Name:</b>	POU class 2 homeobox associating factor 1
<b>Database Link:</b>	<a href="#">NP_006226</a> <a href="#">Entrez Gene 18985</a> <a href="#">MouseEntrez Gene 690528</a> <a href="#">RatEntrez Gene 5450</a> <a href="#">Human Q16633</a>

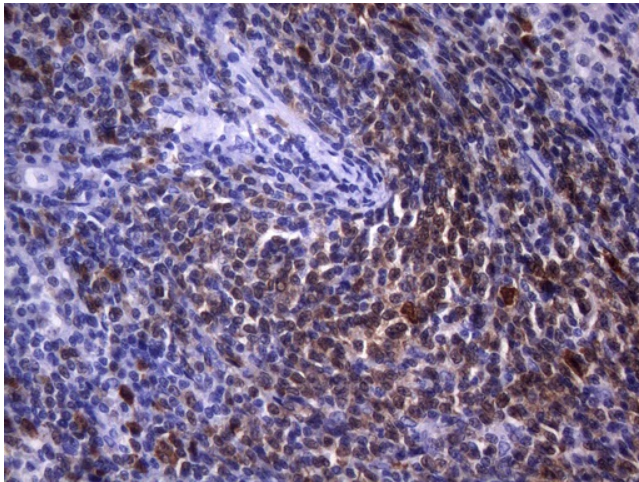


[View online »](#)

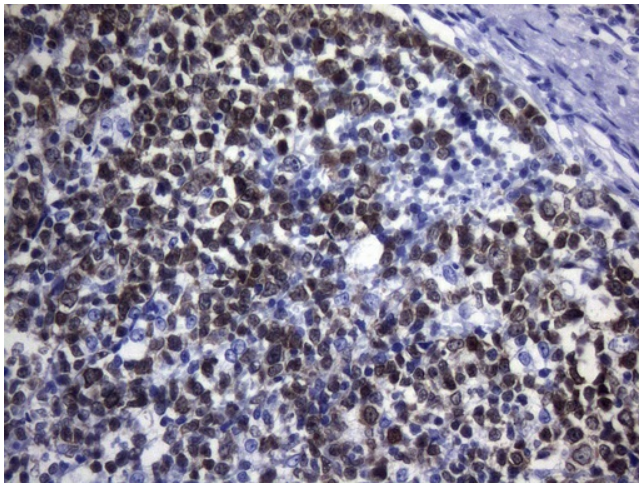
**Background:** Transcriptional coactivator that specifically associates with either OCT1 or OCT2. It boosts the OCT1 mediated promoter activity and to a lesser extent, that of OCT2. It has no intrinsic DNA-binding activity. It recognizes the POU domains of OCT1 and OCT2. It is essential for the response of B-cells to antigens and required for the formation of germinal centers. [UniProtKB/Swiss-Prot Function]

**Synonyms:** BOB1; OBF-1; OBF1; OCAB

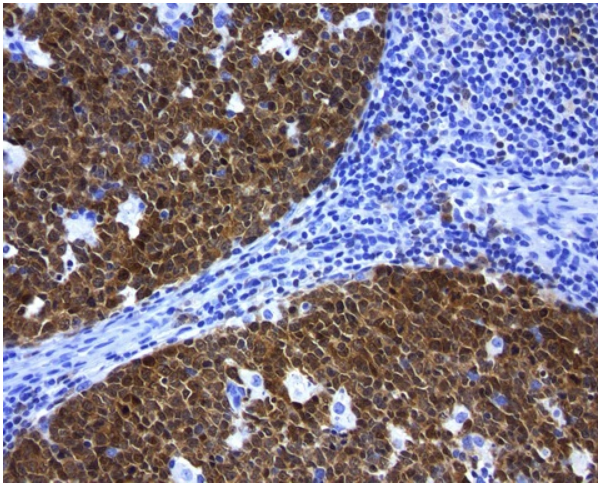
**Product images:**



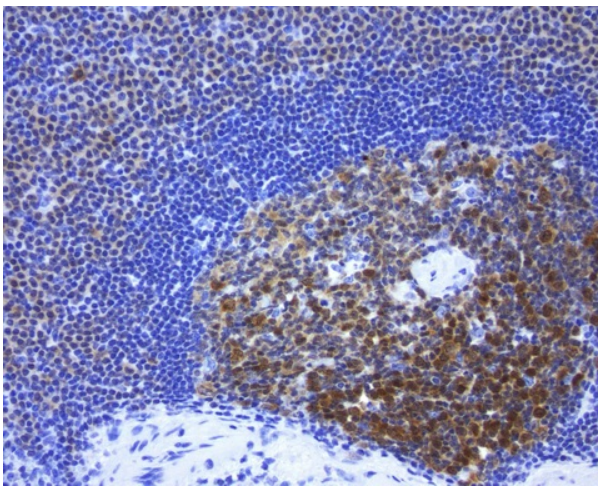
Immunohistochemical staining of paraffin-embedded human lymphoma tissue using anti-POU2AF1 mouse monoclonal antibody. HIER pretreatment was done with 1mM EDTA in 10mM Tris buffer (pH8.0) at 120°C for 2.5 minutes. [UM800112] was diluted 1:100 and detection was done with HRP secondary and DAB chromogen. Strong nuclear, cytoplasmic, and membrane staining tumor cells.



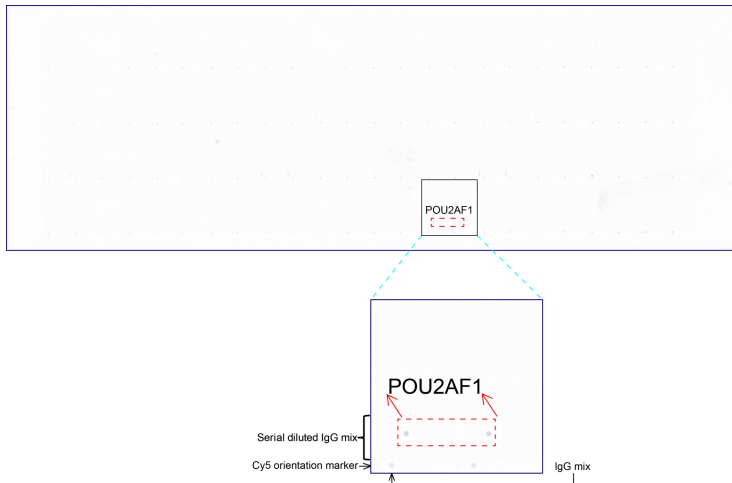
Immunohistochemical staining of paraffin-embedded Human tonsil within the normal limits using anti-POU2AF1 mouse monoclonal antibody. HIER pretreatment was done with 1mM EDTA in 10mM Tris buffer (pH8.0) at 120°C for 2.5 minutes. [UM800112] was diluted 1:100 and detection was done with HRP secondary and DAB chromogen. Strong nuclear, cytoplasmic, and membrane staining germinal cells of the tonsil.



Immunohistochemical staining of paraffin-embedded tonsil using mouse anti-POU2AF1 clone UMAB220 ([UM800112]) at 1:200 with Polink2 Broad HRP DAB detection kit; pretreatment of tissue prior to stain with heat-induced epitope retrieval with EDTA pH 8.0 buffer using pressure chamber for 3 minutes at 110C is required for optimal staining. Cells exhibit cytoplasmic and membranous staining.



Immunohistochemical staining of paraffin-embedded normal spleen using mouse anti-POU2AF1 clone UMAB220 ([UM800112]) at 1:200 with Polink2 Broad HRP DAB detection kit; pretreatment of tissue prior to stain with heat-induced epitope retrieval with EDTA pH 8.0 buffer using pressure chamber for 3 minutes at 110C is required for optimal staining. Cells exhibit cytoplasmic and membranous staining.



OriGene overexpression protein microarray chip was immunostained with UltraMAB anti-POU2AF1 mouse monoclonal antibody ([UM800112]). The positive reactive proteins are highlighted with two red arrows in the enlarged subarray. All the positive controls spotted in this subarray are also labeled for clarification (1:100).