

Product datasheet for **UM800110**

GATA3 Mouse Monoclonal Antibody [Clone ID: UMAB218]

Product data:

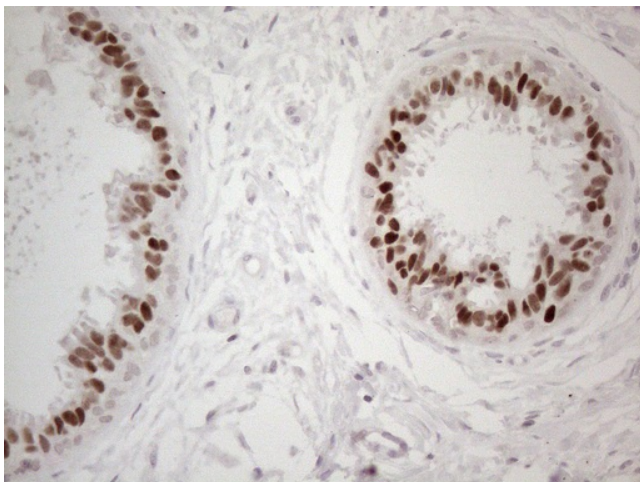
| | |
|-------------------------|--|
| Product Type: | Primary Antibodies |
| Clone Name: | UMAB218 |
| Applications: | 10k-ChIP, IF, IHC, WB |
| Recommended Dilution: | IHC 1:50~100, IF 1:2000 |
| Reactivity: | Human, Mouse, Rat |
| Host: | Mouse |
| Isotype: | IgG2b |
| Clonality: | Monoclonal |
| Immunogen: | Human recombinant protein fragment corresponding to amino acids 155-443 of human GATA3 (NP_002042) produced in E.coli. |
| Formulation: | PBS (pH 7.3) containing 1% BSA, 50% glycerol and 0.02% sodium azide. |
| Concentration: | 0.5~1.0 mg/ml (Lot Dependent) |
| Purification: | Purified from mouse ascites fluids or tissue culture supernatant by affinity chromatography (protein A/G) |
| Conjugation: | Unconjugated |
| Storage: | Store at -20°C as received. |
| Stability: | Stable for 12 months from date of receipt. |
| Predicted Protein Size: | 47.9 kDa |
| Gene Name: | GATA binding protein 3 |
| Database Link: | NP_001002295 Entrez Gene 14462 Mouse Entrez Gene 85471 Rat Entrez Gene 2625 Human P23771 |
| Background: | This gene encodes a protein which belongs to the GATA family of transcription factors. The protein contains two GATA-type zinc fingers and is an important regulator of T-cell development and plays an important role in endothelial cell biology. Defects in this gene are the cause of hypoparathyroidism with sensorineural deafness and renal dysplasia. [provided by RefSeq, Nov 2009] |


[View online »](#)

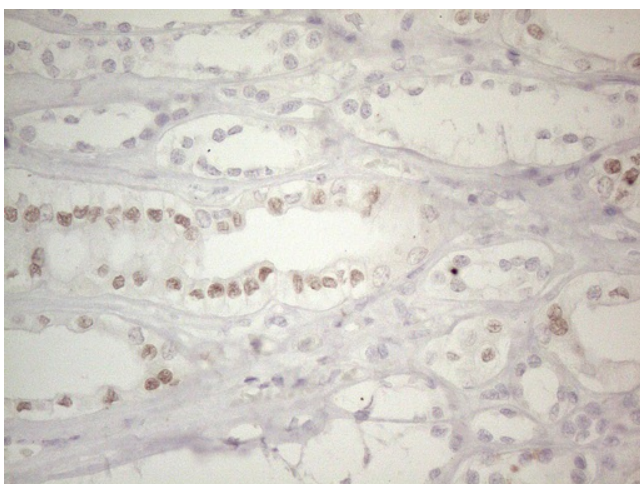
Synonyms: HDR; HDRS

Protein Families: Adult stem cells, ES Cell Differentiation/IPS, Stem cell relevant signaling - JAK/STAT signaling pathway, Transcription Factors

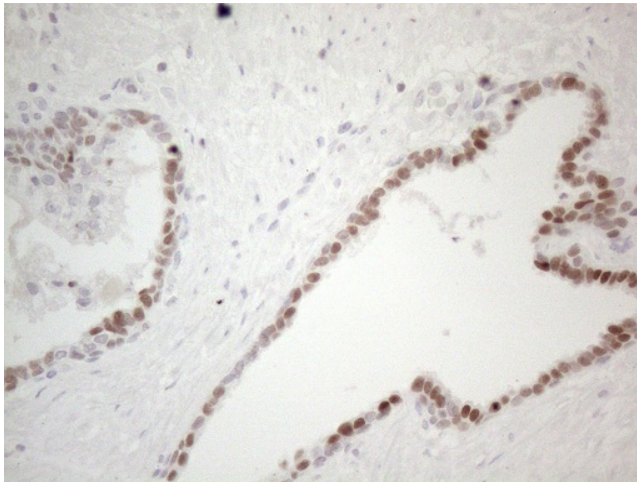
Product images:



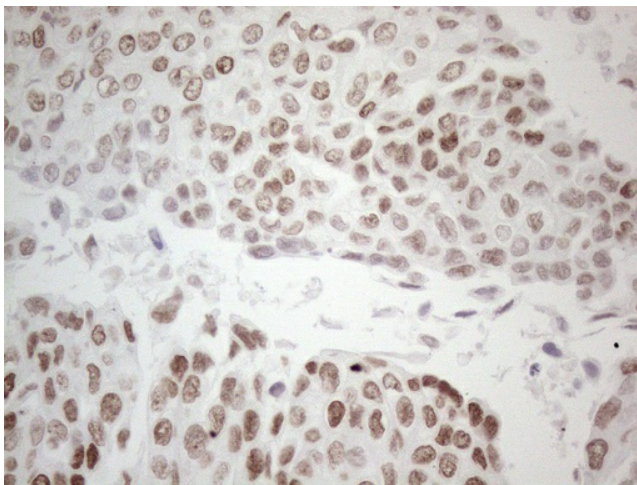
Immunohistochemical staining of paraffin-embedded at margins of adenocarcinoma of human breast tissue using anti-GATA3 mouse monoclonal antibody. HIER pretreatment was done with 1mM EDTA in 10mM Tris buffer (pH8.0) at 120°C for 2.5 minutes. UM800110 was diluted 1:50 and detection was done with HRP secondary and DAB chromogen. Strong nuclear stain is seen in the epithelial cells.



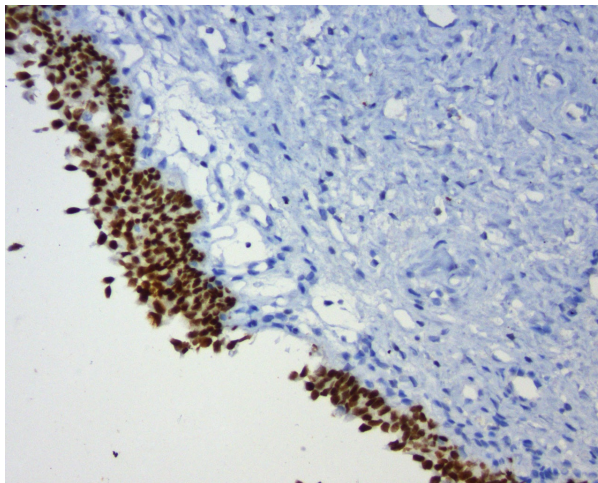
Immunohistochemical staining of paraffin-embedded human kidney tissue within the normal limits using anti-GATA3 mouse monoclonal antibody. HIER pretreatment was done with 1mM EDTA in 10mM Tris buffer (pH8.0) at 120°C for 2.5 minutes. UM800110 was diluted 1:50, detection was done with HRP secondary and DAB chromogen. Weak nuclear stain is seen in the tubule epithelial cells of the kidney.



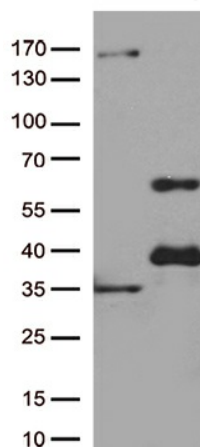
Immunohistochemical staining of paraffin-embedded carcinoma of human prostate tissue using anti-GATA3 mouse monoclonal antibody. HIER pretreatment was done with 1mM EDTA in 10mM Tris buffer (pH8.0) at 120°C for 2.5 minutes. UM800110 was diluted 1:50 and detection was done with HRP secondary and DAB chromogen. Strong nuclear stain was seen in the tumor cells.



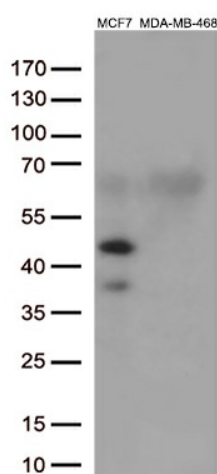
Immunohistochemical staining of paraffin-embedded human urothelial carcinoma using anti-GATA3 mouse monoclonal antibody. HIER pretreatment was done with 1mM EDTA in 10mM Tris buffer (pH8.0) at 120°C for 2.5 minutes. UM800110 was diluted 1:50 and detection was done with HRP secondary and DAB chromogen. Strong nuclear stain is seen in the tumor cells.



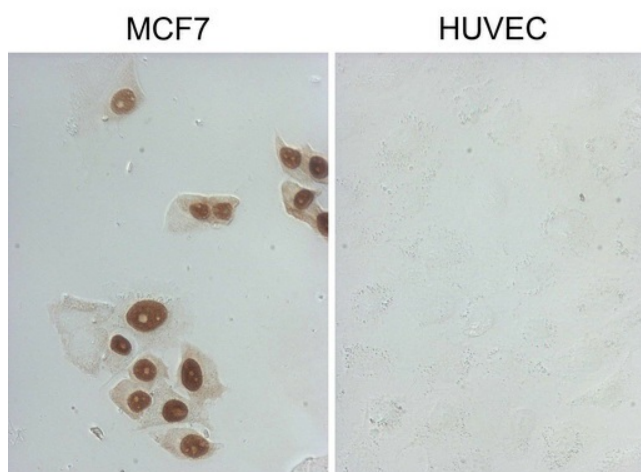
Immunohistochemical staining of paraffin-embedded human bladder cancer using anti-GATA3 clone UMAB210 at 1:200 dilution of 1 mg/mL and detection with Polink2 Broad HRP DAB. UM800110 requires heat-induced epitope retrieval with ACCEL (pH8.7) biocare pressure cooker at 110°C for 3minutes. The image shows nuclear staining in tumor cells.



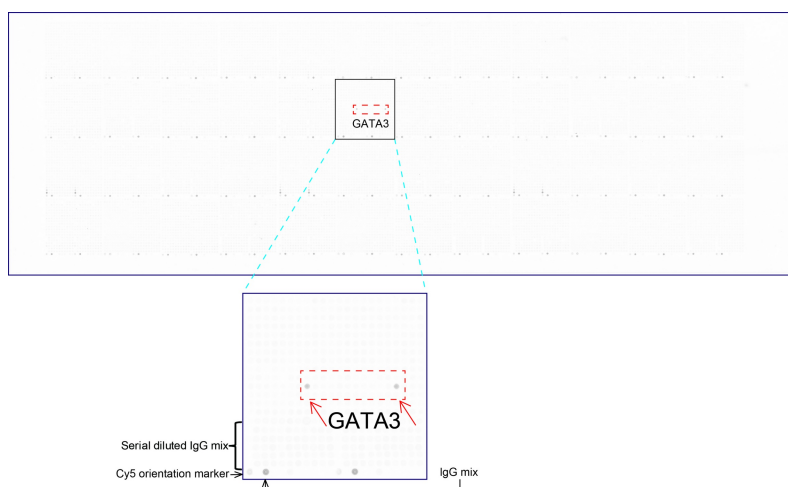
HEK293T cells were transfected with the pCMV6-ENTRY control (Left lane) or pCMV6-ENTRY GATA3 ([RC211904], Right lane) cDNA for 48 hrs and lysed. Equivalent amounts of cell lysates (5 ug per lane) were separated by SDS-PAGE and immunoblotted with anti-GATA3 (1:500).



Western blot analysis of extracts (35ug) from 2 different cell by using anti-GATA3 monoclonal antibody (1:500).



Immunocytochemistry staining of MCF-7 cells using anti-GATA3 mouse monoclonal antibody (UM800110) (Left). The right is negative control. (1:2000)



OriGene overexpression protein microarray chip was immunostained with UltraMAB anti-GATA3 mouse monoclonal antibody (UM800110). The positive reactive proteins are highlighted with two red arrows in the enlarged subarray. All the positive controls spotted in this subarray are also labeled for clarification (1:100).