

Product datasheet for **UM800103**

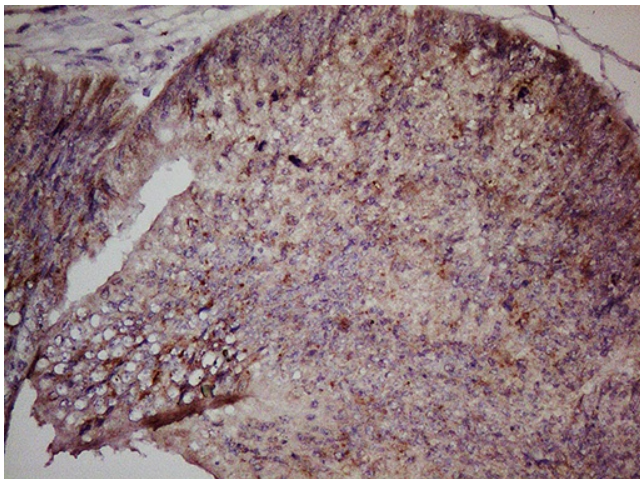
LGR5 Mouse Monoclonal Antibody [Clone ID: UMAB211]

Product data:

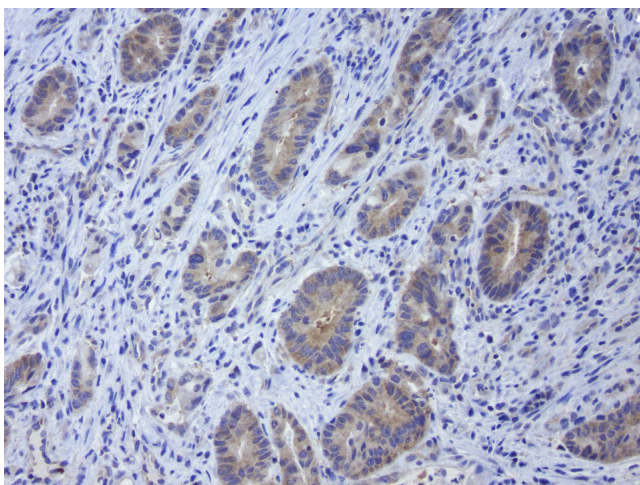
Product Type:	Primary Antibodies
Clone Name:	UMAB211
Applications:	10k-ChIP, FC, IF, IHC, WB
Recommended Dilution:	WB 1:200~2000, IHC 1:100~150 (recommended antigen retrieval buffer: TEE buffer pH 9.0), IF 1:100, FLOW 1:100
Reactivity:	Human, Mouse, Rat
Host:	Mouse
Isotype:	IgG2a
Clonality:	Monoclonal
Immunogen:	Human recombinant protein fragment corresponding to amino acids 22-543 of human LGR5 (NP_003658) produced in HEK293 cell.
Formulation:	PBS (pH 7.3) containing 1% BSA, 50% glycerol and 0.02% sodium azide.
Concentration:	0.5~1.0 mg/ml (Lot Dependent)
Purification:	Purified from mouse ascites fluids or tissue culture supernatant by affinity chromatography (protein A/G)
Conjugation:	Unconjugated
Storage:	Store at -20°C as received.
Stability:	Stable for 12 months from date of receipt.
Predicted Protein Size:	99.8 kDa
Gene Name:	leucine rich repeat containing G protein-coupled receptor 5
Database Link:	NP_003658 Entrez Gene 14160 MouseEntrez Gene 299802 RatEntrez Gene 8549 Human O75473
Synonyms:	FEX; GPR49; GPR67; GRP49; HG38
Protein Families:	Druggable Genome, GPCR, Transmembrane



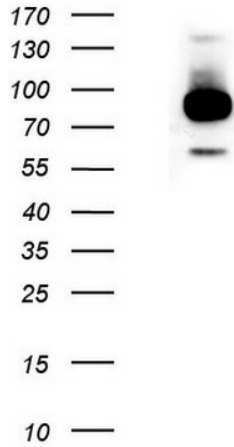
[View online »](#)

Product images:

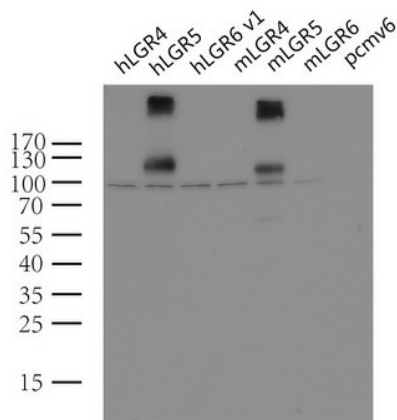
Immunohistochemical staining of paraffin-embedded Adenocarcinoma of Human colon tissue using anti-LGR5 mouse monoclonal antibody. (Heat-induced epitope retrieval by 1mM EDTA in 10mM Tris buffer (pH8.5) at 110°C for 10min, UM800103) (1:150)



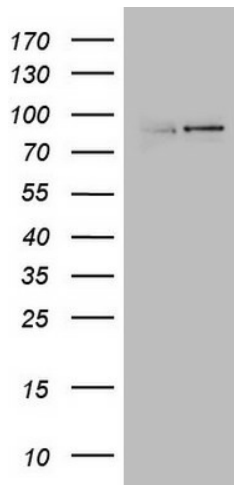
Immunohistochemical staining of paraffin-embedded human colon cancer using mouse anti-LGR5 clone UMAB211 ([UM800104]) at 1:400 with GBI Polink2 Broad HRP DAB detection kit ([D22-110]); pretreatment of tissue prior to stain with heat-induced epitope retrieval buffer from GBI Labs TEE pH 9.0 ([B21-100]) using pressure chamber for 3 minutes at 110C is required for optimal staining. Shown here strong cytoplasmic tumor cells.



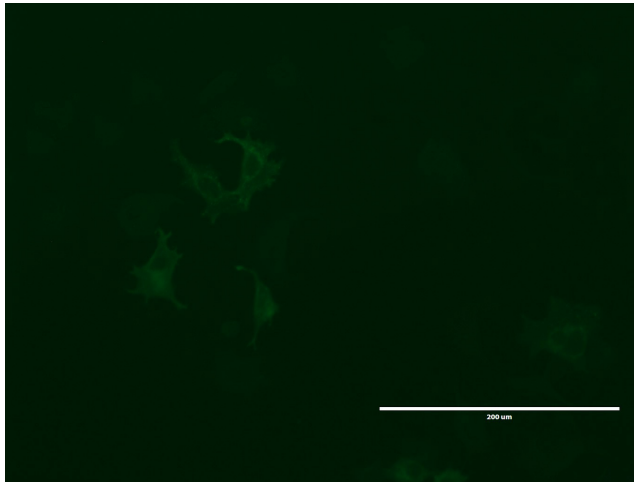
NIH-3T3 (Left lane) or stable expressed LGR5-3T3 ([RC212825], Right lane) cell lysates (5 ug per lane) were separated by SDS-PAGE and immunoblotted with anti-LGR5 (1:1000).



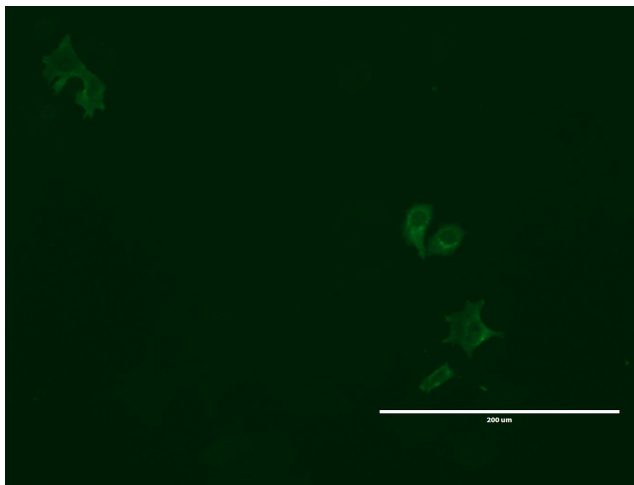
Western blot analysis of extracts (10ug) from 7 different transiently transfected HEK293T cell lysates by using anti-LGR5 monoclonal antibody (1:2000). (Lanes: control vector pCMV6-Entry ([PS100001]); human LGR4 ([RC221345]), LGR5 ([RC212825]) and LGR6 ([RC219284]); or mouse LGR4 ([MR219497]), LGR5 ([MR219702]) and LGR6 ([MR224646]))



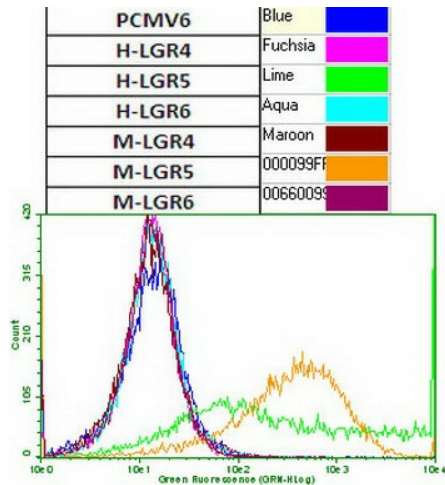
Western blot analysis of extracts (15ug) from 2 Human tissue by using anti-LGR5 monoclonal antibody (left lane: Brain right lane: Testis) (1:200).



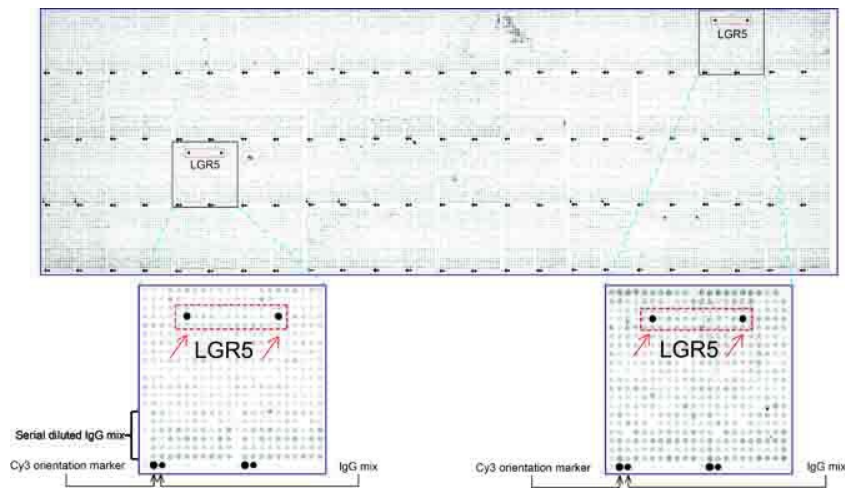
Anti-LGR5 mouse monoclonal antibody (UM800103) immunofluorescent staining of MCF7 cells transiently transfected by pCMV6-ENTRY human LGR5 ([RC212825]) (1:100).



Anti-LGR5 mouse monoclonal antibody (UM800103) immunofluorescent staining of MCF7 cells transiently transfected by pCMV6-ENTRY mouse LGR5 ([MR219702]) (1:100).



Flow cytometric analysis of HEK293T cells transiently transfected with human LGR4 ([RC221345]) or mouse LGR4 ([MR219497]), human LGR5 ([RC212825]) or mouse LGR5 ([MR219702]), human LGR6 ([RC219284]) or mouse LGR6 ([MR224646]), or control vector pCMV6-Entry ([PS100001]), using anti-LGR5 antibody (UM800103, 1:100) surface stained on live cells.



OriGene overexpression protein microarray chip was immunostained with UltraMAB anti-LGR5 mouse monoclonal antibody (UM800103) at 1:100. The positive reactive proteins are highlighted with two red arrows in the enlarged subarray. All the positive controls spotted in this subarray are also labeled for clarification.