

## Product datasheet for **UM800099**

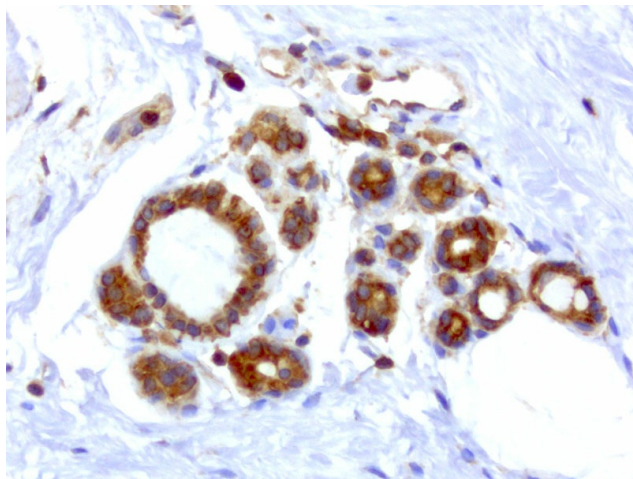
### WIBG (PYM1) Mouse Monoclonal Antibody [Clone ID: UMAB207]

#### Product data:

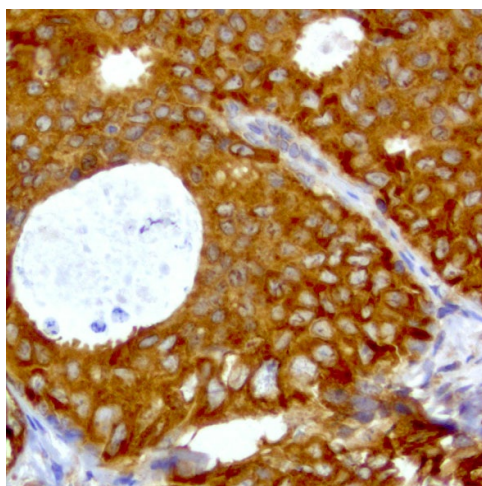
Product Type:	Primary Antibodies
Clone Name:	UMAB207
Applications:	10k-ChIP, IF, IHC, WB
Recommended Dilution:	IHC 1:100~500
Reactivity:	Human
Host:	Mouse
Isotype:	IgG1
Clonality:	Monoclonal
Immunogen:	Full length human recombinant protein of human WIBG (NP_115721) produced in HEK293T cell.
Formulation:	PBS (pH 7.3) containing 1% BSA, 50% glycerol and 0.02% sodium azide.
Concentration:	0.5~1.0 mg/ml (Lot Dependent)
Purification:	Purified from mouse ascites fluids or tissue culture supernatant by affinity chromatography (protein A/G)
Conjugation:	Unconjugated
Storage:	Store at -20°C as received.
Stability:	Stable for 12 months from date of receipt.
Predicted Protein Size:	22.5 kDa
Gene Name:	PYM homolog 1, exon junction complex associated factor
Database Link:	<a href="#">NP_115721</a> <a href="#">Entrez Gene 84305 Human</a> <a href="#">Q9BRP8</a>
Background:	WIBG (within bgcn homolog (Drosophila)) is a protein-coding gene. Diseases associated with WIBG include mucoepidermoid carcinoma, and tongue cancer. GO annotations related to this gene include ribosome binding and RNA binding.
Synonyms:	PYM; WIBG



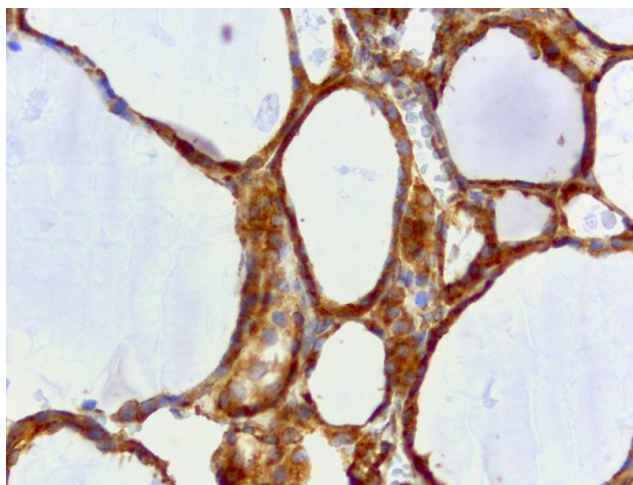
[View online »](#)

**Product images:**

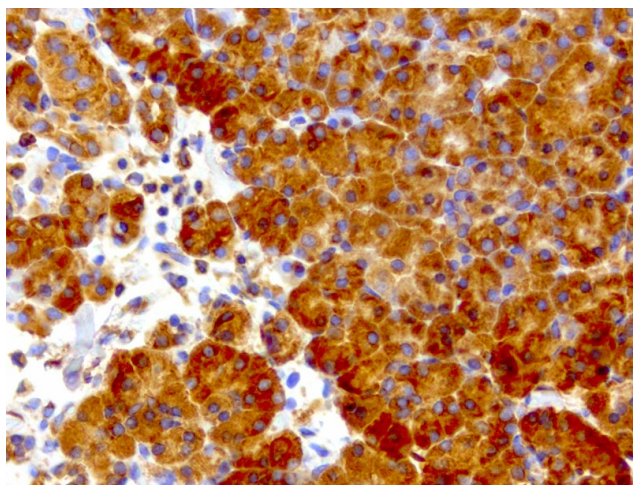
Immunohistochemical staining of paraffin-embedded normal/normal adjacent breast with mouse anti-WIBG clone UMAB207 1:400 of 1mg/mL using HIER TEE pH9.0 [GBI Labs B21-Tris/EDTA HIER]. Expression of WIBG is cytoplasmic and some nuclear in normal/normal adjacent breast tissue.



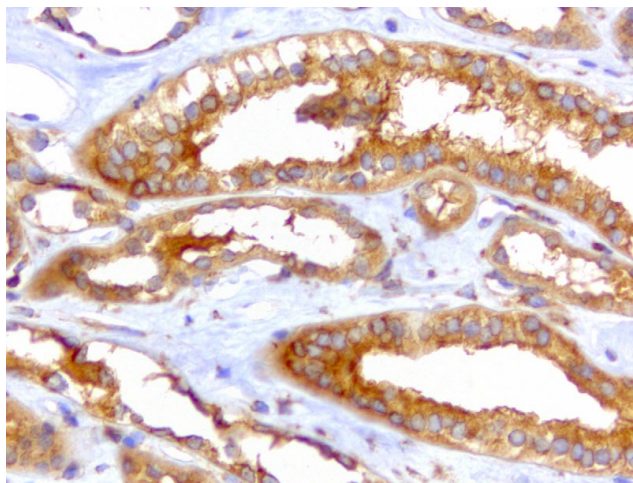
Immunohistochemical staining of paraffin-embedded breast carcinoma with mouse anti-WIBG clone UMAB207 1:400 of 1mg/mL using HIER TEE pH9.0 [GBI Labs B21-Tris/EDTA HIER]. Expression of WIBG is cytoplasmic.



Immunohistochemical staining of paraffin-embedded thyroid with mouse anti-WIBG clone UMAB207 1:400 of 1mg/mL using HIER TEE pH9.0 [GBI Labs B21-Tris/EDTA HIER]. Expression of WIBG is cytoplasmic.

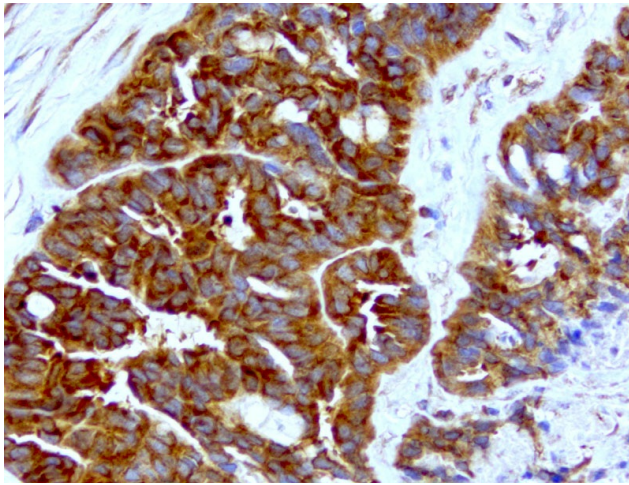


Immunohistochemical staining of paraffin-embedded pancreas with mouse anti-WIBG clone UMAB207 1:400 of 1mg/mL using HIER TEE pH9.0 [GBI Labs B21-Tris/EDTA HIER]. Expression of WIBG is cytoplasmic.

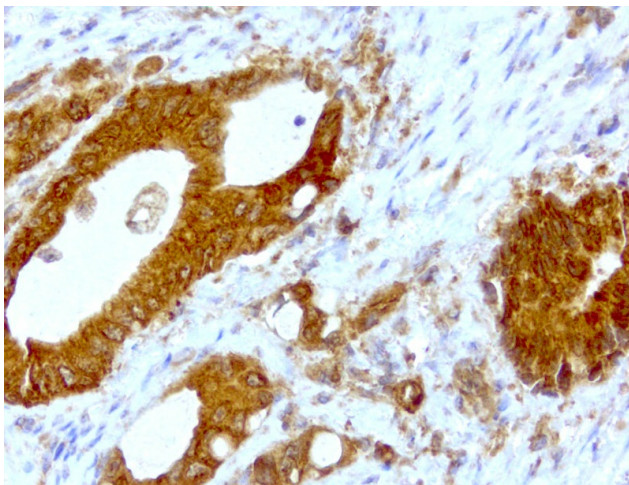


Immunohistochemical staining of paraffin-embedded kidney with mouse anti-WIBG clone UMAB207 1:400 of 1mg/mL using HIER TEE pH9.0 [GBI Labs B21-Tris/EDTA HIER]. Expression of WIBG is cytoplasmic.

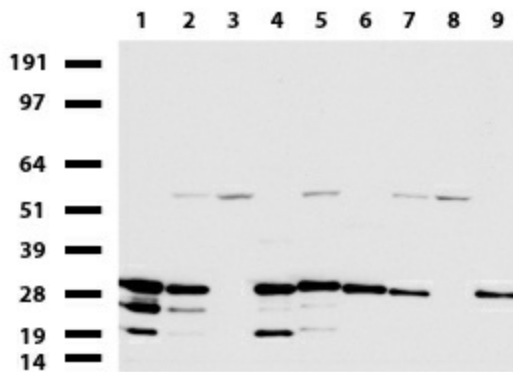




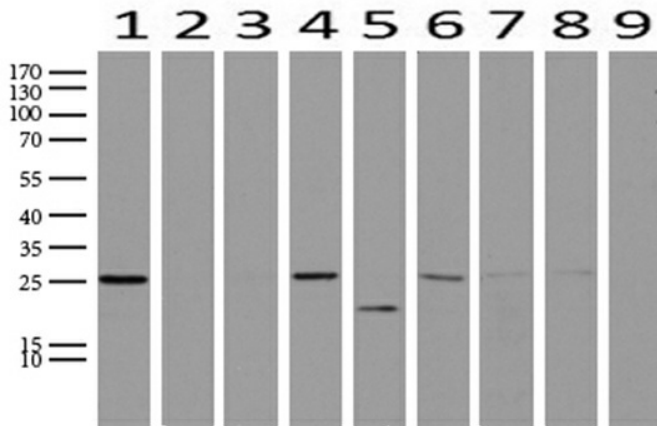
Immunohistochemical staining of paraffin-embedded ovarian cancer with mouse anti-WIBG clone UMAB207 1:400 of 1mg/mL using HIER TEE pH9.0 [GBI Labs B21-Tris/EDTA HIER]. Expression of WIBG is cytoplasmic.



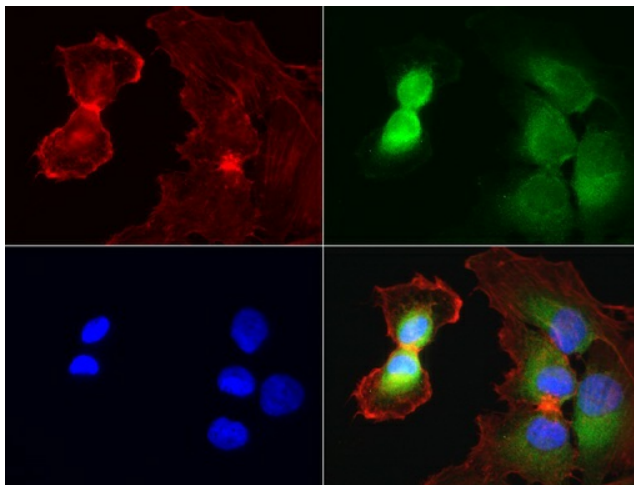
Immunohistochemical staining of paraffin-embedded colon cancer with mouse anti-WIBG clone UMAB207 1:400 of 1mg/mL using HIER TEE pH9.0 [GBI Labs B21-Tris/EDTA HIER]. Expression of WIBG is cytoplasmic.



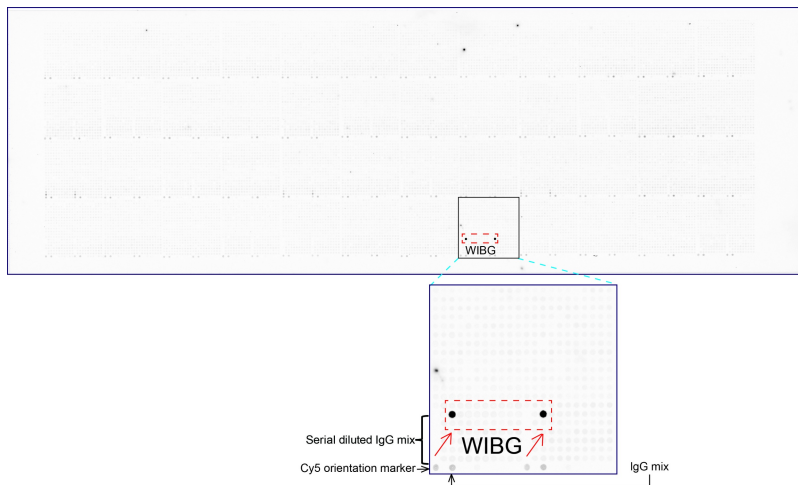
Western blot of cell lysates (35ug) from 9 different cell lines (1: HepG2, 2: HeLa, 3: SV-T2, 4: A549, 5: COS7, 6: Jurkat, 7: MDCK, 8: PC-12, 9: MCF7).



Western blot analysis of extracts (15ug) from 9 Human tissue by using anti-WIBG monoclonal antibody (1: Testis; 2: Uterus; 3: Breast; 4: Brain; 5: Liver; 6: Ovary; 7: Thyroid gland; 8: colon;;9:Spleen). (1:500 Dilution: 1:500)



Immunofluorescent staining of HeLa cells using anti-WIBG mouse monoclonal antibody (UM800099, green, 1:100). Actin filaments were labeled with Alexa Fluor® 594 Phalloidin (red), and nuclear with DAPI (blue).



OriGene overexpression protein microarray chip was immunostained with UltraMAB anti-WIBG mouse monoclonal antibody (UM800099). The positive reactive proteins are highlighted with two red arrows in the enlarged subarray. All the positive controls spotted in this subarray are also labeled for clarification (1:100).