

Product datasheet for **UM800092CF**

PROCR Mouse Monoclonal Antibody [Clone ID: UMAB200]

Product data:

Product Type:	Primary Antibodies
Clone Name:	UMAB200
Applications:	10k-ChIP, IHC, WB
Recommended Dilution:	IHC 1:100~200
Reactivity:	Human
Host:	Mouse
Isotype:	IgG2a
Clonality:	Monoclonal
Immunogen:	Human recombinant protein fragment corresponding to amino acids 1-210 of human PROCR (NP_006395) produced in HEK293T cell.
Formulation:	Lyophilized powder (original buffer 1X PBS, pH 7.3, 8% trehalose)
Reconstitution Method:	For reconstitution, we recommend adding 100uL distilled water to a final antibody concentration of about 1 mg/mL. To use this carrier-free antibody for conjugation experiment, we strongly recommend performing another round of desalting process. (OriGene recommends Zeba Spin Desalting Columns, 7KMWCO from Thermo Scientific)
Purification:	Purified from mouse ascites fluids or tissue culture supernatant by affinity chromatography (protein A/G)
Conjugation:	Unconjugated
Storage:	Store at -20°C as received.
Stability:	Stable for 12 months from date of receipt.
Predicted Protein Size:	24.7 kDa
Gene Name:	protein C receptor
Database Link:	NP_006395 Entrez Gene 10544 Human Q9UNN8



[View online »](#)

Background:

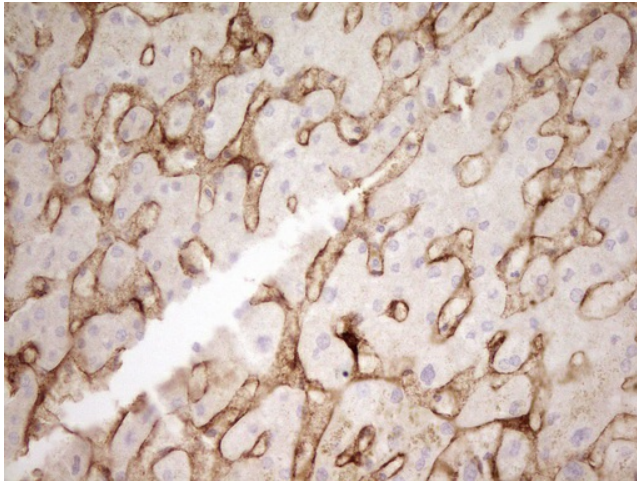
The protein encoded by this gene is a receptor for activated protein C, a serine protease activated by and involved in the blood coagulation pathway. The encoded protein is an N-glycosylated type I membrane protein that enhances the activation of protein C. Mutations in this gene have been associated with venous thromboembolism and myocardial infarction, as well as with late fetal loss during pregnancy. The encoded protein may also play a role in malarial infection and has been associated with cancer. [provided by RefSeq, Jul 2013]

Synonyms:

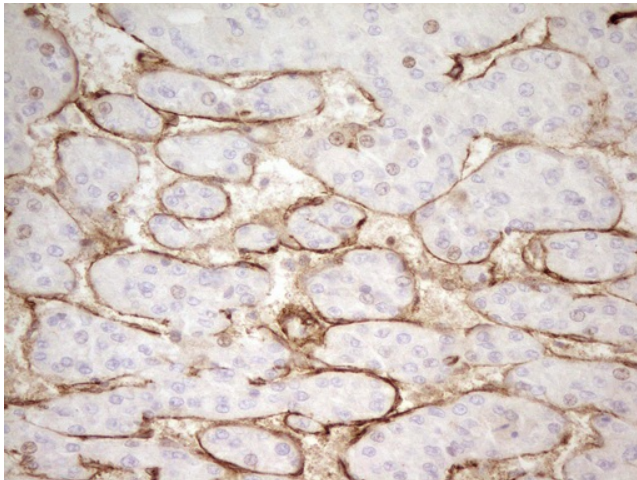
CCCA; CCD41; EPCR

Protein Families:

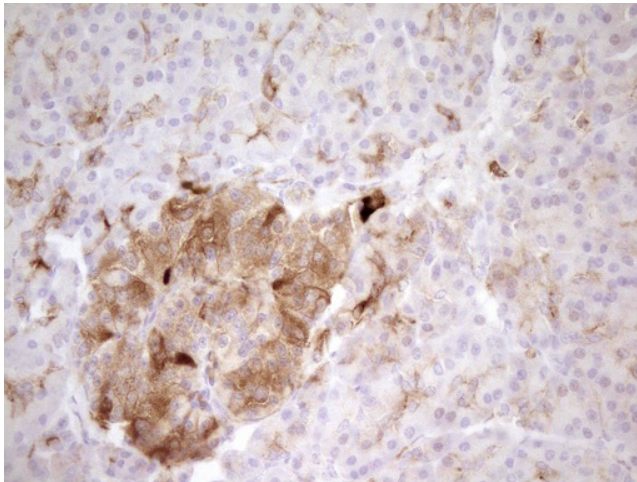
Druggable Genome, ES Cell Differentiation/IPS, Transmembrane

Product images:

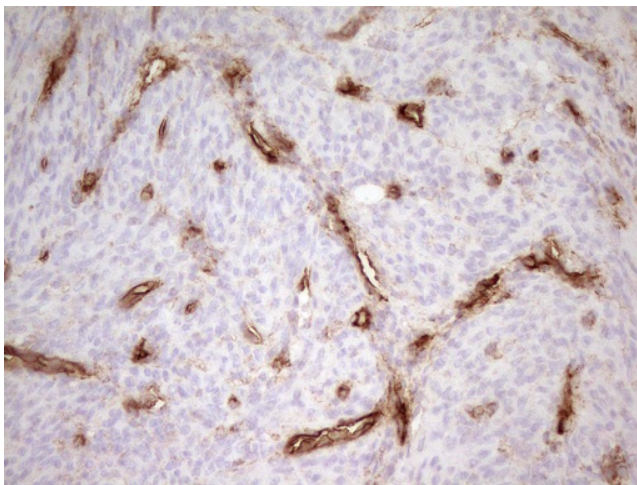
Immunohistochemical staining of paraffin-embedded Human liver tissue using anti-PROCR mouse monoclonal antibody. (Heat-induced epitope retrieval by 1mM EDTA in 10mM Tris buffer (pH8.0) at 120°C for 3min, [UM800092]) (1:200)



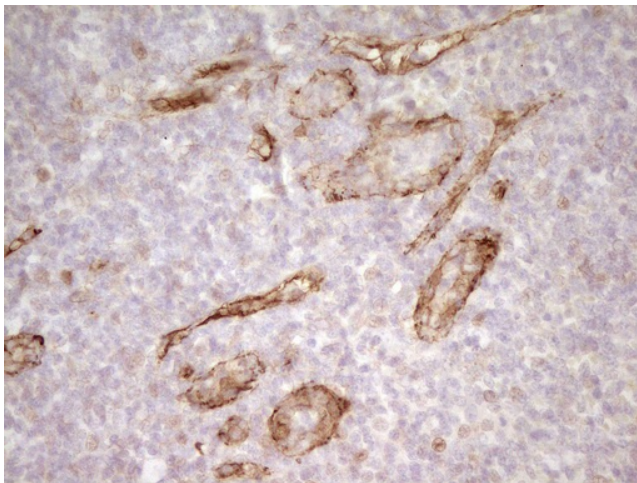
Immunohistochemical staining of paraffin-embedded Carcinoma of Human liver tissue using anti-PROCR mouse monoclonal antibody. (Heat-induced epitope retrieval by 1mM EDTA in 10mM Tris buffer (pH8.0) at 120°C for 3min, [UM800092]) (1:200)



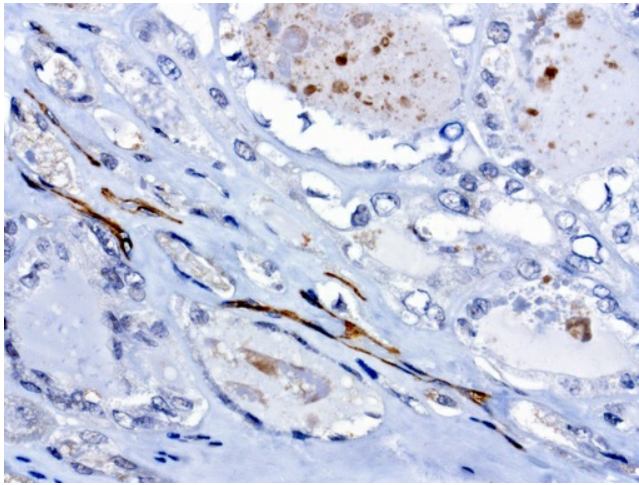
Immunohistochemical staining of paraffin-embedded Human pancreas tissue using anti-PROCR mouse monoclonal antibody. (Heat-induced epitope retrieval by 1mM EDTA in 10mM Tris buffer (pH8.0) at 120°C for 3min, [UM800092]) (1:200)



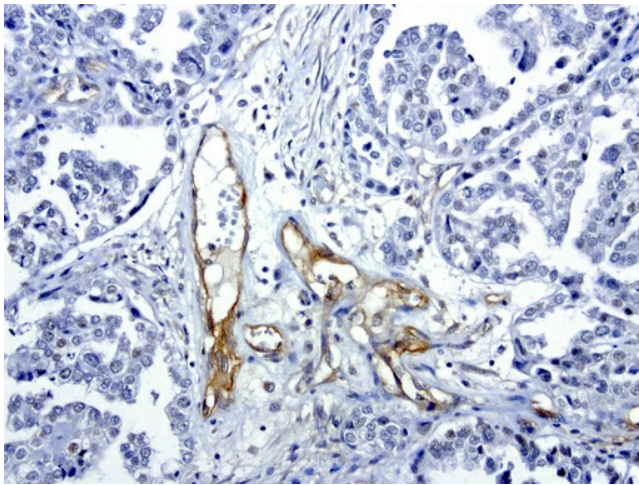
Immunohistochemical staining of paraffin-embedded Human endometrium tissue using anti-PROCR mouse monoclonal antibody. (Heat-induced epitope retrieval by 1mM EDTA in 10mM Tris buffer (pH8.0) at 120°C for 3min, [UM800092]) (1:200)



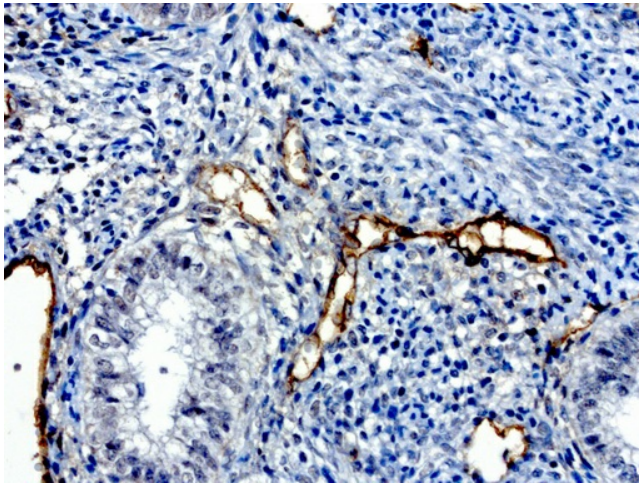
Immunohistochemical staining of paraffin-embedded Human tonsil using anti-PROCR mouse monoclonal antibody. (Heat-induced epitope retrieval by 1mM EDTA in 10mM Tris buffer (pH8.0) at 120°C for 3min, [UM800092]) (1:200)



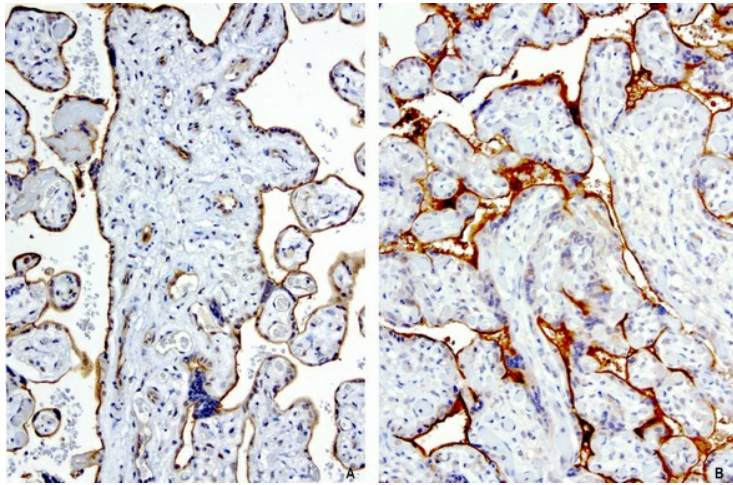
Immunohistochemical staining of paraffin-embedded human thyroid cancer using anti-PROCR clone UMAB200 mouse monoclonal antibody ([UM800092]) at 1:100 with Polink2 Broad HRP DAB detection kit; heat-induced epitope retrieval with GBI citrate pH6.0 HIER buffer using pressure chamber for 3 minutes at 110C. Cytoplasmic staining is very strong in the vascular endothelia cells no staining in tumor cells.



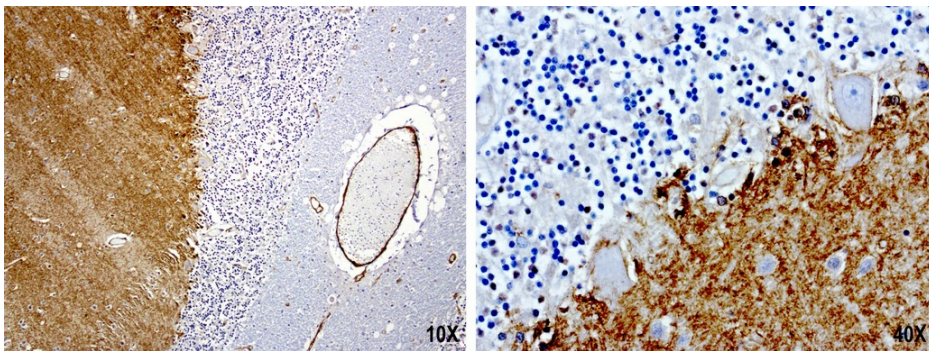
Immunohistochemical staining of paraffin-embedded human ovarian cancer using anti-PROCR clone UMAB200 mouse monoclonal antibody ([UM800092]) at 1:100 with Polink2 Broad HRP DAB detection kit; heat-induced epitope retrieval with GBI citrate pH6.0 HIER buffer using pressure chamber for 3 minutes at 110C. Cytoplasmic staining is very strong in the vascular endothelia cells and weak nuclear staining in ovarian tumor cells.



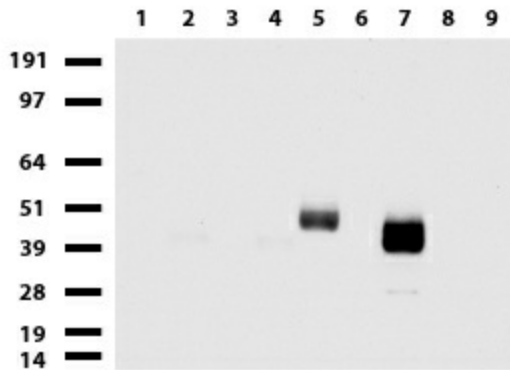
Immunohistochemical staining of paraffin-embedded human normal adjacent endometrium using anti-PROCR clone UMAB200 mouse monoclonal antibody ([UM800092]) at 1:100 with Polink2 Broad HRP DAB detection kit; heat-induced epitope retrieval with GBI citrate pH6.0 HIER buffer using pressure chamber for 3 minutes at 110C. Cytoplasmic staining is very strong in the vascular endothelia cells and weak nuclear and cytoplasmic staining in the glandular endometrial cells.



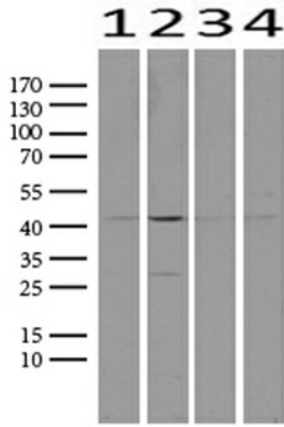
Immunohistochemical staining of 2 cases of paraffin-embedded human placenta using anti-PROCR clone UMAB200 mouse monoclonal antibody ([UM800092]) at 1:100 with Polink2 Broad HRP DAB detection kit; heat-induced epitope retrieval with GBI citrate pH6.0 HIER buffer using pressure chamber for 3 minutes at 110C. Very strong membraneous staining in the trophoblast cells. The endothelial cells show both cytoplasmic and membraneous staining.



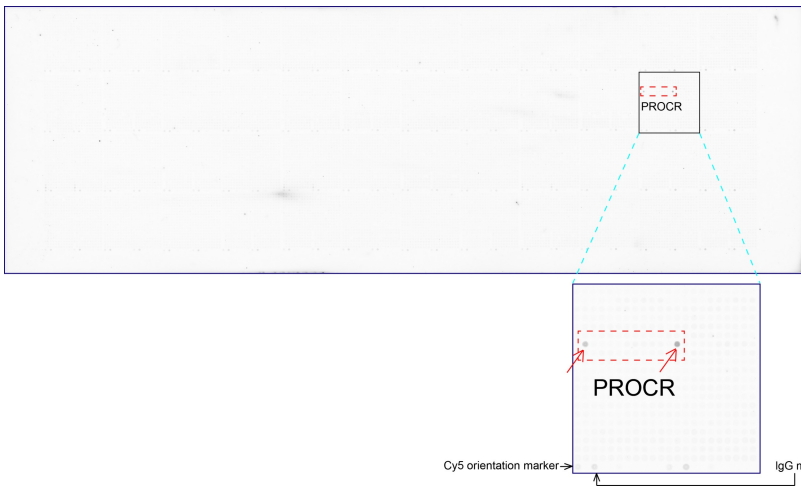
Immunohistochemical staining of paraffin-embedded human brain using anti-PROCR clone UMAB200 mouse monoclonal antibody ([UM800092]) at 1:100 with Polink2 Broad HRP DAB detection kit; heat-induced epitope retrieval with GBI citrate pH6.0 HIER buffer using pressure chamber for 3 minutes at 110C. Very strong cytoplasmic and membraneous staining in the molecular layer.



Western blot of cell lysates (35ug) from 9 different cell lines (1: HepG2, 2: HeLa, 3: SV-T2, 4: A549, 5: COS7, 6: Jurkat, 7: MDCK, 8: PC-12, 9: MCF7).



Western blot analysis of extracts (25ug) from 4 different cell lines by using anti-PROCR monoclonal antibody. (1:500) (1: HEK293; 2: Hela; 3: MCF7; 4: HepG2) Dilution: 1:500



OriGene overexpression protein microarray chip was immunostained with UltraMAB anti-PROCR mouse monoclonal antibody ([UM800092]). The positive reactive proteins are highlighted with two red arrows in the enlarged subarray. All the positive controls spotted in this subarray are also labeled for clarification (1:100).