

Product datasheet for **UM800090CF**

PD1 (PDCD1) Mouse Monoclonal Antibody [Clone ID: UMAB198]

Product data:

| | |
|-------------------------|--|
| Product Type: | Primary Antibodies |
| Clone Name: | UMAB198 |
| Applications: | 10k-ChIP, IF, IHC, WB |
| Recommended Dilution: | IHC 1:100~1200, WB 1:500, IF 1:100 |
| Reactivity: | Human, Mouse, Monkey, Dog |
| Host: | Mouse |
| Isotype: | IgG2a |
| Clonality: | Monoclonal |
| Immunogen: | Full length human recombinant protein of human PDCD1 (NP_005009) produced in HEK293T cell. |
| Formulation: | Lyophilized powder (original buffer 1X PBS, pH 7.3, 8% trehalose) |
| Reconstitution Method: | For reconstitution, we recommend adding 100uL distilled water to a final antibody concentration of about 1 mg/mL. To use this carrier-free antibody for conjugation experiment, we strongly recommend performing another round of desalting process. (OriGene recommends Zeba Spin Desalting Columns, 7KMWCO from Thermo Scientific) |
| Purification: | Purified from mouse ascites fluids or tissue culture supernatant by affinity chromatography (protein A/G) |
| Conjugation: | Unconjugated |
| Storage: | Store at -20°C as received. |
| Stability: | Stable for 12 months from date of receipt. |
| Predicted Protein Size: | 29.2 kDa |
| Gene Name: | programmed cell death 1 |
| Database Link: | NP_005009 Entrez Gene 18566 Mouse Entrez Gene 486213 Dog Entrez Gene 5133 Human Q15116 |

[View online »](#)

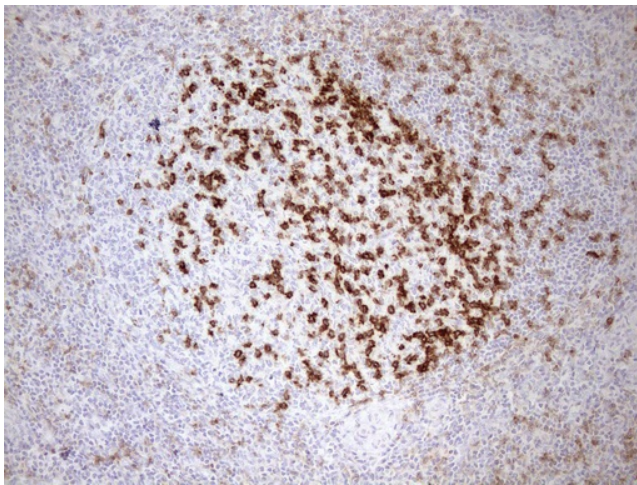
Background: This gene encodes a cell surface membrane protein of the immunoglobulin superfamily. This protein is expressed in pro-B-cells and is thought to play a role in their differentiation. In mice, expression of this gene is induced in the thymus when anti-CD3 antibodies are injected and large numbers of thymocytes undergo apoptosis. Mice deficient for this gene bred on a BALB/c background developed dilated cardiomyopathy and died from congestive heart failure. These studies suggest that this gene product may also be important in T cell function and contribute to the prevention of autoimmune diseases. [provided by RefSeq, Jul

Synonyms: CD279; hPD-1; hPD-I; hSLE1; PD-1; PD1; SLEB2

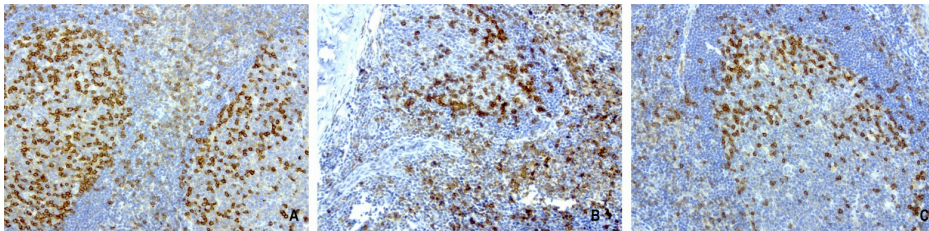
Protein Families: Druggable Genome, Transmembrane

Protein Pathways: Cell adhesion molecules (CAMs), T cell receptor signaling pathway

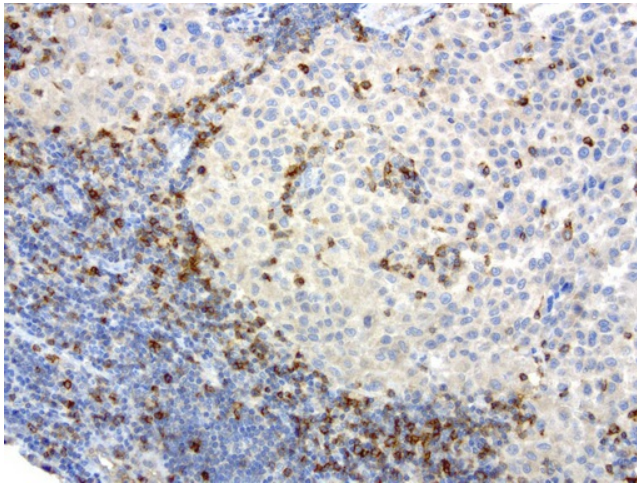
Product images:



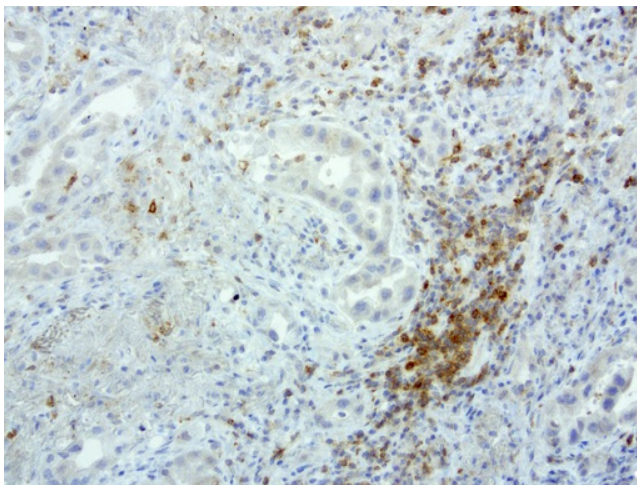
Immunohistochemical staining of paraffin-embedded Human tonsil using anti-PDCD1 mouse monoclonal antibody. (Heat-induced epitope retrieval by 1mM EDTA in 10mM Tris buffer (pH8.5) at 110°C for 10min, [UM800090]) (1:1200)



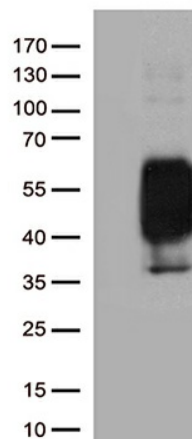
Immunohistochemical staining of 3 cases of paraffin-embedded human tonsil using anti-PD-1 clone UMAB198 mouse monoclonal antibody ([UM800090]) at 1:800 with Polink2 Broad HRP DAB detection kit; heat-induced epitope retrieval with GBI Accel pH8.7 HIER buffer using pressure chamber for 3 minutes at 110C. Very strong cytoplasmic and membraneous staining in the activated Tcells of tonsil.



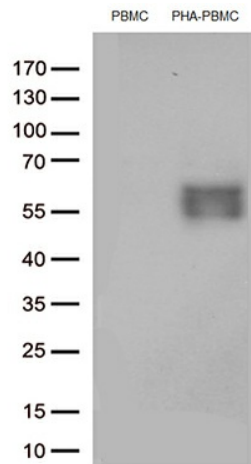
Immunohistochemical staining of paraffin-embedded human melanoma using anti-PD-1 clone UMAB198 mouse monoclonal antibody ([UM800090]) at 1:800 with Polink2 Broad HRP DAB detection kit; heat-induced epitope retrieval with GBI Accel pH8.7 HIER buffer using pressure chamber for 3 minutes at 110C. Very strong cytoplasmic and membraneous staining in the activated Tcells no staining on the tumor.



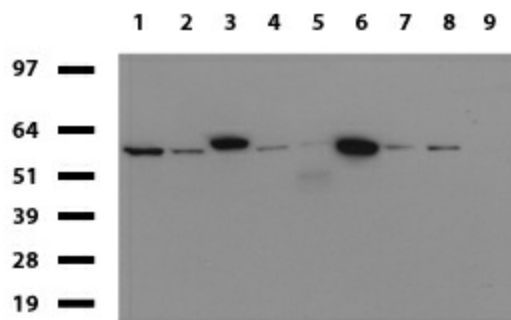
Immunohistochemical staining of paraffin-embedded human lung cancer using anti-PD-1 clone UMAB198 mouse monoclonal antibody ([UM800090]) at 1:800 with Polink2 Broad HRP DAB detection kit; heat-induced epitope retrieval with GBI Accel pH8.7 HIER buffer using pressure chamber for 3 minutes at 110C. Very strong cytoplasmic and membraneous staining in the activated Tcells no staining on the tumor.



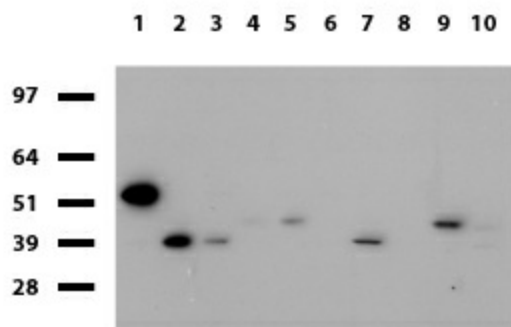
HEK293T cells were transfected with the pCMV6-ENTRY control (Left lane) or pCMV6-ENTRY PDCD1 ([RC210364], Right lane) cDNA for 48 hrs and lysed. Equivalent amounts of cell lysates (5 ug per lane) were separated by SDS-PAGE and immunoblotted with anti-PDCD1 antibody (1:2000).



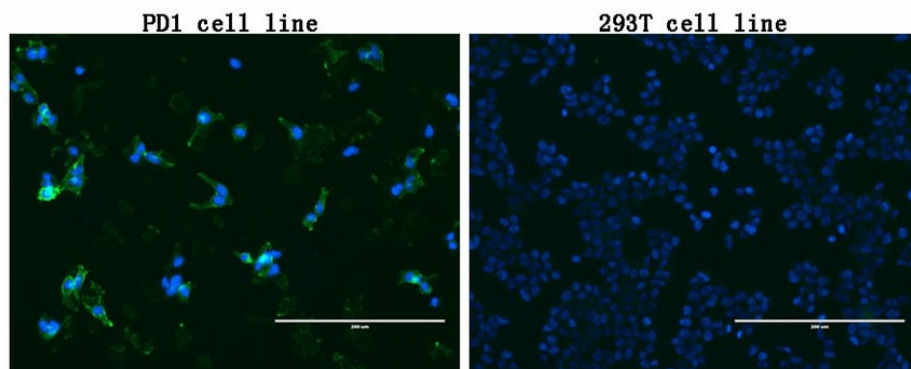
Western blot analysis of extracts (35ug) from PBMCs and PHA-stimulated-PBMCs by using anti-PDCD1 monoclonal antibody (1:250).



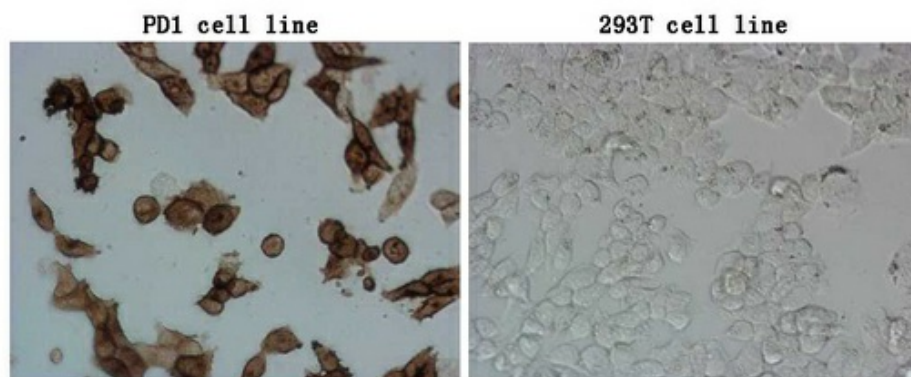
Western blot of cell lysates (35ug) from 9 different cell lines (1: HepG2, 2: HeLa, 3: SV-T2, 4: A549, 5: COS7, 6: Jurkat, 7: MDCK, 8: PC-12, 9: MCF7). Dilution: 1:500.



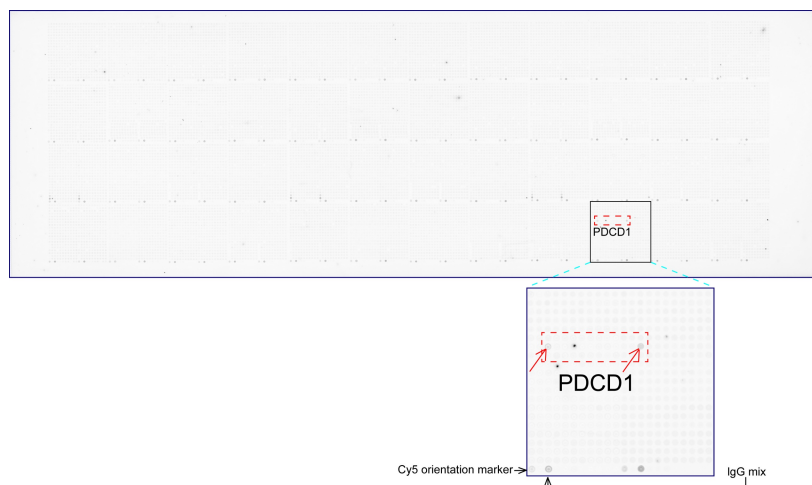
Western blot of human tissue lysates (15ug) from 10 different tissues (1: Testis, 2: Omentum, 3: Uterus, 4: Breast, 5: Brain, 6: Thyroid, 7: Colon, 8: Spleen, 9: Liver, 10: Ovary). Dilution: 1:500.



Immunofluorescent staining of PDCD1 ([RC210364])-stable-expression cells (left) labeling PDCD1 with mouse monoclonal antibody [UM800090] (1:100, green) and nucleus with Hoechst33342 (blue). HEK293T cells serve as negative control (right).



Immunocytochemistry staining of PDCD1 ([RC210364])-stable-expression cells (left) labeling PDCD1 with mouse anti-PDCD1 monoclonal antibody [UM800090] (1:900). The right is negative control.



OriGene overexpression protein microarray chip was immunostained with UltraMAB anti-PDCD1 mouse monoclonal antibody ([UM800090]). The positive reactive proteins are highlighted with two red arrows in the enlarged subarray. All the positive controls spotted in this subarray are also labeled for clarification (1:100).