

Product datasheet for **UM800077CF**

Gemin 8 (GEMIN8) Mouse Monoclonal Antibody [Clone ID: UMAB185]

Product data:

Product Type:	Primary Antibodies
Clone Name:	UMAB185
Applications:	10k-ChIP, IHC, WB
Recommended Dilution:	IHC 1:100~400
Reactivity:	Human
Host:	Mouse
Isotype:	IgG1
Clonality:	Monoclonal
Immunogen:	Full length human recombinant protein of human GEMIN8 (NP_060326) produced in E.coli.
Formulation:	Lyophilized powder (original buffer 1X PBS, pH 7.3, 8% trehalose)
Reconstitution Method:	For reconstitution, we recommend adding 100uL distilled water to a final antibody concentration of about 1 mg/mL. To use this carrier-free antibody for conjugation experiment, we strongly recommend performing another round of desalting process. (OriGene recommends Zeba Spin Desalting Columns, 7KMWCO from Thermo Scientific)
Purification:	Purified from mouse ascites fluids or tissue culture supernatant by affinity chromatography (protein A/G)
Conjugation:	Unconjugated
Storage:	Store at -20°C as received.
Stability:	Stable for 12 months from date of receipt.
Predicted Protein Size:	28.5 kDa
Gene Name:	gem nuclear organelle associated protein 8
Database Link:	NP_060326 Entrez Gene 54960 Human Q9NWZ8



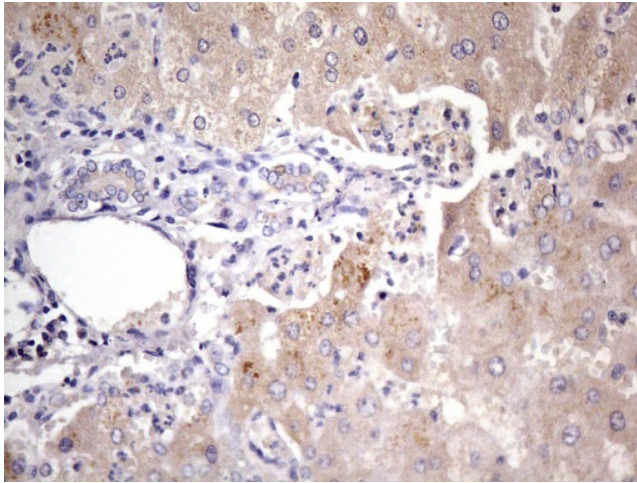
[View online »](#)

Background:

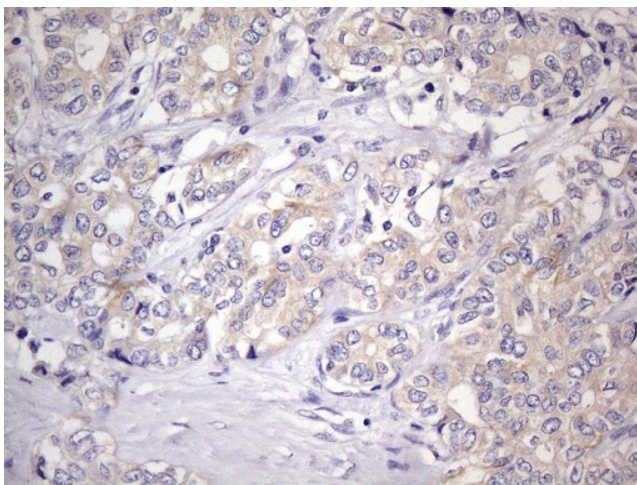
The protein encoded by this gene is part of the SMN complex, which is necessary for spliceosomal snRNP assembly in the cytoplasm and pre-mRNA splicing in the nucleus. The encoded protein binds to both SMN1 and the GEMIN6/GEMIN7 heterodimer, mediating their interaction. This protein is found in nuclear Gemini of Cajal bodies (gems) and in the cytoplasm. Three transcript variants encoding the same protein have been found for this gene. [provided by RefSeq, May 2010]

Synonyms:

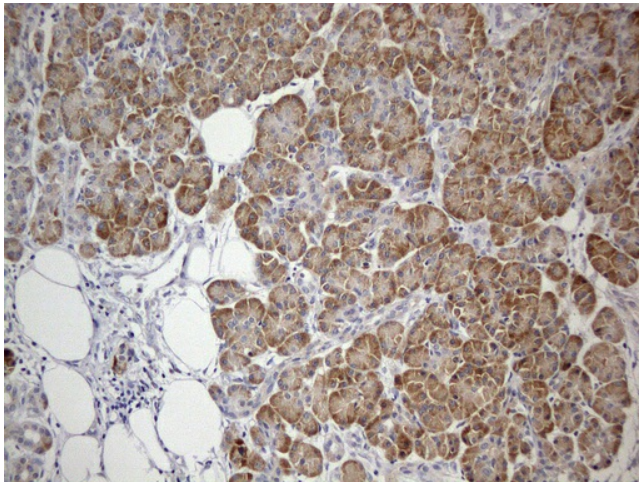
FAM51A1

Product images:

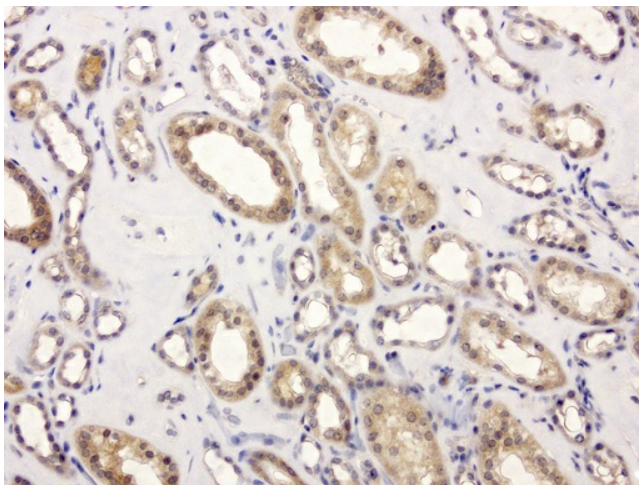
Immunohistochemical staining of paraffin-embedded Human liver tissue using anti-GEMIN8 mouse monoclonal antibody. (Heat-induced epitope retrieval by 1mM EDTA in 10mM Tris buffer (pH8.0) at 110°C for 10min, [UM800077]) (1:400)



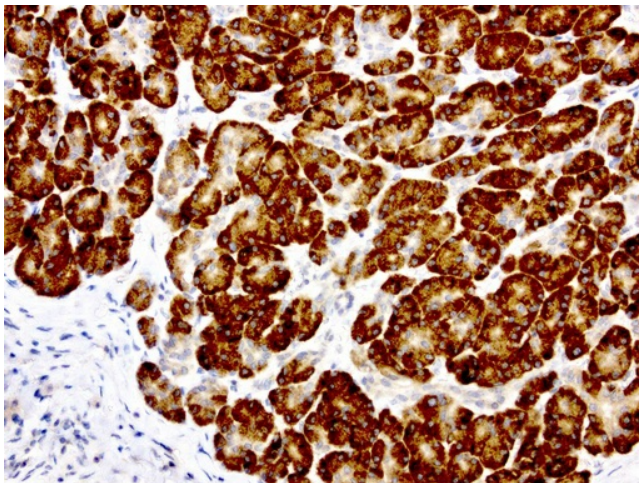
Immunohistochemical staining of paraffin-embedded Carcinoma of Human liver tissue using anti-GEMIN8 mouse monoclonal antibody. (Heat-induced epitope retrieval by 1mM EDTA in 10mM Tris buffer (pH8.0) at 110°C for 10min, [UM800077]) (1:400)



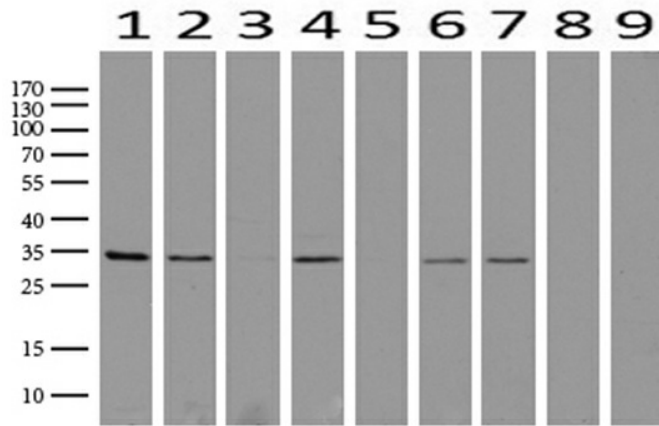
Immunohistochemical staining of paraffin-embedded Human pancreas tissue using anti-GEMIN8 mouse monoclonal antibody. (Heat-induced epitope retrieval by 1mM EDTA in 10mM Tris buffer (pH8.0) at 110°C for 10min, [UM800077]) (1:400)



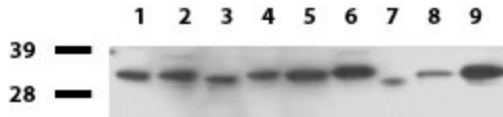
Immunohistochemical staining of paraffin-embedded human kidney using anti-GEMIN8 clone UMAB185 mouse monoclonal antibody at 1:400 dilution of 1.0 mg/mL using Polink2 Broad HRP DAB for detection. [UM800077] requires HIER with with Accel 3in1 EDTA solution pH8.7 at 110°C for 3min using pressure chamber/cooker. The tubule epithelia cells shows strong membraneous and cytoplasmic staining.



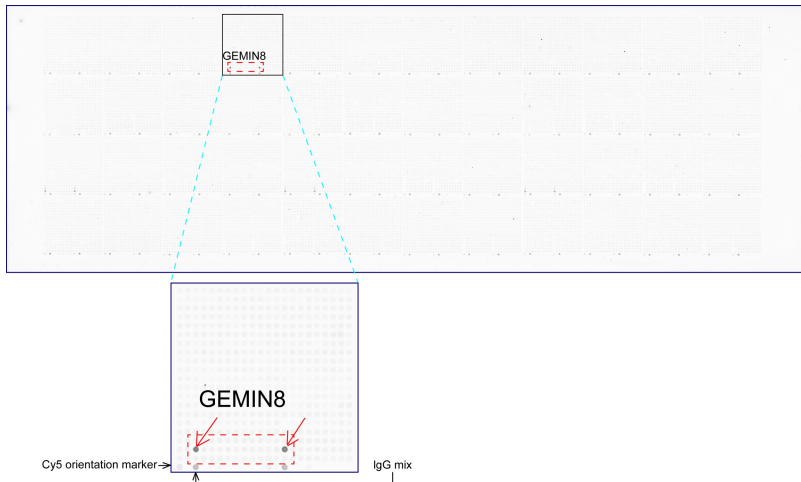
Immunohistochemical staining of paraffin-embedded human pancreas using anti-GEMIN8 clone UMAB185 mouse monoclonal antibody at 1:400 dilution of 1.0 mg/mL using Polink2 Broad HRP DAB for detection. [UM800077] requires HIER with with Accel 3in1 EDTA solution pH8.7 at 110°C for 3min using pressure chamber/cooker. The shows strong membraneous and cytoplasmic staining in exocrin cells.



Western blot analysis of extracts (15ug) from 9 Human tissue by using anti-GEMIN8 monoclonal antibody (1: Testis; 2: Uterus; 3: Breast; 4: Brain; 5: Liver; 6: Ovary; 7: Thyroid gland; 8: colon;;9:Spleen). (1:500) Dilution: 1:500



Western blot of cell lysates (35ug) from 9 different cell lines (1: HepG2, 2: HeLa, 3: SV-T2, 4: A549, 5: COS7, 6: Jurkat, 7: MDCK, 8: PC-12, 9: MCF7). Dilution: 1:500



OriGene overexpression protein microarray chip was immunostained with UltraMAB anti-GEMIN8 mouse monoclonal antibody ([UM800077]). The positive reactive proteins are highlighted with two red arrows in the enlarged subarray. All the positive controls spotted in this subarray are also labeled for clarification (1:100).