

Product datasheet for **UM800074CF**

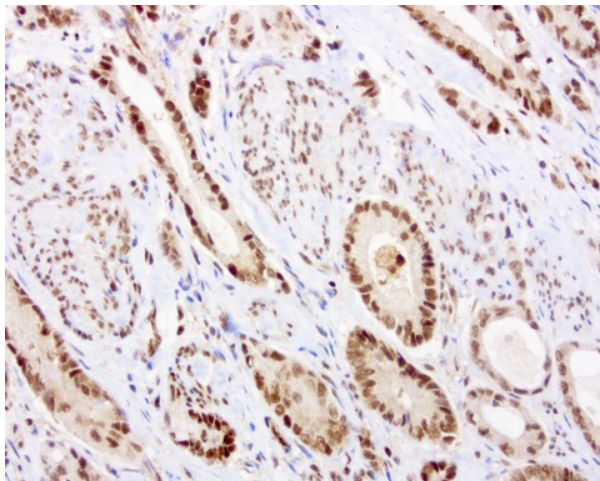
C14orf166 (RTRAF) Mouse Monoclonal Antibody [Clone ID: UMAB182]

Product data:

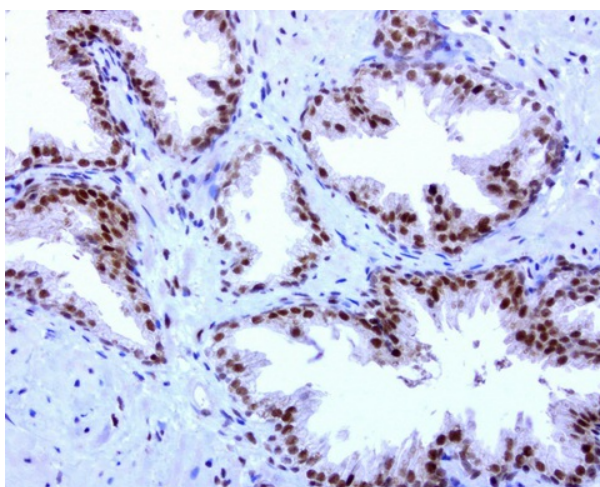
Product Type:	Primary Antibodies
Clone Name:	UMAB182
Applications:	IF, IHC, WB
Recommended Dilution:	IHC 1:200
Reactivity:	Human
Host:	Mouse
Isotype:	IgG1
Clonality:	Monoclonal
Immunogen:	Full length human recombinant protein of human C14orf166 (NP_057123) produced in E.coli.
Formulation:	Lyophilized powder (original buffer 1X PBS, pH 7.3, 8% trehalose)
Reconstitution Method:	For reconstitution, we recommend adding 100uL distilled water to a final antibody concentration of about 1 mg/mL. To use this carrier-free antibody for conjugation experiment, we strongly recommend performing another round of desalting process. (OriGene recommends Zeba Spin Desalting Columns, 7KMWCO from Thermo Scientific)
Purification:	Purified from mouse ascites fluids or tissue culture supernatant by affinity chromatography (protein A/G)
Conjugation:	Unconjugated
Storage:	Store at -20°C as received.
Stability:	Stable for 12 months from date of receipt.
Predicted Protein Size:	27.9 kDa
Gene Name:	RNA transcription, translation and transport factor
Database Link:	NP_057123 Entrez Gene 51637 Human Q9Y224
Synonyms:	CGI-99; CGI99; CLE; CLE7; hCLE1; LCRP369; RLLM1



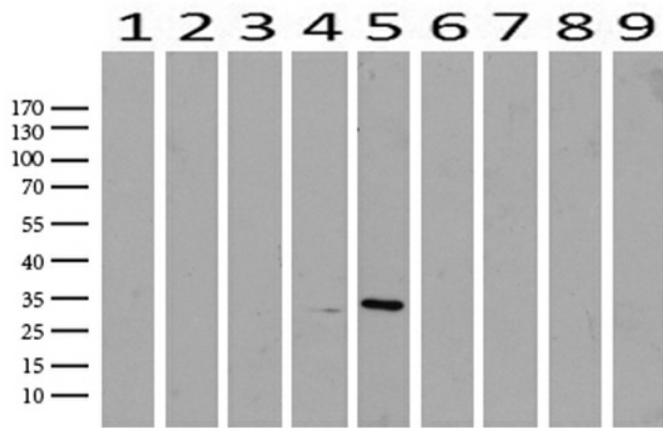
[View online »](#)

Product images:

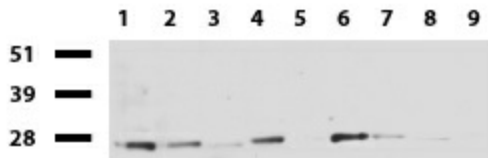
Immunohistochemical staining of paraffin-embedded human colon cancer using anti-C14ORF166 clone UMAB182 mouse monoclonal antibody at 1:600 dilution of 1mg/mL and detection with Polink2 Broad HRP DAB. [UM800074] requires heat-induced epitope retrieval with Accel for 3minutes at 110C in pressure chamber. The image shows the tumor cells have strong nuclear and weak cytoplasmic staining.



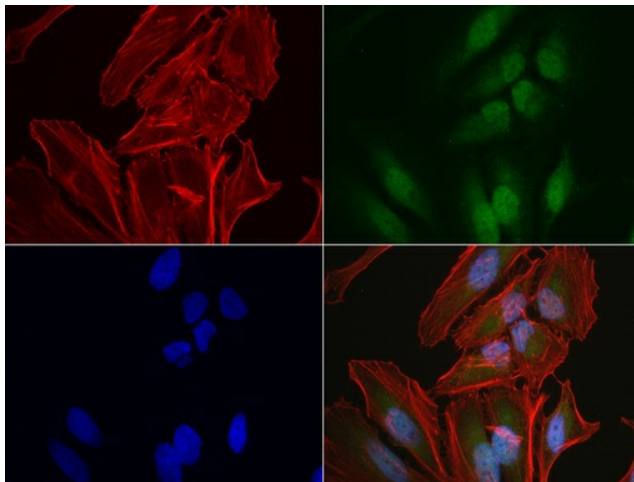
Immunohistochemical staining of paraffin-embedded human prostate cancer using anti-C14ORF166 clone UMAB182 mouse monoclonal antibody at 1:600 dilution of 1mg/mL and detection with Polink2 Broad HRP DAB. [UM800074] requires heat-induced epitope retrieval with Accel for 3minutes at 110C in pressure chamber. The image shows the tumor cells have strong nuclear and intermediate levels of cytoplasmic staining.



Western blot analysis of extracts (15ug) from 9 Human tissue by using anti-C14orf166 monoclonal antibody (1: Testis; 2: Uterus; 3: Breast; 4: Brain; 5: Liver; 6: Ovary; 7: Thyroid gland; 8: colon; 9: Spleen). (1:500) Dilution: 1:500



Western blot of cell lysates (35ug) from 9 different cell lines (1: HepG2, 2: HeLa, 3: SV-T2, 4: A549, 5: COS7, 6: Jurkat, 7: MDCK, 8: PC-12, 9: MCF7). Dilution: 1:250



Immunofluorescent staining of HeLa cells using anti-C14orf166 mouse monoclonal antibody ([UM800074], green, 1:50). Actin filaments were labeled with Alexa Fluor® 594 Phalloidin (red), and nuclear with DAPI (blue).