

## Product datasheet for **UM800069CF**

### CRABP2 Mouse Monoclonal Antibody [Clone ID: UMAB176]

#### Product data:

Product Type:	Primary Antibodies
Clone Name:	UMAB176
Applications:	10k-ChIP, IHC, WB
Recommended Dilution:	IHC 1:100~200
Reactivity:	Human, Mouse
Host:	Mouse
Isotype:	IgG1
Clonality:	Monoclonal
Immunogen:	Full length human recombinant protein of human CRABP2 (NP_001869) produced in E.coli.
Formulation:	Lyophilized powder (original buffer 1X PBS, pH 7.3, 8% trehalose)
Reconstitution Method:	For reconstitution, we recommend adding 100uL distilled water to a final antibody concentration of about 1 mg/mL. To use this carrier-free antibody for conjugation experiment, we strongly recommend performing another round of desalting process. (OriGene recommends Zeba Spin Desalting Columns, 7KMWCO from Thermo Scientific)
Purification:	Purified from mouse ascites fluids or tissue culture supernatant by affinity chromatography (protein A/G)
Conjugation:	Unconjugated
Storage:	Store at -20°C as received.
Stability:	Stable for 12 months from date of receipt.
Predicted Protein Size:	15.5 kDa
Gene Name:	cellular retinoic acid binding protein 2
Database Link:	<a href="#">NP_001869</a> <a href="#">Entrez Gene 12904 Mouse</a> <a href="#">Entrez Gene 1382 Human</a> <a href="#">P29373</a>



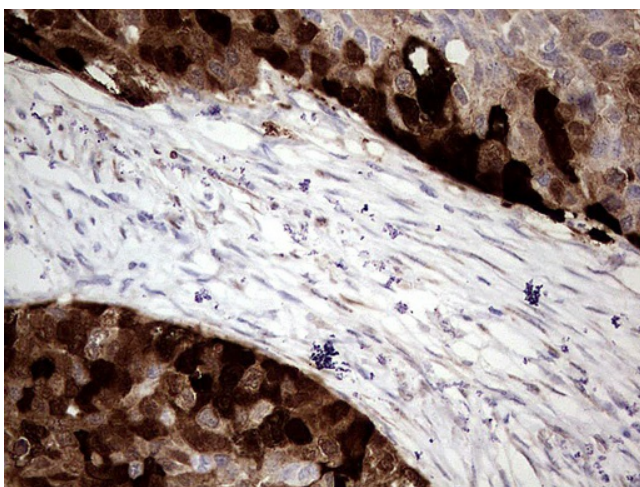
[View online »](#)

**Background:** This gene encodes a member of the retinoic acid (RA, a form of vitamin A) binding protein family and lipocalin/cytosolic fatty-acid binding protein family. The protein is a cytosol-to-nuclear shuttling protein, which facilitates RA binding to its cognate receptor complex and transfer to the nucleus. It is involved in the retinoid signaling pathway, and is associated with increased circulating low-density lipoprotein cholesterol. Alternatively spliced transcript variants encoding the same protein have been found for this gene. [provided by RefSeq, Dec 2010]

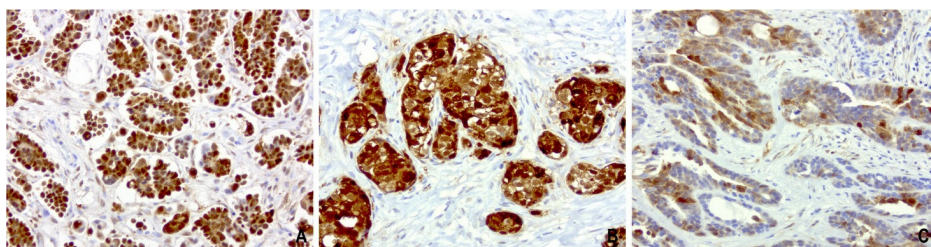
**Synonyms:** CRABP-II; RBP6

**Protein Families:** Druggable Genome, Transcription Factors

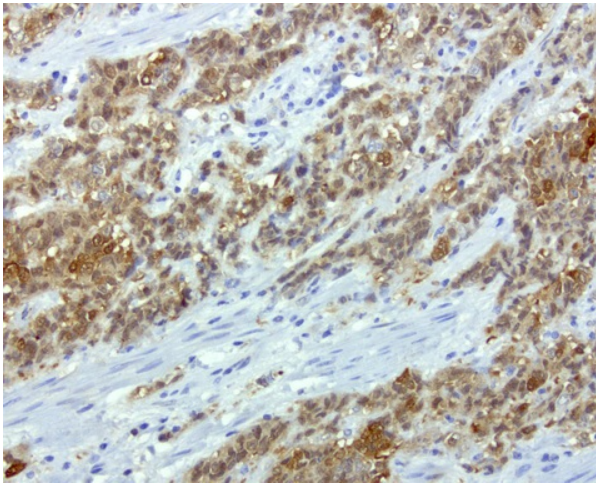
### Product images:



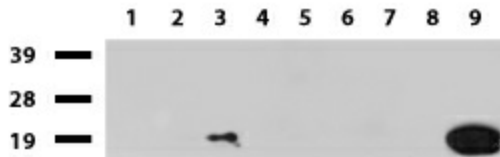
Immunohistochemical staining of paraffin-embedded Carcinoma of Human kidney tissue using anti-CRABP2 mouse monoclonal antibody. [UM800069]; heat-induced epitope retrieval by 10mM citric buffer, pH6.0, 120°C for 3min)



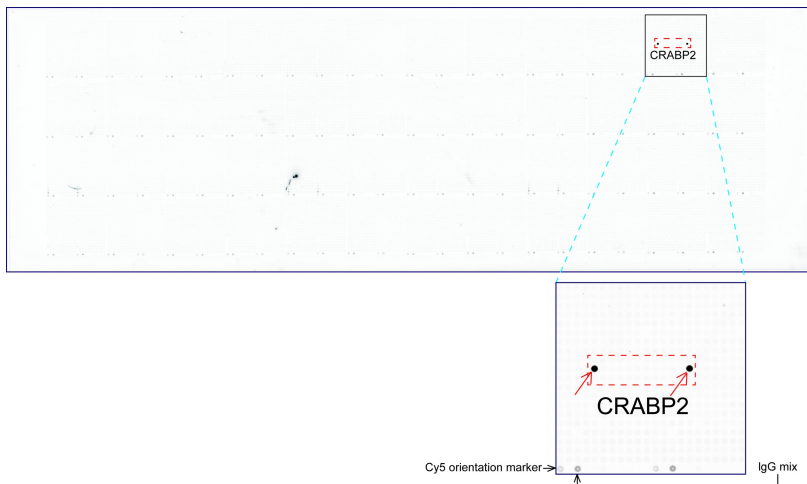
Immunohistochemical staining of paraffin-embedded human ovarian carcinoma using anti-CRABP2 mouse monoclonal antibody at 1:200 dilution of 1mg/mL using Polink2 Broad HRP DAB for detection. [UM800069] requires HIER with citrate pH 6.0 at 110°C for 3min using pressure chamber/cooker. The composite of 3 ovarian tumors shows strong nuclear, cytoplasmic, and membrane staining in the tumor cells.



Immunohistochemical staining of paraffin-embedded human endometrial carcinoma using anti-CRABP2 mouse monoclonal antibody at 1:200 dilution of 1 mg/mL using Polink2 Broad HRP DAB for detection. [UM800069] requires HIER with citrate pH 6.0 at 110°C for 3min using pressure chamber/cooker. The composite of 3 ovarian tumors shows strong nuclear, cytoplasmic, and membrane staining in the tumor cells



Western blot of cell lysates (35ug) from 9 different cell lines (1: HepG2, 2: HeLa, 3: SV-T2, 4: A549, 5: COS7, 6: Jurkat, 7: MDCK, 8: PC-12, 9: MCF7). Dilution: 1:500



OriGene overexpression protein microarray chip was immunostained with UltraMAB anti-CRABP2 mouse monoclonal antibody ([UM800069]). The positive reactive proteins are highlighted with two red arrows in the enlarged subarray. All the positive controls spotted in this subarray are also labeled for clarification.