

Product datasheet for **UM800068CF**

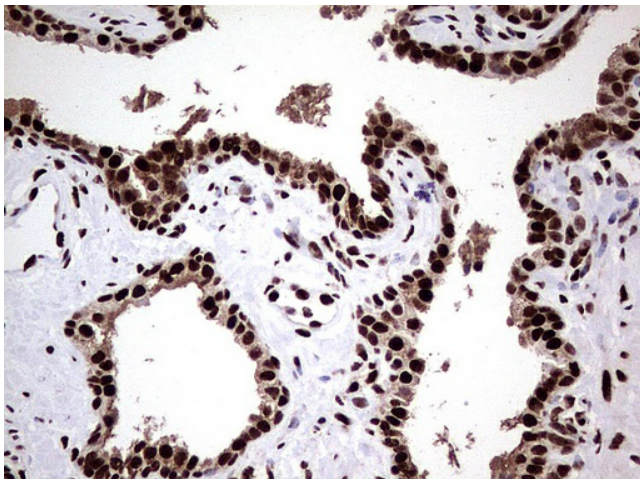
C14orf166 (RTRAF) Mouse Monoclonal Antibody [Clone ID: UMAB175]

Product data:

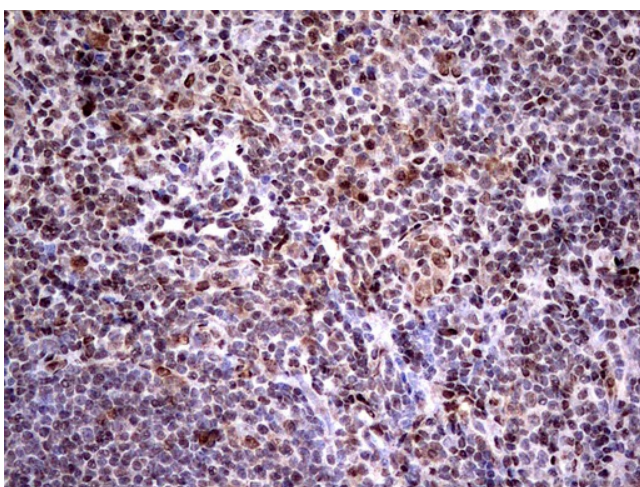
Product Type:	Primary Antibodies
Clone Name:	UMAB175
Applications:	10k-ChIP, IF, IHC, WB
Recommended Dilution:	IHC 1:100~200
Reactivity:	Human
Host:	Mouse
Isotype:	IgG1
Clonality:	Monoclonal
Immunogen:	Full length human recombinant protein of human C14orf166 (NP_057123) produced in E.coli.
Formulation:	Lyophilized powder (original buffer 1X PBS, pH 7.3, 8% trehalose)
Reconstitution Method:	For reconstitution, we recommend adding 100uL distilled water to a final antibody concentration of about 1 mg/mL. To use this carrier-free antibody for conjugation experiment, we strongly recommend performing another round of desalting process. (OriGene recommends Zeba Spin Desalting Columns, 7KMWCO from Thermo Scientific)
Purification:	Purified from mouse ascites fluids or tissue culture supernatant by affinity chromatography (protein A/G)
Conjugation:	Unconjugated
Storage:	Store at -20°C as received.
Stability:	Stable for 12 months from date of receipt.
Predicted Protein Size:	27.9 kDa
Gene Name:	RNA transcription, translation and transport factor
Database Link:	NP_057123 Entrez Gene 51637 Human Q9Y224
Synonyms:	CGI-99; CGI99; CLE; CLE7; hCLE1; LCRP369; RLLM1



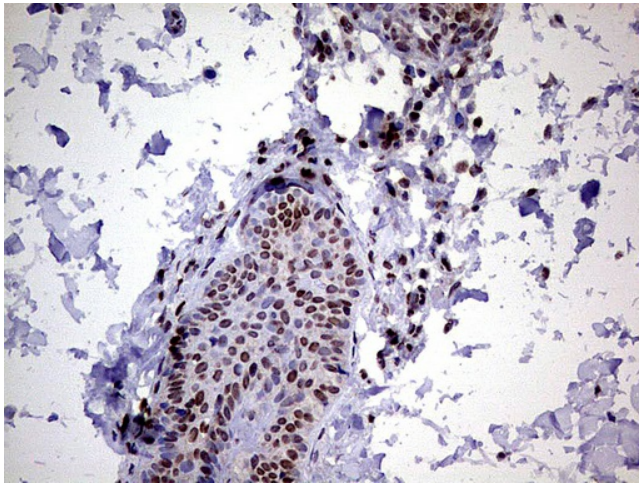
[View online »](#)

Product images:

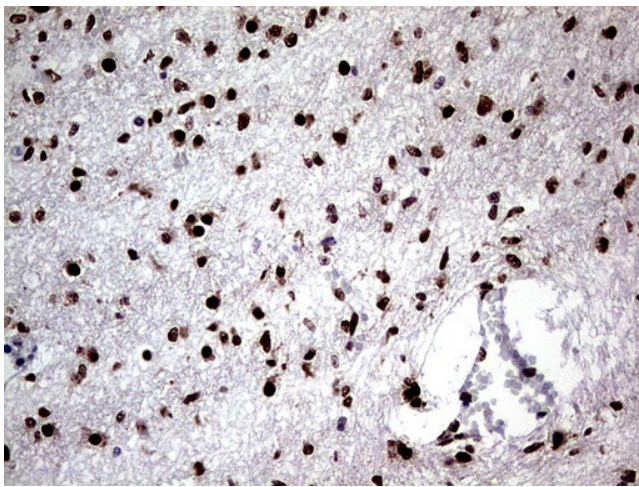
Immunohistochemical staining of paraffin-embedded Human prostate tissue using anti-C14orf166 mouse monoclonal antibody. ([UM800068]; heat-induced epitope retrieval by 1mM EDTA in 10mM Tris, pH8.5, 120°C for 3min)



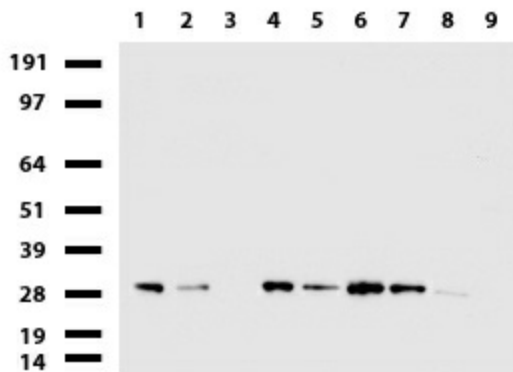
Immunohistochemical staining of paraffin-embedded Human tonsil using anti-C14orf166 mouse monoclonal antibody. ([UM800068]; heat-induced epitope retrieval by 1mM EDTA in 10mM Tris, pH8.5, 120°C for 3min)



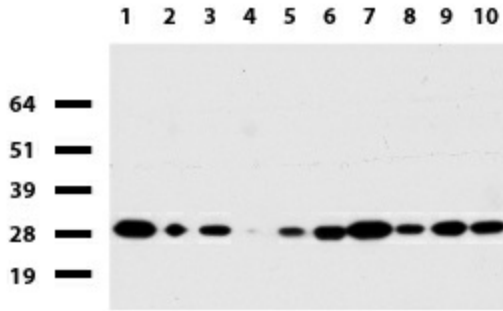
Immunohistochemical staining of paraffin-embedded Human skin tissue using anti-C14orf166 mouse monoclonal antibody. ([UM800068]; heat-induced epitope retrieval by 1mM EDTA in 10mM Tris, pH8.5, 120°C for 3min)



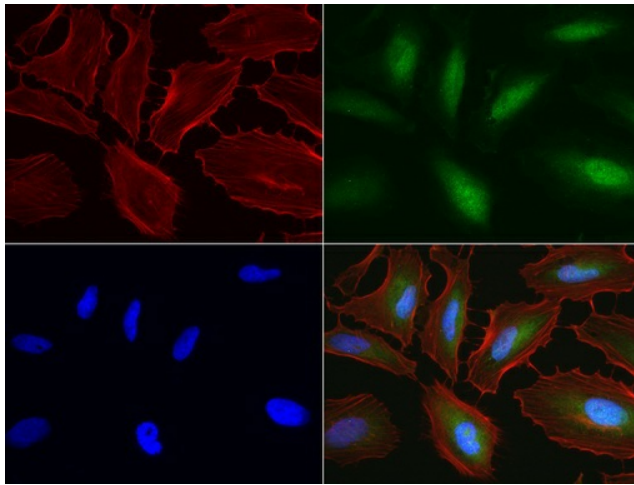
Immunohistochemical staining of paraffin-embedded Human embryonic cerebellum using anti-C14orf166 mouse monoclonal antibody. ([UM800068]; heat-induced epitope retrieval by 1mM EDTA in 10mM Tris, pH8.5, 120°C for 3min)



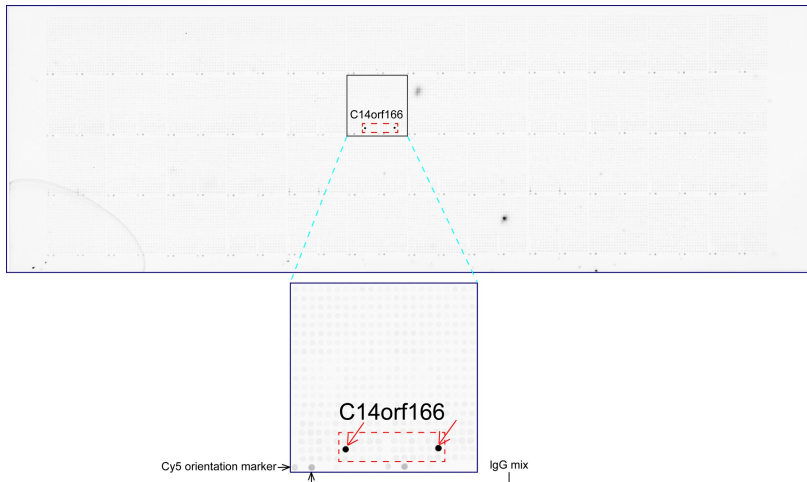
Western blot of cell lysates (35ug) from 9 different cell lines (1: HepG2, 2: HeLa, 3: SV-T2, 4: A549, 5: Jurkat, 6: MDCK, 7: COS7, 8: PC-12, 9: MCF7).



Western blot of human tissue lysates (15ug) from 10 different tissues (1: Testis, 2: Omentum, 3: Uterus, 4: Breast, 5: Brain, 6: Liver, 7: Ovary, 8: Thyroid, 9: Colon, 10: Spleen). Dilution: 1:500.



Immunofluorescent staining of HeLa cells using anti-C14orf166 mouse monoclonal antibody ([UM800068], green, 1:100). Actin filaments were labeled with Alexa Fluor® 594 Phalloidin (red), and nuclear with DAPI (blue).



OriGene overexpression protein microarray chip was immunostained with UltraMAB anti-C14orf166 mouse monoclonal antibody ([UM800068]). The positive reactive proteins are highlighted with two red arrows in the enlarged subarray. All the positive controls spotted in this subarray are also labeled for clarification.