

## Product datasheet for **UM800067CF**

### Calprotectin (S100A9) Mouse Monoclonal Antibody [Clone ID: UMAB174]

#### Product data:

Product Type:	Primary Antibodies
Clone Name:	UMAB174
Applications:	10k-ChIP, IHC, WB
Recommended Dilution:	IHC 1:100~200
Reactivity:	Human
Host:	Mouse
Isotype:	IgG2a
Clonality:	Monoclonal
Immunogen:	Full length human recombinant protein of human S100A9 (NP_002956) produced in SF9 cell.
Formulation:	Lyophilized powder (original buffer 1X PBS, pH 7.3, 8% trehalose)
Reconstitution Method:	For reconstitution, we recommend adding 100uL distilled water to a final antibody concentration of about 1 mg/mL. To use this carrier-free antibody for conjugation experiment, we strongly recommend performing another round of desalting process. (OriGene recommends Zeba Spin Desalting Columns, 7KMWCO from Thermo Scientific)
Purification:	Purified from mouse ascites fluids or tissue culture supernatant by affinity chromatography (protein A/G)
Conjugation:	Unconjugated
Storage:	Store at -20°C as received.
Stability:	Stable for 12 months from date of receipt.
Predicted Protein Size:	13.1 kDa
Gene Name:	S100 calcium binding protein A9
Database Link:	<a href="#">NP_002956</a> <a href="#">Entrez Gene 6280 Human</a> <a href="#">P06702</a>



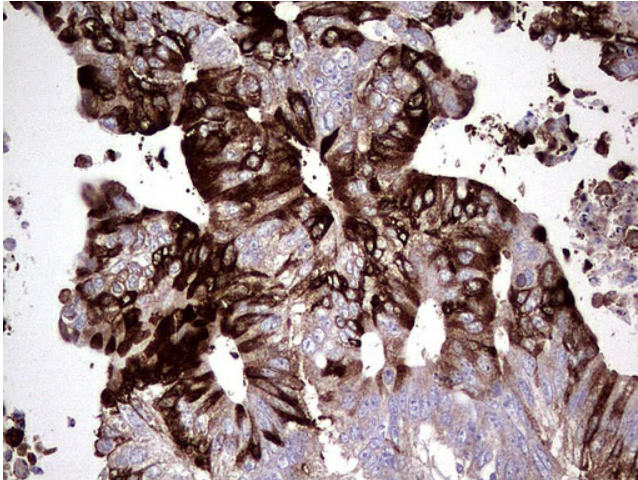
[View online »](#)

**Background:**

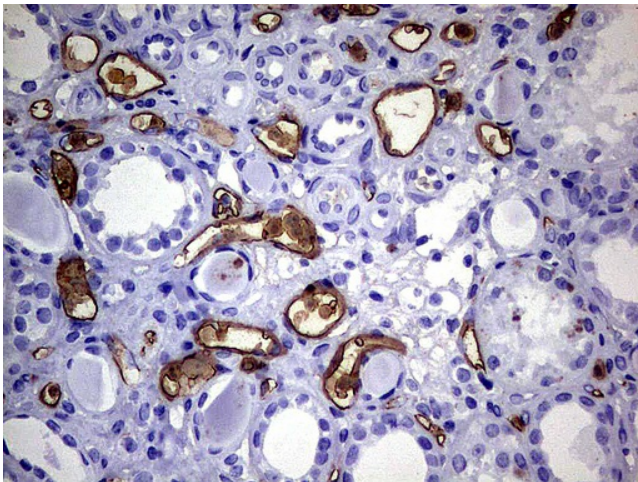
The protein encoded by this gene is a member of the S100 family of proteins containing 2 EF-hand calcium-binding motifs. S100 proteins are localized in the cytoplasm and/or nucleus of a wide range of cells, and involved in the regulation of a number of cellular processes such as cell cycle progression and differentiation. S100 genes include at least 13 members which are located as a cluster on chromosome 1q21. This protein may function in the inhibition of casein kinase and altered expression of this protein is associated with the disease cystic fibrosis. [provided by RefSeq, Jul 2008]

**Synonyms:**

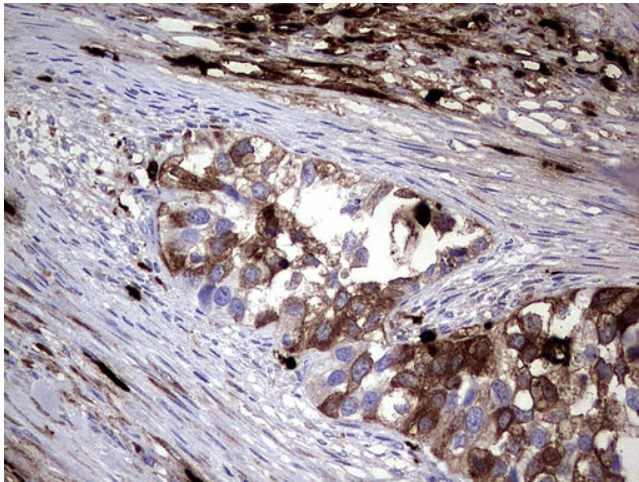
60B8AG; CAGB; CFAG; CGLB; L1AG; LIAG; MAC387; MIF; MRP14; NIF; P14

**Product images:**

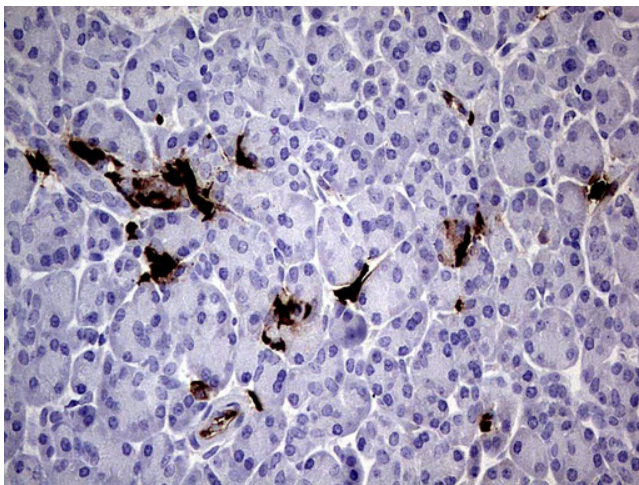
Immunohistochemical staining of paraffin-embedded Human colon tissue using anti-S100A9 mouse monoclonal antibody. ([UM800067]; heat-induced epitope retrieval by 1mM EDTA in 10mM Tris, pH8.0, 120°C for 3min)



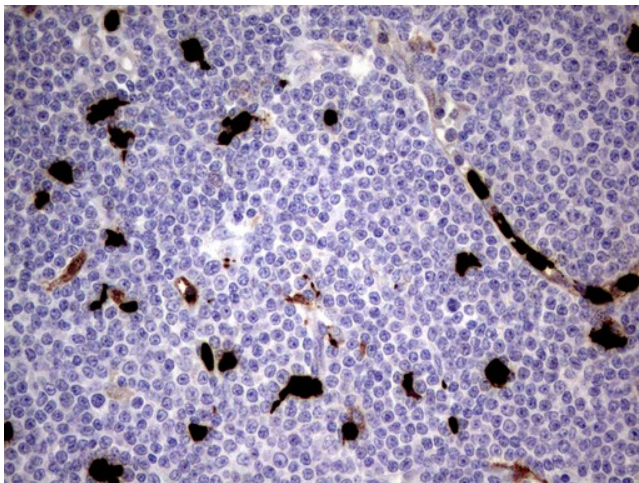
Immunohistochemical staining of paraffin-embedded Human Kidney tissue using anti-S100A9 mouse monoclonal antibody. ([UM800067]; heat-induced epitope retrieval by 1mM EDTA in 10mM Tris, pH8.0, 120°C for 3min)



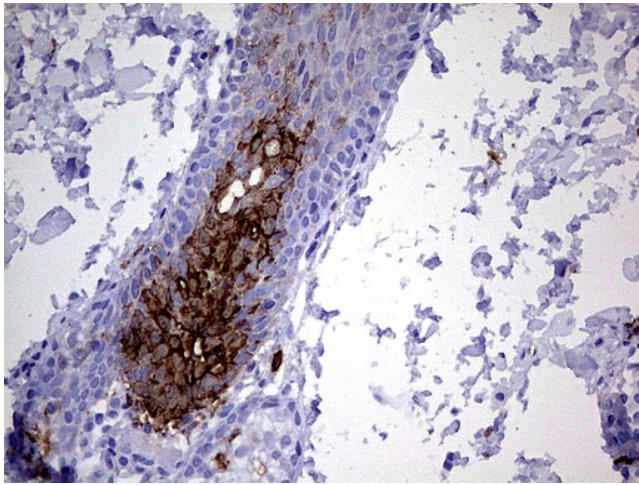
Immunohistochemical staining of paraffin-embedded Carcinoma of Human kidney tissue using anti-S100A9 mouse monoclonal antibody. ([UM800067]; heat-induced epitope retrieval by 1mM EDTA in 10mM Tris, pH8.0, 120°C for 3min)



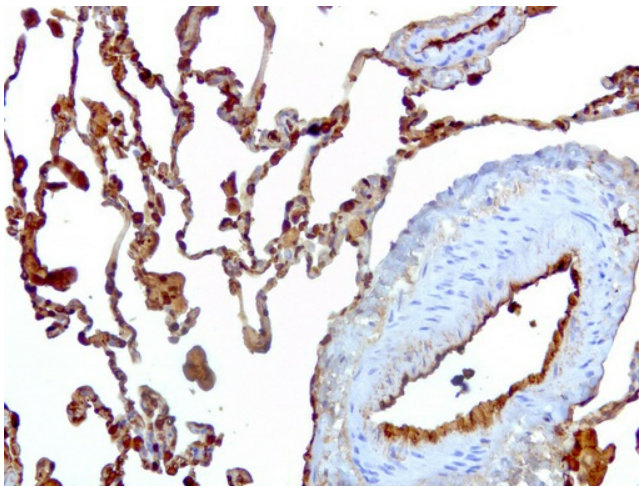
Immunohistochemical staining of paraffin-embedded Human pancreas tissue using anti-S100A9 mouse monoclonal antibody. ([UM800067]; heat-induced epitope retrieval by 1mM EDTA in 10mM Tris, pH8.0, 120°C for 3min)



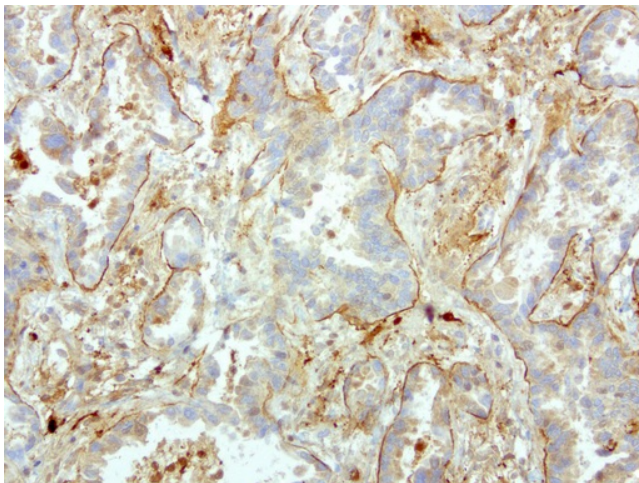
Immunohistochemical staining of paraffin-embedded Human lymphoma tissue using anti-S100A9 mouse monoclonal antibody. ([UM800067]; heat-induced epitope retrieval by 1mM EDTA in 10mM Tris, pH8.0, 120°C for 3min)



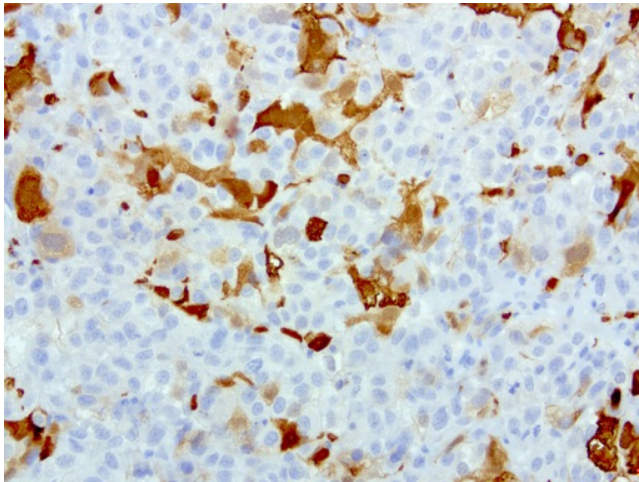
Immunohistochemical staining of paraffin-embedded Human skin tissue using anti-S100A9 mouse monoclonal antibody. ([UM800067]; heat-induced epitope retrieval by 1mM EDTA in 10mM Tris, pH8.0, 120°C for 3min)



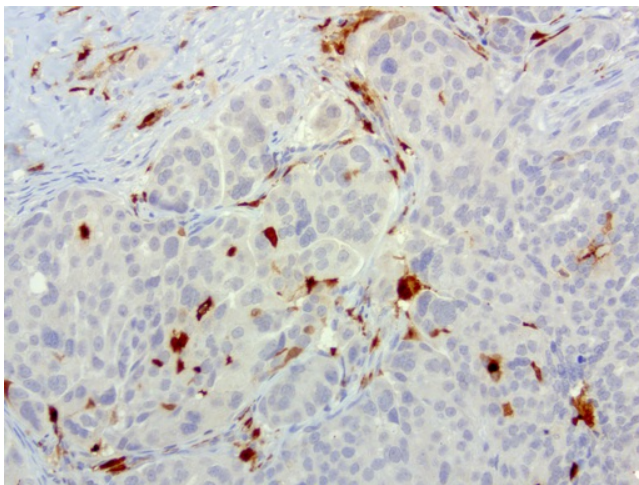
Immunohistochemical staining of paraffin-embedded human lung using anti-S100A9 clone UMAB174 mouse monoclonal antibody ([UM800067]) at 1:200 with Polink2 Broad HRP DAB detection kit; heat-induced epitope retrieval with GBI Accel pH8.7 HIER buffer using pressure chamber for 3 minutes at 110C. Nuclear, cytoplasmic, and membrane staining is seen in epithelial cells.



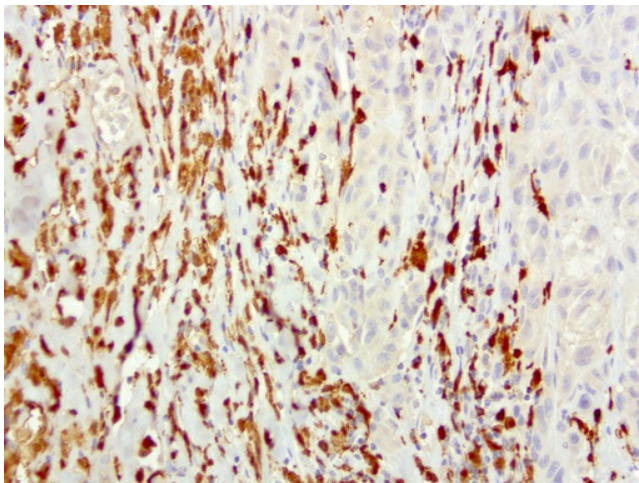
Immunohistochemical staining of paraffin-embedded human lung carcinoma using anti-S100A9 clone UMAB174 mouse monoclonal antibody ([UM800067]) at 1:200 with Polink2 Broad HRP DAB detection kit; heat-induced epitope retrieval with GBI Accel pH8.7 HIER buffer using pressure chamber for 3 minutes at 110C. Nuclear, cytoplasmic, and membrane staining is seen in tumor cells.



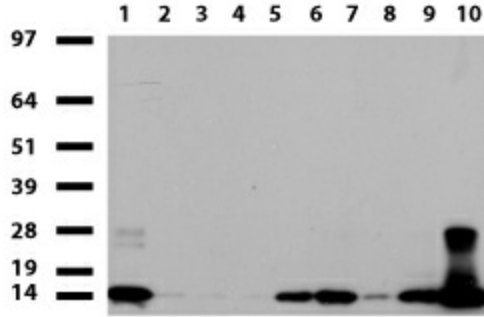
Immunohistochemical staining of paraffin-embedded human endometrial carcinoma using anti-S100A9 clone UMAB174 mouse monoclonal antibody ([UM800067]) at 1:200 with Polink2 Broad HRP DAB detection kit; heat-induced epitope retrieval with GBI Accel pH8.7 HIER buffer using pressure chamber for 3 minutes at 110C. Nuclear, cytoplasmic, and membrane staining is seen in tumor cells.



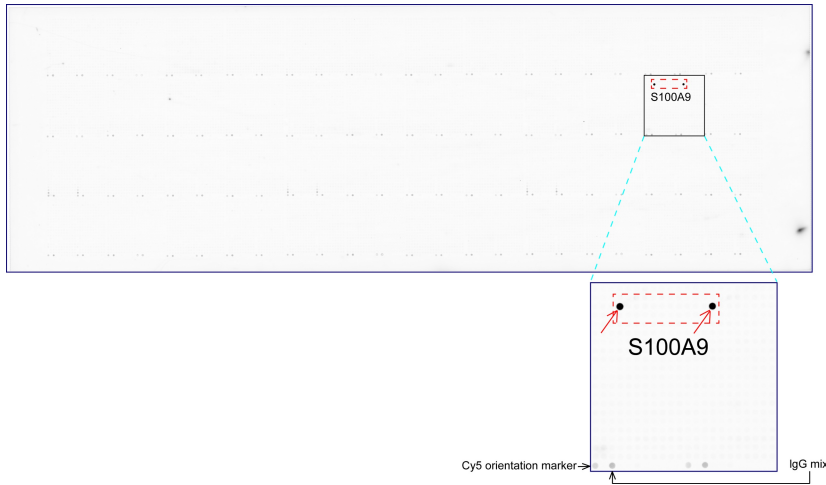
Immunohistochemical staining of paraffin-embedded human ovarian carcinoma using anti-S100A9 clone UMAB174 mouse monoclonal antibody ([UM800067]) at 1:200 with Polink2 Broad HRP DAB detection kit; heat-induced epitope retrieval with GBI Accel pH8.7 HIER buffer using pressure chamber for 3 minutes at 110C. Nuclear, cytoplasmic, and membrane staining is seen in macrophages and no staining is tumor cells.



Immunohistochemical staining of paraffin-embedded human melanoma using anti-S100A9 clone UMAB174 mouse monoclonal antibody ([UM800067]) at 1:200 with Polink2 Broad HRP DAB detection kit; heat-induced epitope retrieval with GBI Accel pH8.7 HIER buffer using pressure chamber for 3 minutes at 110C. Nuclear, cytoplasmic, and membrane staining is seen in infiltrating lymphocytes and no staining is tumor cells.



Western blot of human tissue lysates (15ug) from 10 different tissues (1: Testis, 2: Omentum, 3: Uterus, 4: Breast, 5: Brain, 6: Liver, 7: Ovary, 8: Thyroid 9: Colon, 10: Spleen). Dilution: 1:500.



OriGene overexpression protein microarray chip was immunostained with UltraMAB anti-S100A9 mouse monoclonal antibody ([UM800067]). The positive reactive proteins are highlighted with two red arrows in the enlarged subarray. All the positive controls spotted in this subarray are also labeled for clarification.