

## Product datasheet for **UM800064CF**

### GBA Mouse Monoclonal Antibody [Clone ID: UMAB171]

#### Product data:

Product Type:	Primary Antibodies
Clone Name:	UMAB171
Applications:	10k-ChIP, IF, IHC
Recommended Dilution:	IHC 1:100~200
Reactivity:	Human, Mouse, Rat
Host:	Mouse
Isotype:	IgG2a
Clonality:	Monoclonal
Immunogen:	Human recombinant protein fragment corresponding to amino acids 40-315 of human GBA (NP_000148) produced in E.coli.
Formulation:	Lyophilized powder (original buffer 1X PBS, pH 7.3, 8% trehalose)
Reconstitution Method:	For reconstitution, we recommend adding 100uL distilled water to a final antibody concentration of about 1 mg/mL. To use this carrier-free antibody for conjugation experiment, we strongly recommend performing another round of desalting process. (OriGene recommends Zeba Spin Desalting Columns, 7KMWCO from Thermo Scientific)
Purification:	Purified from mouse ascites fluids or tissue culture supernatant by affinity chromatography (protein A/G)
Conjugation:	Unconjugated
Storage:	Store at -20°C as received.
Stability:	Stable for 12 months from date of receipt.
Predicted Protein Size:	55.5 kDa
Gene Name:	glucosylceramidase beta
Database Link:	<a href="#">NP_000148</a> <a href="#">Entrez Gene 14466 Mouse</a> <a href="#">Entrez Gene 2629 Human</a> <a href="#">P04062</a>



[View online »](#)

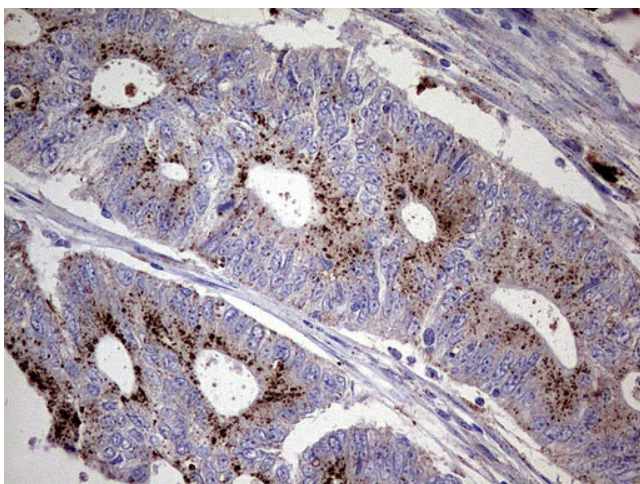
**Background:** This gene encodes a lysosomal membrane protein that cleaves the beta-glucosidic linkage of glycosylceramide, an intermediate in glycolipid metabolism. Mutations in this gene cause Gaucher disease, a lysosomal storage disease characterized by an accumulation of glucocerebrosides. A related pseudogene is approximately 12 kb downstream of this gene on chromosome 1. Alternative splicing results in multiple transcript variants. [provided by RefSeq, Jan 2010]

**Synonyms:** GBA1; GCB; GLUC

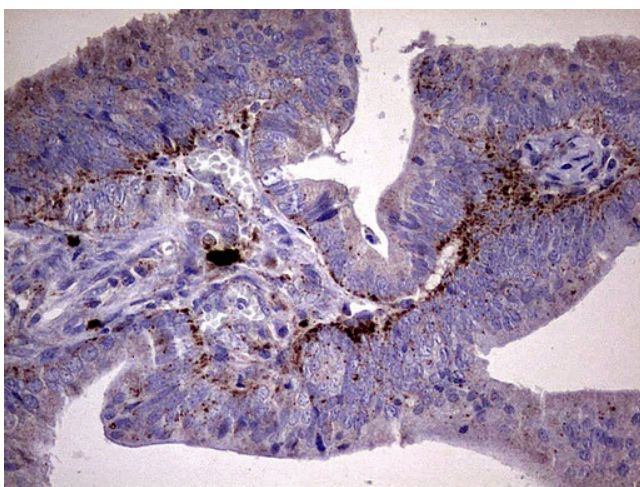
**Protein Families:** Druggable Genome

**Protein Pathways:** Lysosome, Metabolic pathways, Other glycan degradation, Sphingolipid metabolism

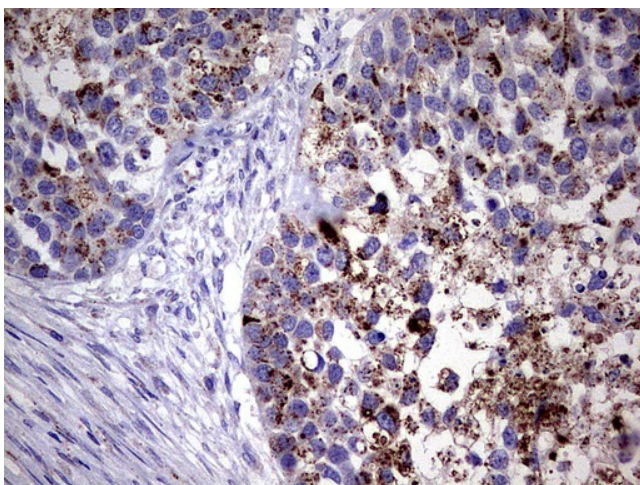
### Product images:



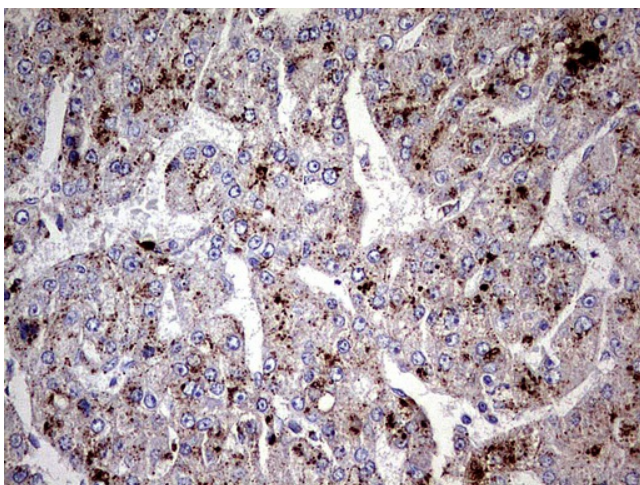
Immunohistochemical staining of paraffin-embedded Human colon tissue using anti-GBA mouse monoclonal antibody. ([UM800064]; heat-induced epitope retrieval by 1mM EDTA in 10mM Tris, pH8.0, 120°C for 3min)



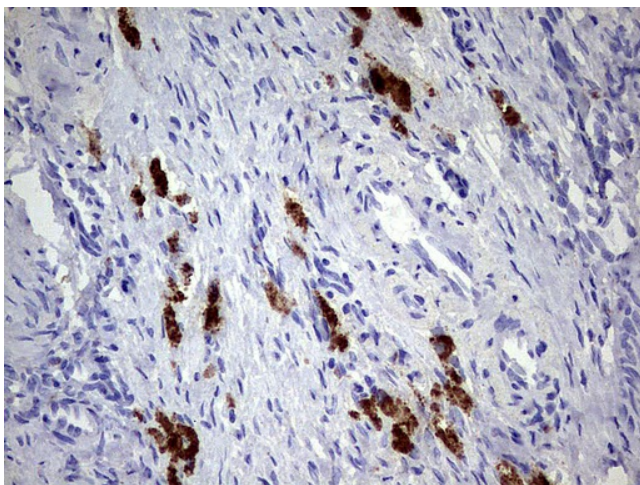
Immunohistochemical staining of paraffin-embedded Adenocarcinoma of Human colon tissue using anti-GBA mouse monoclonal antibody. ([UM800064]; heat-induced epitope retrieval by 1mM EDTA in 10mM Tris, pH8.0, 120°C for 3min)



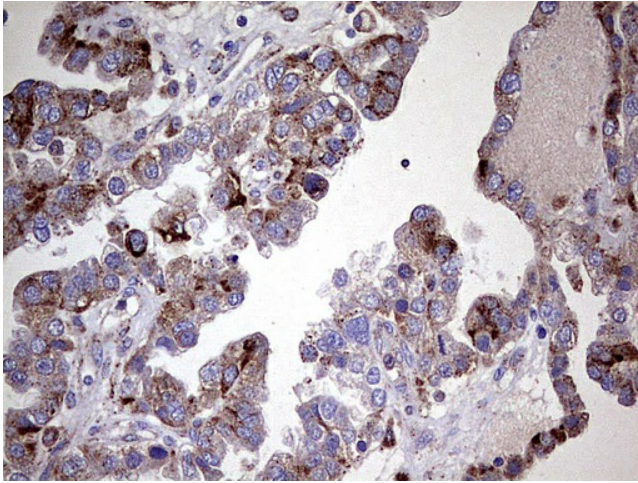
Immunohistochemical staining of paraffin-embedded Carcinoma of Human kidney tissue using anti-GBA mouse monoclonal antibody. ([UM800064]; heat-induced epitope retrieval by 1mM EDTA in 10mM Tris, pH8.0, 120°C for 3min)



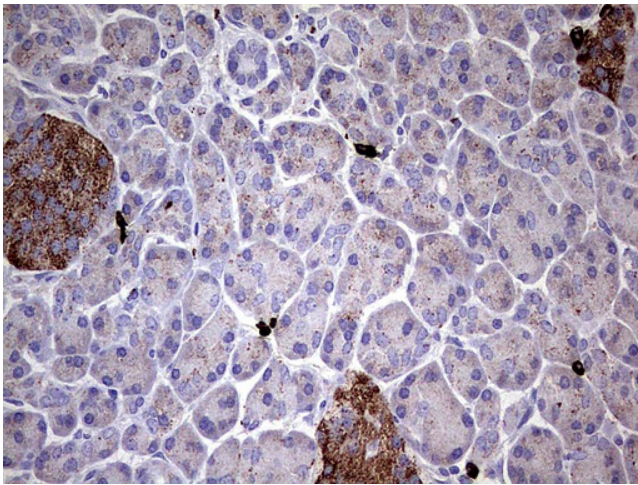
Immunohistochemical staining of paraffin-embedded Carcinoma of Human liver tissue using anti-GBA mouse monoclonal antibody. ([UM800064]; heat-induced epitope retrieval by 1mM EDTA in 10mM Tris, pH8.0, 120°C for 3min)



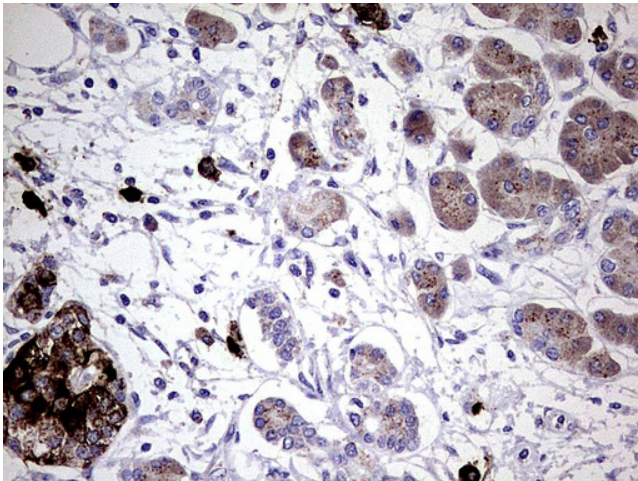
Immunohistochemical staining of paraffin-embedded Human Ovary tissue using anti-GBA mouse monoclonal antibody. ([UM800064]; heat-induced epitope retrieval by 1mM EDTA in 10mM Tris, pH8.0, 120°C for 3min)



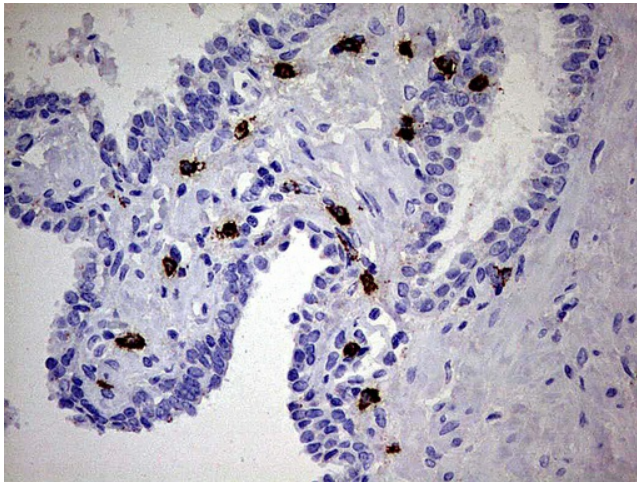
Immunohistochemical staining of paraffin-embedded Adenocarcinoma of Human ovary tissue using anti-GBA mouse monoclonal antibody. ([UM800064]; heat-induced epitope retrieval by 1mM EDTA in 10mM Tris, pH8.0, 120°C for 3min)



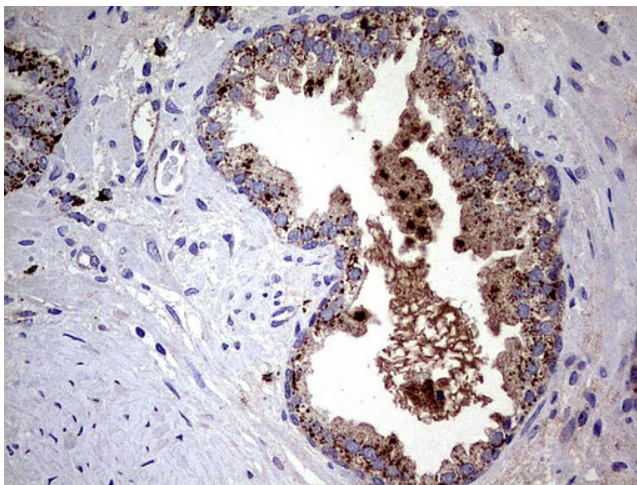
Immunohistochemical staining of paraffin-embedded Human pancreas tissue using anti-GBA mouse monoclonal antibody. ([UM800064]; heat-induced epitope retrieval by 1mM EDTA in 10mM Tris, pH8.0, 120°C for 3min)



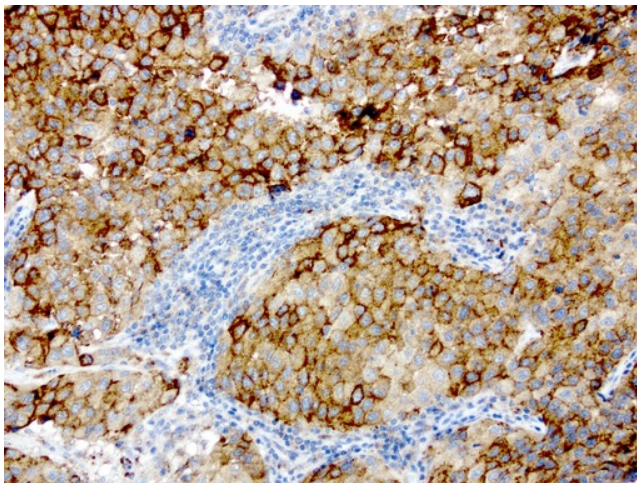
Immunohistochemical staining of paraffin-embedded Carcinoma of Human pancreas tissue using anti-GBA mouse monoclonal antibody. ([UM800064]; heat-induced epitope retrieval by 1mM EDTA in 10mM Tris, pH8.0, 120°C for 3min)



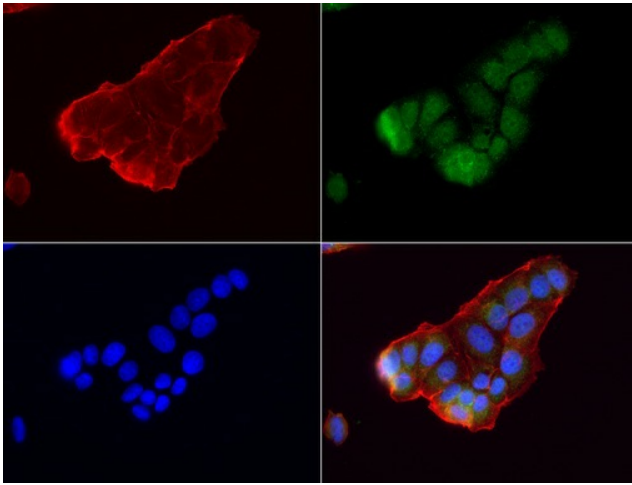
Immunohistochemical staining of paraffin-embedded Human prostate tissue using anti-GBA mouse monoclonal antibody. ([UM800064]; heat-induced epitope retrieval by 1mM EDTA in 10mM Tris, pH8.0, 120°C for 3min)



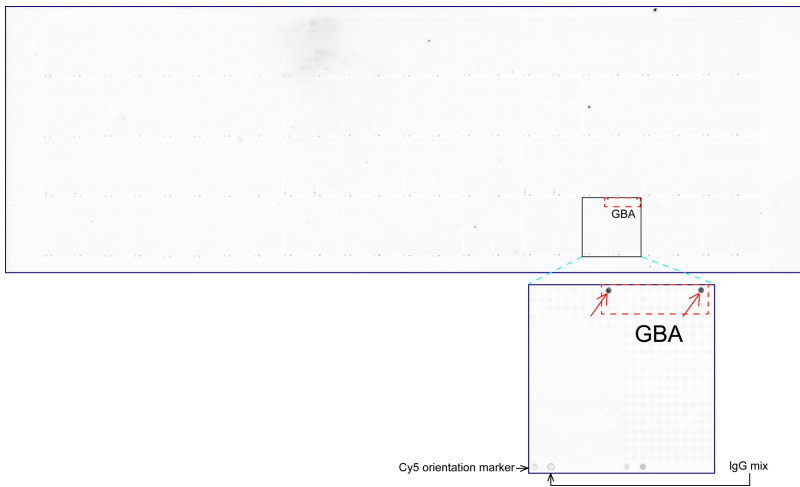
Immunohistochemical staining of paraffin-embedded Carcinoma of Human prostate tissue using anti-GBA mouse monoclonal antibody. ([UM800064]; heat-induced epitope retrieval by 1mM EDTA in 10mM Tris, pH8.0, 120°C for 3min)



Immunohistochemical staining of paraffin-embedded human melanoma using anti-GBA clone UMAB171 mouse monoclonal antibody at 1:200 dilution of 1.0 mg/mL using Polink2 Broad HRP DAB for detection. [UM800064] requires HIER with with Accel 3in1 EDTA solution pH8.7 at 110°C for 3min using pressure chamber/cooker. The tumor cells shows strong membrane and cytoplasmic staining.



Immunofluorescent staining of MCF-7 cells using anti-GBA mouse monoclonal antibody ([UM800064], green, 1:50). Actin filaments were labeled with Alexa Fluor® 594 Phalloidin (red), and nuclear with DAPI (blue).



OriGene overexpression protein microarray chip was immunostained with UltraMAB anti-GBA mouse monoclonal antibody ([UM800064]). The positive reactive proteins are highlighted with two red arrows in the enlarged subarray. All the positive controls spotted in this subarray are also labeled for clarification.