

Product datasheet for **UM800057**

TTF1 (NKX2-1) Mouse Monoclonal Antibody [Clone ID: UMAB162]

Product data:

Product Type:	Primary Antibodies
Clone Name:	UMAB162
Applications:	IHC
Recommended Dilution:	IHC 1:200
Reactivity:	Human, Mouse, Rat
Host:	Mouse
Isotype:	IgG1
Clonality:	Monoclonal
Immunogen:	Full length human recombinant protein of human NKX2-1 (NP_003308) produced in E.coli.
Formulation:	PBS (pH 7.3) containing 1% BSA, 50% glycerol and 0.02% sodium azide.
Concentration:	0.5~1.0 mg/ml (Lot Dependent)
Purification:	Purified from mouse ascites fluids or tissue culture supernatant by affinity chromatography (protein A/G)
Conjugation:	Unconjugated
Storage:	Store at -20°C as received.
Stability:	Stable for 12 months from date of receipt.
Predicted Protein Size:	38.4 kDa
Gene Name:	NK2 homeobox 1
Database Link:	NP_003308 Entrez Gene 21869 Mouse Entrez Gene 25628 Rat Entrez Gene 7080 Human P43699



[View online »](#)

Background:

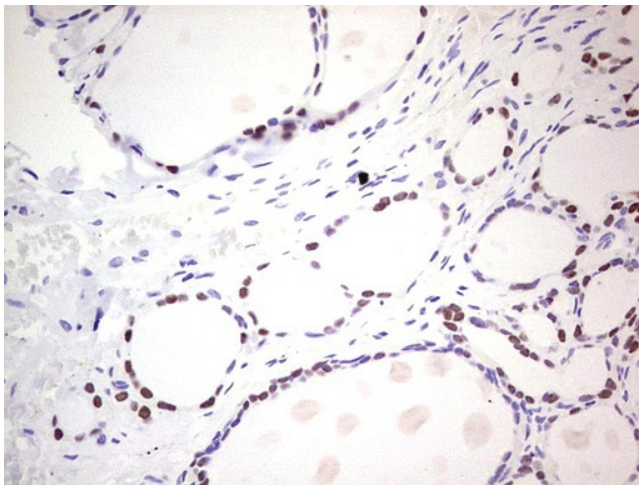
This gene encodes a protein initially identified as a thyroid-specific transcription factor. The encoded protein binds to the thyroglobulin promoter and regulates the expression of thyroid-specific genes but has also been shown to regulate the expression of genes involved in morphogenesis. Mutations and deletions in this gene are associated with benign hereditary chorea, choreoathetosis, congenital hypothyroidism, and neonatal respiratory distress, and may be associated with thyroid cancer. Multiple transcript variants encoding different isoforms have been found for this gene. This gene shares the symbol/alias 'TTF1' with another gene, transcription termination factor 1, which plays a role in ribosomal gene transcription. [provided by RefSeq, Feb

Synonyms:

BCH; BHC; NK-2; NKX2.1; NKX2A; NMTC1; T/EBP; TEBP; TITF1; TTF-1; TTF1

Protein Families:

Druggable Genome, ES Cell Differentiation/IPS, Transcription Factors

Product images:

Immunohistochemical staining of paraffin-embedded Human thyroid tissue using anti-NKX2-1 Mouse monoclonal antibody. (UM800057, heat-induced epitope retrieval by 1mM EDTA in 10mM Tris, pH8.0, 120°C for 3min)