

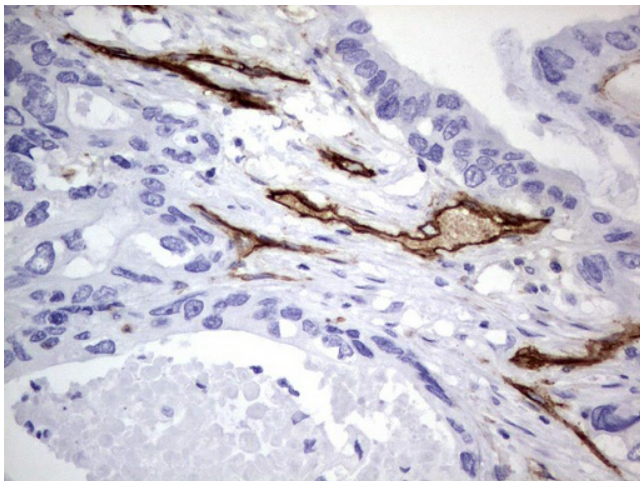
Product datasheet for **UM800052CF**

CD146 (MCAM) Mouse Monoclonal Antibody [Clone ID: UMAB155]

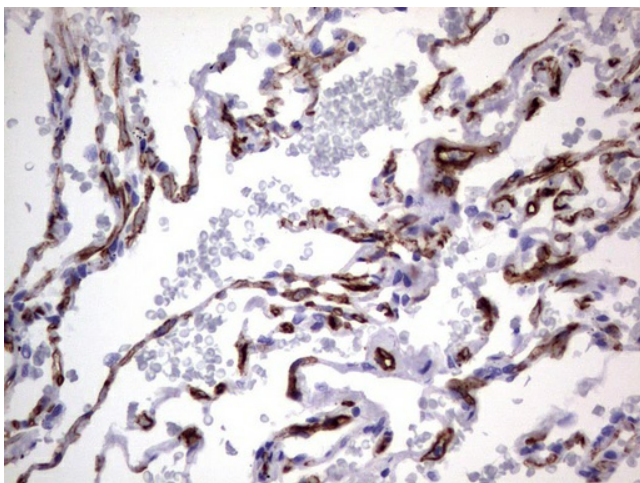
Product data:

| | |
|------------------------|--|
| Product Type: | Primary Antibodies |
| Clone Name: | UMAB155 |
| Applications: | IHC, WB |
| Recommended Dilution: | WB 1:2000, IHC 1:200 |
| Reactivity: | Human |
| Host: | Mouse |
| Isotype: | IgG2b |
| Clonality: | Monoclonal |
| Immunogen: | Full length human recombinant protein of human MCAM (NP_006491) produced in HEK293T cell. |
| Formulation: | Lyophilized powder (original buffer 1X PBS, pH 7.3, 8% trehalose) |
| Reconstitution Method: | For reconstitution, we recommend adding 100uL distilled water to a final antibody concentration of about 1 mg/mL. To use this carrier-free antibody for conjugation experiment, we strongly recommend performing another round of desalting process. (OriGene recommends Zeba Spin Desalting Columns, 7KMWCO from Thermo Scientific) |
| Purification: | Purified from mouse ascites fluids or tissue culture supernatant by affinity chromatography (protein A/G) |
| Conjugation: | Unconjugated |
| Storage: | Store at -20°C as received. |
| Stability: | Stable for 12 months from date of receipt. |
| Gene Name: | melanoma cell adhesion molecule |
| Database Link: | NP_006491 Entrez Gene 4162 Human P43121 |
| Synonyms: | CD146; MUC18 |
| Protein Families: | Druggable Genome, ES Cell Differentiation/IPS, Transmembrane |

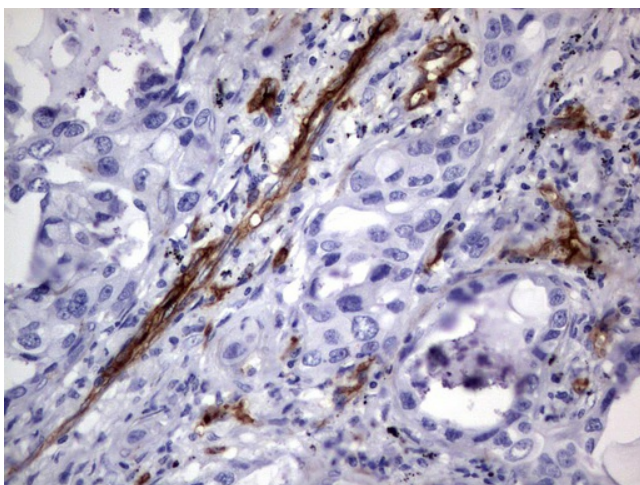
[View online »](#)

Product images:

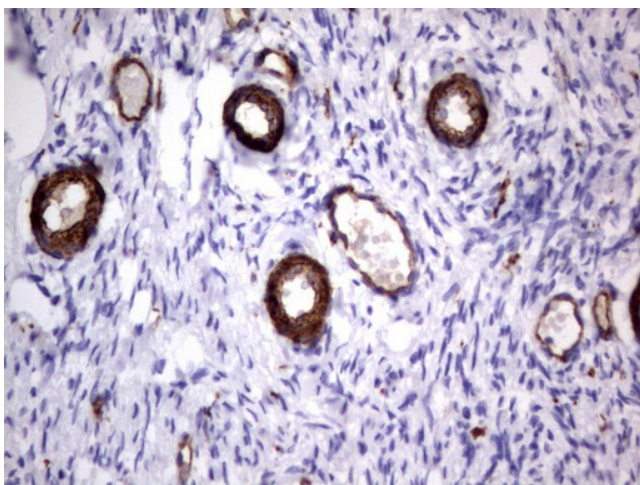
Immunohistochemical staining of paraffin-embedded Adenocarcinoma of Human colon tissue using anti-MCAM mouse monoclonal antibody. ([UM800052]; heat-induced epitope retrieval by 1mM EDTA in 10mM Tris, pH9.0, 120°C for 3min)



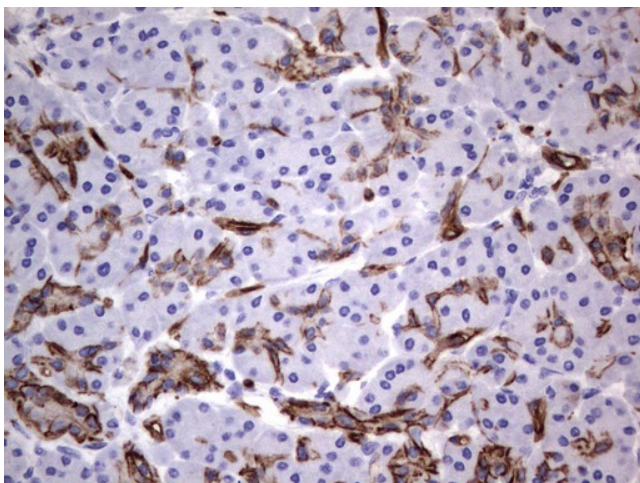
Immunohistochemical staining of paraffin-embedded Human lung tissue using anti-MCAM mouse monoclonal antibody. ([UM800052]; heat-induced epitope retrieval by 1mM EDTA in 10mM Tris, pH9.0, 120°C for 3min)



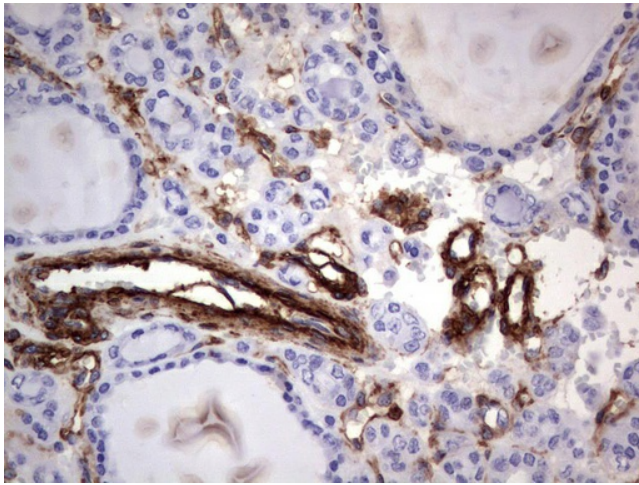
Immunohistochemical staining of paraffin-embedded Carcinoma of Human lung tissue using anti-MCAM mouse monoclonal antibody. ([UM800052]; heat-induced epitope retrieval by 1mM EDTA in 10mM Tris, pH9.0, 120°C for 3min)



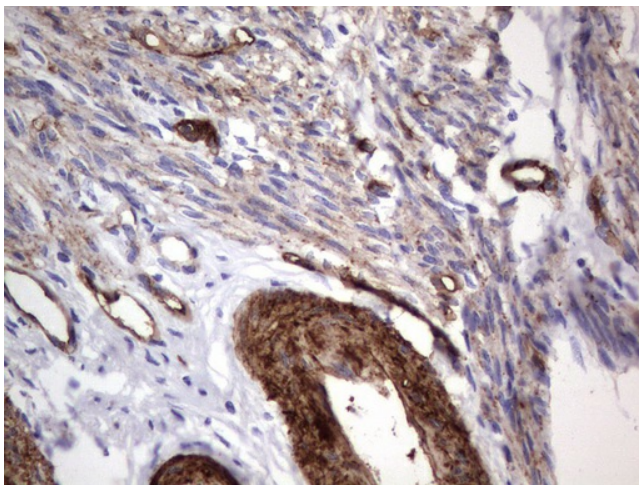
Immunohistochemical staining of paraffin-embedded Human Ovary tissue using anti-MCAM mouse monoclonal antibody. ([UM800052]; heat-induced epitope retrieval by 1mM EDTA in 10mM Tris, pH9.0, 120°C for 3min)



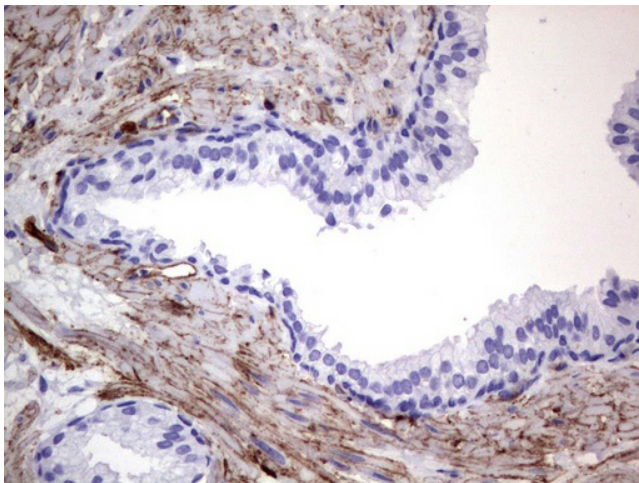
Immunohistochemical staining of paraffin-embedded Human pancreas tissue using anti-MCAM mouse monoclonal antibody. ([UM800052]; heat-induced epitope retrieval by 1mM EDTA in 10mM Tris, pH9.0, 120°C for 3min)



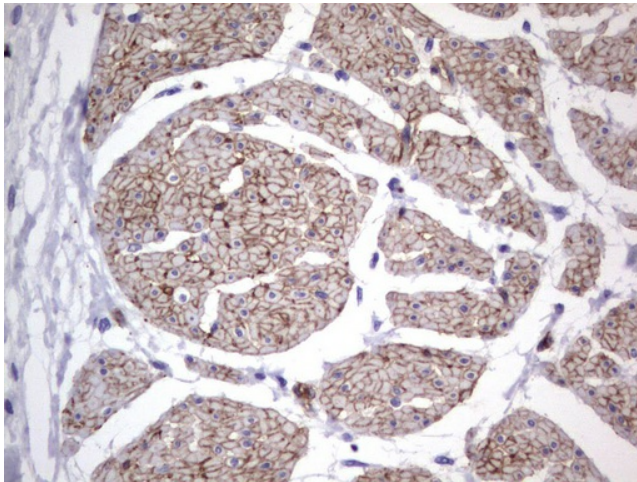
Immunohistochemical staining of paraffin-embedded Carcinoma of Human thyroid tissue using anti-MCAM mouse monoclonal antibody. ([UM800052]; heat-induced epitope retrieval by 1mM EDTA in 10mM Tris, pH9.0, 120°C for 3min)



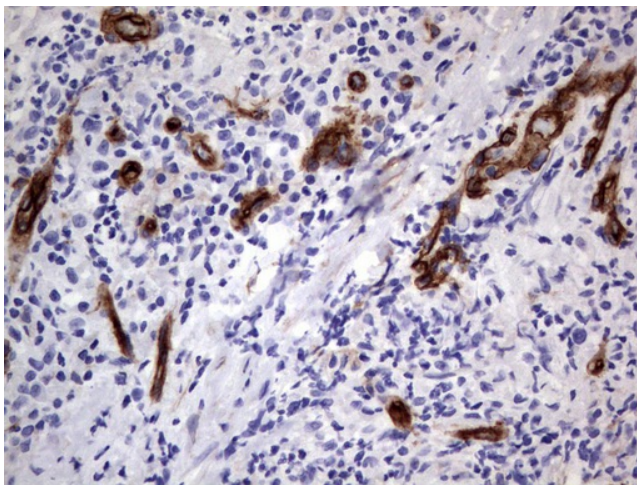
Immunohistochemical staining of paraffin-embedded Human endometrium tissue using anti-MCAM mouse monoclonal antibody. ([UM800052]; heat-induced epitope retrieval by 1mM EDTA in 10mM Tris, pH9.0, 120°C for 3min)



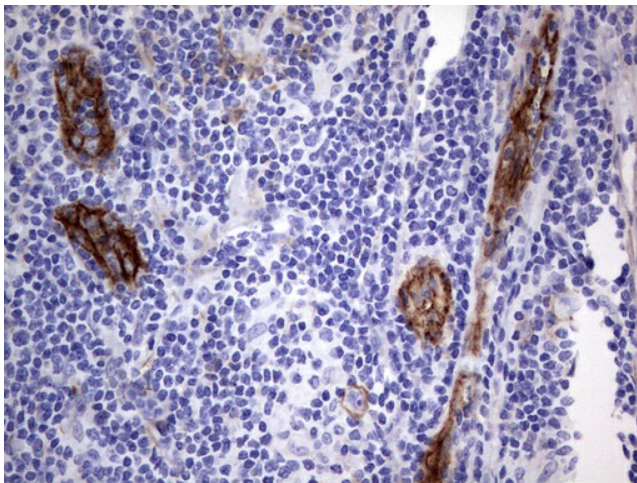
Immunohistochemical staining of paraffin-embedded Carcinoma of Human prostate tissue using anti-MCAM mouse monoclonal antibody. ([UM800052]; heat-induced epitope retrieval by 1mM EDTA in 10mM Tris, pH9.0, 120°C for 3min)



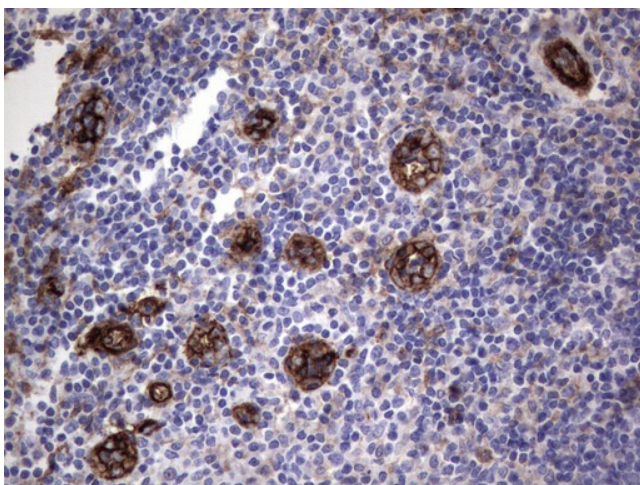
Immunohistochemical staining of paraffin-embedded Human bladder tissue using anti-MCAM mouse monoclonal antibody. ([UM800052]; heat-induced epitope retrieval by 1mM EDTA in 10mM Tris, pH9.0, 120°C for 3min)



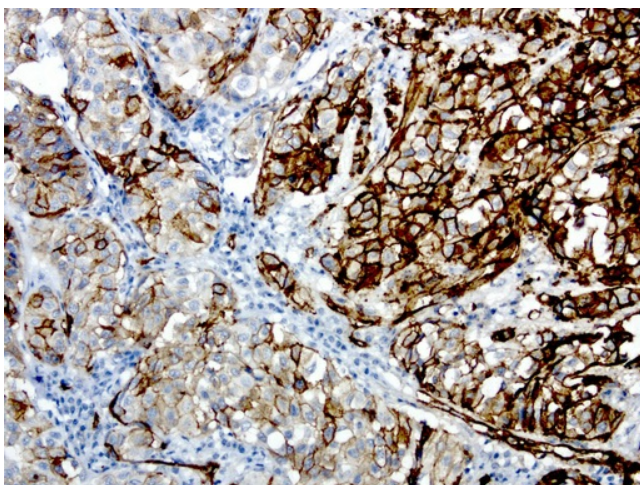
Immunohistochemical staining of paraffin-embedded Human lymph node tissue using anti-MCAM mouse monoclonal antibody. ([UM800052]; heat-induced epitope retrieval by 1mM EDTA in 10mM Tris, pH9.0, 120°C for 3min)



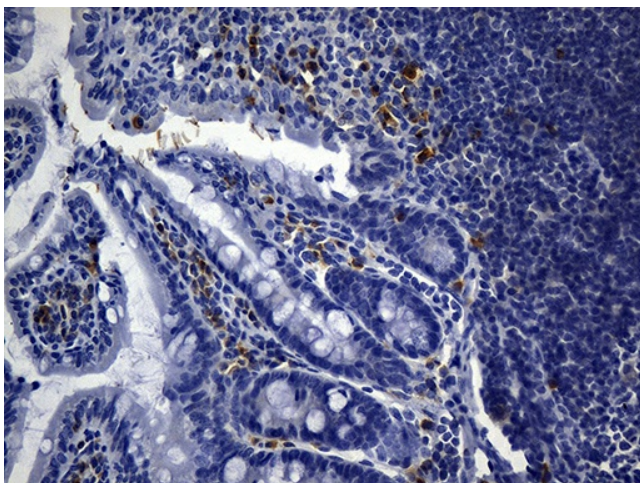
Immunohistochemical staining of paraffin-embedded Human lymphoma tissue using anti-MCAM mouse monoclonal antibody. ([UM800052]; heat-induced epitope retrieval by 1mM EDTA in 10mM Tris, pH9.0, 120°C for 3min)



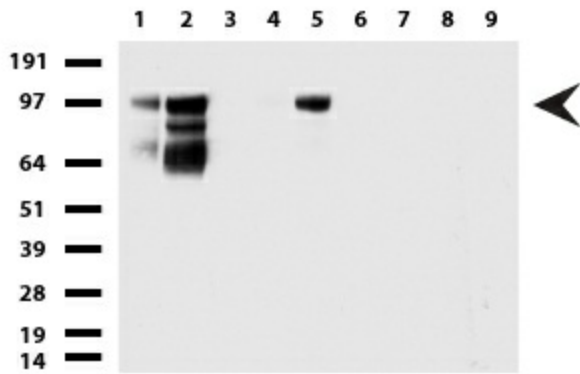
Immunohistochemical staining of paraffin-embedded Human tonsil using anti-MCAM mouse monoclonal antibody. ([UM800052]; heat-induced epitope retrieval by 1mM EDTA in 10mM Tris, pH9.0, 120°C for 3min)



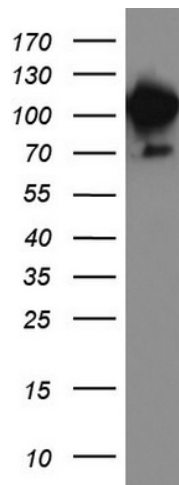
Immunohistochemical staining of paraffin-embedded human melanoma using anti-CD146 (MCAM) clone UMAB155 mouse monoclonal antibody at 1:200 dilution of 1.0 mg/mL using Polink2 Broad HRP DAB for detection. [UM800052] requires HIER with with Accel 3in1 EDTA solution pH8.7 at 110°C for 3min using pressure chamber/cooker. The tumor cells shows strong membraneous and cytoplasmic staining.



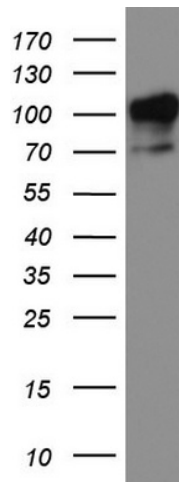
Immunohistochemical staining of paraffin-embedded mouse ascending colon tissue using anti-CD146 clone UMAB155 mouse monoclonal antibody. (Heat-induced epitope retrieval by 1mM EDTA in 10mM Tris buffer (pH8.5) at 120°C for 3min, [UM800052]) (1:300).



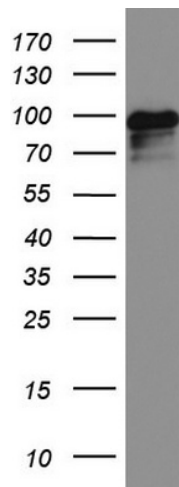
Western blot of cell lysates (35ug) from 9 different cell lines (1: HepG2, 2: HeLa, 3: SV-T2, 4: A549, 5: COS7, 6: Jurkat, 7: MDCK, 8: PC-12, 9: MCF7). Dilution: 1:500



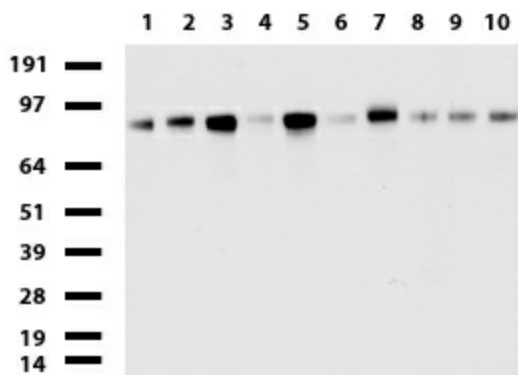
Western blot analysis of HEK293 cell lysate (35ug) by using anti-MCAM monoclonal antibody.



Western blot analysis of HeLa cell lysate (35ug) by using anti-MCAM monoclonal antibody.



Western blot analysis of MALME3M cell lysate (35ug) by using anti-MCAM monoclonal antibody.



Western blot of human tissue lysates (15ug) from 10 different tissues (1: Testis, 2: Omentum, 3: Uterus, 4: Breast, 5: Brain, 6: Liver, 7: Ovary, 8: Thyroid, 9: Colon, 10: Spleen). Dilution: 1:500.