

## Product datasheet for **UM800033**

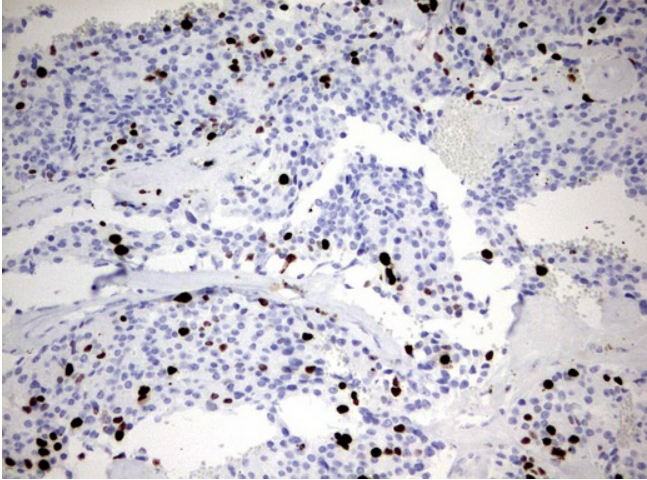
### **Ki67 (MKI67) Mouse Monoclonal Antibody [Clone ID: UMAB107]**

#### **Product data:**

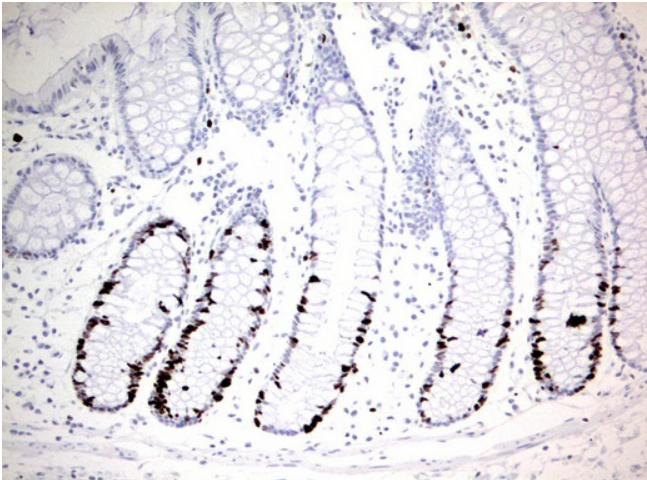
<b>Product Type:</b>	Primary Antibodies
<b>Clone Name:</b>	UMAB107
<b>Applications:</b>	IF, IHC, WB
<b>Recommended Dilution:</b>	IHC: 1:300
<b>Reactivity:</b>	Human
<b>Host:</b>	Mouse
<b>Isotype:</b>	IgG2a
<b>Clonality:</b>	Monoclonal
<b>Immunogen:</b>	Human recombinant protein fragment corresponding to amino acids 1160-1493 of human MKI67 (NP_002408) produced in E.coli.
<b>Formulation:</b>	PBS (pH 7.3) containing 1% BSA, 50% glycerol and 0.02% sodium azide.
<b>Concentration:</b>	0.5~1.0 mg/ml (Lot Dependent)
<b>Purification:</b>	Purified from mouse ascites fluids or tissue culture supernatant by affinity chromatography (protein A/G)
<b>Conjugation:</b>	Unconjugated
<b>Storage:</b>	Store at -20°C as received.
<b>Stability:</b>	Stable for 12 months from date of receipt.
<b>Gene Name:</b>	marker of proliferation Ki-67
<b>Database Link:</b>	<a href="#">NP_002408</a> <a href="#">Entrez Gene 4288 Human</a> <a href="#">P46013</a>
<b>Background:</b>	This gene encodes a nuclear protein that is associated with and may be necessary for cellular proliferation. Alternatively spliced transcript variants have been described. A related pseudogene exists on chromosome X. [provided by RefSeq, Mar 2009]
<b>Synonyms:</b>	KIA; MIB-; MIB-1; PPP1R105
<b>Protein Families:</b>	Druggable Genome, ES Cell Differentiation/IPS



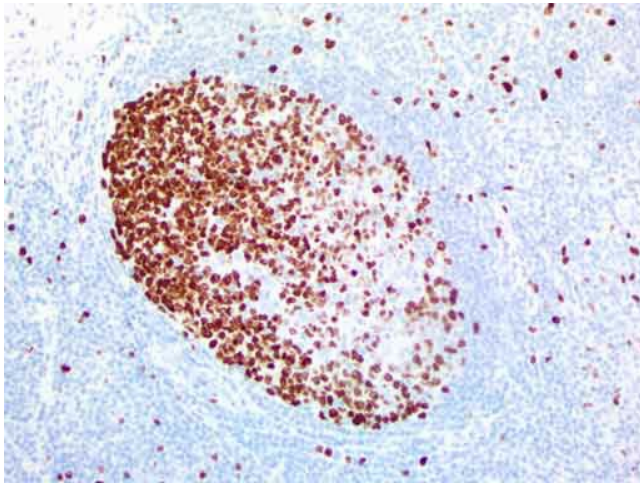
[View online »](#)

**Product images:**

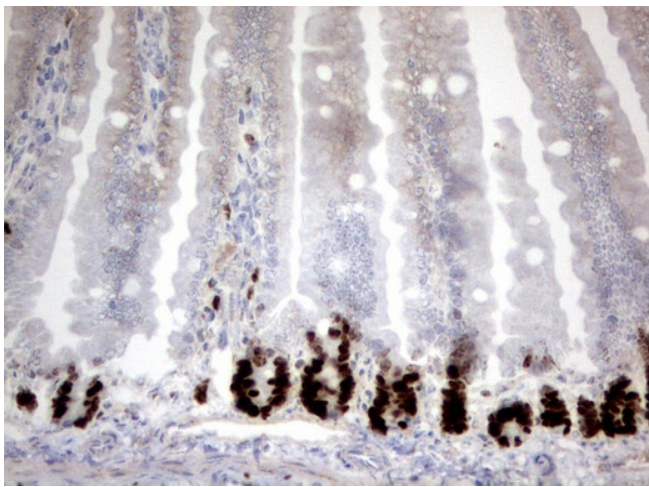
Immunohistochemical staining of paraffin-embedded Adenocarcinoma of Human breast tissue using anti-MKI67 mouse monoclonal antibody. (UM800033; heat-induced epitope retrieval by 10mM citric buffer, pH9.0, 120°C for 3min)



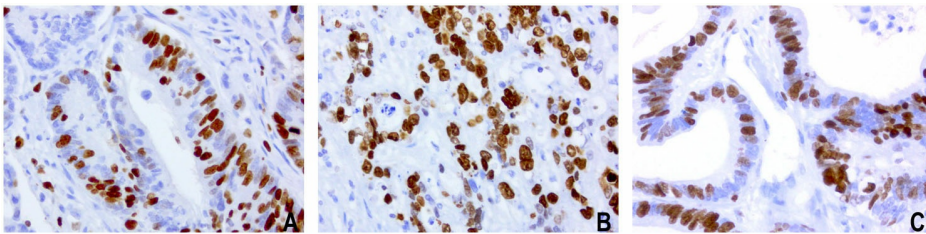
Immunohistochemical staining of paraffin-embedded Human colon tissue using anti-MKI67 mouse monoclonal antibody. (UM800033; heat-induced epitope retrieval by 10mM citric buffer, pH9.0, 120°C for 3min)



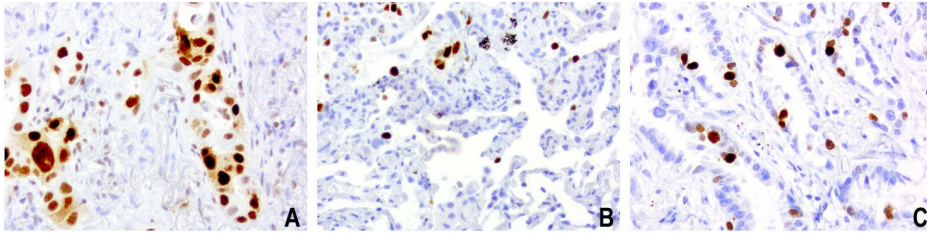
Immunohistochemical staining of paraffin-embedded normal human tonsil tissue using anti-MKI67 mouse monoclonal antibody. (UM800033 at 1ug/ml for 30 min at RT; heat-induced epitope retrieval by 10mM citric buffer, pH6.0, 100°C for 20min; )



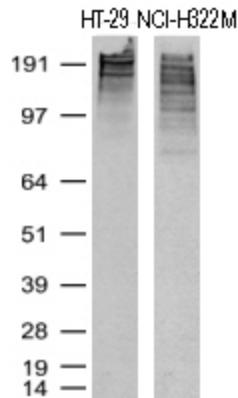
Immunohistochemical staining of paraffin-embedded mouse colon tissue using anti-MKI67 mouse monoclonal antibody. (UM800033; heat-induced epitope retrieval by 10mM citric buffer, pH9.0, 120°C for 3min)



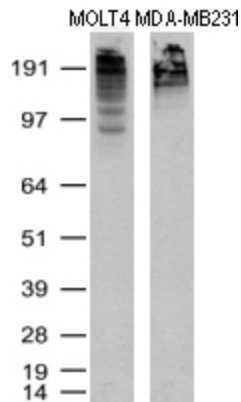
Immunohistochemical staining of paraffin-embedded of 3 human colon cancer using anti-Ki67 clone UMAB107 mouse monoclonal antibody at 1:1000 dilution of 0.5mg/mL and detection with Polink2 Broad HRP DAB. UM800033 requires heat-induced epitope retrieval with Citrate pH6.0 in a pressure chamber/cooker high 3min. The composite image of 3 human colon cancer all show strong nuclear staining in the tumor cells.



Immunohistochemical staining of paraffin-embedded of 3 human lung cancer using anti-Ki67 clone UMAB107 mouse monoclonal antibody at 1:1000 dilution of 0.5mg/mL and detection with Polink2 Broad HRP DAB. UM800033 requires heat-induced epitope retrieval with Citrate pH6.0 in a pressure chamber/cooker high 3min. The composite image of 3 human lung cancer all show strong nuclear staining in the tumor cells.

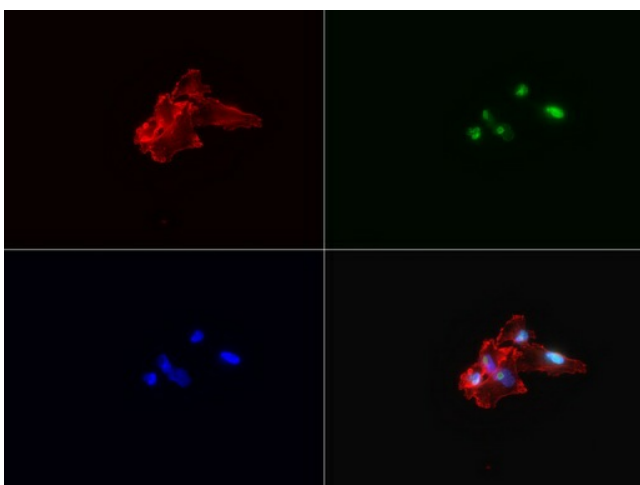


Western Blot analysis of HT-29 and NCI-H322M cell lysates (35ug) by using anti-Ki67 monoclonal antibody (Clone UMAB107)



Western Blot analysis of MOLT-4 and MDA-MB231 cell lysates (35ug) by using anti-Ki67 monoclonal antibody (Clone UMAB107)





Immunofluorescent staining of MDA-MB-231 cells using anti-Ki67 mouse monoclonal antibody (UM800033, green, 1:100). Actin filaments were labeled with TRITC-phalloidin (red), and nuclear with DAPI (blue).