

Product datasheet for **UM800027CF**

Thymidine Phosphorylase (TYMP) Mouse Monoclonal Antibody [Clone ID: UMAB97]

Product data:

| | |
|-------------------------|--|
| Product Type: | Primary Antibodies |
| Clone Name: | UMAB97 |
| Applications: | IHC, WB |
| Recommended Dilution: | IHC 1:100 |
| Reactivity: | Human |
| Host: | Mouse |
| Isotype: | IgG1 |
| Clonality: | Monoclonal |
| Immunogen: | Human recombinant protein fragment corresponding to amino acids 311-482 of human TYMP (NP_001944) produced in E.coli. |
| Formulation: | Lyophilized powder (original buffer 1X PBS, pH 7.3, 8% trehalose) |
| Reconstitution Method: | For reconstitution, we recommend adding 100uL distilled water to a final antibody concentration of about 1 mg/mL. To use this carrier-free antibody for conjugation experiment, we strongly recommend performing another round of desalting process. (OriGene recommends Zeba Spin Desalting Columns, 7KMWCO from Thermo Scientific) |
| Purification: | Purified from mouse ascites fluids or tissue culture supernatant by affinity chromatography (protein A/G) |
| Conjugation: | Unconjugated |
| Storage: | Store at -20°C as received. |
| Stability: | Stable for 12 months from date of receipt. |
| Predicted Protein Size: | 49.8 kDa |
| Gene Name: | thymidine phosphorylase |
| Database Link: | NP_001944 Entrez Gene 1890 Human P19971 |



[View online »](#)

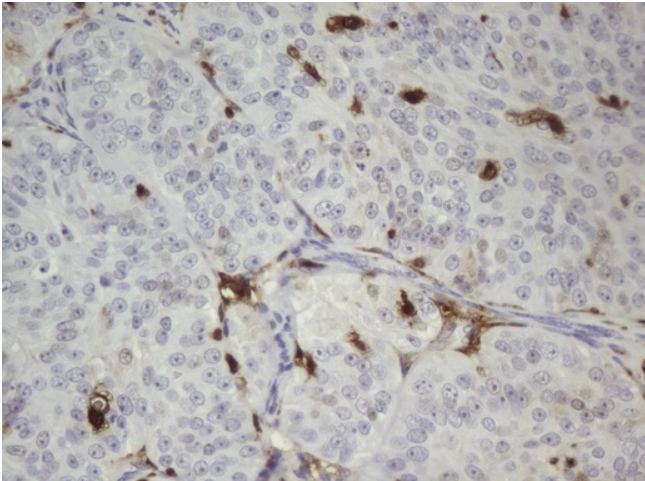
Background: This gene encodes an angiogenic factor which promotes angiogenesis in vivo and stimulates the in vitro growth of a variety of endothelial cells. It has a highly restricted target cell specificity acting only on endothelial cells. Mutations in this gene have been associated with mitochondrial neurogastrointestinal encephalomyopathy. Multiple alternatively spliced transcript variants have been identified. [provided by RefSeq, Apr 2012]

Synonyms: ECGF; ECGF1; hPD-ECGF; MEDPS1; MNGIE; MTDPS1; PDECGF; TP

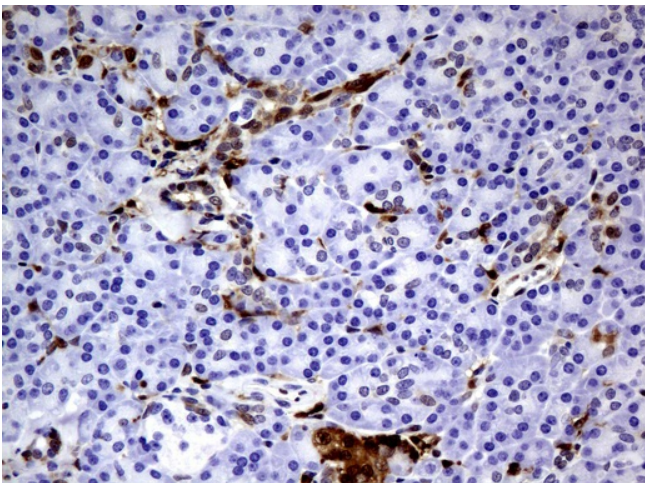
Protein Families: Druggable Genome

Protein Pathways: Bladder cancer, Drug metabolism - other enzymes, Metabolic pathways, Pyrimidine metabolism

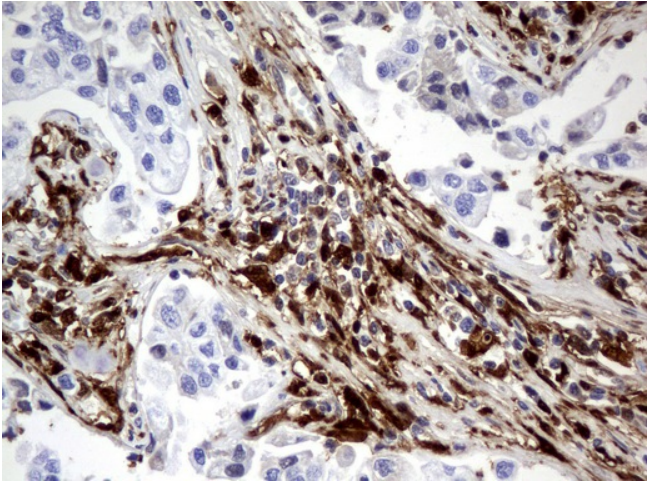
Product images:



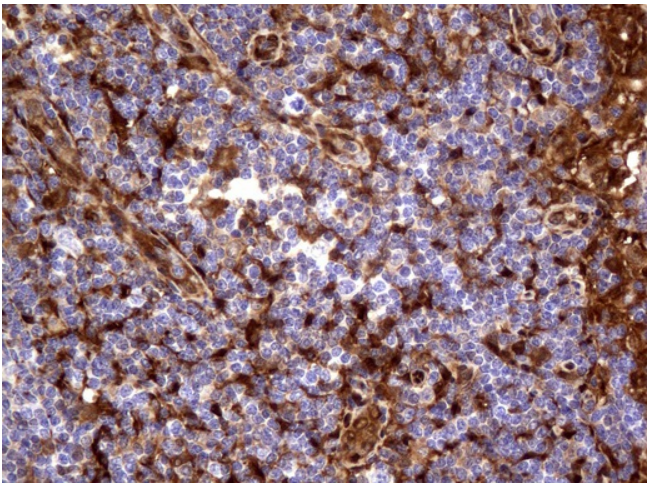
Immunohistochemical staining of paraffin-embedded Adenocarcinoma of Human ovary tissue using anti-TYMP mouse monoclonal antibody. ([UM800027]; heat-induced epitope retrieval by 10mM citric buffer, pH6.0, 120°C for 3min)



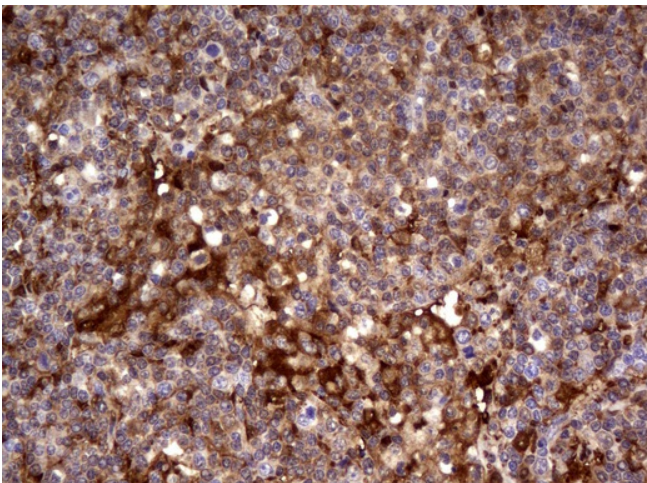
Immunohistochemical staining of paraffin-embedded Human pancreas tissue using anti-TYMP mouse monoclonal antibody. ([UM800027]; heat-induced epitope retrieval by 10mM citric buffer, pH6.0, 120°C for 3min)



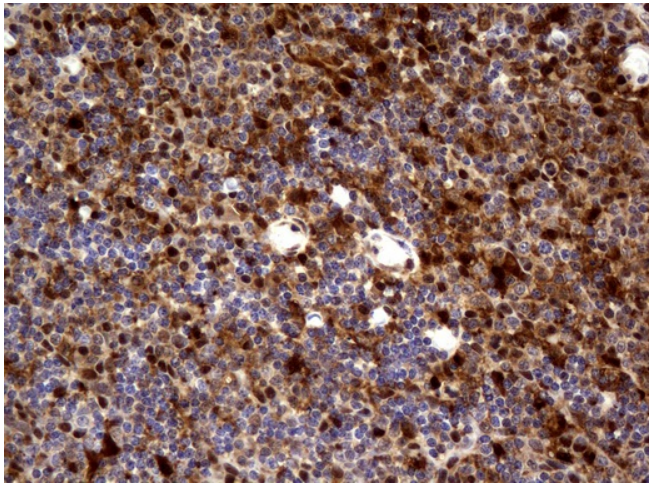
Immunohistochemical staining of paraffin-embedded Carcinoma of Human bladder tissue using anti-TYMP mouse monoclonal antibody. ([UM800027]; heat-induced epitope retrieval by 10mM citric buffer, pH6.0, 120°C for 3min)



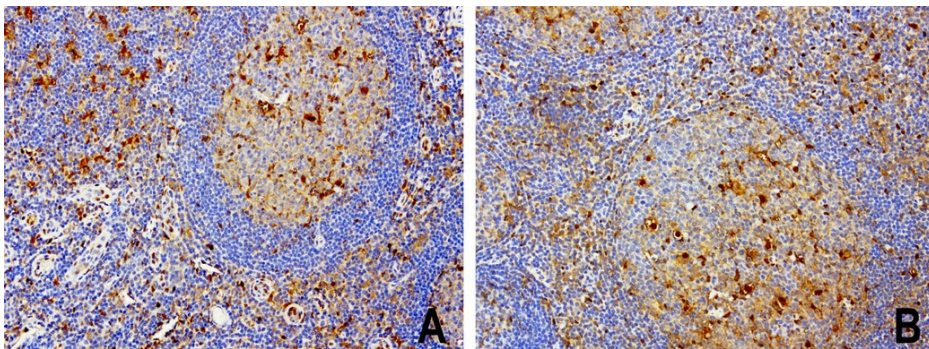
Immunohistochemical staining of paraffin-embedded Human lymph node tissue using anti-TYMP mouse monoclonal antibody. ([UM800027]; heat-induced epitope retrieval by 10mM citric buffer, pH6.0, 120°C for 3min)



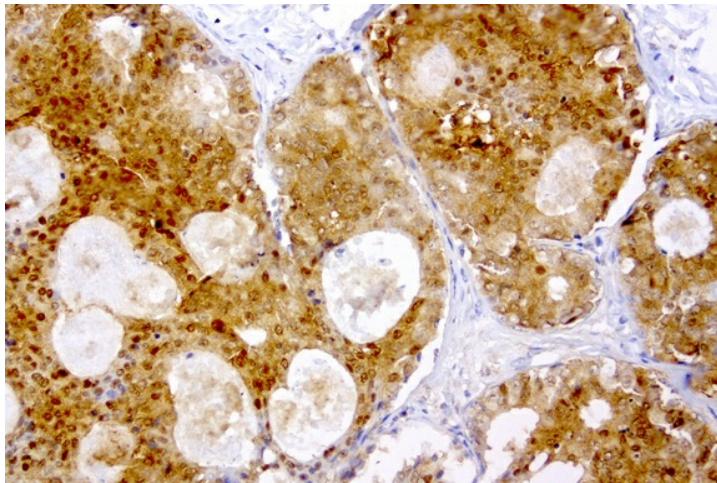
Immunohistochemical staining of paraffin-embedded Human lymphoma tissue using anti-TYMP mouse monoclonal antibody. ([UM800027]; heat-induced epitope retrieval by 10mM citric buffer, pH6.0, 120°C for 3min)



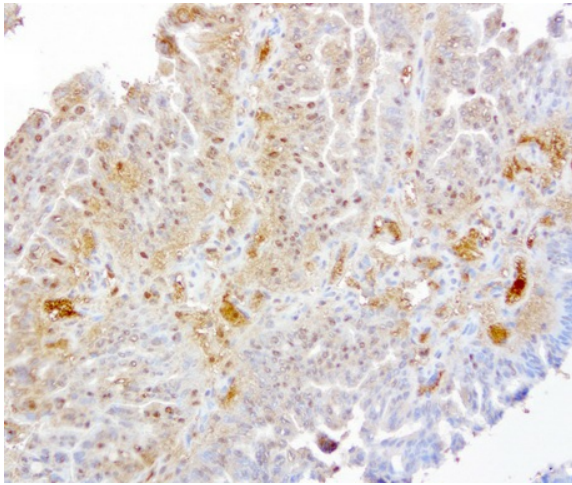
Immunohistochemical staining of paraffin-embedded Human tonsil using anti-TYMP mouse monoclonal antibody. ([UM800027]; heat-induced epitope retrieval by 10mM citric buffer, pH6.0, 120°C for 3min)



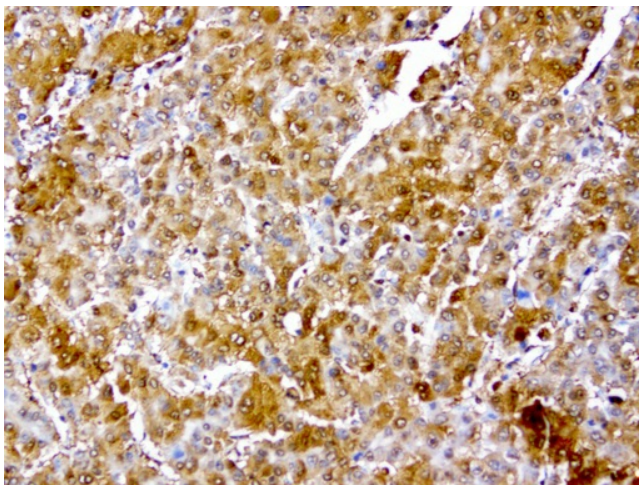
Immunohistochemical staining of paraffin-embedded human tonsil using anti-TYMP clone UMAB97 mouse monoclonal antibody ([UM800027]) at 1:200 with Polink2 Broad HRP DAB detection kit; heat-induced epitope retrieval with GBI Citrate pH6.0 HIER buffer using pre



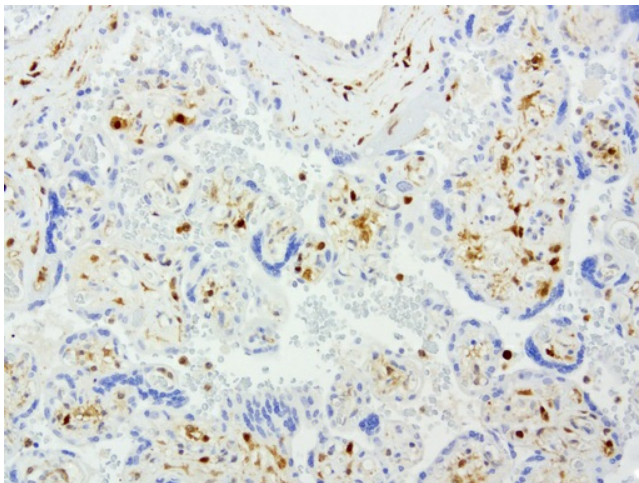
Immunohistochemical staining of paraffin-embedded human breast cancer using anti-TYMP clone UMAB97 mouse monoclonal antibody ([UM800027]) at 1:200 with Polink2 Broad HRP DAB detection kit; heat-induced epitope retrieval with GBI Citrate pH6.0 HIER buffer us



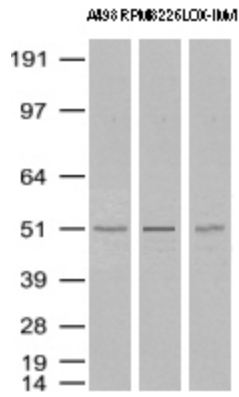
Immunohistochemical staining of paraffin-embedded human gastric cancer using anti-TYMP clone UMAB97 mouse monoclonal antibody ([UM800027]) at 1:200 with Polink2 Broad HRP DAB detection kit; heat-induced epitope retrieval with GBI Citrate pH6.0 HIER buffer u



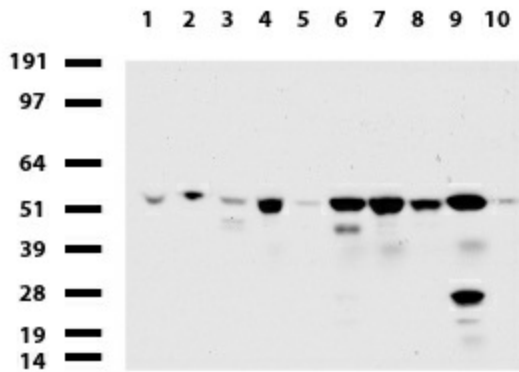
Immunohistochemical staining of paraffin-embedded human liver cancer using anti-TYMP clone UMAB97 mouse monoclonal antibody ([UM800027]) at 1:200 with Polink2 Broad HRP DAB detection kit; heat-induced epitope retrieval with GBI Citrate pH6.0 HIER buffer usi



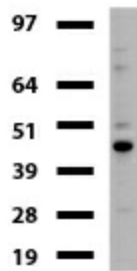
Immunohistochemical staining of paraffin-embedded human placenta using anti-TYMP clone UMAB97 mouse monoclonal antibody ([UM800027]) at 1:200 with Polink2 Broad HRP DAB detection kit; heat-induced epitope retrieval with GBI Citrate pH6.0 HIER buffer using p



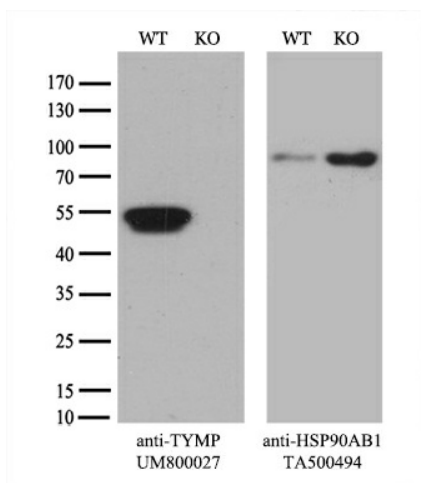
Western Blot analysis of A498, RPMI-8226 and LOX-IMVI cell lysates (35ug) by using anti-TYMP monoclonal antibody (Clone UMAB97)



Western blot of human tissue lysates (15ug) from 10 different tissues (1: Testis, 2: Omentum, 3: Uterus, 4: Breast, 5: Brain, 6: Liver, 7: Ovary, 8: Colon, 9: Spleen, 10: Thyroid). Dilution: 1:500.



Western blot of mouse tissue lysates (20ug) from Brain. Primary antibody dilution: 1:500. Secondary antibody dilution: Mouse TrueBlot® Ultra (1:1000).



Equivalent amounts of cell lysates (10 ug per lane) of wild-type HeLa cells (WT, Cat# LC810HELA) and TYMP-Knockout HeLa cells (KO, Cat# [LC831279]) were separated by SDS-PAGE and immunoblotted with anti-TYMP monoclonal antibody [UM800027] (1:500). Then the blotted membrane was stripped and reprobed with anti-HSP90 antibody as a loading control.