

## Product datasheet for **UM800027**

### Thymidine Phosphorylase (TYMP) Mouse Monoclonal Antibody [Clone ID: UMAB97]

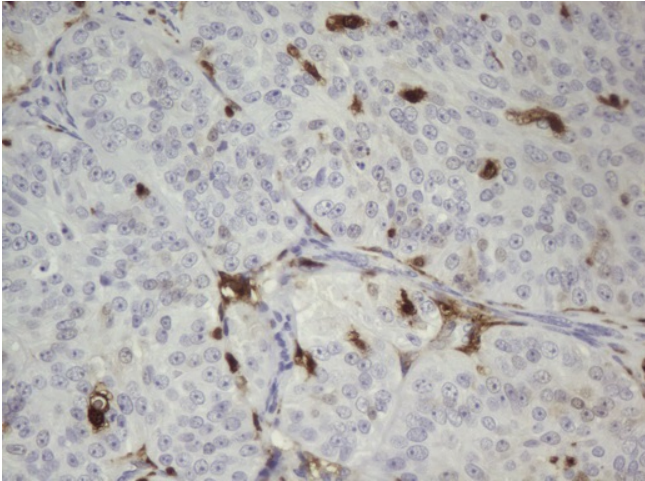
#### Product data:

Product Type:	Primary Antibodies
Clone Name:	UMAB97
Applications:	IHC, WB
Recommended Dilution:	IHC 1:100
Reactivity:	Human
Host:	Mouse
Isotype:	IgG1
Clonality:	Monoclonal
Immunogen:	Human recombinant protein fragment corresponding to amino acids 311-482 of human TYMP (NP_001944) produced in E.coli.
Formulation:	PBS (pH 7.3) containing 1% BSA, 50% glycerol and 0.02% sodium azide.
Concentration:	0.5~1.0 mg/ml (Lot Dependent)
Purification:	Purified from mouse ascites fluids or tissue culture supernatant by affinity chromatography (protein A/G)
Conjugation:	Unconjugated
Storage:	Store at -20°C as received.
Stability:	Stable for 12 months from date of receipt.
Predicted Protein Size:	49.8 kDa
Gene Name:	thymidine phosphorylase
Database Link:	<a href="#">NP_001944</a> <a href="#">Entrez Gene 1890 Human P19971</a>
Background:	This gene encodes an angiogenic factor which promotes angiogenesis in vivo and stimulates the in vitro growth of a variety of endothelial cells. It has a highly restricted target cell specificity acting only on endothelial cells. Mutations in this gene have been associated with mitochondrial neurogastrointestinal encephalomyopathy. Multiple alternatively spliced transcript variants have been identified. [provided by RefSeq, Apr 2012]

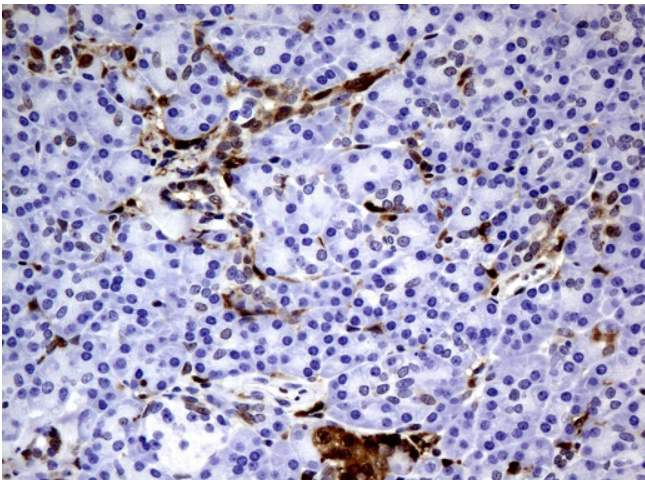


[View online »](#)

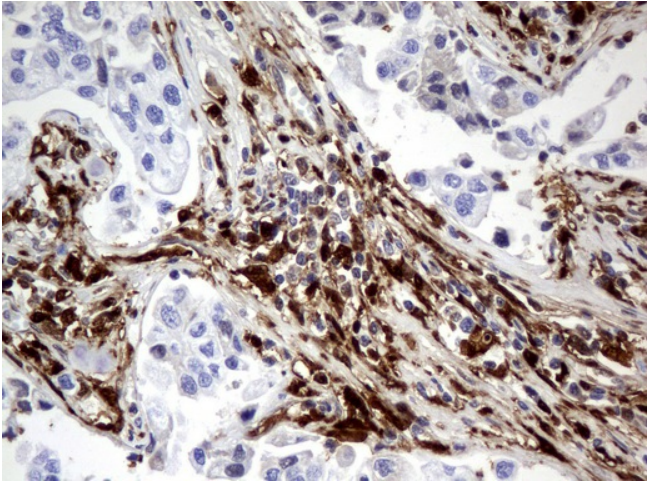
Synonyms:	ECGF; ECGF1; hPD-ECGF; MEDPS1; MNGIE; MTDPS1; PDECGF; TP
Protein Families:	Druggable Genome
Protein Pathways:	Bladder cancer, Drug metabolism - other enzymes, Metabolic pathways, Pyrimidine metabolism

**Product images:**

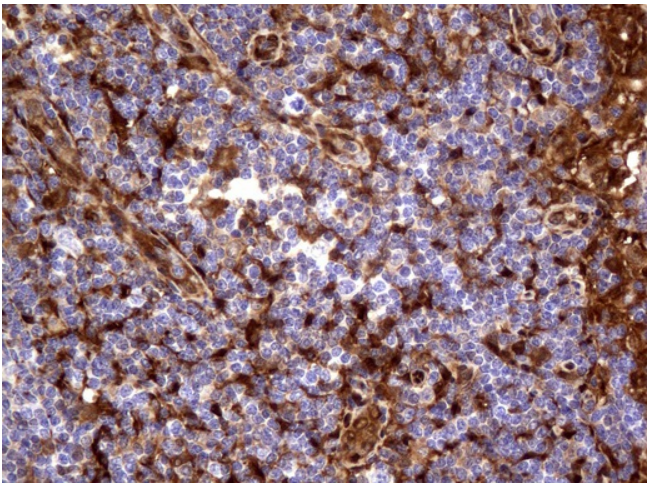
Immunohistochemical staining of paraffin-embedded Adenocarcinoma of human ovary tissue using anti-TYMP mouse monoclonal antibody. (UM800027; heat-induced epitope retrieval by 10mM citric buffer, pH6.0, 120°C for 3min)



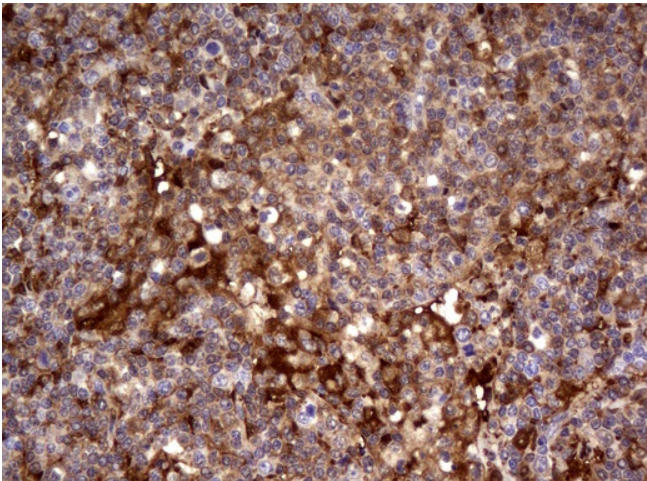
Immunohistochemical staining of paraffin-embedded Human pancreas tissue using anti-TYMP mouse monoclonal antibody. (UM800027; heat-induced epitope retrieval by 10mM citric buffer, pH6.0, 120°C for 3min)



Immunohistochemical staining of paraffin-embedded Carcinoma of Human bladder tissue using anti-TYMP mouse monoclonal antibody. (UM800027; heat-induced epitope retrieval by 10mM citric buffer, pH6.0, 120°C for 3min)

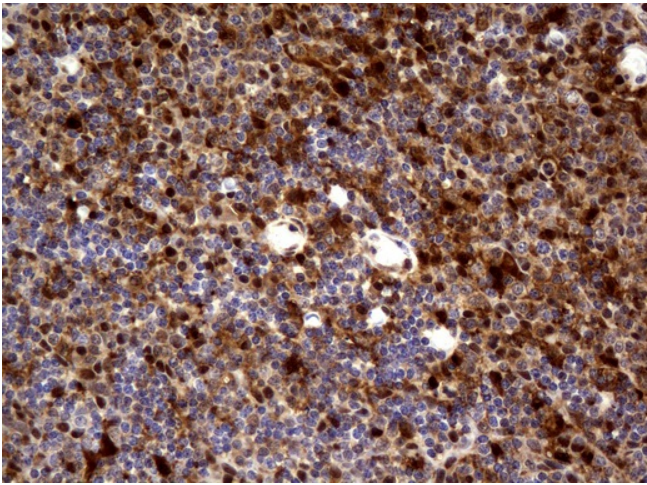


Immunohistochemical staining of paraffin-embedded Human lymph node tissue using anti-TYMP mouse monoclonal antibody. (UM800027; heat-induced epitope retrieval by 10mM citric buffer, pH6.0, 120°C for 3min)

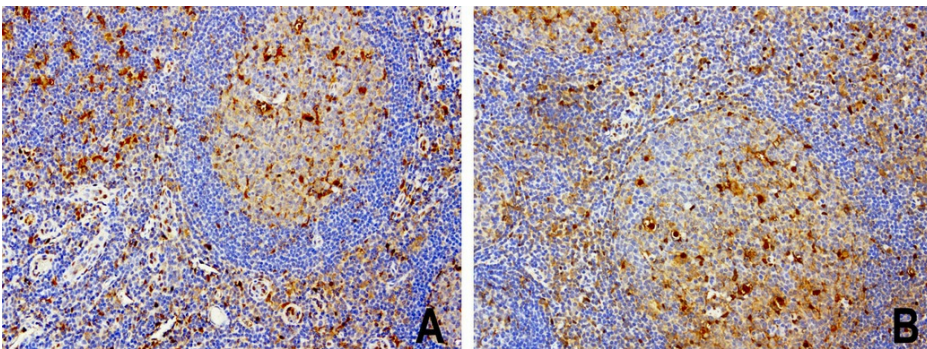


Immunohistochemical staining of paraffin-embedded Human lymphoma tissue using anti-TYMP mouse monoclonal antibody. (UM800027; heat-induced epitope retrieval by 10mM citric buffer, pH6.0, 120°C for 3min)

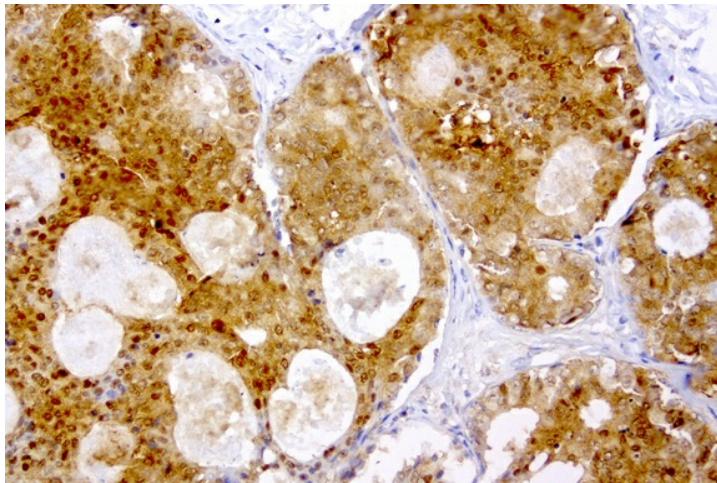




Immunohistochemical staining of paraffin-embedded Human tonsil using anti-TYMP mouse monoclonal antibody. (UM800027; heat-induced epitope retrieval by 10mM citric buffer, pH6.0, 120°C for 3min)

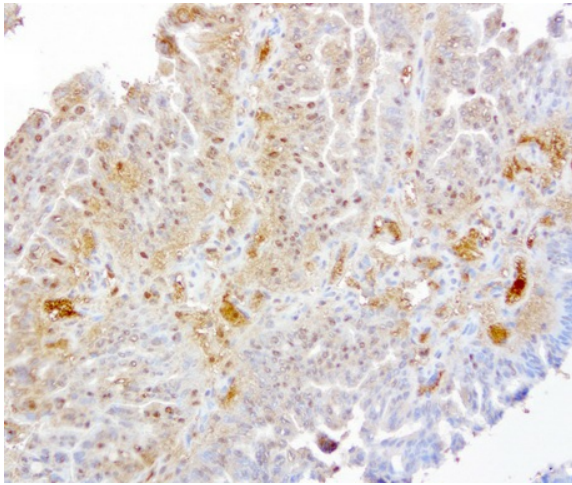


Immunohistochemical staining of paraffin-embedded human tonsil using anti-TYMP clone UMAB97 mouse monoclonal antibody (UM800027) at 1:200 with Polink2 Broad HRP DAB detection kit; heat-induced epitope retrieval with GBI Citrate pH6.0 HIER buffer using pre

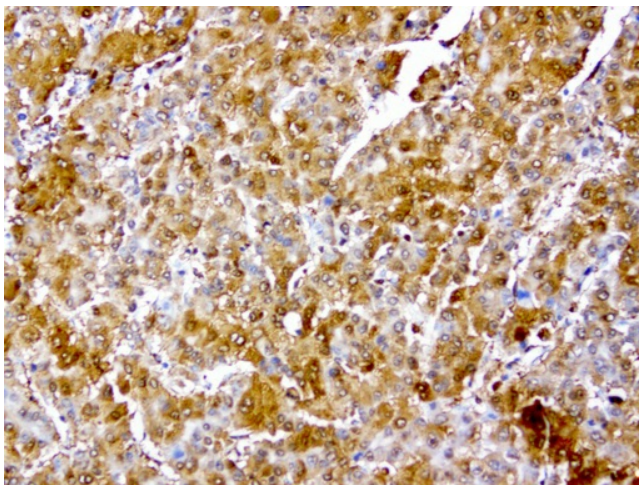


Immunohistochemical staining of paraffin-embedded human breast cancer using anti-TYMP clone UMAB97 mouse monoclonal antibody (UM800027) at 1:200 with Polink2 Broad HRP DAB detection kit; heat-induced epitope retrieval with GBI Citrate pH6.0 HIER buffer us

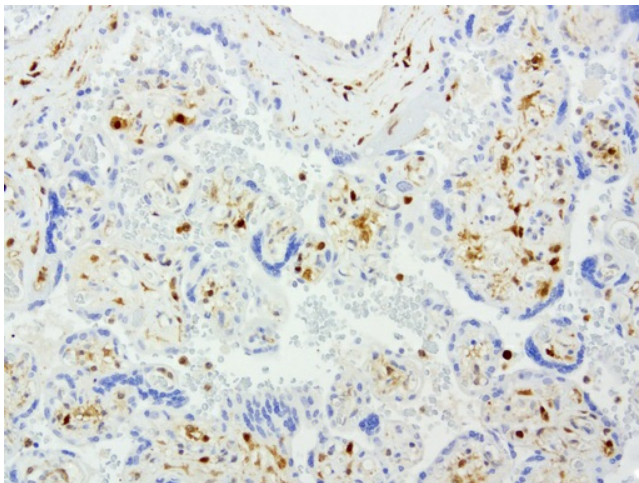




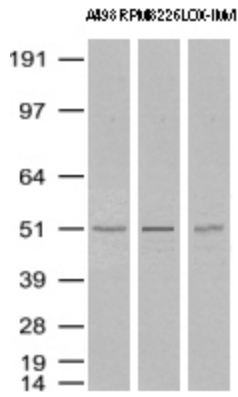
Immunohistochemical staining of paraffin-embedded human gastric cancer using anti-TYMP clone UMAB97 mouse monoclonal antibody (UM800027) at 1:200 with Polink2 Broad HRP DAB detection kit; heat-induced epitope retrieval with GBI Citrate pH6.0 HIER buffer u



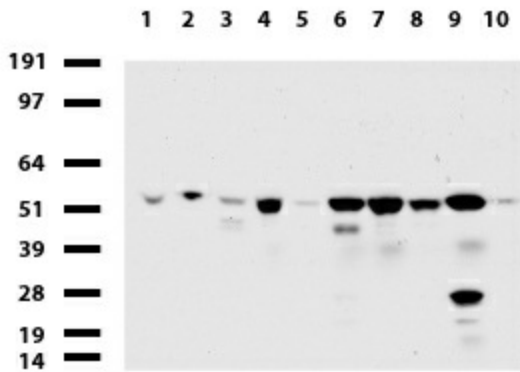
Immunohistochemical staining of paraffin-embedded human liver cancer using anti-TYMP clone UMAB97 mouse monoclonal antibody (UM800027) at 1:200 with Polink2 Broad HRP DAB detection kit; heat-induced epitope retrieval with GBI Citrate pH6.0 HIER buffer usi



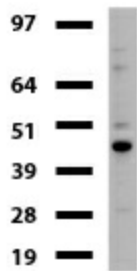
Immunohistochemical staining of paraffin-embedded human placenta using anti-TYMP clone UMAB97 mouse monoclonal antibody (UM800027) at 1:200 with Polink2 Broad HRP DAB detection kit; heat-induced epitope retrieval with GBI Citrate pH6.0 HIER buffer using p



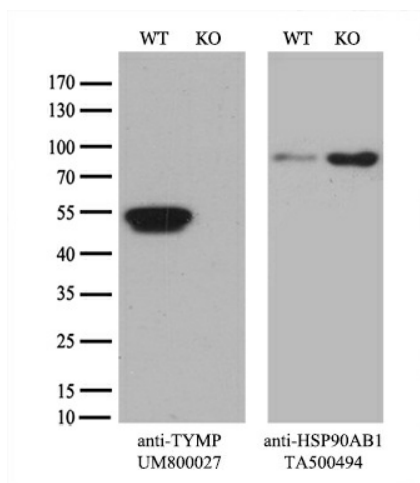
Western Blot analysis of A498, RPMI-8226 and LOX-IMVI cell lysates (35ug) by using anti-TYMP monoclonal antibody (Clone UMAB97)



Western blot of human tissue lysates (15ug) from 10 different tissues (1: Testis, 2: Omentum, 3: Uterus, 4: Breast, 5: Brain, 6: Liver, 7: Ovary, 8: Colon, 9: Spleen, 10: Thyroid). Dilution: 1:500.



Western blot of mouse tissue lysates (20ug) from Brain. Primary antibody dilution: 1:500. Secondary antibody dilution: Mouse TrueBlot® Ultra (1:1000).



Equivalent amounts of cell lysates (10 ug per lane) of wild-type HeLa cells (WT, Cat# LC810HELA) and TYMP-Knockout HeLa cells (KO, Cat# [LC831279]) were separated by SDS-PAGE and immunoblotted with anti-TYMP monoclonal antibody UM800027 (1:500). Then the blotted membrane was stripped and reprobed with anti-HSP90 antibody as a loading control.