

## Product datasheet for **UM800020**

### FOXP1 Mouse Monoclonal Antibody [Clone ID: UMAB89]

#### Product data:

Product Type:	Primary Antibodies
Clone Name:	UMAB89
Applications:	10k-ChIP, IHC, WB
Recommended Dilution:	IHC 1:100, IF 1:100
Reactivity:	Human, Mouse, Rat, Monkey
Host:	Mouse
Isotype:	IgG1
Clonality:	Monoclonal
Immunogen:	Full length human recombinant protein of human FOXP1 (NP_116071) produced in SF9 cell.
Formulation:	PBS (pH 7.3) containing 1% BSA, 50% glycerol and 0.02% sodium azide.
Concentration:	0.5~1.0 mg/ml (Lot Dependent)
Purification:	Purified from mouse ascites fluids or tissue culture supernatant by affinity chromatography (protein A/G)
Conjugation:	Unconjugated
Storage:	Store at -20°C as received.
Stability:	Stable for 12 months from date of receipt.
Predicted Protein Size:	75.1 kDa
Gene Name:	forkhead box P1
Database Link:	<a href="#">NP_116071</a> <a href="#">Entrez Gene 108655 Mouse</a> <a href="#">Entrez Gene 297480 Rat</a> <a href="#">Entrez Gene 27086 Human</a> <a href="#">Q9H334</a>
Background:	This gene belongs to subfamily P of the forkhead box (FOX) transcription factor family. Forkhead box transcription factors play important roles in the regulation of tissue- and cell type-specific gene transcription during both development and adulthood. Forkhead box P1 protein contains both DNA-binding- and protein-protein binding-domains. This gene may act as a tumor suppressor as it is lost in several tumor types and maps to a chromosomal region (3p14.1) reported to contain a tumor suppressor gene(s). Alternative splicing results in multiple transcript variants encoding different isoforms. [provided by RefSeq, Jul

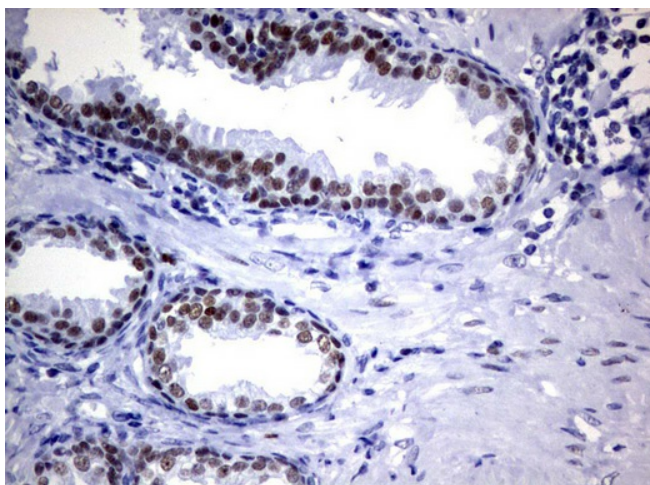


[View online »](#)

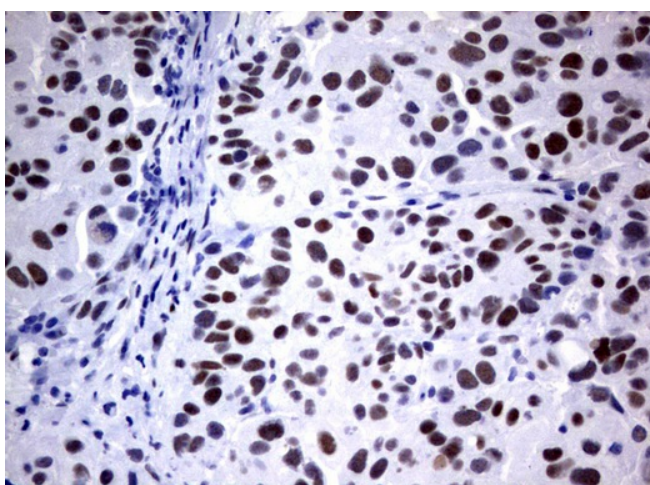
Synonyms: 12CC4; hFKH1B; HSPC215; MFH; QRF1

Protein Families: Transcription Factors

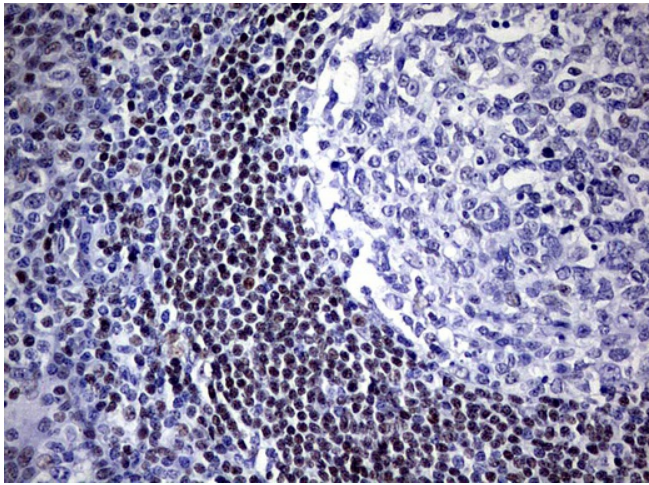
### Product images:



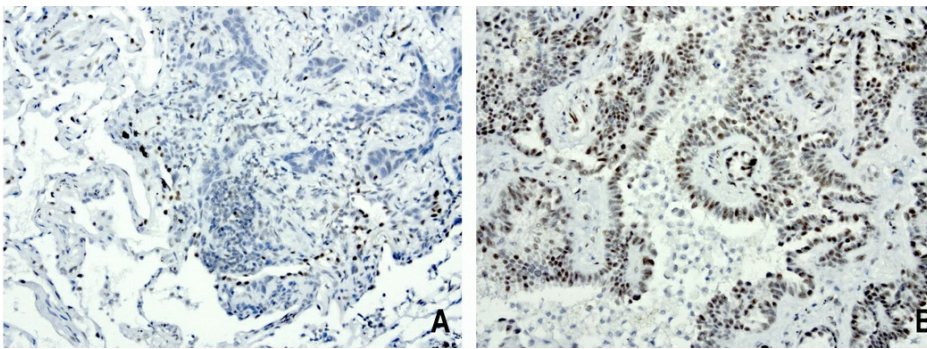
Immunohistochemical staining of paraffin-embedded Human prostate tissue using anti-FOXP1 mouse monoclonal antibody. (UM800020; heat-induced epitope retrieval by 1mM EDTA in 10mM Tris, pH8.0, 120°C for 3min)



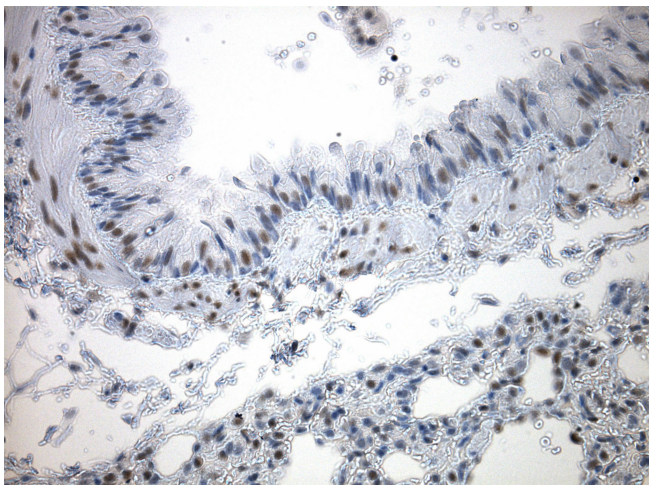
Immunohistochemical staining of paraffin-embedded Carcinoma of Human bladder tissue using anti-FOXP1 mouse monoclonal antibody. (UM800020; heat-induced epitope retrieval by 1mM EDTA in 10mM Tris, pH8.0, 120°C for 3min)



Immunohistochemical staining of paraffin-embedded Human tonsil using anti-FOXP1 mouse monoclonal antibody. (UM800020; heat-induced epitope retrieval by 1mM EDTA in 10mM Tris, pH8.0, 120°C for 3min)

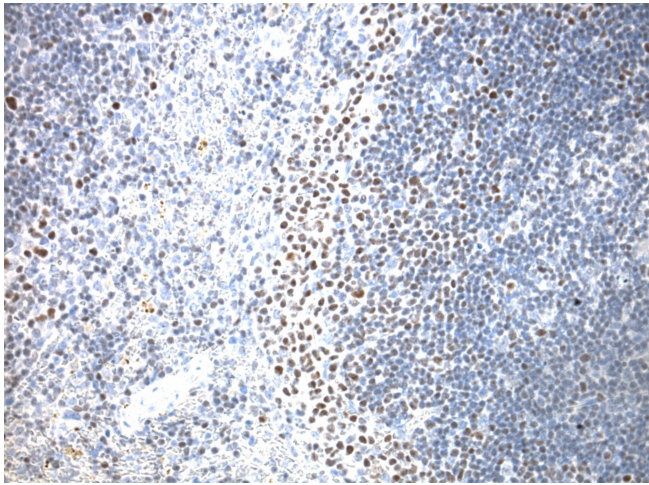


Immunohistochemical staining of paraffin-embedded human lung cancer using anti-FOXP1 clone UMAB89 mouse monoclonal antibody at 1:200 dilution of 1.0 mg/mL using Polink2 Broad HRP DAB for detection. UM800020 requires HIER with with citrate pH6.0 at 110°C for 3min using pressure chamber/cooker. The panel A shows negative tumor cells of lung carcinoma and panel B strong nuclear staining in the tumor cells.

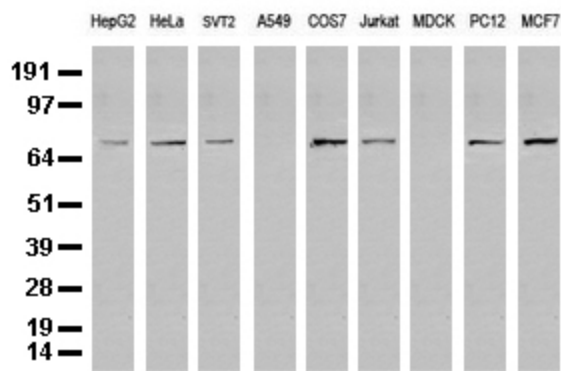


Immunohistochemical staining of paraffin-embedded mouse lung tissue using anti-FOXP1 clone UMAB89 mouse monoclonal antibody. HIER ACCEL buffer ([B22C-125]) (pH8.7) at 110C for 10 min, UM800020 (1:100). Detection was done with Klear Mouse (C/N [D52-18]) DAB Kit.

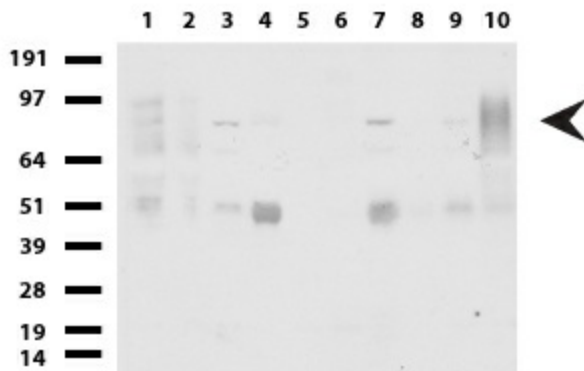




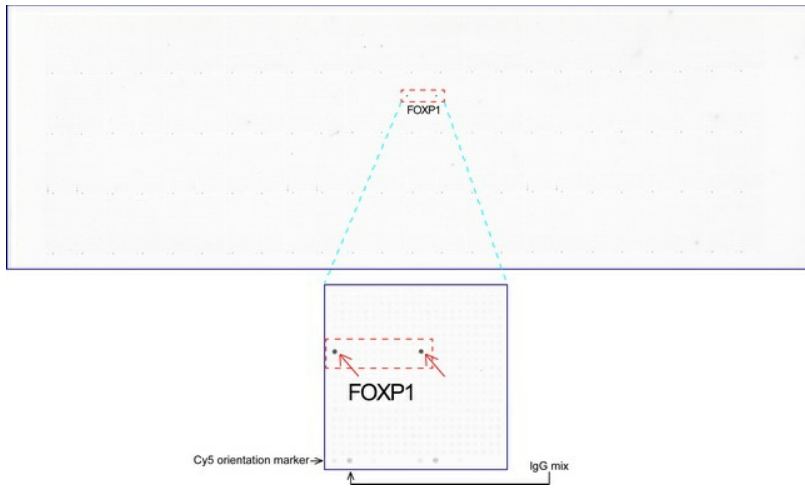
Immunohistochemical staining of paraffin-embedded mouse spleen tissue using anti-FOXP1 clone UMAB89 mouse monoclonal antibody. HIER ACCEL buffer ([B22C-125]) (pH8.7) at 110C for 10 min, UM800020 (1:100). Detection was done with Klear Mouse (C/N [D52-18]) DAB Kit.



Western blot analysis of extracts (35ug) from 9 different cell lines by using anti-FOXP1 monoclonal antibody (Clone UMAB89).



Western blot of human tissue lysates (15ug) from 10 different tissues (1: Testis, 2: Omentum, 3: Uterus, 4: Breast, 5: Brain, 6: Liver, 7: Ovary, 8: Thyroid, 9: Colon, 10: Spleen ). Dilution: 1:500.



OriGene overexpression protein microarray chip was immunostained with UltraMAB anti-FOXP1 mouse monoclonal antibody (UM800020). The positive reactive proteins are highlighted with two red arrows in the enlarged subarray. All the positive controls spotted in this subarray are also labeled for clarification.