

## Product datasheet for **UM800019**

### HE4 (WFDC2) Mouse Monoclonal Antibody [Clone ID: UMAB88]

#### Product data:

Product Type:	Primary Antibodies
Clone Name:	UMAB88
Applications:	10k-ChIP, IHC, WB
Recommended Dilution:	IHC 1:100
Reactivity:	Human
Host:	Mouse
Isotype:	IgG1
Clonality:	Monoclonal
Immunogen:	Human recombinant protein fragment corresponding to amino acids 31-124 of human WFDC2 (NP_006094) produced in E.coli.
Formulation:	PBS (pH 7.3) containing 1% BSA, 50% glycerol and 0.02% sodium azide.
Concentration:	0.5~1.0 mg/ml (Lot Dependent)
Purification:	Purified from mouse ascites fluids or tissue culture supernatant by affinity chromatography (protein A/G)
Conjugation:	Unconjugated
Storage:	Store at -20°C as received.
Stability:	Stable for 12 months from date of receipt.
Predicted Protein Size:	10 kDa
Gene Name:	WAP four-disulfide core domain 2
Database Link:	<a href="#">NP_006094</a> <a href="#">Entrez Gene 10406 Human</a> <a href="#">Q14508</a>
Background:	This gene encodes a protein that is a member of the WFDC domain family. The WFDC domain, or WAP Signature motif, contains eight cysteines forming four disulfide bonds at the core of the protein, and functions as a protease inhibitor in many family members. This gene is expressed in pulmonary epithelial cells, and was also found to be expressed in some ovarian cancers. The encoded protein is a small secretory protein, which may be involved in sperm maturation. [provided by RefSeq, Jul 2008]

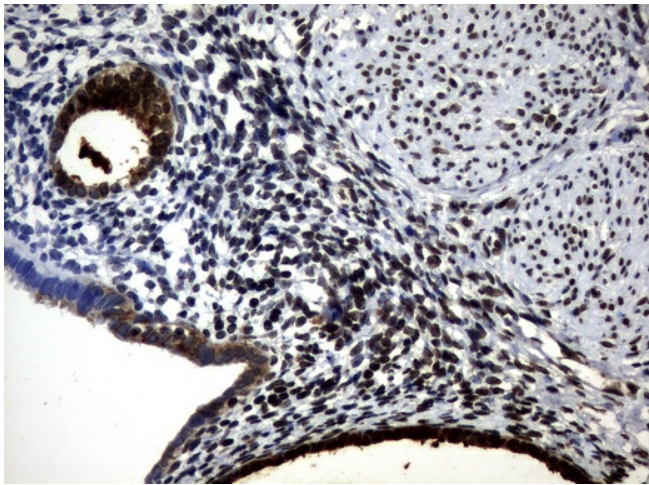


[View online »](#)

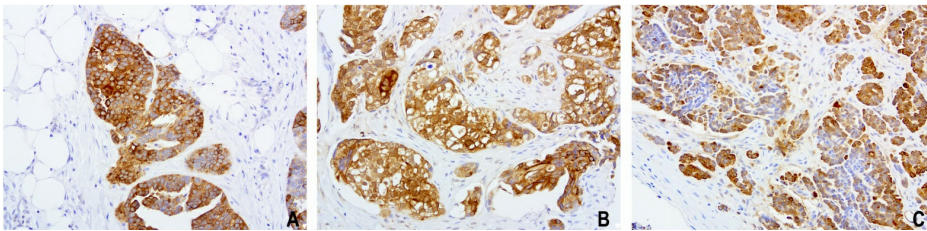
**Synonyms:** dj461P17.6; EDDM4; HE4; WAP5

**Protein Families:** Secreted Protein, Transmembrane

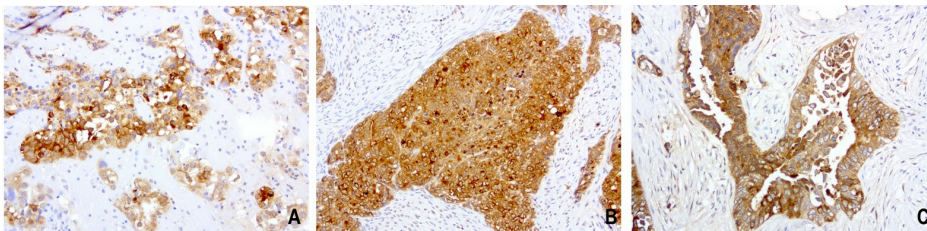
**Product images:**



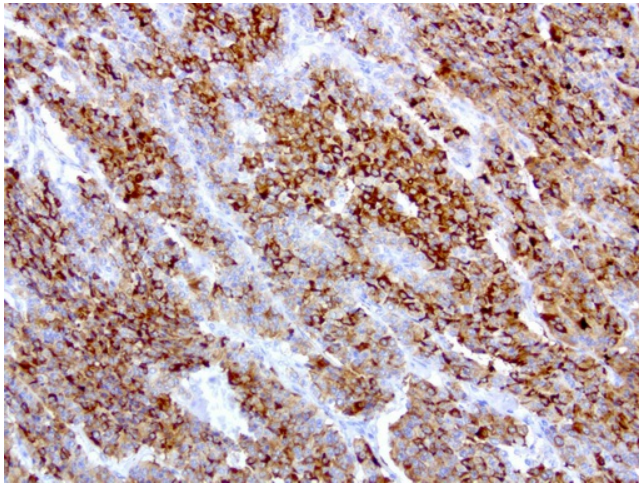
Immunohistochemical staining of paraffin-embedded Human endometrium tissue using anti-WFDC2 mouse monoclonal antibody. (UM800019; heat-induced epitope retrieval by 10mM citric buffer, pH6.0, 120°C for 3min)



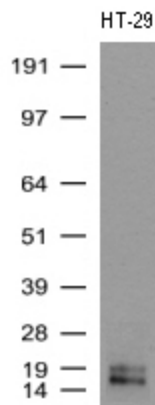
Immunohistochemical staining of paraffin-embedded 3 human ovarian cancer using anti-HE4 clone UMAB88 mouse monoclonal antibody at 1:200 dilution of 1.0 mg/mL using Polink2 Broad HRP DAB for detection. [UM800018] requires HIER with with citrate pH6.0 at 110°C for 3min using pressure chamber/cooker. The tumor cells show membrane and cytoplasmic staining.



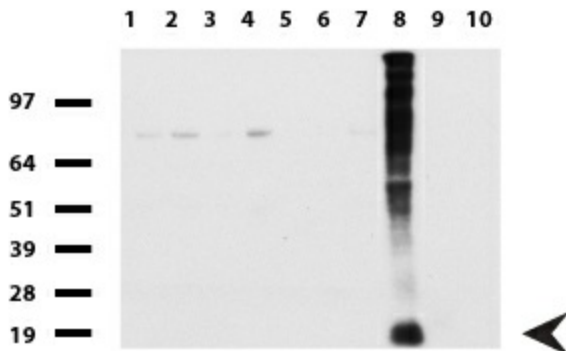
Immunohistochemical staining of paraffin-embedded 3 human endometrial cancer using anti-HE4 clone UMAB88 mouse monoclonal antibody at 1:200 dilution of 1.0 mg/mL using Polink2 Broad HRP DAB for detection. [UM800018] requires HIER with with citrate pH6.0 at 110°C for 3min using pressure chamber/cooker. The tumor cells show membrane and cytoplasmic staining.



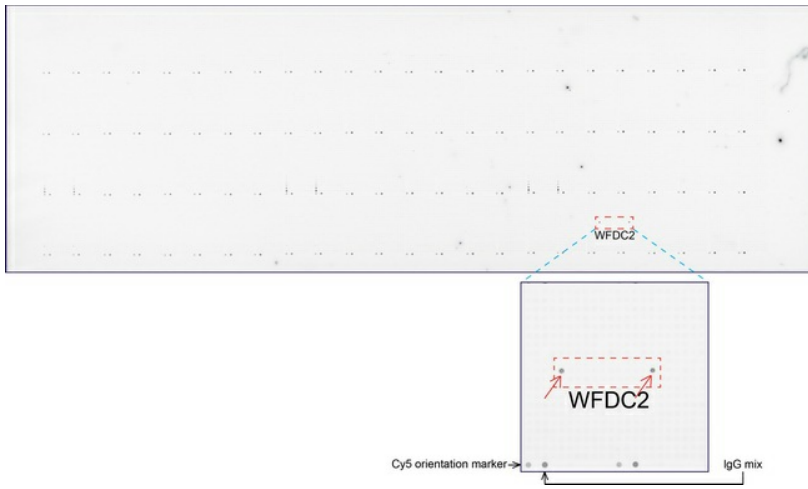
Immunohistochemical staining of paraffin-embedded human lung cancer using anti-HE4 clone UMAB88 mouse monoclonal antibody at 1:200 dilution of 1.0 mg/mL using Polink2 Broad HRP DAB for detection. [UM800018] requires HIER with with citrate pH6.0 at 110°C for 3min using pressure chamber/cooker. The tumor cells show membrane and cytoplasmic staining.



Western Blot analysis of HT-29 cell lysate (35ug) by using anti-WFDC2 monoclonal antibody (Clone UMAB88)



Western blot of human tissue lysates (15ug) from 10 different tissues (1: Testis, 2: Omentum, 3: Uterus, 4: Breast, 5: Brain, 6: Liver, 7: Ovary, 8: Thyroid, 9: Colon, 10: Spleen ). Dilution: 1:1000.



OriGene overexpression protein microarray chip was immunostained with UltraMAB anti-WFDC2 mouse monoclonal antibody (UM800019). The positive reactive proteins are highlighted with two red arrows in the enlarged subarray. All the positive controls spotted in this subarray are also labeled for clarification.