

## Product datasheet for **UM800009**

### CD20 (MS4A1) Mouse Monoclonal Antibody [Clone ID: UMAB58]

#### Product data:

Product Type:	Primary Antibodies
Clone Name:	UMAB58
Applications:	10k-ChIP, IF, IHC, WB
Recommended Dilution:	IHC 1:100
Reactivity:	Human
Host:	Mouse
Isotype:	IgG1
Clonality:	Monoclonal
Immunogen:	Full length human recombinant protein of human MS4A1 (NP_068769) produced in HEK293T cell.
Formulation:	PBS (pH 7.3) containing 1% BSA, 50% glycerol and 0.02% sodium azide.
Concentration:	0.5~1.0 mg/ml (Lot Dependent)
Purification:	Purified from mouse ascites fluids or tissue culture supernatant by affinity chromatography (protein A/G)
Conjugation:	Unconjugated
Storage:	Store at -20°C as received.
Stability:	Stable for 12 months from date of receipt.
Predicted Protein Size:	32.9 kDa
Gene Name:	membrane spanning 4-domains A1
Database Link:	<a href="#">NP_068769</a> <a href="#">Entrez Gene 931 Human</a> <a href="#">P11836</a>



[View online »](#)

**Background:**

This gene encodes a member of the membrane-spanning 4A gene family. Members of this nascent protein family are characterized by common structural features and similar intron/exon splice boundaries and display unique expression patterns among hematopoietic cells and nonlymphoid tissues. This gene encodes a B-lymphocyte surface molecule which plays a role in the development and differentiation of B-cells into plasma cells. This family member is localized to 11q12, among a cluster of family members. Alternative splicing of this gene results in two transcript variants which encode the same protein. [provided by RefSeq, Jul

**Synonyms:**

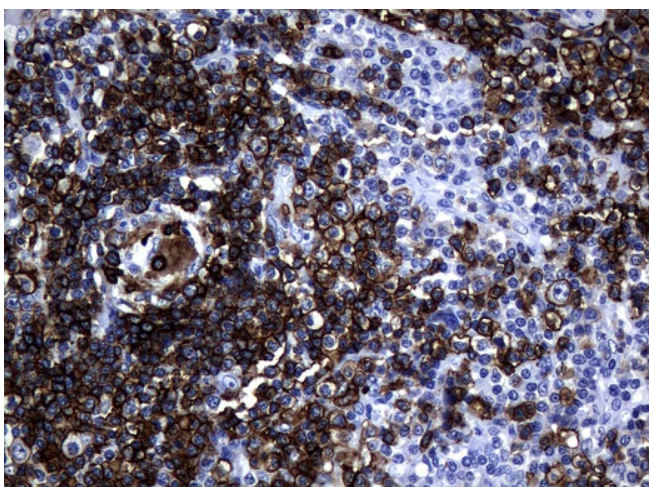
B1; Bp35; CD20; CVID5; FMC7; LEU-16; MS4A2; S7

**Protein Families:**

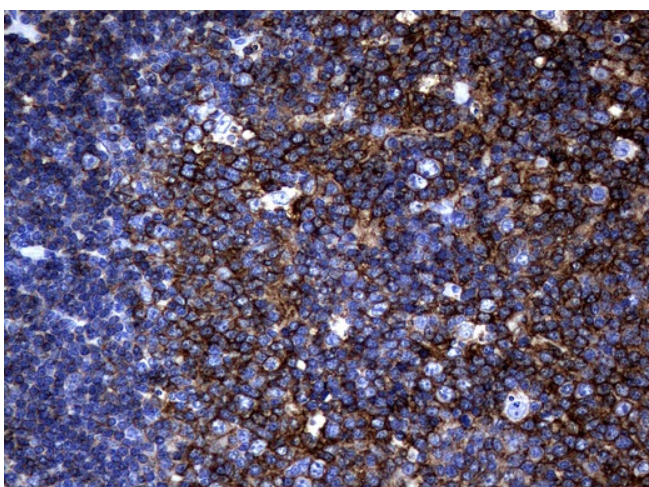
Druggable Genome, Transmembrane

**Protein Pathways:**

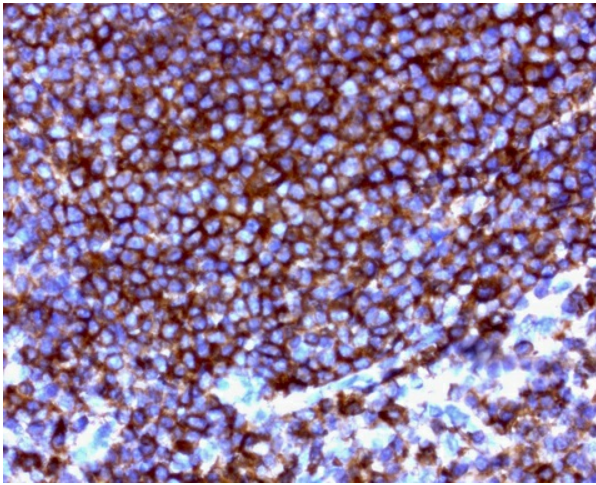
Hematopoietic cell lineage

**Product images:**

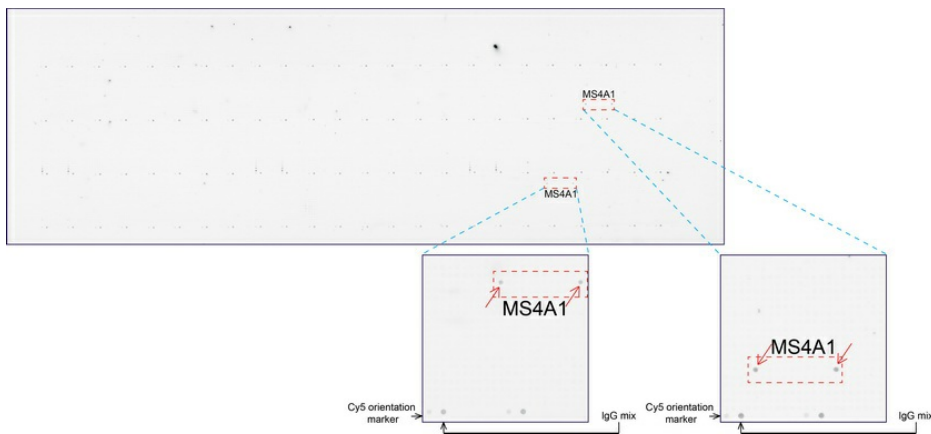
Immunohistochemical staining of paraffin-embedded Human lymphoma tissue using anti-MS4A1 mouse monoclonal antibody. (UM800009; heat-induced epitope retrieval by 10mM citric buffer, pH6.0, 120°C for 3min)



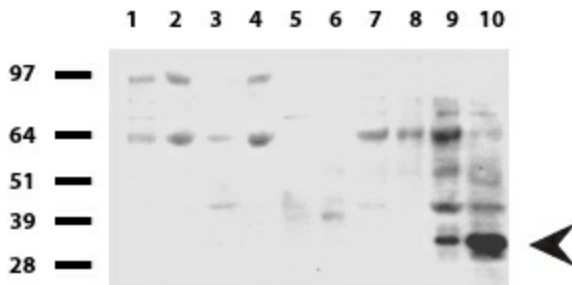
Immunohistochemical staining of paraffin-embedded Human tonsil using anti-MS4A1 mouse monoclonal antibody. (UM800009; heat-induced epitope retrieval by 10mM citric buffer, pH6.0, 120°C for 3min)



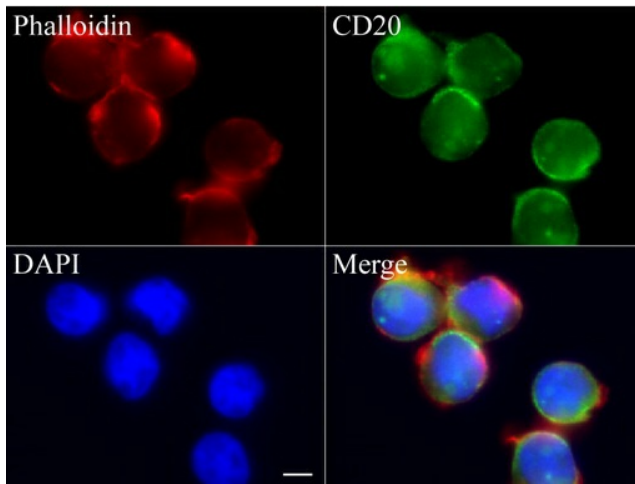
Immunohistochemical staining of paraffin-embedded human spleen using anti-CD20 clone UMAB58 mouse monoclonal antibody at 1:200 dilution of 1mg/mL and detection with Polink2 Broad HRP DAB. UM800009 requires heat-induced epitope retrieval with Citrate pH6.0 for 3minutes at 110C in pressure chamber. The image shows the cells in the white pulp have strong cytoplasmic and membrane staining.



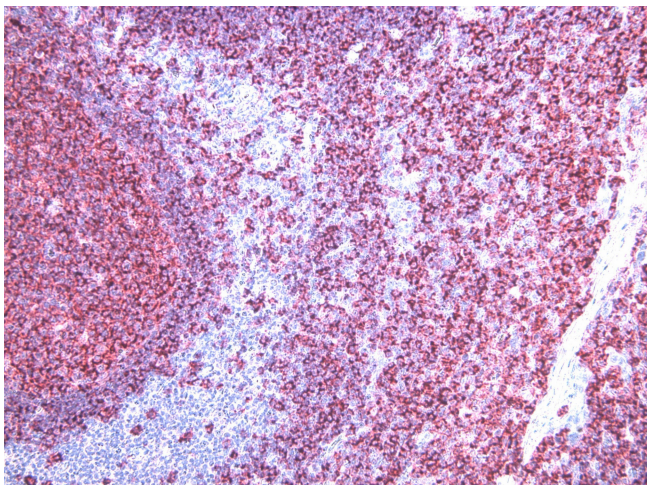
OriGene overexpression protein microarray chip was immunostained with UltraMAB anti-MS4A1 mouse monoclonal antibody (UM800009). The positive reactive proteins are highlighted with two red arrows in the enlarged subarray. All the positive controls spotted in this subarray are also labeled for clarification.



Western blot of human tissue lysates (15ug) from 10 different tissues (1: Testis, 2: Omentum, 3: Uterus, 4: Breast, 5: Brain, 6: Liver, 7: Ovary, 8: Thyroid, 9: Colon, 10: Spleen ). Dilution: 1:250.



Immunofluorescent staining of Jurkat cells using anti-CD20 mouse monoclonal antibody (UM800009, green, 1:100). Actin filaments were labeled with Alexa Fluor® 594 Phalloidin (red), and nuclear with DAPI (blue). Scale bar, 4µm.



Human tonsil screened with OriGene's Ms anti MS4A1 (CD20) (UM800009 @ 1:800). HIER buffer TEE ([B21-100]) was used in pressure cooker. Secondary Polink 1 AP Mouse with out chromogen ([D18-110]) was use according to protocol data sheet. Cytoplasmic and membrane stain was visualized with GBI permanent red chromogen ([C13-120]).