

## Product datasheet for **UM800003**

### CD20 (MS4A1) Mouse Monoclonal Antibody [Clone ID: UMAB39]

#### Product data:

Product Type:	Primary Antibodies
Clone Name:	UMAB39
Applications:	IHC
Recommended Dilution:	WB 1:2000, IHC 1:500
Reactivity:	Human
Host:	Mouse
Isotype:	IgG1
Clonality:	Monoclonal
Immunogen:	Full length human recombinant protein of human MS4A1 (NP_068769) produced in HEK293T cell.
Formulation:	PBS (pH 7.3) containing 1% BSA, 50% glycerol and 0.02% sodium azide.
Concentration:	0.5~1.0 mg/ml (Lot Dependent)
Purification:	Purified from mouse ascites fluids or tissue culture supernatant by affinity chromatography (protein A/G)
Conjugation:	Unconjugated
Storage:	Store at -20°C as received.
Stability:	Stable for 12 months from date of receipt.
Predicted Protein Size:	32.9 kDa
Gene Name:	membrane spanning 4-domains A1
Database Link:	<a href="#">NP_068769</a> <a href="#">Entrez Gene 931 Human</a> <a href="#">P11836</a>

[View online »](#)

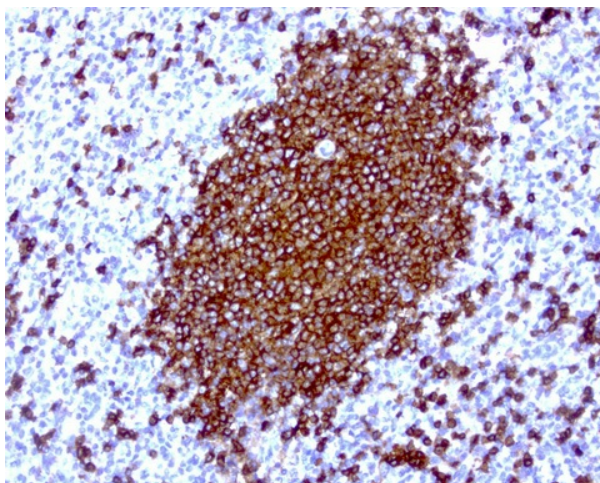
**Background:** This gene encodes a member of the membrane-spanning 4A gene family. Members of this nascent protein family are characterized by common structural features and similar intron/exon splice boundaries and display unique expression patterns among hematopoietic cells and nonlymphoid tissues. This gene encodes a B-lymphocyte surface molecule which plays a role in the development and differentiation of B-cells into plasma cells. This family member is localized to 11q12, among a cluster of family members. Alternative splicing of this gene results in two transcript variants which encode the same protein. [provided by RefSeq]

**Synonyms:** B1; Bp35; CD20; CVID5; FMC7; LEU-16; MS4A2; S7

**Protein Families:** Druggable Genome, Transmembrane

**Protein Pathways:** Hematopoietic cell lineage

### Product images:



Immunohistochemical staining of paraffin-embedded human spleen using anti-CD20 clone UMAB39 mouse monoclonal antibody at 1:200 dilution of 1mg/mL and detection with Polink2 Broad HRP DAB. UM800003 requires heat-induced epitope retrieval with Citrate pH6.0 for 3 minutes at 110°C in pressure chamber. The image shows the cells in the white pulp have strong cytoplasmic and membrane staining.