

Product datasheet for **UM800002**

CD20 (MS4A1) Mouse Monoclonal Antibody [Clone ID: UMAB38]

Product data:

Product Type:	Primary Antibodies
Clone Name:	UMAB38
Applications:	IHC, WB
Recommended Dilution:	WB 1:500, IHC 1:100
Reactivity:	Human
Host:	Mouse
Isotype:	IgG1
Clonality:	Monoclonal
Immunogen:	Full length human recombinant protein of human MS4A1 (NP_068769) produced in HEK293T cell.
Formulation:	PBS (pH 7.3) containing 1% BSA, 50% glycerol and 0.02% sodium azide.
Concentration:	0.5~1.0 mg/ml (Lot Dependent)
Purification:	Purified from mouse ascites fluids or tissue culture supernatant by affinity chromatography (protein A/G)
Conjugation:	Unconjugated
Storage:	Store at -20°C as received.
Stability:	Stable for 12 months from date of receipt.
Predicted Protein Size:	32.9 kDa
Gene Name:	Homo sapiens membrane spanning 4-domains A1 (MS4A1), transcript variant 3, mRNA.
Database Link:	NP_068769 Entrez Gene 931 Human P11836

[View online »](#)

Background:

This gene encodes a member of the membrane-spanning 4A gene family. Members of this nascent protein family are characterized by common structural features and similar intron/exon splice boundaries and display unique expression patterns among hematopoietic cells and nonlymphoid tissues. This gene encodes a B-lymphocyte surface molecule which plays a role in the development and differentiation of B-cells into plasma cells. This family member is localized to 11q12, among a cluster of family members. Alternative splicing of this gene results in two transcript variants which encode the same protein. [provided by RefSeq]

Synonyms:

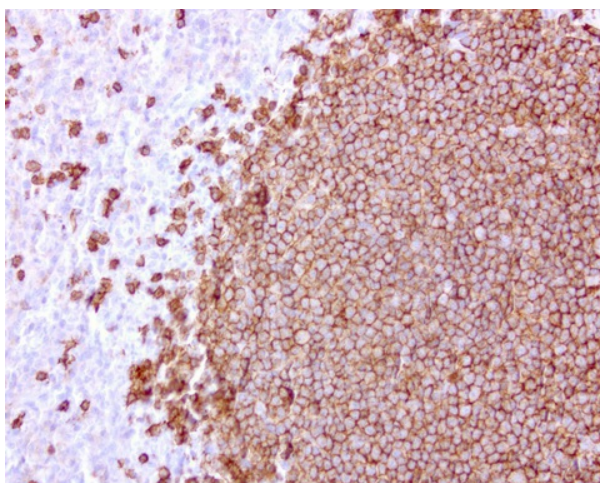
B1; Bp35; CD20; CVID5; FMC7; LEU-16; MS4A2; S7

Protein Families:

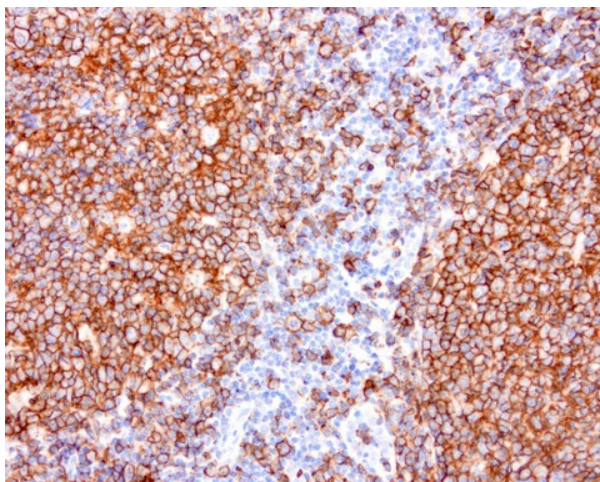
Druggable Genome, Transmembrane

Protein Pathways:

Hematopoietic cell lineage

Product images:


Immunohistochemical staining of paraffin-embedded human spleen using anti-CD20 mouse monoclonal antibody at 1:200 dilution of 1.0 mg/mL using Polink2 Broad HRP DAB for detection. UM800002 requires HIER with with citrate pH6.0 at 110°C for 3min using pressure chamber/cooker. The spleen shows strong membrane and cytoplasmic staining in red and white pulp cells.



Immunohistochemical staining of paraffin-embedded human tonsil using anti-CD20 mouse monoclonal antibody at 1:200 dilution of 1.0 mg/mL using Polink2 Broad HRP DAB for detection. UM800002 requires HIER with with citrate pH6.0 at 110°C for 3min using pressure chamber/cooker. The tonsil shows strong membrane and cytoplasmic staining in the germinal center of the tonsil and some poitive cells in the non-germinal center.



Western Blot analysis of 10 different human tissue lysates (10ug) by using anti-CD20 monoclonal antibody (clone UMAB38, 1:500)