

Product datasheet for **UM570065**

ERG Mouse Monoclonal Antibody [Clone ID: UMAB77]

Product data:

Product Type:	Primary Antibodies
Clone Name:	UMAB77
Applications:	10k-ChIP, IF, IHC, WB
Recommended Dilution:	IHC 1:100
Reactivity:	Human, Mouse, Rat
Host:	Mouse
Isotype:	IgG1
Clonality:	Monoclonal
Immunogen:	Full length human recombinant protein of human ERG(NP_891548) produced in HEK293T cell.
Formulation:	PBS (pH 7.3) containing 1% BSA, 50% glycerol and 0.02% sodium azide.
Concentration:	0.5~1.0 mg/ml (Lot Dependent)
Purification:	Purified from mouse ascites fluids or tissue culture supernatant by affinity chromatography (protein A/G)
Conjugation:	Unconjugated
Storage:	Store at -20°C as received.
Stability:	Stable for 12 months from date of receipt.
Predicted Protein Size:	53.7 kDa
Gene Name:	ETS transcription factor ERG
Database Link:	NP_891548 Entrez Gene 13876 Mouse Entrez Gene 170909 Rat Entrez Gene 2078 Human P11308



[View online »](#)

Background:

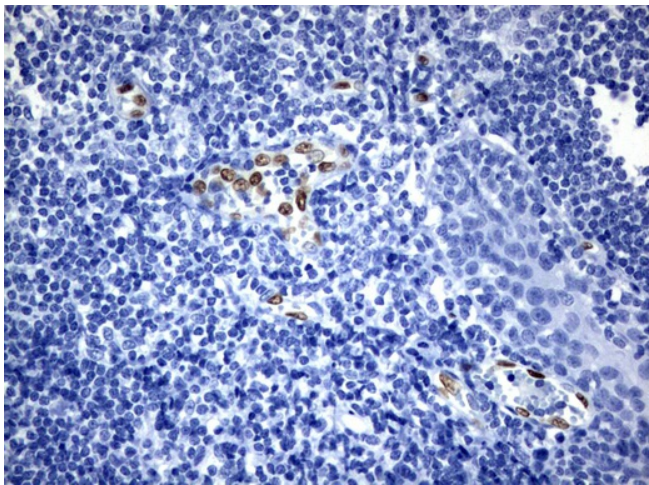
This gene encodes a member of the erythroblast transformation-specific (ETS) family of transcription factors. All members of this family are key regulators of embryonic development, cell proliferation, differentiation, angiogenesis, inflammation, and apoptosis. The protein encoded by this gene is mainly expressed in the nucleus. It contains an ETS DNA-binding domain and a PNT (pointed) domain which is implicated in the self-association of chimeric oncoproteins. This protein is required for platelet adhesion to the subendothelium, inducing vascular cell remodeling. It also regulates hematopoiesis, and the differentiation and maturation of megakaryocytic cells. This gene is involved in chromosomal translocations, resulting in different fusion gene products, such as TMPSSR2-ERG and NDRG1-ERG in prostate cancer, EWS-ERG in Ewing's sarcoma and FUS-ERG in acute myeloid leukemia. Multiple alternatively spliced transcript variants encoding different isoforms have been identified. [provided by RefSeq, Jan

Synonyms:

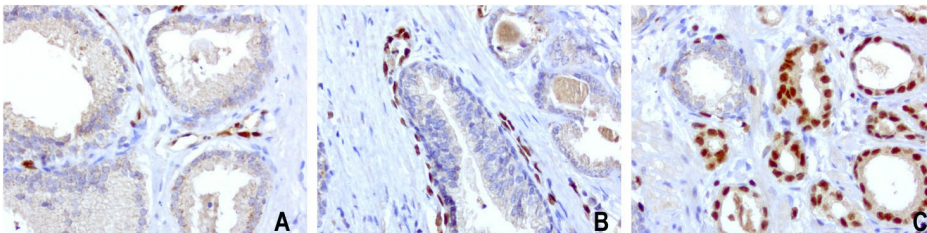
erg-3; p55

Protein Families:

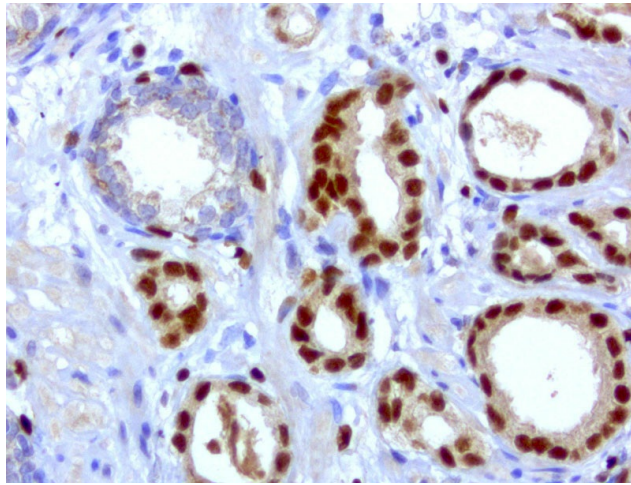
Druggable Genome, Transcription Factors

Product images:

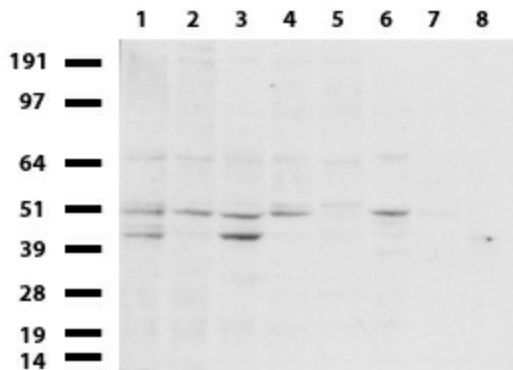
Immunohistochemical staining of paraffin-embedded Human tonsil using anti-ERG mouse monoclonal antibody. ([UM500065]; heat-induced epitope retrieval by 10mM citric buffer, pH6.0, 120°C for 3min)



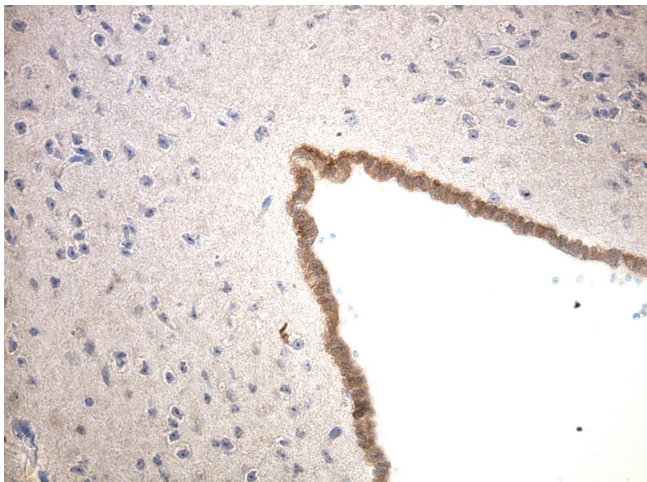
IHC staining of paraffin-embedded carcinoma of human prostate using anti-ERG clone UMAB77 at 1:200 dilution of 0.8mg/mL and detection with Polink2 Broad HRP DAB. [UM500056] requires heat-induced epitope retrieval with EDTA (pH8.7) at 95-100C 20 min. The composite image shows 3 prostate tumors with no staining in tumor cells of figure A and B although strong nuclear staining is present in the endothelial cells. Figure C shows strong nuclear with weak cytoplasmic staining in prostate tumor cells.



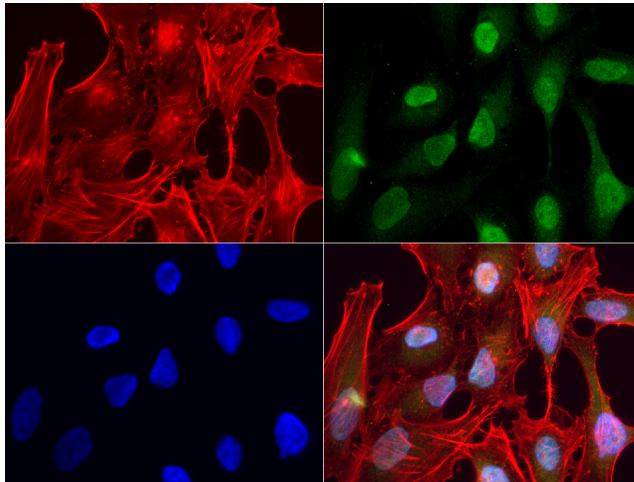
Immunohistochemical staining of paraffin-embedded human prostate cancer using anti-ERG clone UMAB77 at 1:200 dilution of 0.8mg/mL and detection with Polink2 Broad HRP DAB. [UM500065] requires heat-induced epitope retrieval with ACCEL (pH8.7) biocare pressure cooker. The image shows prostate tumors staining in tumor cells.



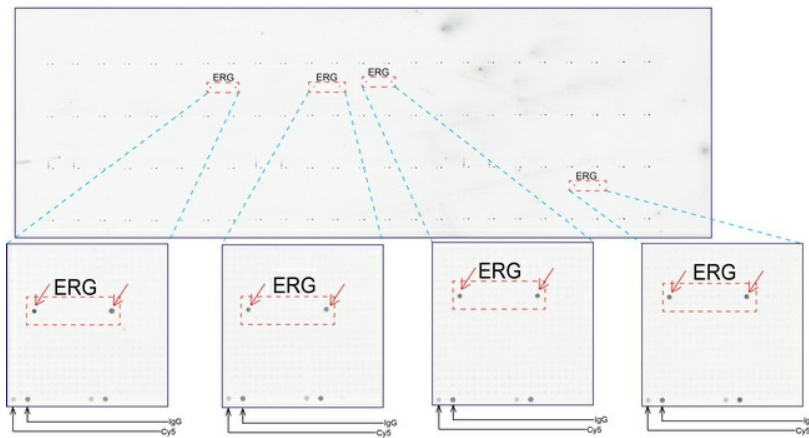
Western blot of cell lysates (35ug) from 8 different cell lines (1: HeLa, 2: SV-T2, 3: A549, 4: COS7, 5: Jurkat, 6: MDCK, 7: PC-12, 8: MCF7).



Immunohistochemical staining of paraffin-embedded mouse brain tissue using mouse anti-ERG clone UMAB77 mouse monoclonal antibody. HIER TEE buffer ([B21-100]) (pH9) at 110C for 10 min, [UM500065] (1:100). Detection was done with Klear Mouse (C/N [D52-18]) DAB Chromogen Kit.



Immunofluorescent staining of HeLa cells using anti-ERG mouse monoclonal antibody ([UM500065], green, 1:50). Actin filaments were labeled with Alexa Fluor® 594 Phalloidin (red), and nuclear with DAPI (blue).



OriGene overexpression protein microarray chip was immunostained with UltraMAB anti-ERG mouse monoclonal antibody ([UM500065]). The positive reactive proteins are highlighted with two red arrows in the enlarged subarray. All the positive controls spotted in this subarray are also labeled for clarification.