

## Product datasheet for **UM570063**

### **PFDN3 (VBP1) Mouse Monoclonal Antibody [Clone ID: UMAB75]**

#### **Product data:**

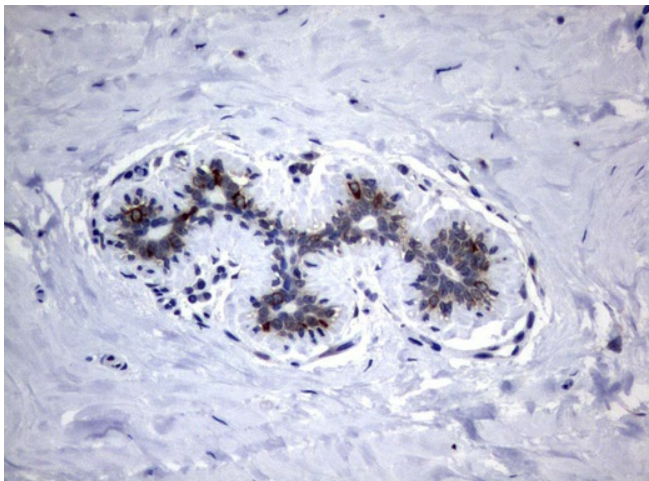
<b>Product Type:</b>	Primary Antibodies
<b>Clone Name:</b>	UMAB75
<b>Applications:</b>	10k-ChIP, IF, IHC, WB
<b>Recommended Dilution:</b>	IHC 1:100
<b>Reactivity:</b>	Human, Mouse
<b>Host:</b>	Mouse
<b>Isotype:</b>	IgG1
<b>Clonality:</b>	Monoclonal
<b>Immunogen:</b>	Full length human recombinant protein of human VBP1(NP_003363) produced in HEK293T cell.
<b>Formulation:</b>	PBS (pH 7.3) containing 1% BSA, 50% glycerol and 0.02% sodium azide.
<b>Concentration:</b>	0.5~1.0 mg/ml (Lot Dependent)
<b>Purification:</b>	Purified from mouse ascites fluids or tissue culture supernatant by affinity chromatography (protein A/G)
<b>Conjugation:</b>	Unconjugated
<b>Storage:</b>	Store at -20°C as received.
<b>Stability:</b>	Stable for 12 months from date of receipt.
<b>Predicted Protein Size:</b>	22.4 kDa
<b>Gene Name:</b>	VHL binding protein 1
<b>Database Link:</b>	<a href="#">NP_003363</a> <a href="#">Entrez Gene 22327 Mouse</a> <a href="#">Entrez Gene 7411 Human</a> <a href="#">P61758</a>
<b>Background:</b>	The protein encoded by this gene interacts with the Von Hippel-Lindau protein to form an intracellular complex. Because it functions as a chaperone protein, it is suspected that it may play a role in the transport of the Von Hippel-Lindau protein from the perinuclear granules to the nucleus or cytoplasm. [provided by RefSeq, Jul 2008]
<b>Synonyms:</b>	HIBBJ46; PFD3; PFDN3; VBP-1



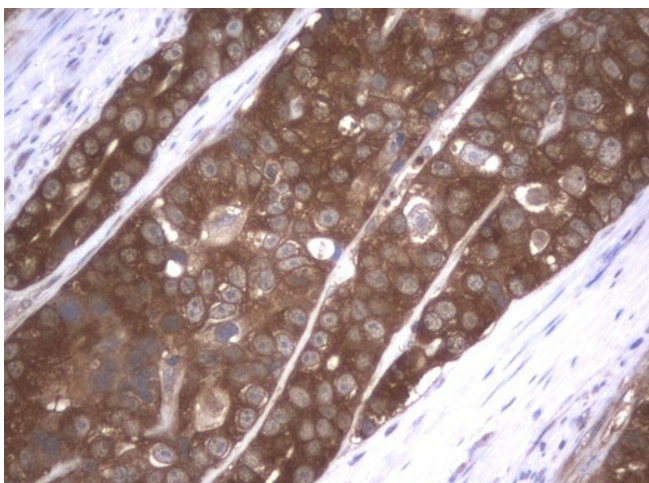
[View online »](#)

Protein Families: Druggable Genome

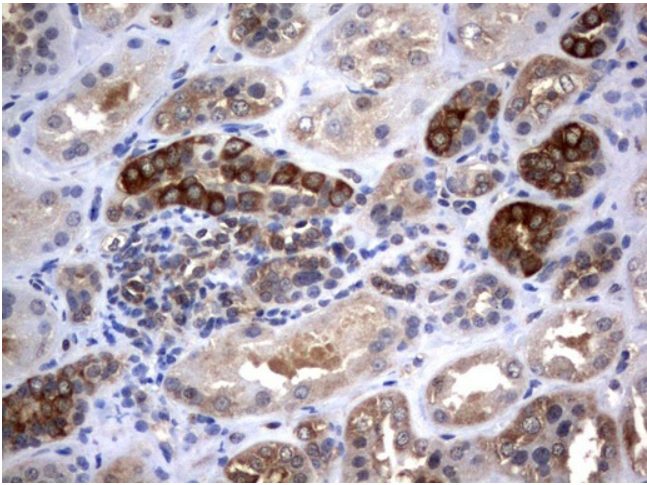
### Product images:



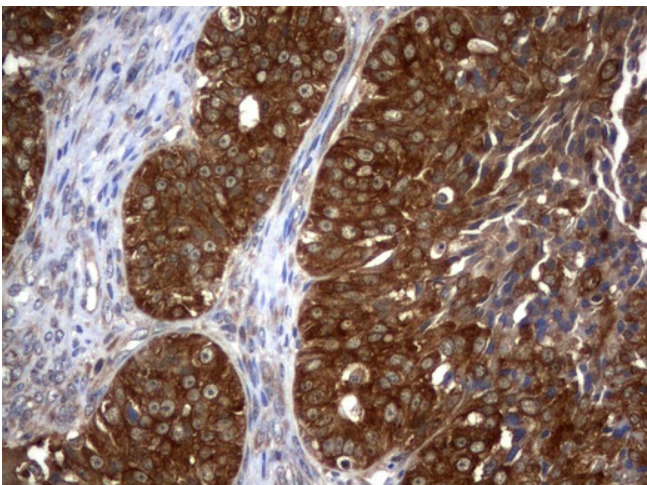
Immunohistochemical staining of paraffin-embedded Human breast tissue using anti-VBP1 mouse monoclonal antibody. ([UM500063]; heat-induced epitope retrieval by 10mM citric buffer, pH6.0, 120°C for 3min)



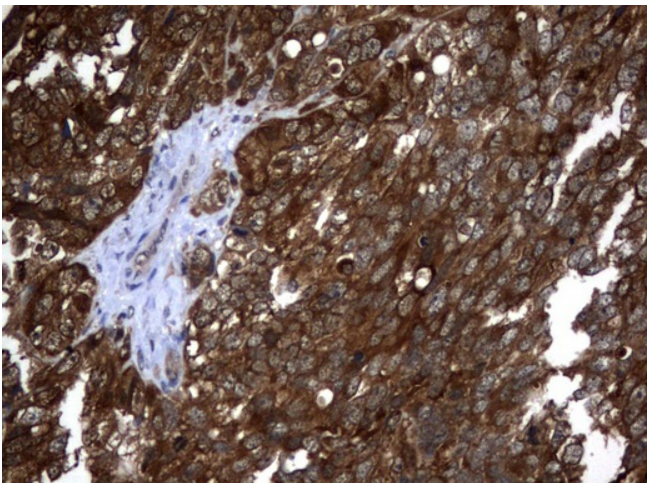
Immunohistochemical staining of paraffin-embedded Adenocarcinoma of Human colon tissue using anti-VBP1 mouse monoclonal antibody. ([UM500063]; heat-induced epitope retrieval by 10mM citric buffer, pH6.0, 120°C for 3min)



Immunohistochemical staining of paraffin-embedded Human Kidney tissue using anti-VBP1 mouse monoclonal antibody. ([UM500063]; heat-induced epitope retrieval by 10mM citric buffer, pH6.0, 120°C for 3min)

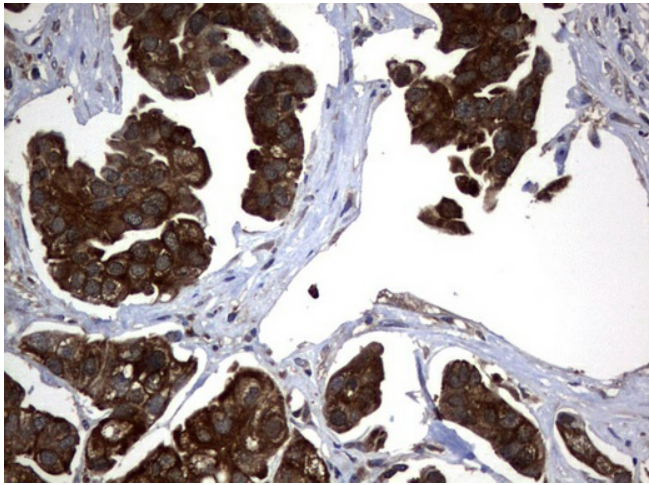


Immunohistochemical staining of paraffin-embedded Adenocarcinoma of Human ovary tissue using anti-VBP1 mouse monoclonal antibody. ([UM500063]; heat-induced epitope retrieval by 10mM citric buffer, pH6.0, 120°C for 3min)

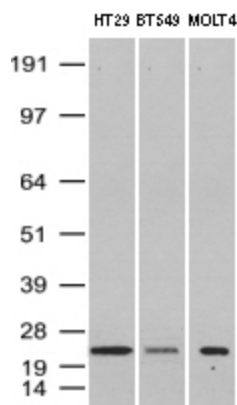


Immunohistochemical staining of paraffin-embedded Adenocarcinoma of Human endometrium tissue using anti-VBP1 mouse monoclonal antibody. ([UM500063]; heat-induced epitope retrieval by 10mM citric buffer, pH6.0, 120°C for 3min)

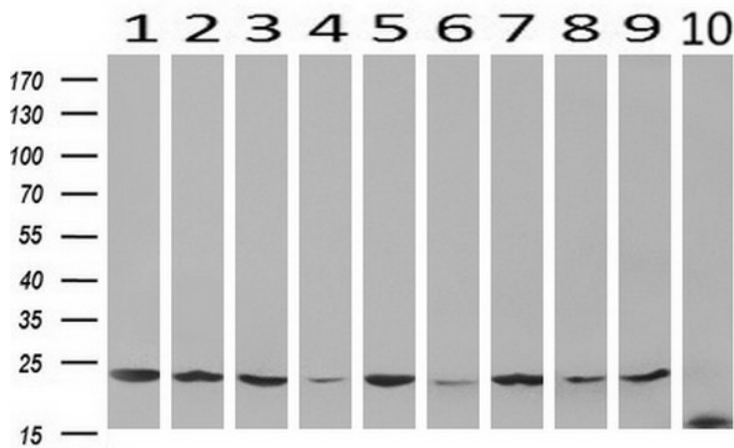




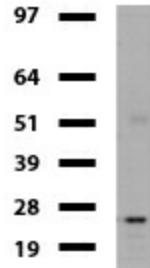
Immunohistochemical staining of paraffin-embedded Carcinoma of Human bladder tissue using anti-VBP1 mouse monoclonal antibody. ([UM500063]; heat-induced epitope retrieval by 10mM citric buffer, pH6.0, 120°C for 3min)



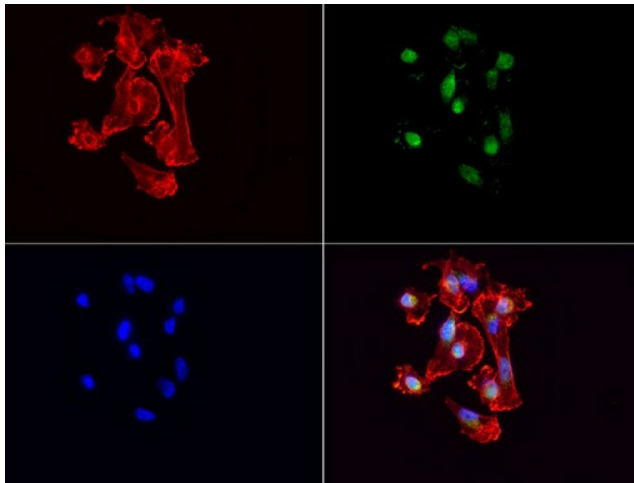
Western Blot analysis of HT-29, BT-549 and MOLT-4 cell lysates (35ug) by using anti-VBP1 monoclonal antibody (Clone UMAB75)



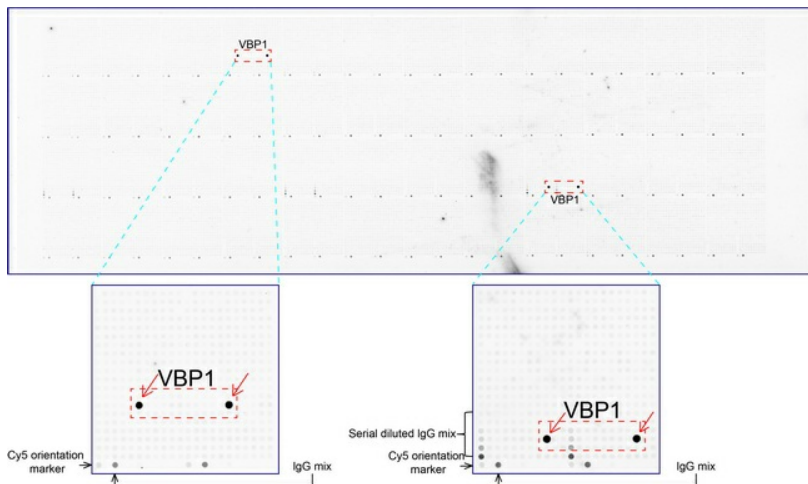
Western blot analysis of extracts (10ug) from 10 Human tissue by using anti-VBP1 monoclonal antibody at 1:200 (1: Testis; 2: Omentum; 3: Uterus; 4: Breast; 5: Brain; 6: Liver; 7: Ovary; 8: Thyroid gland; 9: colon; 10: spleen).



Western blot of mouse tissue lysates (20ug) from Ovary. Primary antibody dilution: 1:500. Secondary antibody dilution: Mouse TrueBlot® Ultra (1:1000).



Immunofluorescent staining of MDA-MB-231 cells using anti-VBP1 mouse monoclonal antibody ([UM500063], green, 1:100). Actin filaments were labeled with TRITC-phalloidin (red), and nuclear with DAPI (blue).



OriGene overexpression protein microarray chip was immunostained with UltraMAB anti-VBP1 mouse monoclonal antibody ([UM500063]). The positive reactive proteins are highlighted with two red arrows in the enlarged subarray. All the positive controls spotted in this subarray are also labeled for clarification.