

## Product datasheet for **UM570058**

### **LAT2 (SLC7A8) Mouse Monoclonal Antibody [Clone ID: UMAB70]**

#### **Product data:**

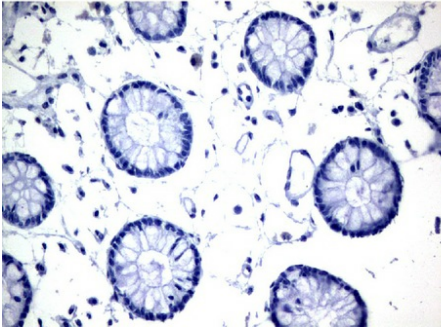
<b>Product Type:</b>	Primary Antibodies
<b>Clone Name:</b>	UMAB70
<b>Applications:</b>	10k-ChIP, IF, IHC, WB
<b>Recommended Dilution:</b>	IHC 1:100
<b>Reactivity:</b>	Human, Mouse, Rat
<b>Host:</b>	Mouse
<b>Isotype:</b>	IgG1
<b>Clonality:</b>	Monoclonal
<b>Immunogen:</b>	Full length human recombinant protein of human SLC7A8(NP_036376) produced in HEK293T cell.
<b>Formulation:</b>	PBS (pH 7.3) containing 1% BSA, 50% glycerol and 0.02% sodium azide.
<b>Concentration:</b>	0.5~1.0 mg/ml (Lot Dependent)
<b>Purification:</b>	Purified from mouse ascites fluids or tissue culture supernatant by affinity chromatography (protein A/G)
<b>Conjugation:</b>	Unconjugated
<b>Storage:</b>	Store at -20°C as received.
<b>Stability:</b>	Stable for 12 months from date of receipt.
<b>Predicted Protein Size:</b>	58.2 kDa
<b>Gene Name:</b>	solute carrier family 7 member 8
<b>Database Link:</b>	<a href="#">NP_036376</a> <a href="#">Entrez Gene 50934 Mouse</a> <a href="#">Entrez Gene 84551 Rat</a> <a href="#">Entrez Gene 23428 Human</a> <a href="#">Q9UHI5</a>
<b>Synonyms:</b>	LAT2; LPI-PC1
<b>Protein Families:</b>	Druggable Genome, Transmembrane



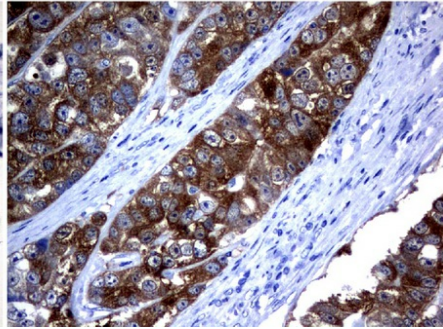
[View online »](#)

Product images:

Normal Colon



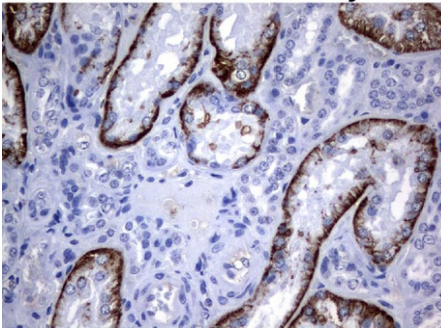
Colorectal Cancer



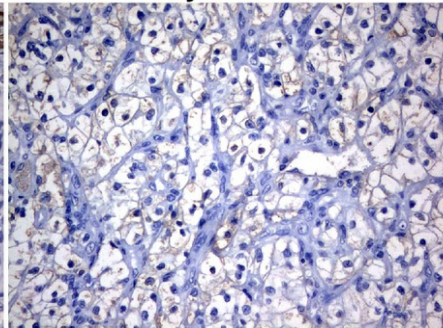
UM500058

Immunohistochemical staining of paraffin-embedded Human normal colon tissue and colorectal cancer tissue using anti-SLC7A8 mouse monoclonal antibody. ([UM500058]; heat-induced epitope retrieval by 10mM citric buffer, pH6.0, 120°C for 3min)

Normal Kidney



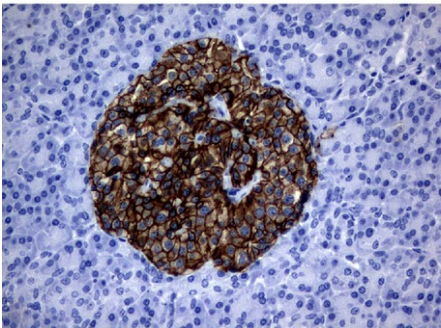
Kidney Carcinoma



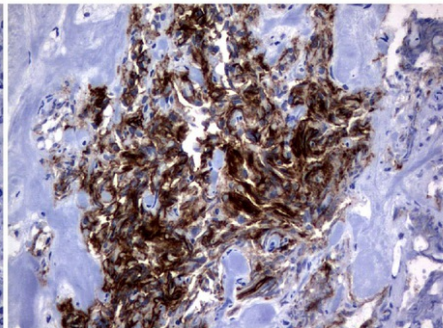
UM500058

Immunohistochemical staining of paraffin-embedded Human normal kidney tissue and kidney carcinoma tissue using anti-SLC7A8 mouse monoclonal antibody. ([UM500058]; heat-induced epitope retrieval by 10mM citric buffer, pH6.0, 120°C for 3min)

Normal Pancreas

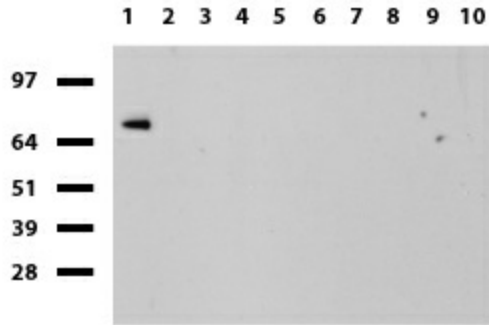


Pancreatic Cancer

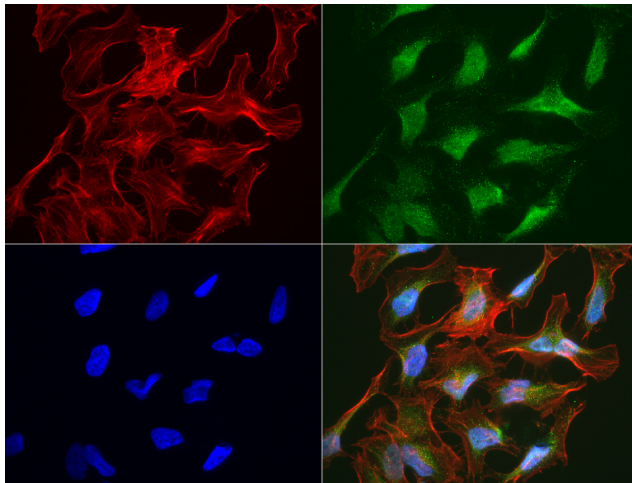


UM500058

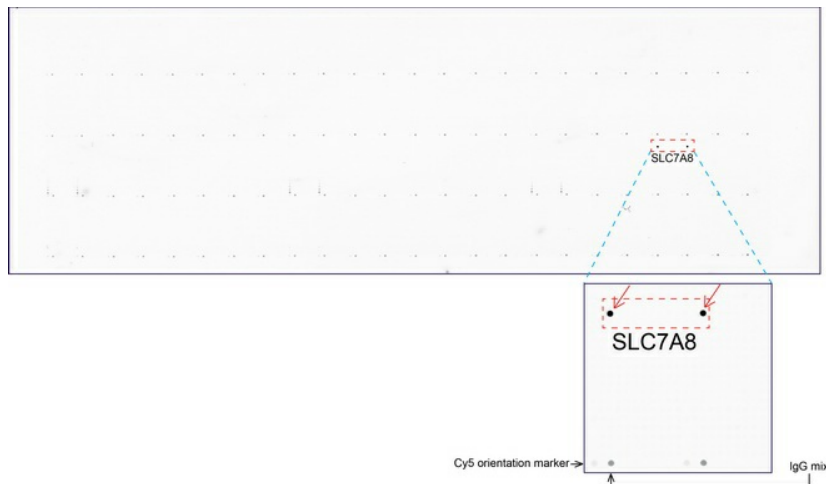
Immunohistochemical staining of paraffin-embedded Human normal pancreas tissue and pancreatic cancer tissue using anti-SLC7A8 mouse monoclonal antibody. ([UM500058]; heat-induced epitope retrieval by 10mM citric buffer, pH6.0, 120°C for 3min)



Western blot of human tissue lysates (15ug) from 10 different tissues (1: Testis, 2: Omentum, 3: Uterus, 4: Breast, 5: Brain, 6: Liver, 7: Ovary, 8: Thyroid 9: Colon, 10: Spleen). Dilution: 1:500.



Immunofluorescent staining of HeLa cells using anti-SLC7A8 mouse monoclonal antibody ([UM500058], green, 1:50). Actin filaments were labeled with Alexa Fluor® 594 Phalloidin (red), and nuclear with DAPI (blue).



OriGene overexpression protein microarray chip was immunostained with UltraMAB anti-SLC7A8 mouse monoclonal antibody ([UM500058]). The positive reactive proteins are highlighted with two red arrows in the enlarged subarray. All the positive controls spotted in this subarray are also labeled for clarification.