

## Product datasheet for **UM500112CF**

### CD44 Mouse Monoclonal Antibody [Clone ID: UMAB295]

#### Product data:

Product Type:	Primary Antibodies
Clone Name:	UMAB295
Applications:	IHC
Recommended Dilution:	IHC 1:500
Reactivity:	Human
Host:	Mouse
Isotype:	IgG1
Clonality:	Monoclonal
Immunogen:	Full length human recombinant protein of human CD44 v6(NP_000601) produced in HEK293T cell.
Formulation:	Lyophilized powder (original buffer 1X PBS, pH 7.3, 8% trehalose)
Reconstitution Method:	For reconstitution, we recommend adding 100uL distilled water to a final antibody concentration of about 1 mg/mL. To use this carrier-free antibody for conjugation experiment, we strongly recommend performing another round of desalting process. (OriGene recommends Zeba Spin Desalting Columns, 7KMWCO from Thermo Scientific)
Concentration:	1mg/ml
Purification:	Purified from mouse ascites fluids or tissue culture supernatant by affinity chromatography (protein A/G)
Conjugation:	Unconjugated
Predicted Protein Size:	81.54 kDa
Gene Name:	CD44 molecule (Indian blood group)
Database Link:	<a href="#">NP_000601</a> <a href="#">Entrez Gene 960 Human</a> <a href="#">P16070</a>



[View online »](#)

**Background:**

The protein encoded by this gene is a cell-surface glycoprotein involved in cell-cell interactions, cell adhesion and migration. It is a receptor for hyaluronic acid (HA) and can also interact with other ligands, such as osteopontin, collagens, and matrix metalloproteinases (MMPs). This protein participates in a wide variety of cellular functions including lymphocyte activation, recirculation and homing, hematopoiesis, and tumor metastasis. Transcripts for this gene undergo complex alternative splicing that results in many functionally distinct isoforms, however, the full length nature of some of these variants has not been determined. Alternative splicing is the basis for the structural and functional diversity of this protein, and may be related to tumor metastasis. [provided by RefSeq, Jul 2008].

**Synonyms:**

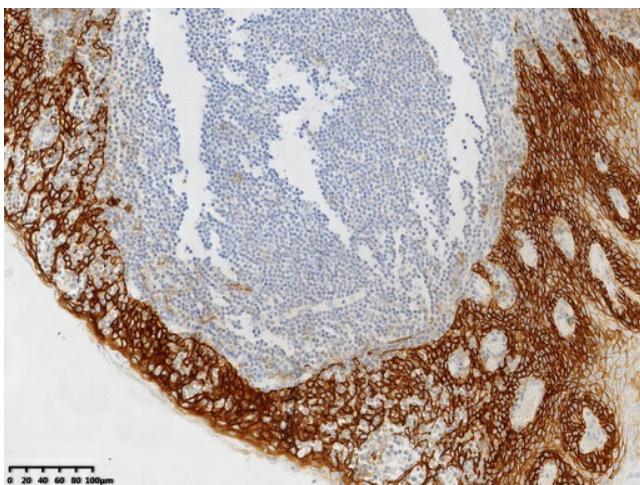
CDW44; CSPG8; ECMR-III; HCELL; HUTCH-I; IN; LHR; MC56; MDU2; MDU3; MIC4; Pgp1

**Protein Families:**

Adult stem cells, Cancer stem cells, Druggable Genome, Embryonic stem cells, ES Cell Differentiation/IPS, Stem cell relevant signaling - DSL/Notch pathway, Transmembrane

**Protein Pathways:**

ECM-receptor interaction, Hematopoietic cell lineage

**Product images:**

IHC staining of FFPE human tonsil tissue with in the normal limits using anti-CD44 v6 mouse monoclonal antibody ([UM500112]) and Polink-2 HRP polymer detection kit ([D22-110]). Heat-induced epitope retrieval by EDTA solution buffer pH 8.0 ([B04C-100]) at 120°C for 3 min. The brown stain indicates positive stain, blue is the counter stain.