

Product datasheet for **UM500106CF**

CD31 (PECAM1) Mouse Monoclonal Antibody [Clone ID: UMAB164]

Product data:

Product Type:	Primary Antibodies
Clone Name:	UMAB164
Applications:	10k-ChIP, FC, IHC, WB
Recommended Dilution:	IHC 1:100~200
Reactivity:	Human
Host:	Mouse
Isotype:	IgG1
Clonality:	Monoclonal
Immunogen:	Full length human recombinant protein of human PECAM1(NP_000433) produced in HEK293T cell.
Formulation:	Lyophilized powder (original buffer 1X PBS, pH 7.3, 8% trehalose)
Reconstitution Method:	For reconstitution, we recommend adding 100uL distilled water to a final antibody concentration of about 1 mg/mL. To use this carrier-free antibody for conjugation experiment, we strongly recommend performing another round of desalting process. (OriGene recommends Zeba Spin Desalting Columns, 7KMWCO from Thermo Scientific)
Purification:	Purified from mouse ascites fluids or tissue culture supernatant by affinity chromatography (protein A/G)
Conjugation:	Unconjugated
Storage:	Store at -20°C as received.
Stability:	Stable for 12 months from date of receipt.
Predicted Protein Size:	82.4 kDa
Gene Name:	platelet and endothelial cell adhesion molecule 1
Database Link:	NP_000433 Entrez Gene 5175 Human P16284



[View online »](#)

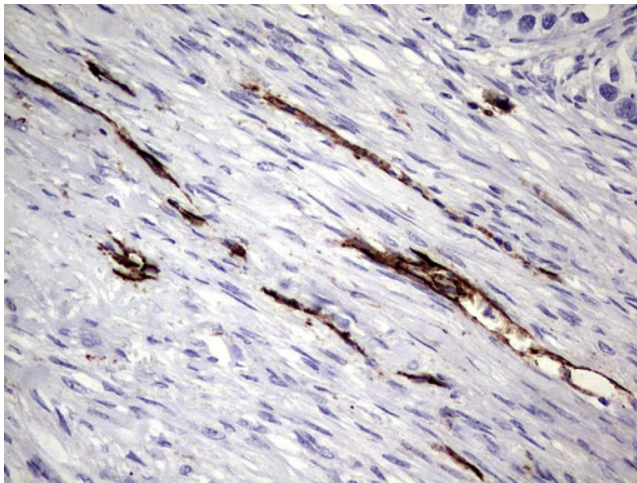
Background: The protein encoded by this gene is found on the surface of platelets, monocytes, neutrophils, and some types of T-cells, and makes up a large portion of endothelial cell intercellular junctions. The encoded protein is a member of the immunoglobulin superfamily and is likely involved in leukocyte migration, angiogenesis, and integrin activation. [provided by RefSeq, May

Synonyms: CD31; CD31/EndoCAM; endoCAM; GPIIA'; PECA1; PECAM-1

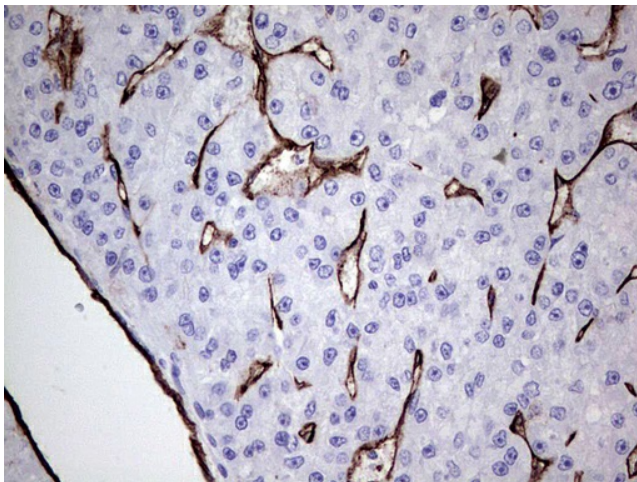
Protein Families: Druggable Genome, ES Cell Differentiation/IPS, Transmembrane

Protein Pathways: Cell adhesion molecules (CAMs), Leukocyte transendothelial migration

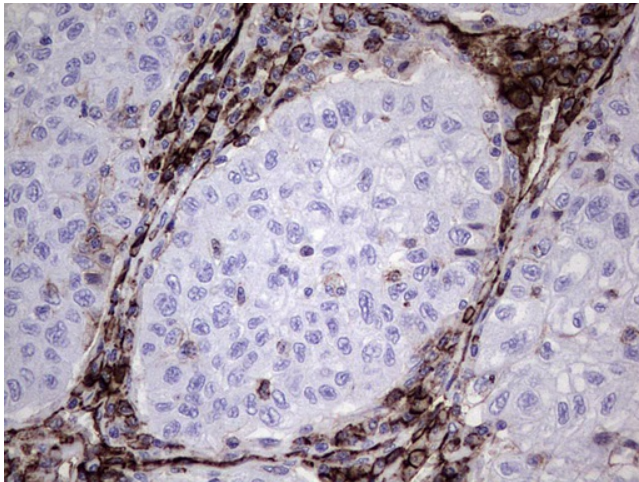
Product images:



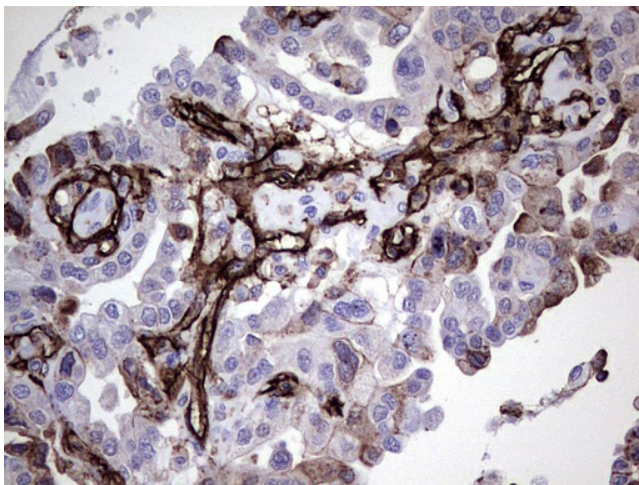
Immunohistochemical staining of paraffin-embedded Carcinoma of Human kidney tissue using anti-PECAM1 mouse monoclonal antibody. ([UM500106], heat-induced epitope retrieval by 1mM EDTA in 10mM Tris, pH8.0, 120°C for 3min)



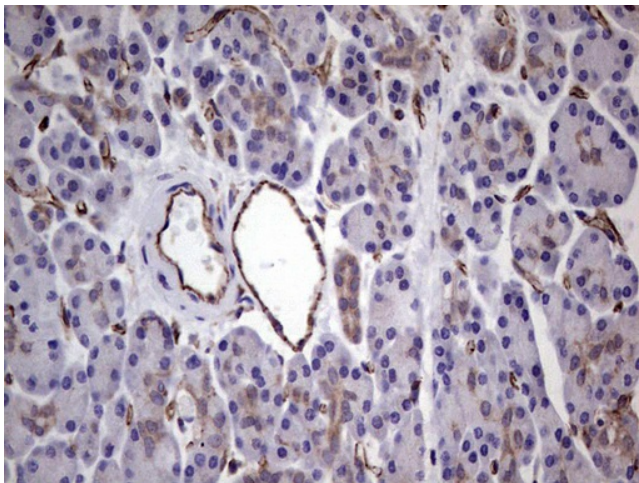
Immunohistochemical staining of paraffin-embedded Carcinoma of Human liver tissue using anti-PECAM1 mouse monoclonal antibody. ([UM500106], heat-induced epitope retrieval by 1mM EDTA in 10mM Tris, pH8.0, 120°C for 3min)



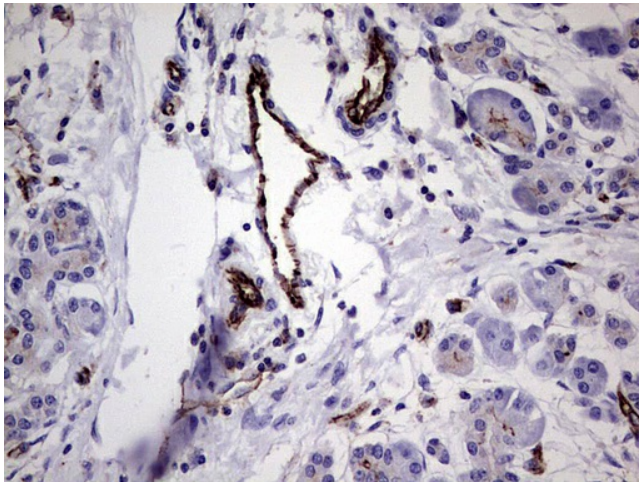
Immunohistochemical staining of paraffin-embedded Carcinoma of Human lung tissue using anti-PECAM1 mouse monoclonal antibody. ([UM500106], heat-induced epitope retrieval by 1mM EDTA in 10mM Tris, pH8.0, 120°C for 3min)



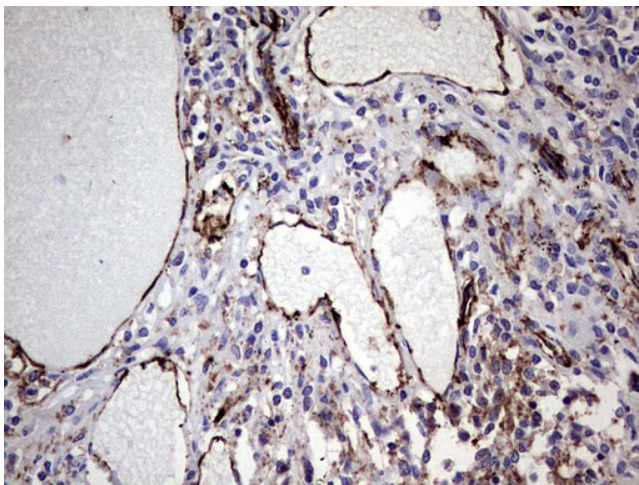
Immunohistochemical staining of paraffin-embedded Adenocarcinoma of Human ovary tissue using anti-PECAM1 mouse monoclonal antibody. ([UM500106], heat-induced epitope retrieval by 1mM EDTA in 10mM Tris, pH8.0, 120°C for 3min)



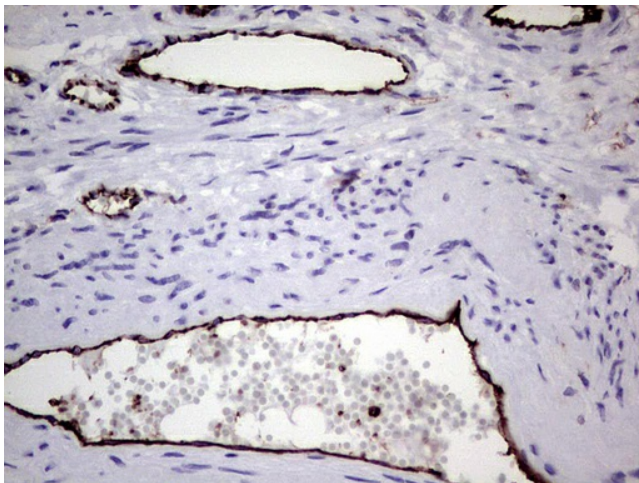
Immunohistochemical staining of paraffin-embedded Human pancreas tissue using anti-PECAM1 mouse monoclonal antibody. ([UM500106], heat-induced epitope retrieval by 1mM EDTA in 10mM Tris, pH8.0, 120°C for 3min)



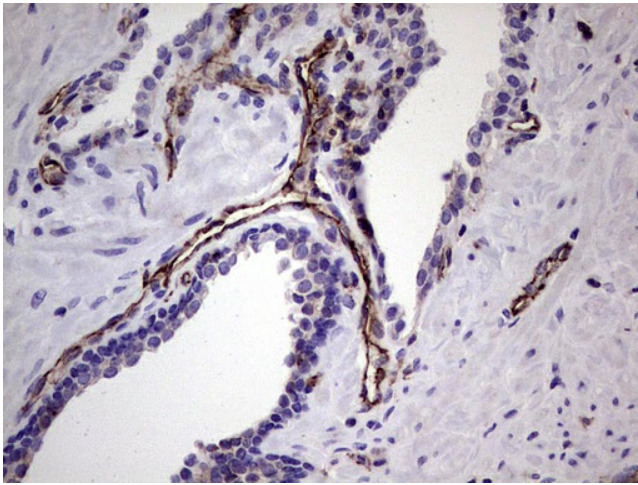
Immunohistochemical staining of paraffin-embedded Carcinoma of Human pancreas tissue using anti-PECAM1 mouse monoclonal antibody. ([UM500106], heat-induced epitope retrieval by 1mM EDTA in 10mM Tris, pH8.0, 120°C for 3min)



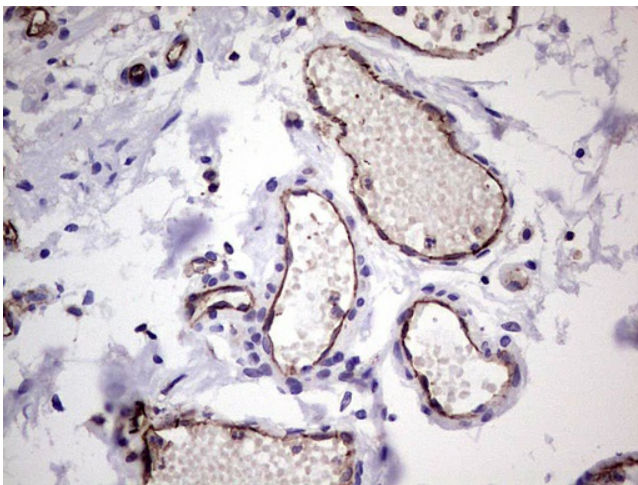
Immunohistochemical staining of paraffin-embedded Carcinoma of Human thyroid tissue using anti-PECAM1 mouse monoclonal antibody. ([UM500106], heat-induced epitope retrieval by 1mM EDTA in 10mM Tris, pH8.0, 120°C for 3min)



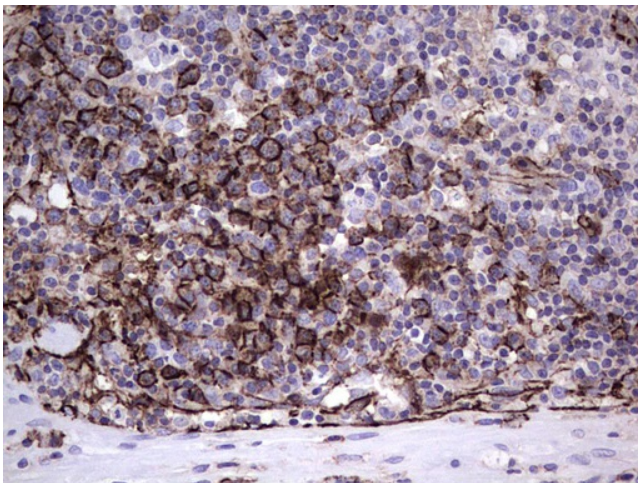
Immunohistochemical staining of paraffin-embedded Human endometrium tissue using anti-PECAM1 mouse monoclonal antibody. ([UM500106], heat-induced epitope retrieval by 1mM EDTA in 10mM Tris, pH8.0, 120°C for 3min)



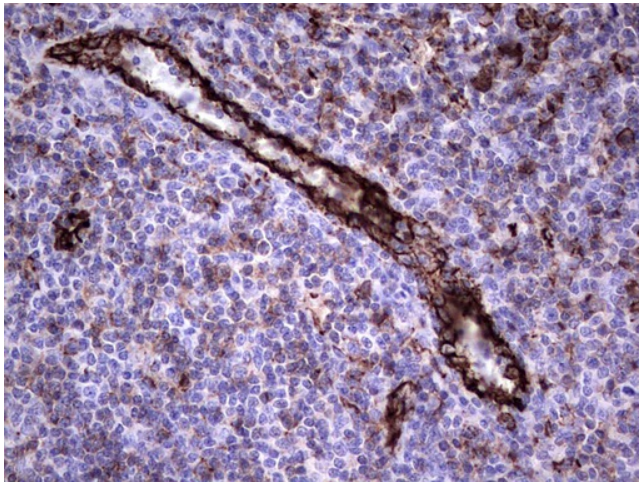
Immunohistochemical staining of paraffin-embedded Human prostate tissue using anti-PECAM1 mouse monoclonal antibody. ([UM500106], heat-induced epitope retrieval by 1mM EDTA in 10mM Tris, pH8.0, 120°C for 3min)



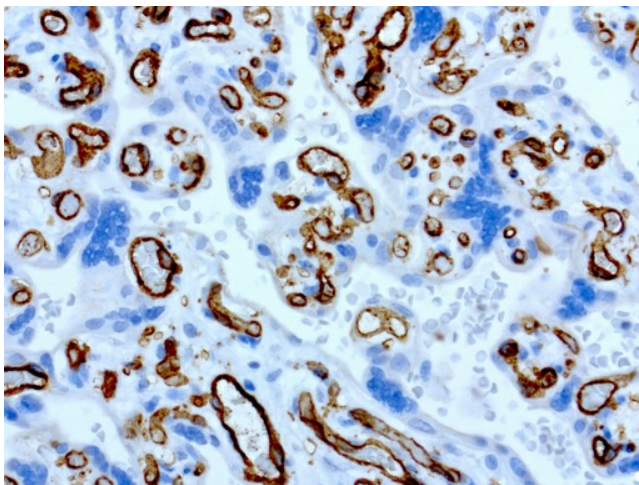
Immunohistochemical staining of paraffin-embedded Human bladder tissue using anti-PECAM1 mouse monoclonal antibody. ([UM500106], heat-induced epitope retrieval by 1mM EDTA in 10mM Tris, pH8.0, 120°C for 3min)



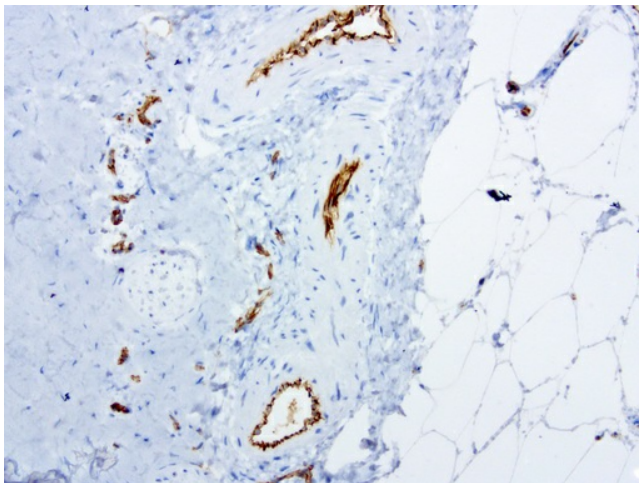
Immunohistochemical staining of paraffin-embedded Carcinoma of Human bladder tissue using anti-PECAM1 mouse monoclonal antibody. ([UM500106], heat-induced epitope retrieval by 1mM EDTA in 10mM Tris, pH8.0, 120°C for 3min)



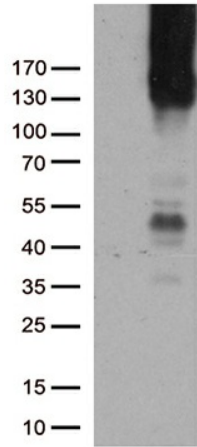
Immunohistochemical staining of paraffin-embedded Human tonsil using anti-PECAM1 mouse monoclonal antibody. ([UM500106], heat-induced epitope retrieval by 1mM EDTA in 10mM Tris, pH8.0, 120°C for 3min)



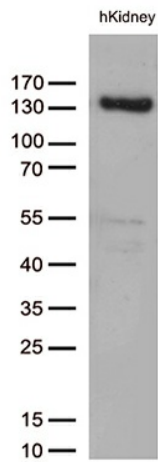
Immunohistochemical staining of paraffin-embedded human placenta using anti-PECAM clone UMAB164 mouse monoclonal antibody ([UM500106]) at 1:100 with Polink2 Broad HRP DAB detection kit; heat-induced epitope retrieval with GBI Citrate pH6.0 HIER buffer using pressure chamber for 3 minutes at 110C. Cytoplasmic and membrane staining is seen in the endothelia cells and weak staining in the trophoblast.



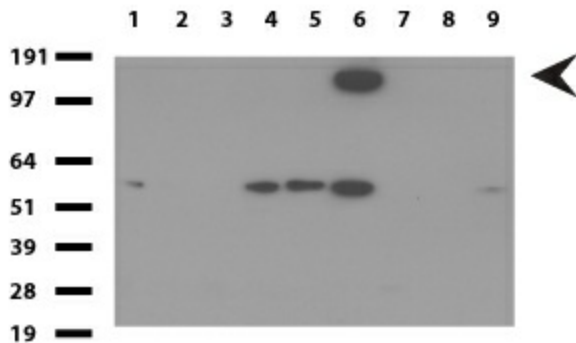
Immunohistochemical staining of paraffin-embedded human skin using anti-PECAM clone UMAB164 mouse monoclonal antibody ([UM500106]) at 1:100 with Polink2 Broad HRP DAB detection kit; heat-induced epitope retrieval with GBI Citrate pH6.0 HIER buffer using pressure chamber for 3 minutes at 110C. Cytoplasmic and membrane staining is seen in the vascular endothelia cells.



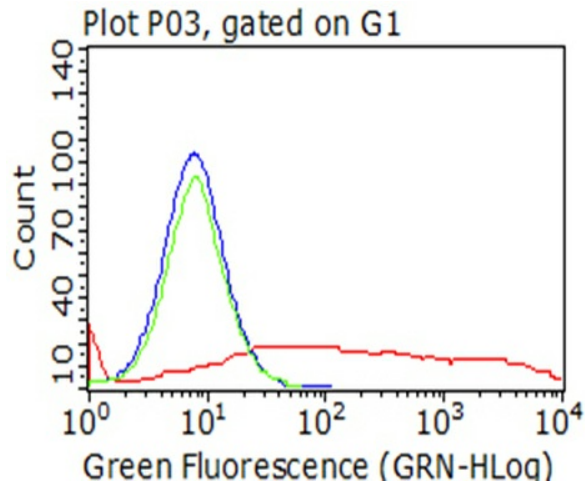
HEK293T cells were transfected with the pCMV6-ENTRY control (Left lane) or pCMV6-ENTRY PECAM1 ([RC208654], Right lane) cDNA for 48 hrs and lysed. Equivalent amounts of cell lysates (5 ug per lane) were separated by SDS-PAGE and immunoblotted with anti-PECAM1 mouse monoclonal antibody.1:500`



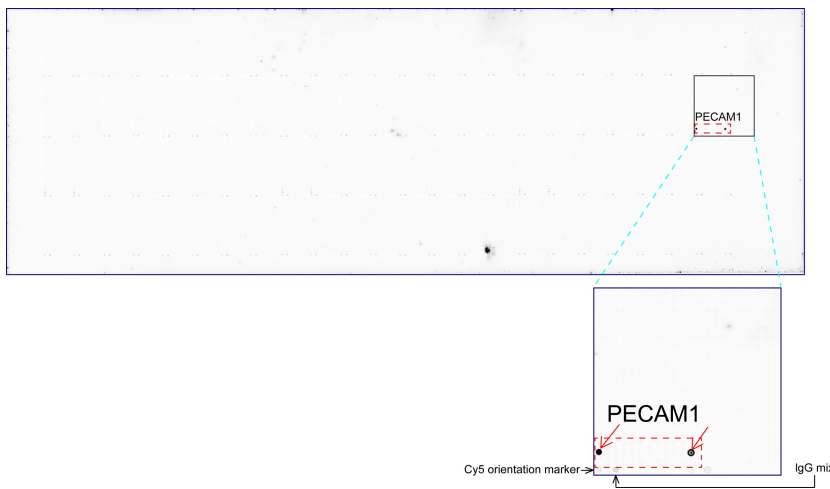
Western blot analysis of extracts (35ug) from human kidney tissue by using anti-PECAM1 monoclonal antibody. 1:500



Western blot of cell lysates (35ug) from 9 different cell lines (1: HepG2, 2: HeLa, 3: SV-T2, 4: A549, 5: COS7, 6: Jurkat, 7: MDCK, 8: PC-12, 9: MCF7). Dilution: 1:500.



Living HEK293T cells transfected with either [RC208654] plasmid (red) or empty vector (blue) were immunostained by anti-PECAM1 antibody ([UM500106]) or isotype control antibody (green), and then analyzed by flow cytometry (1:100).



OriGene overexpression protein microarray chip was immunostained with UltraMAB anti-PECAM1 mouse monoclonal antibody ([UM500106]). The positive reactive proteins are highlighted with two red arrows in the enlarged subarray. All the positive controls spotted in this subarray are also labeled for clarification.