

## Product datasheet for **UM500105CF**

### **MADCAM1 Mouse Monoclonal Antibody [Clone ID: UMAB158]**

#### **Product data:**

<b>Product Type:</b>	Primary Antibodies
<b>Clone Name:</b>	UMAB158
<b>Applications:</b>	IHC
<b>Recommended Dilution:</b>	WB 1:2000, IHC 1:200
<b>Reactivity:</b>	Human
<b>Host:</b>	Mouse
<b>Isotype:</b>	IgG1
<b>Clonality:</b>	Monoclonal
<b>Immunogen:</b>	Full length human recombinant protein of human MADCAM1(NP_570116) produced in HEK293T cell.
<b>Formulation:</b>	Lyophilized powder (original buffer 1X PBS, pH 7.3, 8% trehalose)
<b>Reconstitution Method:</b>	For reconstitution, we recommend adding 100uL distilled water to a final antibody concentration of about 1 mg/mL. To use this carrier-free antibody for conjugation experiment, we strongly recommend performing another round of desalting process. (OriGene recommends Zeba Spin Desalting Columns, 7KMWCO from Thermo Scientific)
<b>Purification:</b>	Purified from mouse ascites fluids or tissue culture supernatant by affinity chromatography (protein A/G)
<b>Conjugation:</b>	Unconjugated
<b>Storage:</b>	Store at -20°C as received.
<b>Stability:</b>	Stable for 12 months from date of receipt.
<b>Gene Name:</b>	mucosal vascular addressin cell adhesion molecule 1
<b>Database Link:</b>	<a href="#">NP_570116</a> <a href="#">Entrez Gene 8174 Human</a> <a href="#">Q13477</a>



[View online »](#)

**Background:**

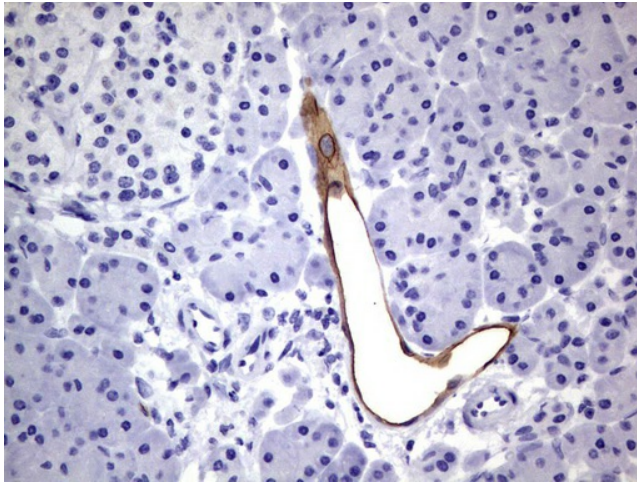
The protein encoded by this gene is an endothelial cell adhesion molecule that interacts preferentially with the leukocyte beta7 integrin LPAM-1 (alpha4beta7), L-selectin, and VLA-4 (alpha4beta1) on myeloid cells to direct leukocytes into mucosal and inflamed tissues. It is a member of the immunoglobulin family and is similar to ICAM1 and VCAM1. At least seven alternatively spliced transcripts encoding different protein isoforms have been found for this gene, but the full-length nature of some variants has not been determined. [provided by RefSeq, Jul 2008]

**Synonyms:**

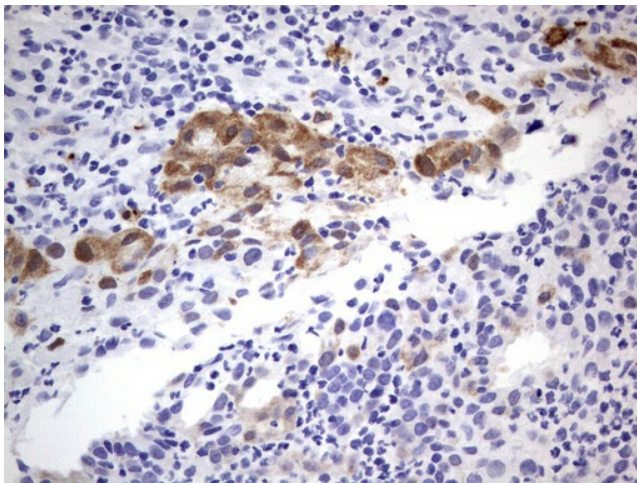
MACAM1

**Protein Pathways:**

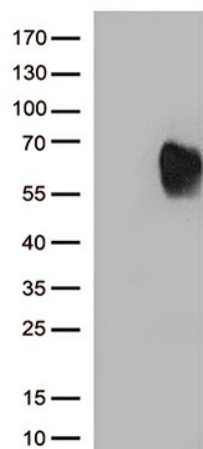
Cell adhesion molecules (CAMs)

**Product images:**

Immunohistochemical staining of paraffin-embedded Human pancreas tissue using anti-MADCAM1 mouse monoclonal antibody. ([UM500105], heat-induced epitope retrieval by 1mM EDTA in 10mM Tris, pH8.0, 120°C for 3min)



Immunohistochemical staining of paraffin-embedded Human lymph node tissue using anti-MADCAM1 mouse monoclonal antibody. ([UM500105], heat-induced epitope retrieval by 1mM EDTA in 10mM Tris, pH8.0, 120°C for 3min)



HEK293T cells were transfected with the pCMV6-ENTRY control (Cat# [PS100001], Left lane) or pCMV6-ENTRY MADCAM1 (Cat# [RC219060], Right lane) cDNA for 48 hrs and lysed. Equivalent amounts of cell lysates (5 ug per lane) were separated by SDS-PAGE and immunoblotted with anti-MADCAM1 (Cat# [UM500105])(1:2000).